

**TOPSELLER -**  
many more available!

Live Tools

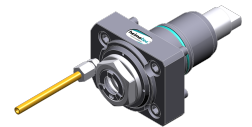
heimatec®

# Nakamura

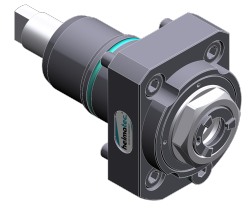
## SC-100 X2-oberer Revolver

Part-#	Tool adaption	Rotation max [1/min]	Gear ratio	Coolant	Pressure max.	Center distance
<b>Axial drilling and milling head</b>						
8 010 44 091	<b>ER 20 A - u-tec</b>	12.000	1:1	EXT	--	--
8 010 44 092	<b>ER 20 A - u-tec</b>	12.000	1:1	IC/Ext	25 bar	--
8 010 44 093	<b>ER 20 A - u-tec</b>	12.000	1:1	IC/Ext	100 bar	--
8 010 45 208	<b>ER 25 A - u-tec</b>	12.000	1:1	EXT	--	--
8 010 45 209	<b>ER 25 A - u-tec</b>	12.000	1:1	IC/Ext	25 bar	--
8 010 45 210	<b>ER 25 A - u-tec</b>	15.000	1:1	IC/Ext	100 bar	--
<b>Radial drilling and milling head</b>						
8 030 44 225	<b>ER 20 A - u-tec</b>	12.000	1:1	EXT	--	<b>60 mm</b>
8 030 44 226	<b>ER 20 A - u-tec</b>	12.000	1:1	IC/Ext	140 bar	<b>60 mm</b>
8 030 44 229	<b>ER 20 A - u-tec</b>	12.000	1:1	EXT	--	<b>75 mm</b>
8 030 44 230	<b>ER 20 A - u-tec</b>	12.000	1:1	IC/Ext	140 bar	<b>75 mm</b>
8 030 45 574	<b>ER 25 A - u-tec</b>	12.000	1:1	EXT	--	<b>60 mm</b>
8 030 45 575	<b>ER 25 A - u-tec</b>	12.000	1:1	IC/Ext	140 bar	<b>60 mm</b>
8 030 45 583	<b>ER 25 A - u-tec</b>	12.000	1:1	EXT	--	<b>75 mm</b>
<b>Radial drilling and milling head, double spindle</b>						
8 039 44 094	<b>ER 20 A - u-tec</b>	12.000	1:1	EXT	--	<b>60 mm</b>
8 039 45 009	<b>ER 25 A - u-tec</b>	12.000	1:1	EXT	--	<b>60 mm</b>
<b>Universal head</b>						
8 040 44 110	<b>ER 16 A - u-tec</b>	12.000	1:1	EXT	--	<b>58 mm</b>
8 040 44 111	<b>ER 16 A - u-tec</b>	12.000	1:1	IC/Ext	140 bar	<b>58 mm</b>
<b>Universal head, offset</b>						
8 043 44 001	<b>ER 16</b>	6.000	1:1	EXT	--	<b>25 mm</b>
8 043 44 051	<b>ER 16 A - u-tec</b>	12.000	1:1	EXT	--	<b>25 mm</b>
8 043 44 052	<b>ER 16 A - u-tec</b>	12.000	1:1	IC/Ext	140 bar	<b>25 mm</b>

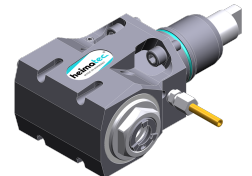
Illustrations similar.



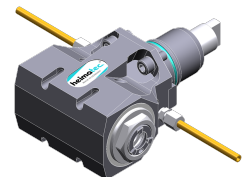
8 010 44 091



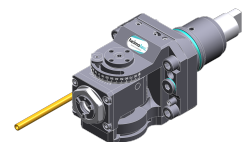
8 010 44 092



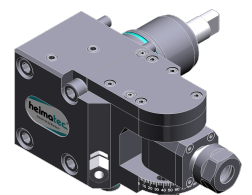
8 030 44 225



8 039 44 094



8 040 44 110



8 043 44 001

**TOPSELLER -**  
many more available!

Static Tools

**heimatec**®

# Nakamura

## SC-100 X2-oberer Revolver

Part-#	Tool adaption	Coolant	Pressure max.	Center distance
<b>Cut-off holder</b>				
8 224 12 009	<b>Clampshaft SH 26</b>	EXT	--	--
8 224 13 006	<b>Clampshaft SH 32</b>	EXT	--	--
8 224 11 013	<b>Sq. 20</b>	EXT	--	--
<b>Universal turning holder</b>				
8 224 14 007	<b>Sq. 20</b>	EXT	--	--
8 224 14 024	<b>Sq. 20</b>	IC/Ext	100 bar	--
<b>Boring bar holder</b>				
8 240 16 007	<b>Ø 20</b>	IC/Ext	--	<b>75 mm</b>
8 240 17 020	<b>Ø 25</b>	IC/Ext	--	<b>75 mm</b>
8 240 17 086	<b>Ø 25</b>	IC/Ext	--	<b>75 mm</b>
8 240 18 025	<b>Ø 32</b>	IC/Ext	--	<b>75 mm</b>
8 240 18 076	<b>Ø 32</b>	IC/Ext	--	<b>75 mm</b>
<b>Facing holder</b>				
8 244 11 003	<b>Sq. 20</b>	EXT	--	--
<b>Double turning holder</b>				
8 251 11 004	<b>Sq. 20</b>	EXT	--	--
8 251 14 069	<b>Sq. 20</b>	EXT	--	--
8 251 14 099	<b>Sq. 20</b>	IC/Ext	100 bar	--
<b>Combi multiple holder</b>				
8 251 14 013	<b>Sq. 20</b>	EXT	80 bar	--
8 251 14 080	<b>Sq. 20</b>	IC/Ext	100 bar	--
<b>Multiple boring bar holder</b>				
8 253 17 103	<b>Ø 25</b>	IC/Ext	--	<b>75 mm</b>

Illustrations similar.



8 224 12 009



8 224 14 007



8 240 16 007



8 244 11 003

**TOPSELLER -**  
many more available!

Static Tools

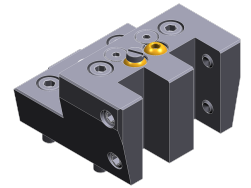
**heimatec**®

# Nakamura

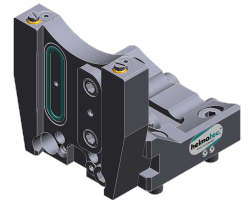
## SC-100 X2-oberer Revolver

Part-#	Tool adaption	Coolant	Pressure max.	Center distance
<b>Double boring bar holder</b>				
8 253 17 111	<b>Ø 25</b>	IC/Ext	--	--
<b>Multiple turning holder</b>				
8 259 11 002	<b>Sq. 20</b>	EXT	--	--
<b>Multiple holder</b>				
8 259 17 010	<b>Sq. 20</b>	IC/Ext	--	<b>60 mm</b>
<b>Cut-off holder, height adjustable</b>				
8 320 13 003	<b>Clampshaft SH 32</b>	IC/Ext	70 bar	--

*Illustrations similar.*



8 259 11 002



8 320 13 003