

**TOPSELLER -**  
many more available!

Live Tools

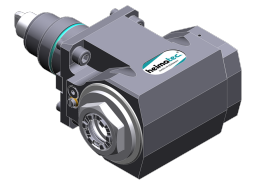
**heimatec**®

HAAS

## ST-15/Y - BMT 45

Part-#	Tool adaption	Rotation max [1/min]	Gear ratio	Coolant	Pressure max.	Center distance
<b>Radial drilling and milling head</b>						
8 030 45 595	<b>ER 25 A - u-tec</b>	12.000	1:1	IC/Ext	140 bar	<b>65 mm</b>
<b>Universal head, offset</b>						
8 043 45 011	<b>ER 25 A - u-tec</b>	6.000	1:1	EXT	--	<b>69 mm</b>

*Illustrations similar.*



8 030 45 595

**TOPSELLER -**  
many more available!

Static Tools

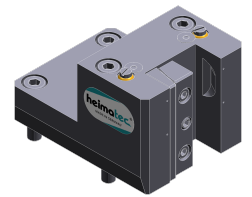
**heimatec**®

# HAAS

## ST-15/Y - BMT 45

Part-#	Tool adaption	Coolant	Pressure max.	Center distance
<b>Universal turning holder</b>				
8 224 04 003	<b>Sq. 20</b>	EXT	80 bar	--
8 224 04 060	<b>Sq. 20</b>	IC/Ext	100 bar	--
8 224 05 011	<b>Sq. 25</b>	EXT	--	--
8 224 05 030	<b>Sq. 25</b>	IC/Ext	100 bar	--
<b>Boring bar holder</b>				
8 240 07 039	<b>Ø 25</b>	IC/Ext	--	<b>65 mm</b>
8 240 08 003	<b>Ø 32</b>	IC/Ext	80 bar	<b>65 mm</b>
8 240 09 014	<b>Ø 40</b>	IC/Ext	80 bar	<b>65 mm</b>
<b>Combi facing holder</b>				
8 244 04 029	<b>Sq. 20</b>	IC/Ext	100 bar	--
<b>Multiple turning holder</b>				
8 259 01 015	<b>Sq. 20</b>	EXT	--	--
<b>Cut-off holder, height adjustable</b>				
8 320 02 012	<b>Clampshaft SH 26</b>	IC/Ext	70 bar	--
8 320 03 011	<b>Clampshaft SH 32</b>	IC/Ext	70 bar	--

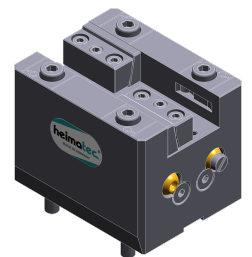
Illustrations similar.



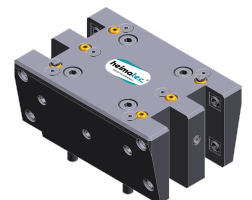
8 224 04 060



8 240 07 039



8 244 04 029



8 259 01 015