

**TOPSELLER -**  
many more available!

Live Tools

**heimatec**®

# HAAS ST-15/Y - VDI

Part-#	Tool adaption	Rotation max [1/min]	Gear ratio	Coolant	Pressure max.	Center distance
<b>Axial drilling and milling head</b>						
8 010 46 188	<b>ER 32 A - u-tec</b>	6.000	1:1	EXT	--	--
8 010 46 215	<b>ER 32 A - u-tec</b>	6.000	1:1	IC/Ext	100 bar	--
<b>Radial drilling and milling head</b>						
8 030 46 321	<b>ER 32 A - u-tec</b>	6.000	1:1	EXT	--	<b>69 mm</b>
8 030 46 330	<b>ER 32 A - u-tec</b>	6.000	1:1	IC/Ext	140 bar	<b>69 mm</b>
<b>Universal head</b>						
8 040 45 040	<b>ER 25 A - u-tec</b>	6.000	1:1	EXT	--	<b>87 mm</b>

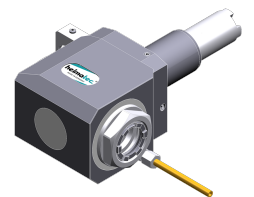
*Illustrations similar.*



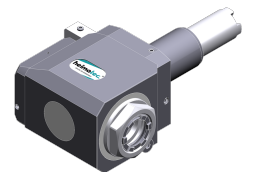
8 010 46 188



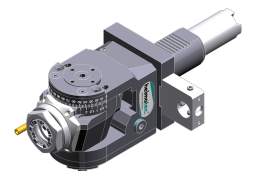
8 010 46 215



8 030 46 321



8 030 46 330



8 040 45 040

**TOPSELLER -**  
many more available!

Static Tools

**heimatec**®

# HAAS

## ST-15/Y - VDI

Part-#	Tool adaption	Coolant	Pressure max.
<b>Tool holder</b>			
8 210 45 002	<b>ER 25</b>	IC	--
8 210 46 000	<b>ER 32</b>	IC	--
8 210 47 001	<b>Ø 25</b>	IC/Ext	--
8 210 49 005	<b>Ø 50</b>	IC/Ext	--
<b>Boring bar holder</b>			
8 219 47 004	<b>Ø 25</b>	IC/Ext	--
8 219 48 006	<b>Ø 32</b>	IC/Ext	--
<b>Cut-off holder, height adjustable</b>			
8 320 43 009	<b>Clampshaft SH 32</b>	IC/Ext	70 bar

*Illustrations similar.*



8 210 45 002



8 210 46 000



8 219 47 004



8 219 48 006



8 320 43 009