

SPINNER  
**TC 77-SMC**



# High-tech from heimatec - heimatec - Tools and systems for productive turning and milling

heimatec belongs to the international technology and quality leaders for precision tools and specializes in the development and production of high-precision static and live tools for all CNC lathes, CNC turn-/mill machines and CNC machining centers.

The range of products\* spans from static BMT and VDI tool holders, live tools up to highly complex customer-specific individual solutions. heimatec, headquartered in Renchen, has a own subsidiary in Asia and India and numerous representatives as well as trading partners all over the world.

## \*OUR PRODCUTS

Static tool holders

Live tool units

Precision tools

Tools for turning and machining centres

Tools for swiss type lathes

Tool changing and uick-change systems

Tool systems for gear production

Digital tool management

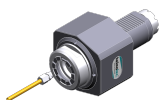
This catalogue, including all its parts, is protected by copyright. Any use outside the restricted limitations of the Copyright Act without the consent of heimatec is inadmissible and liable to prosecution. This applies in particular to duplication, translation, microfilming and storage and processing in electronic systems.

**heimatec GmbH** reserves the right to make technical changes at any time without giving prior notice. This applies in particular to adjustments at any time to meet new or changed international standards, or in case of further developments of our products or manufacturing processes.

The current version of our General Terms and Conditions can be found on our website.

# SPINNER TC 77-SMC

Part-#	Name	
<b>8 010 56 033</b>	<b>Axial drilling and milling head ER 32 IC</b>	
	Weight [kg]:	5.470
	Tool drive:	Coupling
	Shank size [mm]:	50.00
	Shank type:	VDI
	Tool adaption:	ER 32
	Gear ratio [i]:	1:1
	Torque max [Nm]:	80
	Rotation max [1/min]:	4000
	Rotating direction:	same
	Coolant:	IC/Ext
	Pressure max [bar]:	25
<b>8 010 57 015</b>	<b>Axial drilling and milling head ER 40</b>	
	Weight [kg]:	5.390
	Tool drive:	Coupling
	Shank size [mm]:	50.00
	Shank type:	VDI
	Tool adaption:	ER 40
	Gear ratio [i]:	1:1
	Torque max [Nm]:	80
	Rotation max [1/min]:	4000
	Rotating direction:	same
	Coolant:	EXT
<b>8 010 57 036</b>	<b>Axial drilling and milling head ER 40 IC</b>	
	Weight [kg]:	5.590
	Tool drive:	Coupling
	Shank size [mm]:	50.00
	Shank type:	VDI
	Tool adaption:	ER 40
	Gear ratio [i]:	1:1
	Torque max [Nm]:	80
	Rotation max [1/min]:	4000
	Rotating direction:	same
	Coolant:	IC/Ext
	Pressure max [bar]:	25
<b>8 010 57 083</b>	<b>Axial drilling and milling head ER 40 AX UT</b>	
	Weight [kg]:	5.120
	Tool drive:	Coupling
	Shank size [mm]:	50.00
	Shank type:	VDI
	Tool adaption:	ER 40 A - u-tec
	Gear ratio [i]:	1:1
	Torque max [Nm]:	80
	Rotation max [1/min]:	4000
	Rotating direction:	same
	Coolant:	EXT
<b>8 010 57 084</b>	<b>Axial drilling and milling head ER 40 AX UT IC</b>	
	Weight [kg]:	5.280
	Tool drive:	Coupling
	Shank size [mm]:	50.00
	Shank type:	VDI
	Tool adaption:	ER 40 u-tec
	Gear ratio [i]:	1:1



Part-#	Name	
	Torque max [Nm]:	80
	Rotation max [1/min]:	4000
	Rotating direction:	same
	Coolant:	IC/Ext
	Pressure max [bar]:	25
<b>8 010 58 010</b>	<b>Axial drilling and milling head HT 6</b>	
	Weight [kg]:	5.360
	Tool drive:	Coupling
	Shank size [mm]:	50.00
	Tool adaption:	HT 6
	Gear ratio [i]:	1:1
	Torque max [Nm]:	80
	Rotation max [1/min]:	4000
	Rotating direction:	same
	Coolant:	EXT
<b>8 010 58 011</b>	<b>Axial drilling and milling head HT 6 IC</b>	
	Weight [kg]:	5.570
	Tool drive:	Coupling
	Shank size [mm]:	50.00
	Shank type:	VDI
	Tool adaption:	HT 6
	Gear ratio [i]:	1:1
	Torque max [Nm]:	80
	Rotation max [1/min]:	4000
	Rotating direction:	same
	Coolant:	IC/Ext
	Pressure max [bar]:	25
<b>8 011 55 011</b>	<b>Axial milling head universal arbor 22</b>	
	Weight [kg]:	5.350
	Tool drive:	Coupling
	Shank size [mm]:	50.00
	Shank type:	VDI
	Tool adaption:	Universal arbor 22
	Gear ratio [i]:	1:1
	Torque max [Nm]:	80
	Rotation max [1/min]:	4000
	Rotating direction:	same
	Coolant:	EXT
<b>8 011 56 006</b>	<b>Axial milling head universal arbor 27</b>	
	Weight [kg]:	7.120
	Tool drive:	Coupling
	Shank size [mm]:	50.00
	Shank type:	VDI
	Tool adaption:	Universal arbor 27
	Gear ratio [i]:	1:1
	Torque max [Nm]:	80
	Rotation max [1/min]:	3000
	Rotating direction:	same
	Coolant:	EXT
	Please note:	Taper roller bearings

Part-#	Name	
<b>8 013 54 021</b>	<b>Axial drilling and milling head ER 16 AX UT</b>	
	Weight [kg]:	3.520
	Tool drive:	Coupling
	Shank size [mm]:	50.00
	Shank type:	VDI
	Tool adaption:	ER 16 A - u-tec
	Gear ratio [i]:	1:4
	Torque max [Nm]:	5
	Rotation max [1/min]:	24000
	Rotating direction:	same
	Coolant:	EXT
	Please note:	round housing ø 98
<b>8 019 55 061</b>	<b>Axial milling head universal arbor 22</b>	
	Weight [kg]:	8.580
	Notation:	offset
	Version:	left
	Tool drive:	Coupling
	Shank size [mm]:	50.00
	Shank type:	VDI
	Tool adaption:	Universal arbor 22
	Gear ratio [i]:	2:1
	Torque max [Nm]:	80
	Rotation max [1/min]:	3000
	Rotating direction:	opposite
	Coolant:	EXT
	Please note:	stronger bearing
<b>8 019 56 019</b>	<b>Axial drilling and milling head ER 32</b>	
	Notation:	offset
	Version:	left
	Tool drive:	Coupling
	Shank size [mm]:	50.00
	Shank type:	VDI
	Tool adaption:	ER 32
	Gear ratio [i]:	1:2
	Torque max [Nm]:	40
	Rotation max [1/min]:	10000
	Rotating direction:	opposite
	Coolant:	EXT
	Offset [mm]:	50
<b>8 019 56 027</b>	<b>Axial drilling and milling head ER 32 AX UT</b>	
	Weight [kg]:	8.200
	Notation:	offset
	Version:	left
	Tool drive:	Coupling
	Shank size [mm]:	50.00
	Shank type:	VDI
	Tool adaption:	ER 32 A - u-tec
	Gear ratio [i]:	1:2
	Torque max [Nm]:	40
	Rotation max [1/min]:	10000
	Rotating direction:	opposite
	Coolant:	EXT
	Offset [mm]:	50

Part-#	Name	
<b>8 030 56 160</b>	<b>Radial drilling and milling head ER 32 AX UT</b>	
	Weight [kg]:	8.840
	Employment for:	Main spindle
	Version:	left
	Tool drive:	Coupling
	Shank size [mm]:	50.00
	Shank type:	VDI
	Tool adaption:	ER 32 A - u-tec
	Gear ratio [i]:	1:1
	Torque max [Nm]:	50
	Rotation max [1/min]:	6000
	Rotating direction:	opposite
	Coolant:	EXT
	Center distance [mm]:	105
<b>8 030 57 036</b>	<b>Radial drilling and milling head ER 40</b>	
	Weight [kg]:	9.060
	Employment for:	Main spindle
	Version:	left
	Tool drive:	Coupling
	Shank size [mm]:	50.00
	Shank type:	VDI
	Tool adaption:	ER 40
	Gear ratio [i]:	1:1
	Torque max [Nm]:	50
	Rotation max [1/min]:	6000
	Rotating direction:	opposite
	Coolant:	EXT
	Center distance [mm]:	105
<b>8 030 57 037</b>	<b>Radial drilling and milling head ER 40 IC</b>	
	Weight [kg]:	9.530
	Employment for:	Main spindle
	Version:	left
	Tool drive:	Coupling
	Shank size [mm]:	50.00
	Shank type:	VDI
	Tool adaption:	ER 40
	Gear ratio [i]:	1:1
	Torque max [Nm]:	50
	Rotation max [1/min]:	6000
	Rotating direction:	opposite
	Coolant:	IC/Ext
	Pressure max [bar]:	140
	Center distance [mm]:	105
<b>8 030 57 038</b>	<b>Radial drilling and milling head ER 40</b>	
	Weight [kg]:	10.020
	Employment for:	Sub spindle
	Version:	right
	Tool drive:	Coupling
	Shank size [mm]:	50.00
	Shank type:	VDI
	Tool adaption:	ER 40
	Gear ratio [i]:	1:1
	Torque max [Nm]:	50
	Rotation max [1/min]:	6000
	Rotating direction:	opposite

Part-#	Name	
	Coolant:	EXT
	Center distance [mm]:	140
<b>8 030 57 121</b>	<b>Radial drilling and milling head ER 40 AX UT</b>	
	Weight [kg]:	9.830
	Employment for:	Main spindle
	Version:	left
	Tool drive:	Coupling
	Shank size [mm]:	50.00
	Shank type:	VDI
	Tool adaption:	ER 40 u-tec
	Gear ratio [i]:	1:1
	Torque max [Nm]:	50
	Rotation max [1/min]:	6000
	Rotating direction:	opposite
	Coolant:	EXT
	Center distance [mm]:	105
<b>8 030 57 122</b>	<b>Radial drilling and milling head ER 40 AX UT IC</b>	
	Employment for:	Main spindle
	Version:	left
	Tool drive:	Coupling
	Shank size [mm]:	50.00
	Shank type:	VDI
	Tool adaption:	ER 40 u-tec
	Gear ratio [i]:	1:1
	Torque max [Nm]:	50
	Rotation max [1/min]:	6000
	Rotating direction:	opposite
	Coolant:	IC/Ext
	Pressure max [bar]:	140
	Center distance [mm]:	105
<b>8 030 58 005</b>	<b>Radial drilling and milling head HT 6</b>	
	Weight [kg]:	9.700
	Employment for:	Main spindle
	Version:	left
	Tool drive:	Coupling
	Shank size [mm]:	50.00
	Shank type:	VDI
	Tool adaption:	HT 6
	Gear ratio [i]:	1:1
	Torque max [Nm]:	50
	Rotation max [1/min]:	5000
	Rotating direction:	opposite
	Coolant:	EXT
	Please note:	stronger bearing
	Center distance [mm]:	105
<b>8 030 58 006</b>	<b>Radial drilling and milling head HT 6 IC</b>	
	Weight [kg]:	10.460
	Employment for:	Main spindle
	Version:	left
	Tool drive:	Coupling
	Shank size [mm]:	50.00
	Shank type:	VDI
	Tool adaption:	HT 6
	Gear ratio [i]:	1:1

# SPINNER


## TC 77-SMC

Part-#	Name	
	Torque max [Nm]:	50
	Rotation max [1/min]:	5000
	Rotating direction:	opposite
	Coolant:	IC/Ext
	Pressure max [bar]:	140
	Please note:	stronger bearing
	Center distance [mm]:	105
<b>8 030 58 007</b>	<b>Radial drilling and milling head HT 6</b>	
	Employment for:	Sub spindle
	Version:	right
	Tool drive:	Coupling
	Shank size [mm]:	50.00
	Shank type:	VDI
	Tool adaption:	HT 6
	Gear ratio [i]:	1:1
	Torque max [Nm]:	50
	Rotation max [1/min]:	5000
	Rotating direction:	opposite
	Coolant:	EXT
	Please note:	stronger bearing
	Center distance [mm]:	140
<b>8 030 58 008</b>	<b>Radial drilling and milling head HT 6 IC</b>	
	Employment for:	Sub spindle
	Version:	right
	Tool drive:	Coupling
	Shank size [mm]:	50.00
	Shank type:	VDI
	Tool adaption:	HT 6
	Gear ratio [i]:	1:1
	Torque max [Nm]:	50
	Rotation max [1/min]:	5000
	Rotating direction:	opposite
	Coolant:	EXT
	Pressure max [bar]:	25
	Please note:	stronger bearing
	Center distance [mm]:	140
<b>8 030 58 035</b>	<b>Radial drilling and milling head Weldon 32 IC</b>	
	Weight [kg]:	10.480
	Employment for:	Main spindle
	Version:	left
	Tool drive:	Coupling
	Shank size [mm]:	50.00
	Shank type:	VDI
	Tool adaption:	Weldon (DIN 1835 b) 32
	Gear ratio [i]:	2:1
	Torque max [Nm]:	63
	Rotation max [1/min]:	3000
	Rotating direction:	opposite
	Coolant:	IC/Ext
	Pressure max [bar]:	140
	Please note:	stronger bearing
	Center distance [mm]:	105



Part-#	Name	
<b>8 031 55 010</b>	<b>Radial milling head universal arbor 22</b>	
	Weight [kg]:	9.020
	Employment for:	Main spindle
	Version:	left
	Tool drive:	Coupling
	Shank size [mm]:	50.00
	Shank type:	VDI
	Tool adaption:	Universal arbor 22
	Gear ratio [i]:	1:1
	Torque max [Nm]:	50
	Rotation max [1/min]:	6000
	Rotating direction:	opposite
	Coolant:	EXT
	Center distance [mm]:	105
<b>8 031 56 006</b>	<b>Radial milling head universal arbor 27</b>	
	Weight [kg]:	9.760
	Employment for:	Main spindle
	Version:	left
	Tool drive:	Coupling
	Shank size [mm]:	50.00
	Shank type:	VDI
	Tool adaption:	Universal arbor 27
	Gear ratio [i]:	1:1
	Torque max [Nm]:	50
	Rotation max [1/min]:	6000
	Rotating direction:	opposite
	Coolant:	EXT
	Please note:	stronger bearing
	Center distance [mm]:	105
<b>8 039 56 010</b>	<b>Radial drilling and milling head ER 32</b>	
	Weight [kg]:	13.320
	Employment for:	Main- and sub spindle
	Version:	double spindle
	Tool drive:	Coupling
	Shank size [mm]:	50.00
	Shank type:	VDI
	Tool adaption:	ER 32
	Gear ratio [i]:	1:1
	Torque max [Nm]:	50
	Rotation max [1/min]:	5000
	Rotating direction:	same/opposite
	Coolant:	EXT
	Pressure max [bar]:	140
	Please note:	stronger bearing
<b>8 039 57 004</b>	<b>Radial drilling and milling head ER 40</b>	
	Weight [kg]:	13.480
	Employment for:	Main- and sub spindle
	Version:	double spindle
	Tool drive:	Coupling
	Shank size [mm]:	50.00
	Shank type:	VDI
	Tool adaption:	ER 40
	Gear ratio [i]:	1:1
	Torque max [Nm]:	50
	Rotation max [1/min]:	5000

Part-#	Name	
	Rotating direction:	same/opposite
	Coolant:	EXT
	Please note:	stronger bearing
	Center distance [mm]:	140
<b>8 040 56 006</b>	<b>Universal head ± 90° adjustable ER 32</b>	
	Weight [kg]:	15.340
	Tool drive:	Coupling
	Shank size [mm]:	50.00
	Shank type:	VDI
	Tool adaption:	ER 32
	Gear ratio [i]:	1:1
	Torque max [Nm]:	50
	Rotation max [1/min]:	6000
	Rotating direction:	same
	Coolant:	EXT
	Center distance [mm]:	123
<b>8 040 57 007</b>	<b>Universal head ± 90° adjustable ER 40</b>	
	Weight [kg]:	15.480
	Tool drive:	Coupling
	Shank size [mm]:	50.00
	Shank type:	VDI
	Tool adaption:	ER 40
	Gear ratio [i]:	1:1
	Torque max [Nm]:	50
	Rotation max [1/min]:	4000
	Rotating direction:	same
	Coolant:	EXT
	Center distance [mm]:	123
<b>8 202 50 002</b>	<b>Basic holder longitudinal seat FN 12</b>	
	Weight [kg]:	2.730
	Version:	universal
	Shank size [mm]:	50.00
	Shank type:	VDI
	Tool adaption:	Interface FN 12
	Coolant:	EXT
<b>8 209 54 000</b>	<b>Adapter for VDI 40</b>	
	Weight [kg]:	7.920
	Version:	left
	Shank size [mm]:	50.00
	Shank type:	VDI
	Tool adaption:	DIN 69880 - 40
	Coolant:	EXT
	Center distance [mm]:	105
<b>8 209 54 001</b>	<b>Adapter for VDI 40</b>	
	Weight [kg]:	7.940
	Version:	left
	Shank size [mm]:	50.00
	Shank type:	VDI
	Tool adaption:	DIN 69880 - 40 both sides
	Coolant:	EXT
	Center distance [mm]:	105

Part-#	Name	
<b>8 215 54 002</b>	<b>Tool holder C2-50x32 - special</b>	
	Weight [kg]:	5.790
	Version:	Left
	Shank size [mm]:	50.00
	Shank type:	VDI
	Tool adaption:	Sq. 32/25
	Coolant:	EXT
<b>8 215 54 003</b>	<b>Tool holder C4-50x32 - special</b>	
	Version:	Left
	Shank size [mm]:	50.00
	Shank type:	VDI
	Tool adaption:	Sq. 32/25
	Coolant:	EXT
<b>8 231 57 000</b>	<b>Collet chuck holder ER 40</b>	
	Weight [kg]:	9.370
	Version:	left
	Shank size [mm]:	50.00
	Shank type:	VDI
	Tool adaption:	ER 40
	Coolant:	IC/Ext
	Please note:	demountable in right version
	Center distance [mm]:	140
<b>8 231 57 002</b>	<b>Boring bar holder Ø 25</b>	
	Weight [kg]:	8.310
	Version:	right / left
	Shank size [mm]:	50.00
	Shank type:	VDI
	Tool adaption:	Ø 25
	Coolant:	IC/Ext
	Please note:	demountable in right version
	Center distance [mm]:	105
<b>8 231 58 000</b>	<b>Boring bar holder Ø 32</b>	
	Weight [kg]:	8.080
	Employment for:	Heavy duty cutting
	Version:	right / left
	Shank size [mm]:	50.00
	Shank type:	VDI
	Tool adaption:	Ø 32
	Coolant:	IC/Ext
	Please note:	demountable in right version
	Center distance [mm]:	105
<b>8 231 59 000</b>	<b>Boring bar holder Ø 40</b>	
	Weight [kg]:	7.800
	Employment for:	Heavy duty cutting
	Version:	left
	Shank size [mm]:	50.00
	Shank type:	VDI
	Tool adaption:	Ø 40
	Coolant:	IC/Ext
	Please note:	demountable in right version
	Center distance [mm]:	105

Part-#	Name	
	<b>8 231 59 001 Boring bar holder Ø 50</b>	Weight [kg]: 8.580 Employment for: Heavy duty cutting Version: left Shank size [mm]: 50.00 Shank type: VDI Tool adaption: Ø 50 Coolant: IC/Ext Pressure max [bar]: 140 Please note: demountable in right version Center distance [mm]: 105
	<b>8 239 57 001 Double collet chuck holder ER 40</b>	Weight [kg]: 9.750 Employment for: Main- and sub spindle Shank size [mm]: 50.00 Shank type: VDI Tool adaption: ER 40 Coolant: IC/Ext Center distance [mm]: 140
	<b>8 239 58 001 Double boring bar holder Ø 32</b>	Weight [kg]: 12.220 Shank size [mm]: 50.00 Shank type: VDI Tool adaption: Ø 32 Coolant: IC/Ext Center distance [mm]: 140
	<b>8 239 58 002 Double tool holder HT 6</b>	Employment for: Main- and sub spindle Shank size [mm]: 50.00 Shank type: VDI Tool adaption: HT 6 Coolant: IC/Ext Center distance [mm]: 140
	<b>8 239 58 004 Double tool holder HT 6</b>	Employment for: Main- and sub spindle Version: Special Shank size [mm]: 50.00 Shank type: VDI Tool adaption: HT 6 Coolant: IC/Ext Center distance [mm]: 140
	<b>8 239 59 001 Double boring bar holder Ø 40</b>	Weight [kg]: 11.820 Employment for: Heavy duty cutting Shank size [mm]: 50.00 Shank type: VDI Tool adaption: Ø 40 Coolant: IC/Ext Center distance [mm]: 140

# SPINNER TC 77-SMC

Part-#	Name	
<b>8 320 52 000</b>	<b>Cut-off holder, height adjustable SH 26 IC</b>	
	Version:	universal
	Shank size [mm]:	50.00
	Shank type:	VDI
	Tool adaption:	Clampshaft SH 26
	Coolant:	IC/Ext
	Pressure max [bar]:	70
<b>8 320 53 002</b>	<b>Cut-off holder, height adjustable SH 32</b>	
	Weight [kg]:	3.260
	Shank size [mm]:	50.00
	Shank type:	VDI
	Tool adaption:	Clampshaft SH 32
	Coolant:	EXT
<b>8 320 53 003</b>	<b>Cut-off holder, height adjustable SH 32 IC</b>	
	Weight [kg]:	3.260
	Version:	universal
	Shank size [mm]:	50.00
	Shank type:	VDI
	Tool adaption:	Clampshaft SH 32
	Coolant:	IC/Ext
	Pressure max [bar]:	70
<b>8 320 59 000</b>	<b>Cut-off holder, height adjustable 845 IC</b>	
	Version:	universal
	Shank size [mm]:	50.00
	Shank type:	VDI
	Tool adaption:	 System 845
	Coolant:	IC
	Pressure max [bar]:	70



## heimatec.u-tec®

heimatec.com

Products / Tool change systems /  
u-tec® Tool-changing system



versions see catalog



## heimatec.easy-quick

heimatec.com

Products / Tool change systems /  
easy-quick HT quick-changing system



versions see catalog



## heimatec.Capto™

heimatec.com

Products / Tool change systems /  
heimatec.Capto™ quick-changing system



versions see catalog



## heimatec.accessories

heimatec.com

Products / Accessories



versions see catalog





● heimatec overseas branches

○ global representations of heimatec

**heimatec**<sup>®</sup>

**heimatec GmbH**  
Präzisionswerkzeuge  
Carl-Benz-Str. 4  
77871 Renchen  
Germany

T +49 7843 9466 0  
[www.heimatec.com](http://www.heimatec.com)  
[info@heimatec.com](mailto:info@heimatec.com)

Please find the contact details of our worldwide trading partners on our website:  
<https://heimatec.com/business-partners>