

SPINNER
TC 77-SMCY



High-tech from heimatec - heimatec - Tools and systems for productive turning and milling

heimatec belongs to the international technology and quality leaders for precision tools and specializes in the development and production of high-precision static and live tools for all CNC lathes, CNC turn-/mill machines and CNC machining centers.

The range of products* spans from static BMT and VDI tool holders, live tools up to highly complex customer-specific individual solutions. heimatec, headquartered in Renchen, has a own subsidiary in Asia and India and numerous representatives as well as trading partners all over the world.

*OUR PRODCUTS

Static tool holders

Live tool units

Precision tools

Tools for turning and machining centres

Tools for swiss type lathes

Tool changing and uick-change systems

Tool systems for gear production

Digital tool management

This catalogue, including all its parts, is protected by copyright. Any use outside the restricted limitations of the Copyright Act without the consent of heimatec is inadmissible and liable to prosecution. This applies in particular to duplication, translation, microfilming and storage and processing in electronic systems.

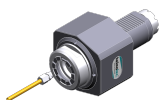
heimatec GmbH reserves the right to make technical changes at any time without giving prior notice. This applies in particular to adjustments at any time to meet new or changed international standards, or in case of further developments of our products or manufacturing processes.

The current version of our General Terms and Conditions can be found on our website.

SPINNER

TC 77-SMCY

| Part-# | Name | |
|---------------------|-------------------------------------------------------|-----------------|
| 8 010 56 033 | Axial drilling and milling head ER 32 IC | |
| | Weight [kg]: | 5.470 |
| | Tool drive: | Coupling |
| | Shank size [mm]: | 50.00 |
| | Shank type: | VDI |
| | Tool adaption: | ER 32 |
| | Gear ratio [i]: | 1:1 |
| | Torque max [Nm]: | 80 |
| | Rotation max [1/min]: | 4000 |
| | Rotating direction: | same |
| | Coolant: | IC/Ext |
| | Pressure max [bar]: | 25 |
| 8 010 57 015 | Axial drilling and milling head ER 40 | |
| | Weight [kg]: | 5.390 |
| | Tool drive: | Coupling |
| | Shank size [mm]: | 50.00 |
| | Shank type: | VDI |
| | Tool adaption: | ER 40 |
| | Gear ratio [i]: | 1:1 |
| | Torque max [Nm]: | 80 |
| | Rotation max [1/min]: | 4000 |
| | Rotating direction: | same |
| | Coolant: | EXT |
| 8 010 57 036 | Axial drilling and milling head ER 40 IC | |
| | Weight [kg]: | 5.590 |
| | Tool drive: | Coupling |
| | Shank size [mm]: | 50.00 |
| | Shank type: | VDI |
| | Tool adaption: | ER 40 |
| | Gear ratio [i]: | 1:1 |
| | Torque max [Nm]: | 80 |
| | Rotation max [1/min]: | 4000 |
| | Rotating direction: | same |
| | Coolant: | IC/Ext |
| | Pressure max [bar]: | 25 |
| 8 010 57 083 | Axial drilling and milling head ER 40 AX UT | |
| | Weight [kg]: | 5.120 |
| | Tool drive: | Coupling |
| | Shank size [mm]: | 50.00 |
| | Shank type: | VDI |
| | Tool adaption: | ER 40 A - u-tec |
| | Gear ratio [i]: | 1:1 |
| | Torque max [Nm]: | 80 |
| | Rotation max [1/min]: | 4000 |
| | Rotating direction: | same |
| | Coolant: | EXT |
| 8 010 57 084 | Axial drilling and milling head ER 40 AX UT IC | |
| | Weight [kg]: | 5.280 |
| | Tool drive: | Coupling |
| | Shank size [mm]: | 50.00 |
| | Shank type: | VDI |
| | Tool adaption: | ER 40 u-tec |
| | Gear ratio [i]: | 1:1 |



SPINNER

TC 77-SMCY

| Part-# | Name | |
|---------------------|------------------------------------------------|-----------------------|
| | Torque max [Nm]: | 80 |
| | Rotation max [1/min]: | 4000 |
| | Rotating direction: | same |
| | Coolant: | IC/Ext |
| | Pressure max [bar]: | 25 |
| 8 010 58 010 | Axial drilling and milling head HT 6 | |
| | Weight [kg]: | 5.360 |
| | Tool drive: | Coupling |
| | Shank size [mm]: | 50.00 |
| | Tool adaption: | HT 6 |
| | Gear ratio [i]: | 1:1 |
| | Torque max [Nm]: | 80 |
| | Rotation max [1/min]: | 4000 |
| | Rotating direction: | same |
| | Coolant: | EXT |
| 8 010 58 011 | Axial drilling and milling head HT 6 IC | |
| | Weight [kg]: | 5.570 |
| | Tool drive: | Coupling |
| | Shank size [mm]: | 50.00 |
| | Shank type: | VDI |
| | Tool adaption: | HT 6 |
| | Gear ratio [i]: | 1:1 |
| | Torque max [Nm]: | 80 |
| | Rotation max [1/min]: | 4000 |
| | Rotating direction: | same |
| | Coolant: | IC/Ext |
| | Pressure max [bar]: | 25 |
| 8 011 55 011 | Axial milling head universal arbor 22 | |
| | Weight [kg]: | 5.350 |
| | Tool drive: | Coupling |
| | Shank size [mm]: | 50.00 |
| | Shank type: | VDI |
| | Tool adaption: | Universal arbor 22 |
| | Gear ratio [i]: | 1:1 |
| | Torque max [Nm]: | 80 |
| | Rotation max [1/min]: | 4000 |
| | Rotating direction: | same |
| | Coolant: | EXT |
| 8 011 56 006 | Axial milling head universal arbor 27 | |
| | Weight [kg]: | 7.120 |
| | Tool drive: | Coupling |
| | Shank size [mm]: | 50.00 |
| | Shank type: | VDI |
| | Tool adaption: | Universal arbor 27 |
| | Gear ratio [i]: | 1:1 |
| | Torque max [Nm]: | 80 |
| | Rotation max [1/min]: | 3000 |
| | Rotating direction: | same |
| | Coolant: | EXT |
| | Please note: | Taper roller bearings |

| Part-# | Name | |
|---------------------|----------------------------------------------------|--------------------|
| 8 013 54 021 | Axial drilling and milling head ER 16 AX UT | |
| | Weight [kg]: | 3.520 |
| | Tool drive: | Coupling |
| | Shank size [mm]: | 50.00 |
| | Shank type: | VDI |
| | Tool adaption: | ER 16 A - u-tec |
| | Gear ratio [i]: | 1:4 |
| | Torque max [Nm]: | 5 |
| | Rotation max [1/min]: | 24000 |
| | Rotating direction: | same |
| | Coolant: | EXT |
| | Please note: | round housing ø 98 |
| 8 019 55 061 | Axial milling head universal arbor 22 | |
| | Weight [kg]: | 8.580 |
| | Notation: | offset |
| | Version: | left |
| | Tool drive: | Coupling |
| | Shank size [mm]: | 50.00 |
| | Shank type: | VDI |
| | Tool adaption: | Universal arbor 22 |
| | Gear ratio [i]: | 2:1 |
| | Torque max [Nm]: | 80 |
| | Rotation max [1/min]: | 3000 |
| | Rotating direction: | opposite |
| | Coolant: | EXT |
| | Please note: | stronger bearing |
| 8 019 56 019 | Axial drilling and milling head ER 32 | |
| | Notation: | offset |
| | Version: | left |
| | Tool drive: | Coupling |
| | Shank size [mm]: | 50.00 |
| | Shank type: | VDI |
| | Tool adaption: | ER 32 |
| | Gear ratio [i]: | 1:2 |
| | Torque max [Nm]: | 40 |
| | Rotation max [1/min]: | 10000 |
| | Rotating direction: | opposite |
| | Coolant: | EXT |
| | Offset [mm]: | 50 |
| 8 019 56 027 | Axial drilling and milling head ER 32 AX UT | |
| | Weight [kg]: | 8.200 |
| | Notation: | offset |
| | Version: | left |
| | Tool drive: | Coupling |
| | Shank size [mm]: | 50.00 |
| | Shank type: | VDI |
| | Tool adaption: | ER 32 A - u-tec |
| | Gear ratio [i]: | 1:2 |
| | Torque max [Nm]: | 40 |
| | Rotation max [1/min]: | 10000 |
| | Rotating direction: | opposite |
| | Coolant: | EXT |
| | Offset [mm]: | 50 |

SPINNER
TC 77-SMCY

| Part-# | Name | |
|---------------------|-----------------------------------------------------|-----------------|
| 8 030 56 160 | Radial drilling and milling head ER 32 AX UT | |
| | Weight [kg]: | 8.840 |
| | Employment for: | Main spindle |
| | Version: | left |
| | Tool drive: | Coupling |
| | Shank size [mm]: | 50.00 |
| | Shank type: | VDI |
| | Tool adaption: | ER 32 A - u-tec |
| | Gear ratio [i]: | 1:1 |
| | Torque max [Nm]: | 50 |
| | Rotation max [1/min]: | 6000 |
| | Rotating direction: | opposite |
| | Coolant: | EXT |
| | Center distance [mm]: | 105 |
| 8 030 57 036 | Radial drilling and milling head ER 40 | |
| | Weight [kg]: | 9.060 |
| | Employment for: | Main spindle |
| | Version: | left |
| | Tool drive: | Coupling |
| | Shank size [mm]: | 50.00 |
| | Shank type: | VDI |
| | Tool adaption: | ER 40 |
| | Gear ratio [i]: | 1:1 |
| | Torque max [Nm]: | 50 |
| | Rotation max [1/min]: | 6000 |
| | Rotating direction: | opposite |
| | Coolant: | EXT |
| | Center distance [mm]: | 105 |
| 8 030 57 037 | Radial drilling and milling head ER 40 IC | |
| | Weight [kg]: | 9.530 |
| | Employment for: | Main spindle |
| | Version: | left |
| | Tool drive: | Coupling |
| | Shank size [mm]: | 50.00 |
| | Shank type: | VDI |
| | Tool adaption: | ER 40 |
| | Gear ratio [i]: | 1:1 |
| | Torque max [Nm]: | 50 |
| | Rotation max [1/min]: | 6000 |
| | Rotating direction: | opposite |
| | Coolant: | IC/Ext |
| | Pressure max [bar]: | 140 |
| | Center distance [mm]: | 105 |
| 8 030 57 038 | Radial drilling and milling head ER 40 | |
| | Weight [kg]: | 10.020 |
| | Employment for: | Sub spindle |
| | Version: | right |
| | Tool drive: | Coupling |
| | Shank size [mm]: | 50.00 |
| | Shank type: | VDI |
| | Tool adaption: | ER 40 |
| | Gear ratio [i]: | 1:1 |
| | Torque max [Nm]: | 50 |
| | Rotation max [1/min]: | 6000 |
| | Rotating direction: | opposite |

SPINNER

TC 77-SMCY

| Part-# | Name | |
|---------------------|--------------------------------------------------------|------------------|
| | Coolant: | EXT |
| | Center distance [mm]: | 140 |
| 8 030 57 121 | Radial drilling and milling head ER 40 AX UT | |
| | Weight [kg]: | 9.830 |
| | Employment for: | Main spindle |
| | Version: | left |
| | Tool drive: | Coupling |
| | Shank size [mm]: | 50.00 |
| | Shank type: | VDI |
| | Tool adaption: | ER 40 u-tec |
| | Gear ratio [i]: | 1:1 |
| | Torque max [Nm]: | 50 |
| | Rotation max [1/min]: | 6000 |
| | Rotating direction: | opposite |
| | Coolant: | EXT |
| | Center distance [mm]: | 105 |
| 8 030 57 122 | Radial drilling and milling head ER 40 AX UT IC | |
| | Employment for: | Main spindle |
| | Version: | left |
| | Tool drive: | Coupling |
| | Shank size [mm]: | 50.00 |
| | Shank type: | VDI |
| | Tool adaption: | ER 40 u-tec |
| | Gear ratio [i]: | 1:1 |
| | Torque max [Nm]: | 50 |
| | Rotation max [1/min]: | 6000 |
| | Rotating direction: | opposite |
| | Coolant: | IC/Ext |
| | Pressure max [bar]: | 140 |
| | Center distance [mm]: | 105 |
| 8 030 58 005 | Radial drilling and milling head HT 6 | |
| | Weight [kg]: | 9.700 |
| | Employment for: | Main spindle |
| | Version: | left |
| | Tool drive: | Coupling |
| | Shank size [mm]: | 50.00 |
| | Shank type: | VDI |
| | Tool adaption: | HT 6 |
| | Gear ratio [i]: | 1:1 |
| | Torque max [Nm]: | 50 |
| | Rotation max [1/min]: | 5000 |
| | Rotating direction: | opposite |
| | Coolant: | EXT |
| | Please note: | stronger bearing |
| | Center distance [mm]: | 105 |
| 8 030 58 006 | Radial drilling and milling head HT 6 IC | |
| | Weight [kg]: | 10.460 |
| | Employment for: | Main spindle |
| | Version: | left |
| | Tool drive: | Coupling |
| | Shank size [mm]: | 50.00 |
| | Shank type: | VDI |
| | Tool adaption: | HT 6 |
| | Gear ratio [i]: | 1:1 |

SPINNER
TC 77-SMCY

| Part-# | Name | |
|---------------------|------------------------------------------------------|------------------------|
| | Torque max [Nm]: | 50 |
| | Rotation max [1/min]: | 5000 |
| | Rotating direction: | opposite |
| | Coolant: | IC/Ext |
| | Pressure max [bar]: | 140 |
| | Please note: | stronger bearing |
| | Center distance [mm]: | 105 |
| 8 030 58 007 | Radial drilling and milling head HT 6 | |
| | Employment for: | Sub spindle |
| | Version: | right |
| | Tool drive: | Coupling |
| | Shank size [mm]: | 50.00 |
| | Shank type: | VDI |
| | Tool adaption: | HT 6 |
| | Gear ratio [i]: | 1:1 |
| | Torque max [Nm]: | 50 |
| | Rotation max [1/min]: | 5000 |
| | Rotating direction: | opposite |
| | Coolant: | EXT |
| | Please note: | stronger bearing |
| | Center distance [mm]: | 140 |
| 8 030 58 008 | Radial drilling and milling head HT 6 IC | |
| | Employment for: | Sub spindle |
| | Version: | right |
| | Tool drive: | Coupling |
| | Shank size [mm]: | 50.00 |
| | Shank type: | VDI |
| | Tool adaption: | HT 6 |
| | Gear ratio [i]: | 1:1 |
| | Torque max [Nm]: | 50 |
| | Rotation max [1/min]: | 5000 |
| | Rotating direction: | opposite |
| | Coolant: | EXT |
| | Pressure max [bar]: | 25 |
| | Please note: | stronger bearing |
| | Center distance [mm]: | 140 |
| 8 030 58 035 | Radial drilling and milling head Weldon 32 IC | |
| | Weight [kg]: | 10.480 |
| | Employment for: | Main spindle |
| | Version: | left |
| | Tool drive: | Coupling |
| | Shank size [mm]: | 50.00 |
| | Shank type: | VDI |
| | Tool adaption: | Weldon (DIN 1835 b) 32 |
| | Gear ratio [i]: | 2:1 |
| | Torque max [Nm]: | 63 |
| | Rotation max [1/min]: | 3000 |
| | Rotating direction: | opposite |
| | Coolant: | IC/Ext |
| | Pressure max [bar]: | 140 |
| | Please note: | stronger bearing |
| | Center distance [mm]: | 105 |

SPINNER
TC 77-SMCY

| Part-# | Name | |
|---------------------|-----------------------------------------------|-----------------------|
| 8 031 55 010 | Radial milling head universal arbor 22 | |
| | Weight [kg]: | 9.020 |
| | Employment for: | Main spindle |
| | Version: | left |
| | Tool drive: | Coupling |
| | Shank size [mm]: | 50.00 |
| | Shank type: | VDI |
| | Tool adaption: | Universal arbor 22 |
| | Gear ratio [i]: | 1:1 |
| | Torque max [Nm]: | 50 |
| | Rotation max [1/min]: | 6000 |
| | Rotating direction: | opposite |
| | Coolant: | EXT |
| | Center distance [mm]: | 105 |
| 8 031 56 006 | Radial milling head universal arbor 27 | |
| | Weight [kg]: | 9.760 |
| | Employment for: | Main spindle |
| | Version: | left |
| | Tool drive: | Coupling |
| | Shank size [mm]: | 50.00 |
| | Shank type: | VDI |
| | Tool adaption: | Universal arbor 27 |
| | Gear ratio [i]: | 1:1 |
| | Torque max [Nm]: | 50 |
| | Rotation max [1/min]: | 6000 |
| | Rotating direction: | opposite |
| | Coolant: | EXT |
| | Please note: | stronger bearing |
| | Center distance [mm]: | 105 |
| 8 039 56 010 | Radial drilling and milling head ER 32 | |
| | Weight [kg]: | 13.320 |
| | Employment for: | Main- and sub spindle |
| | Version: | double spindle |
| | Tool drive: | Coupling |
| | Shank size [mm]: | 50.00 |
| | Shank type: | VDI |
| | Tool adaption: | ER 32 |
| | Gear ratio [i]: | 1:1 |
| | Torque max [Nm]: | 50 |
| | Rotation max [1/min]: | 5000 |
| | Rotating direction: | same/opposite |
| | Coolant: | EXT |
| | Pressure max [bar]: | 140 |
| | Please note: | stronger bearing |
| 8 039 57 004 | Radial drilling and milling head ER 40 | |
| | Weight [kg]: | 13.480 |
| | Employment for: | Main- and sub spindle |
| | Version: | double spindle |
| | Tool drive: | Coupling |
| | Shank size [mm]: | 50.00 |
| | Shank type: | VDI |
| | Tool adaption: | ER 40 |
| | Gear ratio [i]: | 1:1 |
| | Torque max [Nm]: | 50 |
| | Rotation max [1/min]: | 5000 |

SPINNER

TC 77-SMCY


| Part-# | Name | |
|---------------------|----------------------------------------------|---------------------------|
| | Rotating direction: | same/opposite |
| | Coolant: | EXT |
| | Please note: | stronger bearing |
| | Center distance [mm]: | 140 |
| 8 040 56 006 | Universal head ± 90° adjustable ER 32 | |
| | Weight [kg]: | 15.340 |
| | Tool drive: | Coupling |
| | Shank size [mm]: | 50.00 |
| | Shank type: | VDI |
| | Tool adaption: | ER 32 |
| | Gear ratio [i]: | 1:1 |
| | Torque max [Nm]: | 50 |
| | Rotation max [1/min]: | 6000 |
| | Rotating direction: | same |
| | Coolant: | EXT |
| | Center distance [mm]: | 123 |
| 8 040 57 007 | Universal head ± 90° adjustable ER 40 | |
| | Weight [kg]: | 15.480 |
| | Tool drive: | Coupling |
| | Shank size [mm]: | 50.00 |
| | Shank type: | VDI |
| | Tool adaption: | ER 40 |
| | Gear ratio [i]: | 1:1 |
| | Torque max [Nm]: | 50 |
| | Rotation max [1/min]: | 4000 |
| | Rotating direction: | same |
| | Coolant: | EXT |
| | Center distance [mm]: | 123 |
| 8 202 50 002 | Basic holder longitudinal seat FN 12 | |
| | Weight [kg]: | 2.730 |
| | Version: | universal |
| | Shank size [mm]: | 50.00 |
| | Shank type: | VDI |
| | Tool adaption: | Interface FN 12 |
| | Coolant: | EXT |
| 8 209 54 000 | Adapter for VDI 40 | |
| | Weight [kg]: | 7.920 |
| | Version: | left |
| | Shank size [mm]: | 50.00 |
| | Shank type: | VDI |
| | Tool adaption: | DIN 69880 - 40 |
| | Coolant: | EXT |
| | Center distance [mm]: | 105 |
| 8 209 54 001 | Adapter for VDI 40 | |
| | Weight [kg]: | 7.940 |
| | Version: | left |
| | Shank size [mm]: | 50.00 |
| | Shank type: | VDI |
| | Tool adaption: | DIN 69880 - 40 both sides |
| | Coolant: | EXT |
| | Center distance [mm]: | 105 |

SPINNER
TC 77-SMCY



| Part-# | Name | |
|---------------------|---------------------------------------|------------------------------|
| 8 215 54 002 | Tool holder C2-50x32 - special | |
| | Weight [kg]: | 5.790 |
| | Version: | Left |
| | Shank size [mm]: | 50.00 |
| | Shank type: | VDI |
| | Tool adaption: | Sq. 32/25 |
| | Coolant: | EXT |
| 8 215 54 003 | Tool holder C4-50x32 - special | |
| | Version: | Left |
| | Shank size [mm]: | 50.00 |
| | Shank type: | VDI |
| | Tool adaption: | Sq. 32/25 |
| | Coolant: | EXT |
| 8 231 57 000 | Collet chuck holder ER 40 | |
| | Weight [kg]: | 9.370 |
| | Version: | left |
| | Shank size [mm]: | 50.00 |
| | Shank type: | VDI |
| | Tool adaption: | ER 40 |
| | Coolant: | IC/Ext |
| | Please note: | demountable in right version |
| | Center distance [mm]: | 140 |
| 8 231 57 002 | Boring bar holder Ø 25 | |
| | Weight [kg]: | 8.310 |
| | Version: | right / left |
| | Shank size [mm]: | 50.00 |
| | Shank type: | VDI |
| | Tool adaption: | Ø 25 |
| | Coolant: | IC/Ext |
| | Please note: | demountable in right version |
| | Center distance [mm]: | 105 |
| 8 231 58 000 | Boring bar holder Ø 32 | |
| | Weight [kg]: | 8.080 |
| | Employment for: | Heavy duty cutting |
| | Version: | right / left |
| | Shank size [mm]: | 50.00 |
| | Shank type: | VDI |
| | Tool adaption: | Ø 32 |
| | Coolant: | IC/Ext |
| | Please note: | demountable in right version |
| | Center distance [mm]: | 105 |
| 8 231 59 000 | Boring bar holder Ø 40 | |
| | Weight [kg]: | 7.800 |
| | Employment for: | Heavy duty cutting |
| | Version: | left |
| | Shank size [mm]: | 50.00 |
| | Shank type: | VDI |
| | Tool adaption: | Ø 40 |
| | Coolant: | IC/Ext |
| | Please note: | demountable in right version |
| | Center distance [mm]: | 105 |

SPINNER

TC 77-SMCY

| Part-# | Name | |
|-----------------------------------------------------------------------------------|------------------------------------------------------|------------------------------|
|  | 8 231 59 001 Boring bar holder Ø 50 | 8.580 |
| | Weight [kg]: | 8.580 |
| | Employment for: | Heavy duty cutting |
| | Version: | left |
| | Shank size [mm]: | 50.00 |
| | Shank type: | VDI |
| | Tool adaption: | Ø 50 |
| | Coolant: | IC/Ext |
| | Pressure max [bar]: | 140 |
| | Please note: | demountable in right version |
| Center distance [mm]: | 105 | |
| | 8 239 57 001 Double collet chuck holder ER 40 | 9.750 |
| | Weight [kg]: | 9.750 |
| | Employment for: | Main- and sub spindle |
| | Shank size [mm]: | 50.00 |
| | Shank type: | VDI |
| | Tool adaption: | ER 40 |
| | Coolant: | IC/Ext |
| Center distance [mm]: | 140 | |
| | 8 239 58 001 Double boring bar holder Ø 32 | 12.220 |
| | Weight [kg]: | 12.220 |
| | Shank size [mm]: | 50.00 |
| | Shank type: | VDI |
| | Tool adaption: | Ø 32 |
| | Coolant: | IC/Ext |
| Center distance [mm]: | 140 | |
| | 8 239 58 002 Double tool holder HT 6 | |
| | Employment for: | Main- and sub spindle |
| | Shank size [mm]: | 50.00 |
| | Shank type: | VDI |
| | Tool adaption: | HT 6 |
| | Coolant: | IC/Ext |
| Center distance [mm]: | 140 | |
| | 8 239 58 004 Double tool holder HT 6 | |
| | Employment for: | Main- and sub spindle |
| | Version: | Special |
| | Shank size [mm]: | 50.00 |
| | Shank type: | VDI |
| | Tool adaption: | HT 6 |
| | Coolant: | IC/Ext |
| Center distance [mm]: | 140 | |
| | 8 239 59 001 Double boring bar holder Ø 40 | 11.820 |
| | Weight [kg]: | 11.820 |
| | Employment for: | Heavy duty cutting |
| | Shank size [mm]: | 50.00 |
| | Shank type: | VDI |
| | Tool adaption: | Ø 40 |
| | Coolant: | IC/Ext |
| Center distance [mm]: | 140 | |

SPINNER TC 77-SMCY

| Part-# | Name | |
|-----------------------------------------------------------------------------------|---------------------------------------------------|------------------------------------------------------------------------------------------------|
| 8 320 52 000 | Cut-off holder, height adjustable SH 26 IC | |
|  | Version: | universal |
| | Shank size [mm]: | 50.00 |
| | Shank type: | VDI |
| | Tool adaption: | Clampshaft SH 26 |
| | Coolant: | IC/Ext |
| | Pressure max [bar]: | 70 |
| 8 320 53 002 | Cut-off holder, height adjustable SH 32 | |
| | Weight [kg]: | 3.260 |
| | Shank size [mm]: | 50.00 |
| | Shank type: | VDI |
| | Tool adaption: | Clampshaft SH 32 |
| | Coolant: | EXT |
| 8 320 53 003 | Cut-off holder, height adjustable SH 32 IC | |
| | Weight [kg]: | 3.260 |
| | Version: | universal |
| | Shank size [mm]: | 50.00 |
| | Shank type: | VDI |
| | Tool adaption: | Clampshaft SH 32 |
| | Coolant: | IC/Ext |
| | Pressure max [bar]: | 70 |
| 8 320 59 000 | Cut-off holder, height adjustable 845 IC | |
| | Version: | universal |
| | Shank size [mm]: | 50.00 |
| | Shank type: | VDI |
| | Tool adaption: |  System 845 |
| | Coolant: | IC |
| | Pressure max [bar]: | 70 |



heimatec.u-tec®

heimatec.com

Products / Tool change systems /
u-tec® Tool-changing system



versions see catalog



heimatec.easy-quick

heimatec.com

Products / Tool change systems /
easy-quick HT quick-changing system



versions see catalog



heimatec.Capto™

heimatec.com

Products / Tool change systems /
heimatec.Capto™ quick-changing system



versions see catalog



heimatec.accessories

heimatec.com

Products / Accessories



versions see catalog





● heimatec overseas branches

○ global representations of heimatec

heimatec[®]

heimatec GmbH
Präzisionswerkzeuge
Carl-Benz-Str. 4
77871 Renchen
Germany

T +49 7843 9466 0
www.heimatec.com
info@heimatec.com

Please find the contact details of our worldwide trading partners on our website:
<https://heimatec.com/business-partners>