

**TOPSELLER -**  
many more available!

Live Tools

**heimatec**®

# SMEC

## PL 2500 Y/SY/MS

| Part-#  | Tool adaption          | Rotation max [1/min] | Gear ratio | Coolant | Pressure max. | Center distance |
|---|------------------------|----------------------|------------|---------|---------------|-----------------|
| <b>Axial drilling and milling head</b>                  |                        |                      |            |         |               |                 |
| 8 010 66 143  | <b>ER 32 A - u-tec</b> | 12.000               | 1:1        | IC/Ext  | 100 bar       | --              |
| 8 010 66 144  | <b>ER 32 A - u-tec</b> | 12.000               | 1:1        | IC/Ext  | 25 bar        | --              |
| 8 010 66 145  | <b>ER 32 A - u-tec</b> | 12.000               | 1:1        | EXT     | 140 bar       | --              |
| <b>Radial drilling and milling head</b>                 |                        |                      |            |         |               |                 |
| 8 030 66 239  | <b>ER 32 A - u-tec</b> | 10.000               | 1:1        | EXT     | 140 bar       | <b>72 mm</b>    |
| 8 030 66 243  | <b>ER 32 A - u-tec</b> | 10.000               | 1:1        | IC/Ext  | 140 bar       | <b>72 mm</b>    |
| <b>Radial drilling and milling head, double spindle</b> |                        |                      |            |         |               |                 |
| 8 039 66 025  | <b>ER 32 A - u-tec</b> | 10.000               | 1:1        | EXT     | --            | <b>72 mm</b>    |
| <b>Universal head, offset</b>                           |                        |                      |            |         |               |                 |
| 8 043 65 000  | <b>ER 25 A - u-tec</b> | 6.000                | 1:1        | EXT     | --            | <b>69 mm</b>    |
| 8 043 65 004  | <b>ER 25 A - u-tec</b> | 6.000                | 1:1        | IC/Ext  | 140 bar       | <b>69 mm</b>    |

Illustrations similar.



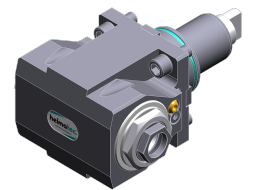
8 010 66 143



8 010 66 144



8 030 66 239



8 039 66 025



8 043 65 000

**TOPSELLER -**  
many more available!

Static Tools

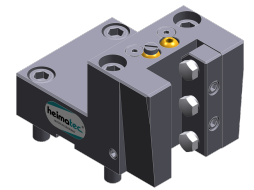
**heimatec**®

# SMEC

## PL 2500 Y/SY/MS

| Part-#                          | Tool adaption | Coolant | Pressure max. | Center distance |
|---------------------------------|---------------|---------|---------------|-----------------|
| <b>Universal turning holder</b> |               |         |               |                 |
| 8 224 15 006                    | <b>Sq. 25</b> | EXT     | 80 bar        | --              |
| 8 224 15 053                    | <b>Sq. 25</b> | IC/Ext  | 100 bar       | --              |
| <b>Boring bar holder</b>        |               |         |               |                 |
| 8 240 17 044                    | <b>Ø 25</b>   | IC/Ext  | --            | <b>72 mm</b>    |
| 8 240 18 028                    | <b>Ø 32</b>   | IC/Ext  | --            | <b>72 mm</b>    |
| 8 240 19 067                    | <b>Ø 50</b>   | IC/Ext  | 80 bar        | <b>72 mm</b>    |
| <b>Combi facing holder</b>      |               |         |               |                 |
| 8 244 15 005                    | <b>Sq. 25</b> | EXT     | 80 bar        | --              |
| <b>Double turning holder</b>    |               |         |               |                 |
| 8 251 15 003                    | <b>Sq. 25</b> | EXT     | 80 bar        | --              |
| 8 251 15 046                    | <b>Sq. 25</b> | IC/Ext  | 100 bar       | --              |

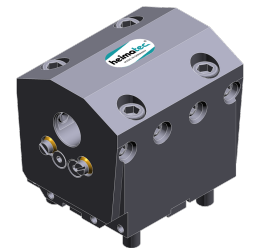
*Illustrations similar.*



8 224 15 006



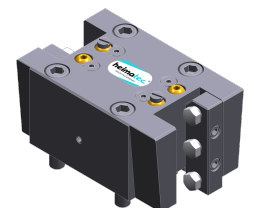
8 224 15 053



8 240 17 044



8 244 15 005



8 251 15 003