

**TOPSELLER -**  
many more available!

Live Tools

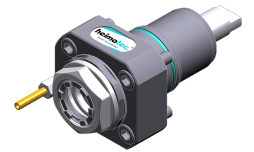
**heimatec**®

# Nakamura

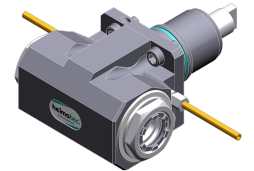
## SC-300 II - 16 Stationen

Part-#	Tool adaption	Rotation max [1/min]	Gear ratio	Coolant	Center distance
<b>Axial drilling and milling head</b>					
8 010 56 151	<b>ER 32 A - u-tec</b>	12.000	1:1	EXT	--
<b>Radial drilling and milling head, double spindle</b>					
8 039 56 016	<b>ER 32 A - u-tec</b>	12.000	1:1	EXT	<b>65 mm</b>

*Illustrations similar.*



8 010 56 151



8 039 56 016

**TOPSELLER -**  
many more available!

Static Tools

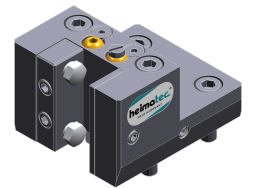
**heimatec**®

# Nakamura

## SC-300 II - 16 Stationen

Part-#	Tool adaption	Coolant	Pressure max.	Center distance
<b>Universal turning holder</b>				
8 224 15 002	<b>Sq. 25</b>	EXT	--	--
<b>Boring bar holder</b>				
8 240 18 010	<b>Ø 32</b>	IC/Ext	140 bar	<b>75 mm</b>
8 240 19 009	<b>Ø 40</b>	IC/Ext	--	<b>75 mm</b>
<b>Double turning holder</b>				
8 251 11 003	<b>Sq. 20</b>	EXT	--	--

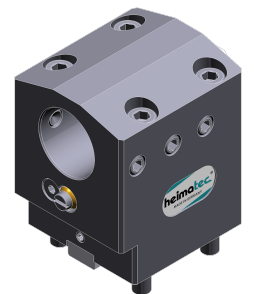
*Illustrations similar.*



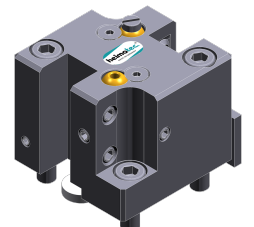
8 224 15 002



8 240 18 010



8 240 19 009



8 251 11 003