

TOPSELLER -
many more available!

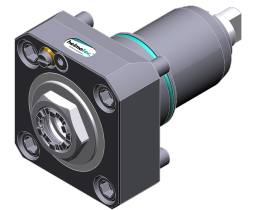
Live Tools

heimatec®

Nakamura SC-300 II M

Part-#	Tool adaption	Rotation max [1/min]	Gear ratio	Coolant	Pressure max.	Center distance
Axial drilling and milling head						
8 010 65 038	ER 25 A - u-tec	5.000	1:1	IC/Ext	100 bar	--
8 010 66 126	ER 32 A - u-tec	6.000	1:1	EXT	--	--
8 010 66 127	ER 32 A - u-tec	6.000	1:1	IC/Ext	100 bar	--
Radial drilling and milling head						
8 030 66 257	ER 32 A - u-tec	12.000	1:1	IC/Ext	140 bar	65 mm
8 030 66 263	ER 32 A - u-tec	12.000	1:1	EXT	--	65 mm
Radial drilling and milling head, double spindle						
8 039 66 028	ER 32 A - u-tec	12.000	1:1	EXT	--	65 mm
Universal head, offset						
8 043 65 002	ER 25 A - u-tec	6.000	1:1	EXT	--	60 mm

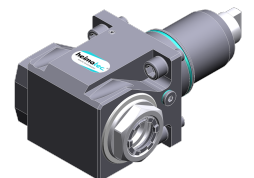
Illustrations similar.



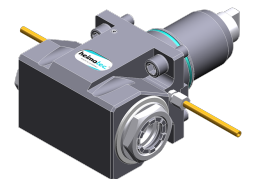
8 010 65 038



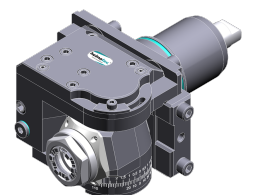
8 010 66 126



8 030 66 257



8 039 66 028



8 043 65 002

TOPSELLER -
many more available!

Static Tools

heimatec®

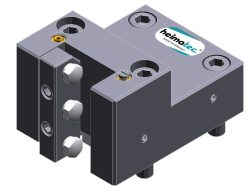
Nakamura SC-300 II M

Part-#	Tool adaption	Coolant	Pressure max.	Center distance
Cut-off holder				
8 224 13 008	Clampshaft SH 32	EXT	--	--
Universal turning holder				
8 224 15 000	Sq. 25	EXT	--	--
8 224 15 051	Sq. 25	IC/Ext	100 bar	--
Boring bar holder				
8 240 18 000	Ø 32	IC/Ext	--	90 mm
8 240 19 000	Ø 40	IC/Ext	--	90 mm
Combi multiple holder				
8 251 14 054	Sq. 19,05	EXT	--	--
8 251 14 051	Sq. 20	EXT	--	--
8 251 14 053	Sq. 20	EXT	--	--
8 251 14 090	Sq. 20	IC/Ext	100 bar	--
8 251 14 091	Sq. 20	IC/Ext	100 bar	--
8 251 14 052	Sq. 3/4"	EXT	--	--
8 251 13 013	Sq. 3/4" (19,05mm)	IC/Ext	100 bar	--
8 251 13 014	Sq. 3/4" (19,05mm)	IC/Ext	100 bar	--
Double turning holder				
8 251 15 000	Sq. 25	EXT	--	--
Cut-off holder, height adjustable				
8 320 13 004	Clampshaft SH 32	IC/Ext	70 bar	--

Illustrations similar.



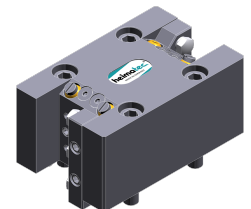
8 224 13 008



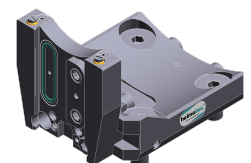
8 224 15 000



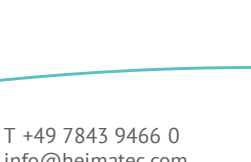
8 240 18 000



8 251 14 054



8 251 15 000



8 320 13 004