

TOPSELLER -
many more available!

Live Tools

heimatec®

HAAS ST-20/Y - VDI

| Part-# | Tool adaption | Rotation max [1/min] | Gear ratio | Coolant | Pressure max. | Center distance |
|---|------------------------|----------------------|------------|---------|---------------|-----------------|
| Axial drilling and milling head | | | | | | |
| 8 010 46 188 | ER 32 A - u-tec | 6.000 | 1:1 | EXT | -- | -- |
| 8 010 46 215 | ER 32 A - u-tec | 6.000 | 1:1 | IC/Ext | 100 bar | -- |
| Radial drilling and milling head | | | | | | |
| 8 030 46 321 | ER 32 A - u-tec | 6.000 | 1:1 | EXT | -- | 69 mm |
| 8 030 46 330 | ER 32 A - u-tec | 6.000 | 1:1 | IC/Ext | 140 bar | 69 mm |
| Universal head | | | | | | |
| 8 040 45 040 | ER 25 A - u-tec | 6.000 | 1:1 | EXT | -- | 87 mm |

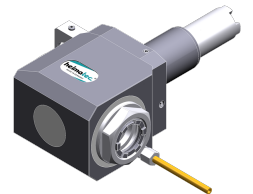
Illustrations similar.



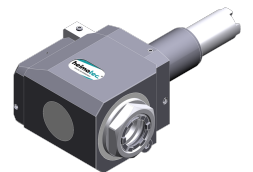
8 010 46 188



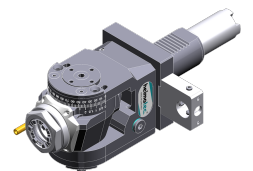
8 010 46 215



8 030 46 321



8 030 46 330



8 040 45 040

TOPSELLER -
many more available!

Static Tools

heimatec®

HAAS

ST-20/Y - VDI

| Part-# | Tool adaption | Coolant | Pressure max. |
|--|-------------------------|---------|---------------|
| Tool holder | | | |
| 8 210 45 002 | ER 25 | IC | -- |
| 8 210 46 000 | ER 32 | IC | -- |
| 8 210 47 001 | Ø 25 | IC/Ext | -- |
| 8 210 49 005 | Ø 50 | IC/Ext | -- |
| Boring bar holder | | | |
| 8 219 47 004 | Ø 25 | IC/Ext | -- |
| 8 219 48 006 | Ø 32 | IC/Ext | -- |
| Cut-off holder, height adjustable | | | |
| 8 320 43 009 | Clampshaft SH 32 | IC/Ext | 70 bar |

Illustrations similar.



8 210 45 002



8 210 46 000



8 219 47 004



8 219 48 006



8 320 43 009