

SPINNER
TC 800-MC



High-tech from heimatec - heimatec - Tools and systems for productive turning and milling

heimatec belongs to the international technology and quality leaders for precision tools and specializes in the development and production of high-precision static and live tools for all CNC lathes, CNC turn-/mill machines and CNC machining centers.

The range of products* spans from static BMT and VDI tool holders, live tools up to highly complex customer-specific individual solutions. heimatec, headquartered in Renchen, has a own subsidiary in Asia and India and numerous representatives as well as trading partners all over the world.

*OUR PRODCUTS

Static tool holders

Live tool units

Precision tools

Tools for turning and machining centres

Tools for swiss type lathes

Tool changing and uick-change systems

Tool systems for gear production

Digital tool management

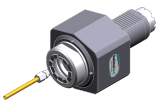
This catalogue, including all its parts, is protected by copyright. Any use outside the restricted limitations of the Copyright Act without the consent of heimatec is inadmissible and liable to prosecution. This applies in particular to duplication, translation, microfilming and storage and processing in electronic systems.

heimatec GmbH reserves the right to make technical changes at any time without giving prior notice. This applies in particular to adjustments at any time to meet new or changed international standards, or in case of further developments of our products or manufacturing processes.

The current version of our General Terms and Conditions can be found on our website.

SPINNER TC 800-MC

Part-#	Name	
8 010 56 033	Axial drilling and milling head ER 32 IC	
	Weight [kg]:	5.470
	Tool drive:	Coupling
	Shank size [mm]:	50.00
	Shank type:	VDI
	Tool adaption:	ER 32
	Gear ratio [i]:	1:1
	Torque max [Nm]:	80
	Rotation max [1/min]:	4000
	Rotating direction:	same
	Coolant:	IC/Ext
	Pressure max [bar]:	25
8 010 57 015	Axial drilling and milling head ER 40	
	Weight [kg]:	5.390
	Tool drive:	Coupling
	Shank size [mm]:	50.00
	Shank type:	VDI
	Tool adaption:	ER 40
	Gear ratio [i]:	1:1
	Torque max [Nm]:	80
	Rotation max [1/min]:	4000
	Rotating direction:	same
	Coolant:	EXT
8 010 57 036	Axial drilling and milling head ER 40 IC	
	Weight [kg]:	5.590
	Tool drive:	Coupling
	Shank size [mm]:	50.00
	Shank type:	VDI
	Tool adaption:	ER 40
	Gear ratio [i]:	1:1
	Torque max [Nm]:	80
	Rotation max [1/min]:	4000
	Rotating direction:	same
	Coolant:	IC/Ext
	Pressure max [bar]:	25
8 010 57 083	Axial drilling and milling head ER 40 AX UT	
	Weight [kg]:	5.120
	Tool drive:	Coupling
	Shank size [mm]:	50.00
	Shank type:	VDI
	Tool adaption:	ER 40 A - u-tec
	Gear ratio [i]:	1:1
	Torque max [Nm]:	80
	Rotation max [1/min]:	4000
	Rotating direction:	same
	Coolant:	EXT
8 010 57 084	Axial drilling and milling head ER 40 AX UT IC	
	Weight [kg]:	5.280
	Tool drive:	Coupling
	Shank size [mm]:	50.00
	Shank type:	VDI
	Tool adaption:	ER 40 u-tec
	Gear ratio [i]:	1:1



SPINNER

TC 800-MC

Part-#	Name	
	Torque max [Nm]:	80
	Rotation max [1/min]:	4000
	Rotating direction:	same
	Coolant:	IC/Ext
	Pressure max [bar]:	25
8 010 58 010	Axial drilling and milling head HT 6	
	Weight [kg]:	5.360
	Tool drive:	Coupling
	Shank size [mm]:	50.00
	Tool adaption:	HT 6
	Gear ratio [i]:	1:1
	Torque max [Nm]:	80
	Rotation max [1/min]:	4000
	Rotating direction:	same
	Coolant:	EXT
8 010 58 011	Axial drilling and milling head HT 6 IC	
	Weight [kg]:	5.570
	Tool drive:	Coupling
	Shank size [mm]:	50.00
	Shank type:	VDI
	Tool adaption:	HT 6
	Gear ratio [i]:	1:1
	Torque max [Nm]:	80
	Rotation max [1/min]:	4000
	Rotating direction:	same
	Coolant:	IC/Ext
	Pressure max [bar]:	25
8 011 55 011	Axial milling head universal arbor 22	
	Weight [kg]:	5.350
	Tool drive:	Coupling
	Shank size [mm]:	50.00
	Shank type:	VDI
	Tool adaption:	Universal arbor 22
	Gear ratio [i]:	1:1
	Torque max [Nm]:	80
	Rotation max [1/min]:	4000
	Rotating direction:	same
	Coolant:	EXT
8 011 56 006	Axial milling head universal arbor 27	
	Weight [kg]:	7.120
	Tool drive:	Coupling
	Shank size [mm]:	50.00
	Shank type:	VDI
	Tool adaption:	Universal arbor 27
	Gear ratio [i]:	1:1
	Torque max [Nm]:	80
	Rotation max [1/min]:	3000
	Rotating direction:	same
	Coolant:	EXT
	Please note:	Taper roller bearings

Part-#	Name	
8 013 54 021	Axial drilling and milling head ER 16 AX UT	
	Weight [kg]:	3.520
	Tool drive:	Coupling
	Shank size [mm]:	50.00
	Shank type:	VDI
	Tool adaption:	ER 16 A - u-tec
	Gear ratio [i]:	1:4
	Torque max [Nm]:	5
	Rotation max [1/min]:	24000
	Rotating direction:	same
	Coolant:	EXT
	Please note:	round housing ø 98
8 019 55 043	Axial drilling and milling head ER 25 AX UT	
	Weight [kg]:	8.360
	Notation:	offset
	Version:	right
	Tool drive:	Coupling
	Shank size [mm]:	50.00
	Shank type:	VDI
	Tool adaption:	ER 25 A - u-tec
	Gear ratio [i]:	1:3
	Torque max [Nm]:	16
	Rotation max [1/min]:	15000
	Rotating direction:	opposite
	Coolant:	EXT
	Please note:	stronger bearing
	Offset [mm]:	50
8 019 56 013	Axial drilling and milling head ER 32 IC	
	Weight [kg]:	8.580
	Notation:	offset
	Version:	right
	Tool drive:	Coupling
	Shank size [mm]:	50.00
	Shank type:	VDI
	Tool adaption:	ER 32
	Gear ratio [i]:	1:2
	Torque max [Nm]:	40
	Rotation max [1/min]:	12000
	Rotating direction:	opposite
	Coolant:	IC/Ext
	Pressure max [bar]:	140
	Offset [mm]:	50
8 019 56 015	Axial drilling and milling head ER 32	
	Notation:	offset
	Version:	left; special
	Tool drive:	Coupling
	Shank size [mm]:	50.00
	Shank type:	VDI
	Tool adaption:	ER 32
	Gear ratio [i]:	2:1
	Torque max [Nm]:	80
	Rotation max [1/min]:	3000
	Rotating direction:	opposite
	Coolant:	EXT
	Please note:	stronger bearing

Part-#	Name	
	Offset [mm]:	50
8 019 57 073	Axial drilling and milling head ER 40	
	Weight [kg]:	14.160
	Notation:	offset
	Version:	right
	Tool drive:	Coupling
	Shank size [mm]:	50.00
	Shank type:	VDI
	Tool adaption:	ER 40 A - u-tec
	Gear ratio [i]:	1:1
	Torque max [Nm]:	100
	Rotation max [1/min]:	6000
	Rotating direction:	opposite
	Coolant:	EXT
	Offset [mm]:	75
8 030 56 009	Radial drilling and milling head ER 32	
	Weight [kg]:	5.920
	Tool drive:	Coupling
	Shank size [mm]:	50.00
	Shank type:	VDI
	Tool adaption:	ER 32
	Gear ratio [i]:	1:1
	Torque max [Nm]:	50
	Rotation max [1/min]:	5000
	Rotating direction:	opposite
	Coolant:	EXT
	Center distance [mm]:	69
8 030 56 028	Radial drilling and milling head ER 32 IC	
	Version:	right
	Tool drive:	Coupling
	Shank size [mm]:	50.00
	Shank type:	VDI
	Tool adaption:	ER 32
	Gear ratio [i]:	1:1
	Torque max [Nm]:	50
	Rotation max [1/min]:	5000
	Rotating direction:	opposite
	Coolant:	IC/Ext
	Pressure max [bar]:	140
	Center distance [mm]:	69
8 030 57 013	Radial drilling and milling head ER 40	
	Weight [kg]:	6.060
	Tool drive:	Coupling
	Shank size [mm]:	50.00
	Shank type:	VDI
	Tool adaption:	ER 40
	Gear ratio [i]:	1:1
	Torque max [Nm]:	50
	Rotation max [1/min]:	6000
	Rotating direction:	opposite
	Coolant:	EXT
	Center distance [mm]:	69

SPINNER TC 800-MC

Part-#	Name
--------	------

8 030 57 048 Radial drilling and milling head ER 40 IC

Weight [kg]:	6.670
Version:	right
Tool drive:	Coupling
Shank size [mm]:	50.00
Shank type:	VDI
Tool adaption:	ER 40
Gear ratio [i]:	1:1
Torque max [Nm]:	50
Rotation max [1/min]:	6000
Rotating direction:	opposite
Coolant:	IC/Ext
Pressure max [bar]:	140
Center distance [mm]:	69

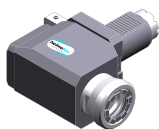
8 030 57 097 Radial drilling and milling head ER 40

Tool drive:	Coupling
Shank size [mm]:	50.00
Shank type:	VDI
Tool adaption:	ER 40
Gear ratio [i]:	1:2
Torque max [Nm]:	16
Rotation max [1/min]:	12000
Rotating direction:	opposite
Coolant:	EXT
Please note:	stronger bearing
Center distance [mm]:	69

8 030 57 100 Radial drilling and milling head ER 40 AX UT

Weight [kg]:	6.800
Tool drive:	Coupling
Shank size [mm]:	50.00
Shank type:	VDI
Tool adaption:	ER 40 A - u-tec
Gear ratio [i]:	1:1
Torque max [Nm]:	50
Rotation max [1/min]:	6000
Rotating direction:	opposite
Coolant:	EXT
Center distance [mm]:	69

8 030 57 105 Radial drilling and milling head ER 40 AX UT IC

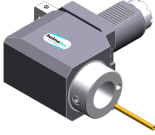


Weight [kg]:	7.300
Tool drive:	Coupling
Shank size [mm]:	50.00
Shank type:	VDI
Tool adaption:	ER 40 A - u-tec
Gear ratio [i]:	1:1
Torque max [Nm]:	50
Rotation max [1/min]:	6000
Rotating direction:	opposite
Coolant:	IC/Ext
Pressure max [bar]:	140
Center distance [mm]:	69

SPINNER TC 800-MC

Part-#	Name
--------	------

8 030 58 019	Radial drilling and milling head HT 6 IC	
Version:		right
Tool drive:		Coupling
Shank size [mm]:		50.00
Shank type:		VDI
Tool adaption:		HT 6
Gear ratio [i]:		1:1
Torque max [Nm]:		50
Rotation max [1/min]:		6000
Rotating direction:		opposite
Coolant:		IC/Ext
Pressure max [bar]:		25
Please note:		stronger bearing
Center distance [mm]:		69

8 030 58 020	Radial drilling and milling head HT 6	
	Weight [kg]:	7.140
	Version:	right
	Tool drive:	Coupling
	Shank size [mm]:	50.00
	Shank type:	VDI
	Tool adaption:	HT 6
	Gear ratio [i]:	1:1
	Torque max [Nm]:	50
	Rotation max [1/min]:	5000
	Rotating direction:	opposite
	Coolant:	EXT
	Please note:	stronger bearing
	Center distance [mm]:	69

8 033 57 006	Radial drilling and milling head ER 40	
	Weight [kg]:	9.730
	Notation:	offset
	Version:	right
	Tool drive:	Coupling
	Shank size [mm]:	50.00
	Shank type:	VDI
	Tool adaption:	ER 40
	Gear ratio [i]:	1:1
	Torque max [Nm]:	50
	Rotation max [1/min]:	6000
	Rotating direction:	same
	Coolant:	EXT
	Center distance [mm]:	110

8 033 57 011	Radial drilling and milling head ER 40	
	Weight [kg]:	10.320
	Notation:	offset
	Version:	right
	Tool drive:	Coupling
	Shank size [mm]:	50.00
	Shank type:	VDI
	Tool adaption:	ER 40
	Gear ratio [i]:	1:1
	Torque max [Nm]:	50
	Rotation max [1/min]:	6000
	Rotating direction:	same
	Coolant:	EXT

SPINNER

TC 800-MC

Part-#	Name	
	Please note:	stronger bearing
	Center distance [mm]:	110
8 033 57 013	Radial drilling and milling head ER 40 IC	
	Weight [kg]:	10.280
	Notation:	offset
	Version:	right
	Tool drive:	Coupling
	Shank size [mm]:	50.00
	Shank type:	VDI
	Tool adaption:	ER 40
	Gear ratio [i]:	1:1
	Torque max [Nm]:	50
	Rotation max [1/min]:	6000
	Rotating direction:	same
	Coolant:	IC/Ext
	Pressure max [bar]:	25
	Center distance [mm]:	110
8 033 57 025	Radial drilling and milling head ER 40	
	Weight [kg]:	9.700
	Notation:	offset
	Version:	right
	Tool drive:	Coupling
	Shank size [mm]:	50.00
	Shank type:	VDI
	Tool adaption:	ER 40
	Gear ratio [i]:	2:1
	Torque max [Nm]:	63
	Rotation max [1/min]:	3000
	Rotating direction:	same
	Coolant:	EXT
	Center distance [mm]:	110
8 033 58 000	Radial drilling and milling head HT 6	
	Weight [kg]:	10.340
	Notation:	offset
	Version:	right
	Tool drive:	Coupling
	Shank size [mm]:	50.00
	Shank type:	VDI
	Tool adaption:	HT 6
	Gear ratio [i]:	1:1
	Torque max [Nm]:	50
	Rotation max [1/min]:	4000
	Rotating direction:	same
	Coolant:	EXT
	Please note:	stronger bearing
	Center distance [mm]:	110
8 033 58 014	Radial drilling and milling head HT 6 IC	
	Weight [kg]:	10.930
	Notation:	offset
	Version:	right
	Tool drive:	Coupling
	Shank size [mm]:	50.00
	Shank type:	VDI
	Tool adaption:	HT 6

SPINNER

TC 800-MC

Part-#	Name	
	Gear ratio [i]:	1:1
	Torque max [Nm]:	50
	Rotation max [1/min]:	4000
	Rotating direction:	same
	Coolant:	IC/Ext
	Pressure max [bar]:	140
	Please note:	stronger bearing
	Center distance [mm]:	110
8 039 52 002	Radial drilling and milling head Weldon 6	
	Weight [kg]:	7.100
	Version:	left
	Tool drive:	Coupling
	Shank size [mm]:	50.00
	Shank type:	VDI
	Tool adaption:	Weldon (DIN 1835 b) 6 special
	Gear ratio [i]:	1:1
	Torque max [Nm]:	10
	Rotation max [1/min]:	6000
	Rotating direction:	opposite
	Coolant:	EXT
	Please note:	Special version
	Center distance [mm]:	185
8 040 56 007	Universal head ± 90° adjustable ER 32	
	Weight [kg]:	14.880
	Tool drive:	Coupling
	Shank size [mm]:	50.00
	Shank type:	VDI
	Tool adaption:	ER 32
	Gear ratio [i]:	1:1
	Torque max [Nm]:	50
	Rotation max [1/min]:	6000
	Rotating direction:	same
	Coolant:	EXT
	Center distance [mm]:	123
8 200 51 002	Tool holder A2-50x135	
	Weight [kg]:	9.200
	Shank size [mm]:	50.00
	Shank type:	VDI
8 200 51 003	Tool holder A2-50x220	
	Weight [kg]:	14.240
	Shank size [mm]:	50.00
	Shank type:	VDI
8 200 51 004	Tool holder A2-50x400	
	Weight [kg]:	24.700
	Shank size [mm]:	50.00
	Shank type:	VDI
8 200 51 005	Plug Z2-50 S	
	Weight [kg]:	2.260
	Shank size [mm]:	50.00
	Shank type:	VDI

SPINNER

TC 800-MC

Part-#	Name	
8 200 51 006	Plug Z2-50 K	
	Weight [kg]:	0.200
	Shank size [mm]:	50.00
	Shank type:	VDI
8 200 55 000	Tool holder A1-50x125	
	Weight [kg]:	19.800
	Shank size [mm]:	50.00
	Shank type:	VDI
8 208 59 002	Test mandrel VDI 50x40x200	
	Weight [kg]:	3.860
	Shank size [mm]:	50.00
	Shank type:	VDI
8 210 52 000	Tool holder F 50-MK 2	
	Shank size [mm]:	50.00
	Shank type:	VDI
	Tool adaption:	DIN 228 D - MK 2
	Coolant:	IC
8 210 53 000	Tool holder F 50-MK 3	
	Weight [kg]:	2.700
	Shank size [mm]:	50.00
	Shank type:	VDI
	Tool adaption:	DIN 228 D - MK 3
	Coolant:	IC
8 210 53 001	Tool holder E2-50x 8	
	Shank size [mm]:	50.00
	Shank type:	VDI
	Tool adaption:	Ø 8
	Coolant:	IC/Ext
8 210 54 000	Tool holder E1-50x10	
	Shank size [mm]:	50.00
	Shank type:	VDI
	Tool adaption:	Ø 10
	Coolant:	IC
8 210 54 001	Tool holder E1-50x12	
	Shank size [mm]:	50.00
	Shank type:	VDI
	Tool adaption:	Ø 12
	Coolant:	IC
8 210 54 002	Tool holder E2-50x12	
	Shank size [mm]:	50.00
	Shank type:	VDI
	Tool adaption:	Ø 12
	Coolant:	IC/Ext

SPINNER

TC 800-MC

Part-#	Name	
8 210 54 003	Tool holder F 50-MK 4	
	Weight [kg]:	2.760
	Shank size [mm]:	50.00
	Shank type:	VDI
	Tool adaption:	DIN 228 D - MK 4
	Coolant:	IC
8 210 54 004	Short drill chuck VDI 50x13	
	Shank size [mm]:	50.00
	Shank type:	VDI
	Coolant:	EXT
8 210 54 005	Short drill chuck VDI 50x13 - IC	
	Weight [kg]:	2.920
	Shank size [mm]:	50.00
	Shank type:	VDI
	Coolant:	IC
8 210 54 006	Tool holder E2-50x10	
	Shank size [mm]:	50.00
	Shank type:	VDI
	Tool adaption:	Ø 10
	Coolant:	IC/Ext
8 210 55 000	Tool holder E1-50x16	
	Shank size [mm]:	50.00
	Shank type:	VDI
	Tool adaption:	Ø 16
	Coolant:	IC
8 210 55 001	Tool holder E2-50x16	
	Shank size [mm]:	50.00
	Shank type:	VDI
	Tool adaption:	Ø 16
	Coolant:	IC/Ext
8 210 55 002	Tool holder F 50-MK 5	
	Weight [kg]:	8.320
	Shank size [mm]:	50.00
	Shank type:	VDI
	Tool adaption:	DIN 228 D - MK 5
	Coolant:	IC
8 210 55 004	Short drill chuck VDI 50x16 - IC	
	Weight [kg]:	3.120
	Shank size [mm]:	50.00
	Shank type:	VDI
	Coolant:	IC
8 210 56 000	Tool holder E1-50x20	
	Shank size [mm]:	50.00
	Shank type:	VDI
	Tool adaption:	Ø 20
	Coolant:	IC

SPINNER

TC 800-MC

Part-#	Name	
8 210 56 001	Tool holder E2-50x20	
	Shank size [mm]:	50.00
	Shank type:	VDI
	Tool adaption:	Ø 20
	Coolant:	IC/Ext
8 210 57 000	Tool holder E2-50x25	
	Shank size [mm]:	50.00
	Shank type:	VDI
	Tool adaption:	Ø 25
	Coolant:	IC/Ext
8 210 57 001	Tool holder E1-50x25	
	Shank size [mm]:	50.00
	Shank type:	VDI
	Tool adaption:	Ø 25
	Coolant:	IC
8 210 57 002	Tool holder E3-50x C 25	
	Weight [kg]:	3.180
	Shank size [mm]:	50.00
	Shank type:	VDI
	Tool adaption:	DIN 6388 - C 25
	Coolant:	IC
8 210 57 003	Tool holder E4-50xER 40	
	Shank size [mm]:	50.00
	Shank type:	VDI
	Tool adaption:	ER 40
	Coolant:	IC
8 210 58 000	Tool holder E1-50x32	
	Shank size [mm]:	50.00
	Shank type:	VDI
	Tool adaption:	Ø 32
	Coolant:	IC
8 210 58 001	Tool holder E2-50x32	
	Shank size [mm]:	50.00
	Shank type:	VDI
	Tool adaption:	Ø 32
	Coolant:	IC/Ext
8 210 58 002	Tool holder E3-50x C 32	
	Weight [kg]:	3.620
	Shank size [mm]:	50.00
	Shank type:	VDI
	Tool adaption:	DIN 6388 - C 32
	Coolant:	IC
8 210 59 001	Tool holder E2-50x50	
	Shank size [mm]:	50.00
	Shank type:	VDI
	Tool adaption:	Ø 50
	Coolant:	IC/Ext

SPINNER

TC 800-MC

Part-#	Name	
8 210 59 002	Tool holder E1-50x40	
	Shank size [mm]:	50.00
	Shank type:	VDI
	Tool adaption:	Ø 40
	Coolant:	IC
8 210 59 003	Tool holder E1-50x50	
	Shank size [mm]:	50.00
	Shank type:	VDI
	Tool adaption:	Ø 50
	Coolant:	IC
8 210 59 004	Tool holder E2-50x40	
	Shank size [mm]:	50.00
	Shank type:	VDI
	Tool adaption:	Ø 40
	Coolant:	IC/Ext
8 210 59 005	Tool holder E1-50x44 - special	
	Shank size [mm]:	50.00
	Shank type:	VDI
	Tool adaption:	Ø 44
	Coolant:	IC
	Please note:	Special version
8 210 59 006	Tool holder E1-50x63 - special	
	Shank size [mm]:	50.00
	Shank type:	VDI
	Tool adaption:	Ø 63
	Coolant:	IC
	Please note:	Special version
8 214 54 000	Tool holder C1-50x32	
	Weight [kg]:	5.660
	Shank size [mm]:	50.00
	Shank type:	VDI
	Tool adaption:	Sq. 32/25
	Coolant:	EXT
8 214 54 001	Tool holder C3-50x32	
	Weight [kg]:	6.080
	Shank size [mm]:	50.00
	Shank type:	VDI
	Tool adaption:	Sq. 32/25
	Coolant:	EXT
8 234 54 000	Tool holder B1-50x32x55	
	Shank size [mm]:	50.00
	Shank type:	VDI
	Tool adaption:	Sq. 32/25
	Coolant:	EXT

SPINNER TC 800-MC

Part-#	Name	
8 234 54 001	Tool holder B3-50x32x55	
	Weight [kg]:	4.420
	Shank size [mm]:	50.00
	Shank type:	VDI
	Tool adaption:	Sq. 32/25
	Coolant:	EXT
8 234 54 002	Tool holder B5-50x32x55	
	Weight [kg]:	5.220
	Shank size [mm]:	50.00
	Shank type:	VDI
	Tool adaption:	Sq. 32/25
	Coolant:	EXT
8 234 54 003	Tool holder B7-50x32x55	
	Weight [kg]:	5.640
	Shank size [mm]:	50.00
	Shank type:	VDI
	Tool adaption:	Sq. 32/25
	Coolant:	EXT
8 240 39 011	Boring bar holder Ø 50	
	Weight [kg]:	4.180
	Shank type:	BMT
	Machine adaption:	Centering key slot b 32
	Tool adaption:	Ø 50
	Coolant:	IC/Ext
	Center distance [mm]:	35
8 240 39 013	Boring bar holder Ø 40	
	Weight [kg]:	4.800
	Shank type:	BMT
	Machine adaption:	Centering key slot b 32
	Tool adaption:	Ø 40
	Coolant:	IC/Ext
	Center distance [mm]:	35
8 320 53 004	Cut-off holder, height adjustable SH 32 IC	
	Version:	universal
	Shank size [mm]:	50.00
	Shank type:	VDI
	Tool adaption:	Clampshaft SH 32
	Coolant:	IC/Ext
	Pressure max [bar]:	70



● heimatec overseas branches

○ global representations of heimatec

heimatec[®]

heimatec GmbH
Präzisionswerkzeuge
Carl-Benz-Str. 4
77871 Renchen
Germany

T +49 7843 9466 0
www.heimatec.com
info@heimatec.com

Please find the contact details of our worldwide trading partners on our website:
<https://heimatec.com/business-partners>