

HAAS
ST-25/Y - BMT
65



High-tech from heimatec - heimatec - Tools and systems for productive turning and milling

heimatec belongs to the international technology and quality leaders for precision tools and specializes in the development and production of high-precision static and live tools for all CNC lathes, CNC turn-/mill machines and CNC machining centers.

The range of products* spans from static BMT and VDI tool holders, live tools up to highly complex customer-specific individual solutions. heimatec, headquartered in Renchen, has a own subsidiary in Asia and India and numerous representatives as well as trading partners all over the world.

*OUR PRODCUTS

Static tool holders

Live tool units

Precision tools

Tools for turning and machining centres

Tools for swiss type lathes

Tool changing and uick-change systems

Tool systems for gear production

Digital tool management

This catalogue, including all its parts, is protected by copyright. Any use outside the restricted limitations of the Copyright Act without the consent of heimatec is inadmissible and liable to prosecution. This applies in particular to duplication, translation, microfilming and storage and processing in electronic systems.

heimatec GmbH reserves the right to make technical changes at any time without giving prior notice. This applies in particular to adjustments at any time to meet new or changed international standards, or in case of further developments of our products or manufacturing processes.

The current version of our General Terms and Conditions can be found on our website.

Part-#

Name

8 010 66 132**Axial drilling and milling head ER 32 AS UT**

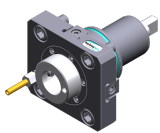
Weight [kg]:	3.340
Tool drive:	Flat (~DIN 1809)
Shank size [mm]:	65.00
Shank type:	BMT
Tool adaption:	ER 32 A - u-tec
Gear ratio [i]:	1:1
Torque max [Nm]:	50
Rotation max [1/min]:	6000
Rotating direction:	same
Coolant:	EXT
Please note:	short version

8 010 66 143**Axial drilling and milling head ER 32 AX UT IC**

Notation:	180° reversible
Tool drive:	Flat (~DIN 1809)
Shank size [mm]:	65.00
Shank type:	BMT
Tool adaption:	ER 32 A - u-tec
Gear ratio [i]:	1:1
Torque max [Nm]:	70
Rotation max [1/min]:	12000
Rotating direction:	same
Coolant:	IC/Ext
Pressure max [bar]:	100
Please note:	Dryrun possible

8 010 66 145**Axial drilling and milling head ER 32 AX UT**

Notation:	180° reversible
Tool drive:	Flat (~DIN 1809)
Shank size [mm]:	65.00
Shank type:	BMT
Tool adaption:	ER 32 A - u-tec
Gear ratio [i]:	1:1
Torque max [Nm]:	70
Rotation max [1/min]:	12000
Rotating direction:	same
Coolant:	EXT
Pressure max [bar]:	140

8 010 67 025**Axial drilling and milling head HT 5**

Weight [kg]:	3.065
Tool drive:	Flat (~DIN 1809)
Shank size [mm]:	65.00
Shank type:	BMT
Tool adaption:	HT 5
Gear ratio [i]:	1:1
Torque max [Nm]:	50
Rotation max [1/min]:	6000
Rotating direction:	same
Coolant:	EXT

Part-#

Name

8 010 67 026**Axial drilling and milling head HT 5 IC**

Weight [kg]:	3.210
Tool drive:	Flat (~DIN 1809)
Shank size [mm]:	65.00
Shank type:	BMT
Tool adaption:	HT 5
Gear ratio [i]:	1:1
Torque max [Nm]:	50
Rotation max [1/min]:	6000
Rotating direction:	same
Coolant:	IC/Ext
Pressure max [bar]:	25

8 010 67 132**Axial drilling and milling head ER 40 AX UT**


Weight [kg]:	4.870
Tool drive:	Flat (~DIN 1809)
Shank size [mm]:	65.00
Shank type:	BMT
Tool adaption:	ER 40 A - u-tec
Gear ratio [i]:	1:1
Torque max [Nm]:	50
Rotation max [1/min]:	5000
Rotating direction:	same
Coolant:	EXT
Please note:	Combi bearing

8 013 64 008**Axial drilling and milling head ER 16 AX UT**

Weight [kg]:	4.050
Tool drive:	Flat (~DIN 1809)
Shank size [mm]:	65.00
Shank type:	BMT
Tool adaption:	ER 16 A - u-tec
Gear ratio [i]:	1:4
Torque max [Nm]:	5
Rotation max [1/min]:	24000
Rotating direction:	same
Coolant:	EXT

8 013 64 009**Axial drilling and milling head ER 16 AX UT IC**

Tool drive:	Flat (~DIN 1809)
Shank size [mm]:	65.00
Shank type:	BMT
Tool adaption:	ER 16 A - u-tec
Gear ratio [i]:	1:4
Torque max [Nm]:	5
Rotation max [1/min]:	24000
Rotating direction:	same
Coolant:	IC/Ext
Pressure max [bar]:	100

Part-#	Name	
8 019 65 065	Axial drilling and milling head ER 25 AX UT	
	Weight [kg]:	6.330
	Notation:	offset; 180° reversible
	Tool drive:	Flat (~DIN 1809)
	Shank size [mm]:	65.00
	Shank type:	BMT
	Tool adaption:	ER 25 A - u-tec
	Gear ratio [i]:	1:2
	Torque max [Nm]:	40
	Rotation max [1/min]:	12000
	Rotating direction:	opposite
	Coolant:	EXT
	Please note:	stronger bearing
	Offset [mm]:	50
8 019 65 066	Axial drilling and milling head ER 25 AX UT IC	
	Weight [kg]:	7.820
	Notation:	offset; 180° reversible
	Tool drive:	Flat (~DIN 1809)
	Shank size [mm]:	65.00
	Shank type:	BMT
	Tool adaption:	ER 25 A - u-tec
	Gear ratio [i]:	1:2
	Torque max [Nm]:	40
	Rotation max [1/min]:	12000
	Rotating direction:	opposite
	Coolant:	IC/Ext
	Pressure max [bar]:	140
	Please note:	stronger bearing
	Offset [mm]:	50
8 019 65 067	Axial drilling and milling head ER 25 AX UT	
	Weight [kg]:	6.030
	Notation:	offset; 180° reversible
	Tool drive:	Flat (~DIN 1809)
	Shank size [mm]:	65.00
	Shank type:	BMT
	Tool adaption:	ER 25 A - u-tec
	Gear ratio [i]:	1:1
	Torque max [Nm]:	50
	Rotation max [1/min]:	6000
	Rotating direction:	opposite
	Coolant:	EXT
	Please note:	stronger bearing
	Offset [mm]:	50
8 019 65 068	Axial drilling and milling head ER 25 AX UT IC	
	Weight [kg]:	7.810
	Notation:	offset; 180° reversible
	Tool drive:	Flat (~DIN 1809)
	Shank size [mm]:	65.00
	Shank type:	BMT
	Tool adaption:	ER 25 A - u-tec
	Gear ratio [i]:	1:1
	Torque max [Nm]:	50
	Rotation max [1/min]:	6000
	Rotating direction:	opposite
	Coolant:	IC/Ext

Part-#	Name	
	Pressure max [bar]:	140
	Please note:	stronger bearing
	Offset [mm]:	50
8 019 65 069	Axial drilling and milling head ER 25 AX UT	
	Weight [kg]:	6.380
	Notation:	offset; 180° reversible
	Tool drive:	Flat (~DIN 1809)
	Shank size [mm]:	65.00
	Shank type:	BMT
	Tool adaption:	ER 25 A - u-tec
	Gear ratio [i]:	1:3
	Torque max [Nm]:	12
	Rotation max [1/min]:	15000
	Rotating direction:	opposite
	Coolant:	EXT
	Please note:	stronger bearing
	Offset [mm]:	50
8 019 65 070	Axial drilling and milling head ER 25 AX UT IC	
	Notation:	offset; 180° reversible
	Tool drive:	Flat (~DIN 1809)
	Shank size [mm]:	65.00
	Shank type:	BMT
	Tool adaption:	ER 25 A - u-tec
	Gear ratio [i]:	1:3
	Torque max [Nm]:	12
	Rotation max [1/min]:	15000
	Rotating direction:	opposite
	Coolant:	IC/Ext
	Pressure max [bar]:	140
	Please note:	stronger bearing
	Offset [mm]:	50
8 019 65 072	Axial drilling and milling head ER 25 AX UT IC	
	Weight [kg]:	9.180
	Notation:	offset; 180° reversible
	Tool drive:	Flat (~DIN 1809)
	Shank size [mm]:	65.00
	Shank type:	BMT
	Tool adaption:	ER 25 A - u-tec
	Gear ratio [i]:	2:1
	Torque max [Nm]:	80
	Rotation max [1/min]:	3000
	Rotating direction:	opposite
	Coolant:	IC/Ext
	Pressure max [bar]:	140
	Please note:	stronger bearing
	Offset [mm]:	50
8 019 66 014	Axial drilling and milling head ER 32 AX UT IC	
	Weight [kg]:	10.740
	Notation:	offset;
	Tool drive:	Flat (~DIN 1809)
	Shank size [mm]:	65.00
	Shank type:	BMT
	Tool adaption:	ER 32 A - u-tec

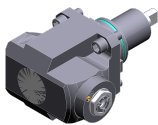


Part-#

Name

Gear ratio [i]:	1:1
Torque max [Nm]:	100
Rotation max [1/min]:	6000
Rotating direction:	opposite
Coolant:	IC/Ext
Pressure max [bar]:	140
Please note:	stronger bearing
Offset [mm]:	75

8 030 64 021

Radial drilling and milling head ER 16 AX UT

Weight [kg]:	8.030
Notation:	180° reversible
Tool drive:	Flat (~DIN 1809)
Shank size [mm]:	65.00
Shank type:	BMT
Tool adaption:	ER 16 A - u-tec
Gear ratio [i]:	1:4
Torque max [Nm]:	5
Rotation max [1/min]:	24000
Rotating direction:	opposite
Coolant:	EXT
Center distance [mm]:	72

8 030 64 023

Radial drilling and milling head ER 16 AX UT IC

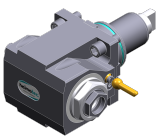
Weight [kg]:	8.540
Notation:	180° reversible
Tool drive:	Flat (~DIN 1809)
Shank size [mm]:	65.00
Shank type:	BMT
Tool adaption:	ER 16 A - u-tec
Gear ratio [i]:	1:4
Torque max [Nm]:	5
Rotation max [1/min]:	24000
Rotating direction:	opposite
Coolant:	IC/Ext
Pressure max [bar]:	140
Center distance [mm]:	72

8 030 65 045

Radial drilling and milling head ER 25 AX UT IC


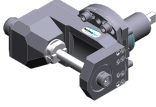
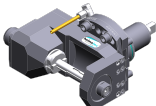
Weight [kg]:	7.200
Notation:	180° reversible
Tool drive:	Flat (~DIN 1809)
Shank size [mm]:	65.00
Shank type:	BMT
Tool adaption:	ER 25 A - u-tec
Gear ratio [i]:	1:3
Torque max [Nm]:	12
Rotation max [1/min]:	18000
Rotating direction:	same
Coolant:	IC/Ext
Pressure max [bar]:	140
Please note:	stronger bearing
Center distance [mm]:	80

Part-#	Name	
8 030 65 095	Radial drilling and milling head ER 25 AS UT	
	Weight [kg]:	7.730
	Notation:	180° reversible
	Tool drive:	Flat (~DIN 1809)
	Shank size [mm]:	65.00
	Shank type:	BMT
	Tool adaption:	ER 25 A - u-tec
	Gear ratio [i]:	1:1
	Torque max [Nm]:	70
	Rotation max [1/min]:	10000
	Rotating direction:	same
	Coolant:	EXT
	Center distance [mm]:	72
8 030 65 097	Radial drilling and milling head ER 25 AS UT IC	
	Weight [kg]:	8.550
	Notation:	180° reversible
	Tool drive:	Flat (~DIN 1809)
	Shank size [mm]:	65.00
	Shank type:	BMT
	Tool adaption:	ER 25 A - u-tec
	Gear ratio [i]:	1:1
	Torque max [Nm]:	70
	Rotation max [1/min]:	10000
	Rotating direction:	same
	Coolant:	IC/Ext
	Pressure max [bar]:	140
	Center distance [mm]:	72
8 030 66 123	Radial drilling and milling head ER 32 AS UT IC	
	Weight [kg]:	8.450
	Notation:	180° reversible
	Tool drive:	Flat (~DIN 1809)
	Shank size [mm]:	65.00
	Shank type:	BMT
	Tool adaption:	ER 32 A - u-tec
	Gear ratio [i]:	1:1
	Torque max [Nm]:	70
	Rotation max [1/min]:	6000
	Rotating direction:	same
	Coolant:	IC/Ext
	Pressure max [bar]:	140
	Please note:	stronger bearing
	Center distance [mm]:	72
8 030 66 155	Radial drilling and milling head ER 32 AS UT	
	Notation:	180° reversible
	Tool drive:	Flat (~DIN 1809)
	Shank size [mm]:	65.00
	Shank type:	BMT
	Tool adaption:	ER 32 A - u-tec
	Gear ratio [i]:	2:1
	Torque max [Nm]:	80
	Rotation max [1/min]:	3000
	Rotating direction:	opposite
	Coolant:	EXT
	Center distance [mm]:	72



Part-#	Name	
8 030 66 158	Radial drilling and milling head ER 32 AS UT IC	
	Weight [kg]:	9.150
	Notation:	180° reversible
	Tool drive:	Flat (~DIN 1809)
	Shank size [mm]:	65.00
	Shank type:	BMT
	Tool adaption:	ER 32 A - u-tec
	Gear ratio [i]:	2:1
	Torque max [Nm]:	63
	Rotation max [1/min]:	3000
	Rotating direction:	opposite
	Coolant:	IC/Ext
	Pressure max [bar]:	140
	Please note:	Rotating direction note; combi bearing
	Center distance [mm]:	72
8 030 66 224	Radial drilling and milling head C 4 IC	
	Weight [kg]:	10.070
	Notation:	180° reversible
	Tool drive:	Flat (~DIN 1809)
	Shank size [mm]:	65.00
	Shank type:	BMT
	Tool adaption:	heimatec Capto(TM) C 4
	Gear ratio [i]:	1:1
	Torque max [Nm]:	50
	Rotation max [1/min]:	6000
	Rotating direction:	opposite
	Coolant:	IC/Ext
	Pressure max [bar]:	140
	Please note:	Check applicability; note tool length!
	Center distance [mm]:	72
8 030 66 229	Radial drilling and milling head ER 32 IC	
	Weight [kg]:	8.630
	Notation:	180° reversible
	Tool drive:	Flat (~DIN 1809)
	Shank size [mm]:	65.00
	Shank type:	BMT
	Tool adaption:	ER 32
	Gear ratio [i]:	1:1
	Torque max [Nm]:	70
	Rotation max [1/min]:	6000
	Rotating direction:	same
	Coolant:	IC/Ext
	Pressure max [bar]:	140
	Center distance [mm]:	72
8 030 66 239	Radial drilling and milling head ER 32 AS UT	
	Weight [kg]:	8.200
	Notation:	180° reversible
	Tool drive:	Flat (~DIN 1809)
	Shank size [mm]:	65.00
	Shank type:	BMT
	Tool adaption:	ER 32 A - u-tec
	Gear ratio [i]:	1:1
	Torque max [Nm]:	70
	Rotation max [1/min]:	10000
	Rotating direction:	same

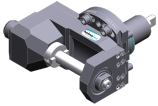


Part-#	Name	
	Coolant:	EXT
	Pressure max [bar]:	140
	Center distance [mm]:	72
8 030 66 243	Radial drilling and milling head ER 32 AS UT IC	
	Weight [kg]:	8.500
	Notation:	180° reversible
	Tool drive:	Flat (~DIN 1809)
	Shank size [mm]:	65.00
	Shank type:	BMT
	Tool adaption:	ER 32 A - u-tec
	Gear ratio [i]:	1:1
	Torque max [Nm]:	70
	Rotation max [1/min]:	10000
	Rotating direction:	same
	Coolant:	IC/Ext
	Pressure max [bar]:	140
	Center distance [mm]:	72
8 030 67 153	Radial drilling and milling head ER 40 AX UT	
	Weight [kg]:	8.260
	Notation:	180° reversible
	Tool drive:	Flat (~DIN 1809)
	Shank size [mm]:	65.00
	Shank type:	BMT
	Tool adaption:	ER 40 A - u-tec
	Gear ratio [i]:	1:1
	Torque max [Nm]:	70
	Rotation max [1/min]:	6000
	Rotating direction:	same
	Coolant:	EXT
	Please note:	stronger bearing
	Center distance [mm]:	72
8 037 64 039	Radial disk mill head arbor 16	
	Weight [kg]:	11.860
	Tool drive:	Flat (~DIN 1809)
	Shank size [mm]:	65.00
	Shank type:	BMT
	Tool adaption:	Arbor 16
	Gear ratio [i]:	2:1
	Torque max [Nm]:	63
	Rotation max [1/min]:	3000
	Rotating direction:	same
	Coolant:	no
	Please note:	strong version; stronger bearing; use
	Center distance [mm]:	87,5
8 037 64 040	Radial disk mill head arbor 16	
	Weight [kg]:	11.610
	Tool drive:	Flat (~DIN 1809)
	Shank size [mm]:	65.00
	Shank type:	BMT
	Tool adaption:	Arbor 16
	Gear ratio [i]:	2:1
	Torque max [Nm]:	63
	Rotation max [1/min]:	3000

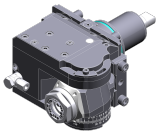
Part-#

Name

Rotating direction: same
 Coolant: EXT
 Please note: strong version; stronger bearing; use
 Center distance [mm]: 87,5

8 037 65 008**Radial disk mill head arbor 22**



Weight [kg]: 12.060
 Tool drive: Flat (~DIN 1809)
 Shank size [mm]: 65.00
 Shank type: BMT
 Tool adaption: Arbor 22
 Gear ratio [i]: 2:1
 Torque max [Nm]: 63
 Rotation max [1/min]: 3000
 Rotating direction: same
 Coolant: no
 Please note: strong version; stronger bearing; use
 Center distance [mm]: 87,5

8 043 65 000**Universal head +135°/-30° adj. ER25 AX UT**

Weight [kg]: 10.800
 Notation: offset; 180° reversible
 Tool drive: Flat (~DIN 1809)
 Shank size [mm]: 65.00
 Shank type: BMT
 Tool adaption: ER 25 A - u-tec
 Gear ratio [i]: 1:1
 Torque max [Nm]: 25
 Rotation max [1/min]: 6000
 Rotating direction: same
 Coolant: EXT
 Please note: stronger bearing; note tool length!
 Center distance [mm]: 69
 Offset [mm]: 60

8 043 65 004**Universal head +135°/-30° adj. ER25AX UTIK**

Weight [kg]: 10.080
 Notation: offset; 180° reversible
 Tool drive: Flat (~DIN 1809)
 Shank size [mm]: 65.00
 Shank type: BMT
 Tool adaption: ER 25 A - u-tec
 Gear ratio [i]: 1:1
 Torque max [Nm]: 25
 Rotation max [1/min]: 6000
 Rotating direction: same
 Coolant: IC/Ext
 Pressure max [bar]: 140
 Please note: stronger bearing
 Center distance [mm]: 69
 Offset [mm]: 60

Part-#	Name	
8 050 65 011	Multispindle drilling head ER 25 AX UT	
	Weight [kg]:	6.700
	Version:	2-spindles
	Tool drive:	Flat (~DIN 1809)
	Shank size [mm]:	65.00
	Shank type:	BMT
	Tool adaption:	ER 25 A - u-tec
	Gear ratio [i]:	1:1
	Torque max [Nm]:	32/Sp.
	Rotation max [1/min]:	6000
	Rotating direction:	opposite
	Coolant:	EXT
	Please note:	stronger bearing
8 050 65 012	Multispindle drilling head ER 25 AX UT IC	
	Weight [kg]:	6.740
	Tool drive:	Flat (~DIN 1809)
	Shank size [mm]:	65.00
	Shank type:	BMT
	Tool adaption:	ER 25 A - u-tec
	Gear ratio [i]:	1:1
	Torque max [Nm]:	32/Sp.
	Rotation max [1/min]:	6000
	Rotating direction:	opposite
	Coolant:	IC/Ext
	Pressure max [bar]:	25
	Please note:	stronger bearing
8 050 66 005	Multispindle drilling head C 4	
	Weight [kg]:	12.500
	Notation:	180° reversible
	Employment for:	Main- and sub spindle
	Version:	2-spindles
	Tool drive:	Flat (~DIN 1809)
	Shank size [mm]:	65.00
	Shank type:	BMT
	Tool adaption:	heimatec Capto(TM) C 4
	Gear ratio [i]:	1:1
	Torque max [Nm]:	50
	Rotation max [1/min]:	6000
	Rotating direction:	opposite
	Coolant:	EXT
	Please note:	Check applicability; tool length check !
	Offset [mm]:	62 62
8 053 65 019	Multispindle radial head ER 25 AX UT	
	Weight [kg]:	11.230
	Notation:	180° reversible
	Version:	2-spindles
	Tool drive:	Flat (~DIN 1809)
	Shank size [mm]:	65.00
	Shank type:	BMT
	Tool adaption:	ER 25 A - u-tec
	Gear ratio [i]:	1:1
	Torque max [Nm]:	32/Sp
	Rotation max [1/min]:	6000

Part-#

Name

Rotating direction: same
Coolant: EXT
Center distance [mm]: 72

8 053 65 022 Multispindle radial head ER 25 AXUT IC

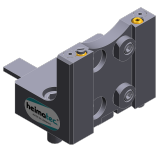
Weight [kg]: 12.050
Notation: 180° reversible
Version: 2-spindles
Tool drive: Flat (~DIN 1809)
Shank size [mm]: 65.00
Shank type: BMT
Tool adaption: ER 25 A - u-tec
Gear ratio [i]: 1:1
Torque max [Nm]: 32/Sp
Rotation max [1/min]: 6000
Rotating direction: same
Coolant: IC/Ext
Pressure max [bar]: 140
Center distance [mm]: 72

8 200 62 006 Cover plate 96,0x100,0x 10,0

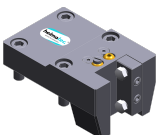
Weight [kg]: 1.340
Shank size [mm]: 65.00
Shank type: BMT

8 202 10 009 Basic holder longitudinal seat FN 12

Weight [kg]: 1.490
Notation: 180° reversible
Shank type: BMT
Machine adaption: Centering key b 18
Tool adaption: Interface FN 12
Coolant: EXT

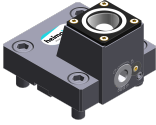

8 224 13 015 Cut-off holder SH 32


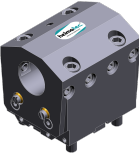
Weight [kg]: 1.870
Employment for: Cut-off tool 32
Version: Clampshaft on turret side
Shank type: BMT
Machine adaption: Centering key b 18
Tool adaption: Clampshaft SH 32
Coolant: EXT



8 224 15 005 Universal turning holder sq. 25

Weight [kg]: 3.960
Machine adaption: Centering key b 18
Tool adaption: Sq. 25
Coolant: EXT
Pressure max [bar]: 80

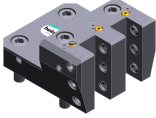
Part-#	Name	
8 224 15 006	Universal turning holder sq. 25	
	Weight [kg]:	4.590
	Notation:	180° reversible
	Machine adaption:	Centering key b 18
	Tool adaption:	Sq. 25
		Sq. 25
	Coolant:	EXT
	Pressure max [bar]:	80
8 224 15 016	Universal turning holder sq. 1"	
	Weight [kg]:	4.580
	Shank type:	BMT
	Machine adaption:	Centering key b 18
	Tool adaption:	Sq. 1" (25,4mm)
		Sq. 1" (25,4mm)
	Coolant:	EXT
8 224 15 049	Universal turning holder sq. 1"	
	Shank type:	BMT
	Machine adaption:	Centering key b 18
	Tool adaption:	Sq. 1" (25,4mm)
		Sq. 1" (25,4mm)
	Coolant:	EXT
8 224 15 052	Universal turning holder sq. 25 IC	
	Shank type:	BMT
	Machine adaption:	Centering key b 18
	Tool adaption:	Sq. 25
		Sq. 25
	Coolant:	IC/Ext
	Pressure max [bar]:	100
	Please note:	Key rail
8 224 15 053	Universal turning holder sq. 25 IC	
	Weight [kg]:	4.690
	Notation:	180° reversible
	Shank type:	BMT
	Machine adaption:	Centering key b 18
	Tool adaption:	Sq. 25
		Sq. 25
	Coolant:	IC/Ext
	Pressure max [bar]:	100
	Please note:	Key rail
8 224 15 056	Universal turning holder sq. 1" IC	
	Notation:	180° reversible
	Shank type:	BMT
	Machine adaption:	Centering key b 18
	Tool adaption:	Sq. 1" (25,4mm)
		Sq. 1" (25,4mm)
	Coolant:	IC/Ext
	Pressure max [bar]:	100
	Please note:	Key rail

Part-#	Name	
8 229 16 012	Tool holder C 4 IC	
		Weight [kg]: 3.300 Notation: 180° reversible Version: right Shank type: BMT Machine adaption: Centering key b 18 Tool adaption: heimatec Capto(TM) C 4 Coolant: IC Please note: Check applicability; note tool length! Offset [mm]: 31
8 240 16 036	Collet chuck holder ER 32	
		Weight [kg]: 7.370 Notation: 180° reversible Employment for: Main- and sub spindle Shank type: BMT Machine adaption: Centering key b 18 Tool adaption: ER 32 Coolant: IC/Ext Pressure max [bar]: 80 Center distance [mm]: 72
8 240 16 043	Tool holder C 4 IC	
		Weight [kg]: 7.320 Notation: 180° reversible Employment for: right cutting tools Shank type: BMT Machine adaption: Centering key b 18 Tool adaption: heimatec Capto(TM) C 4 Coolant: IC/Ext Center distance [mm]: 72
8 240 17 044	Boring bar holder Ø 25	
		Weight [kg]: 8.200 Notation: 180° reversible Employment for: Main- and sub spindle Shank type: BMT Machine adaption: Centering key b 18 Tool adaption: Ø 25 Coolant: IC/Ext Center distance [mm]: 72
8 240 17 054	Boring bar holder Ø 1 1/4"	
		Weight [kg]: 7.800 Notation: 180° reversible Employment for: Main- and sub spindle Shank type: BMT Machine adaption: Centering key b 18 Tool adaption: Ø 1 1/4" (31,75mm) Coolant: IC/Ext Center distance [mm]: 72

Part-#	Name	
8 240 17 059	Tool holder C 5 IC	
	Weight [kg]:	7.880
	Notation:	180° reversible
	Employment for:	right cutting tools
	Shank type:	BMT
	Machine adaption:	Centering key b 18
	Tool adaption:	heimatec Capto(TM) C 5
	Coolant:	IC/Ext
	Center distance [mm]:	72
8 240 17 076	Boring bar holder Ø 1"	
	Weight [kg]:	8.120
	Notation:	180° reversible
	Employment for:	Main- and sub spindle
	Shank type:	BMT
	Machine adaption:	Centering key b 18
	Tool adaption:	Ø 1" (25,4mm)
	Coolant:	IC/Ext
	Center distance [mm]:	72
8 240 17 091	Boring bar holder Ø 25 - slotted	
	Weight [kg]:	4.860
	Notation:	180° reversible
	Version:	slotted
	Shank type:	BMT
	Machine adaption:	Centering key b 18
	Tool adaption:	Ø 25
	Coolant:	EXT
	Center distance [mm]:	72
8 240 18 089	Boring bar holder Ø 32	
	Weight [kg]:	7.900
	Notation:	180° reversible
	Employment for:	Main- and sub spindle
	Shank type:	BMT
	Machine adaption:	Centering key b 18
	Tool adaption:	Ø 32
	Coolant:	IC/Ext
	Center distance [mm]:	72
8 240 19 032	Boring bar holder Ø 40	
	Weight [kg]:	7.671
	Notation:	180° reversible
	Employment for:	Main- and sub spindle
	Shank type:	BMT
	Machine adaption:	Centering key b 18
	Tool adaption:	Ø 40
	Coolant:	IC/Ext
	Pressure max [bar]:	80
	Center distance [mm]:	72

Part-#	Name	
8 240 19 048	Boring bar holder Ø 2"	
		Weight [kg]: 6.780 Notation: 180° reversible Employment for: Main- and sub spindle Shank type: BMT Machine adaption: Centering key b 18 Tool adaption: Ø 2" (50,8mm) Coolant: IC/Ext Center distance [mm]: 72
8 240 19 067	Boring bar holder Ø 50	
		Weight [kg]: 6.860 Notation: 180° reversible Employment for: Main- and sub spindle Shank type: BMT Machine adaption: Centering key b 18 Tool adaption: Ø 50 Coolant: IC/Ext Pressure max [bar]: 80 Center distance [mm]: 72
8 240 19 101	Boring bar holder Ø 40 - slotted	
		Weight [kg]: 4.390 Notation: 180° reversible Version: slotted Shank type: BMT Machine adaption: Centering key b 18 Tool adaption: Ø 40 Coolant: EXT Center distance [mm]: 72
8 240 19 128	Boring bar holder Ø 1 1/2"	
		Weight [kg]: 7.260 Notation: 180° reversible Employment for: Main- and sub spindle Shank type: BMT Machine adaption: Centering key b 18 Tool adaption: Ø 1 1/2" (38,1mm) Coolant: IC/Ext Center distance [mm]: 72
8 240 19 132	Boring bar holder Ø 40	
		Weight [kg]: 7.500 Notation: 180° reversible Employment for: Main- and sub spindle Shank type: BMT Machine adaption: Centering key b 18 Tool adaption: Ø 40 Coolant: IC/Ext Center distance [mm]: 72

Part-#	Name	
8 251 15 026	Combi multiple holder sq. 1"	
	Weight [kg]:	5.530
	Employment for:	Main spindle
	Shank type:	BMT
	Machine adaption:	Centering key b 18
	Tool adaption:	Sq. 1" (25,4mm)
		Sq. 1" (25,4mm)
	Coolant:	EXT
8 251 15 028	Combi multiple holder 3x sq. 25	
	Weight [kg]:	5.570
	Employment for:	Main spindle
	Shank type:	BMT
	Machine adaption:	Centering key b 18
	Tool adaption:	Sq. 25
		Sq. 25
	Coolant:	EXT
8 253 17 079	Multiple boring bar holder Ø 25	
	Weight [kg]:	8.120
	Employment for:	Main spindle
	Shank type:	BMT
	Machine adaption:	Centering key b 18
	Tool adaption:	Ø 25
		Ø 25
	Coolant:	IC/Ext
	Center distance [mm]:	56/107
8 253 17 080	Multiple boring bar holder Ø 1"	
	Weight [kg]:	8.020
	Employment for:	Main spindle
	Shank type:	BMT
	Machine adaption:	Centering key b 18
	Tool adaption:	Ø 1"(25,4 mm)
		Ø 1"(25,4 mm)
	Coolant:	IC/Ext
	Center distance [mm]:	56/107
8 253 17 097	Multiple boring bar holder, double Ø 25	
	Weight [kg]:	8.110
	Notation:	180° reversible
	Employment for:	Main- and sub spindle
	Shank type:	BMT
	Machine adaption:	Centering key b 18
	Tool adaption:	Ø 25
		Ø 25
		Ø 25
		Ø 25
		Ø 25
		Ø 25
	Coolant:	IC/Ext
	Center distance [mm]:	36/75/114

Part-#	Name	
8 253 18 005	Double boring bar holder Ø 1 1/4"	
	Weight [kg]:	9.100
	Notation:	180° reversible
	Employment for:	Main- and sub spindle
	Shank type:	BMT
	Machine adaption:	Centering key b 18
	Tool adaption:	Ø 1 1/4" (31,75mm)
	Coolant:	IC/Ext
	Center distance [mm]:	56/107
8 259 12 008	Multiple turning holder sq. 25/1"	
	Weight [kg]:	5.000
	Notation:	180° reversible
	Version:	Y-axes offset
	Shank type:	BMT
	Machine adaption:	Centering key b 18
	Tool adaption:	Sq. 25/1" (25,4 mm)
		Sq. 25/1" (25,4 mm)
	Coolant:	EXT
8 320 12 017	Cut-off holder, height adjustable SH 26 IC	
	Weight [kg]:	1.980
	Notation:	180° reversible
	Shank type:	BMT
	Machine adaption:	Centering key b 18
	Tool adaption:	Clampshaft SH 26
	Coolant:	IC/Ext
	Pressure max [bar]:	70
8 320 13 005	Cut-off holder, height adjustable SH 32 IC	
	Weight [kg]:	2.120
	Notation:	180° reversible
	Shank type:	BMT
	Machine adaption:	Centering key b 18
	Tool adaption:	Clampshaft SH 32
	Coolant:	IC/Ext
	Pressure max [bar]:	70
8 320 13 019	Cut-off holder, height adjustable SH 32 IC	
	Notation:	180° reversible
	Shank type:	BMT
	Machine adaption:	Centering key b 18
	Tool adaption:	Clampshaft SH 32
	Coolant:	IC/Ext
	Pressure max [bar]:	70
	Please note:	with offset cut-off tool holder; use
8 320 13 020	Cut-off holder, height adjustable SH 32 IC	
	Weight [kg]:	2.240
	Notation:	180° reversible
	Shank type:	BMT
	Machine adaption:	Centering key b 18
	Tool adaption:	Clampshaft SH 32
	Coolant:	IC/Ext
	Pressure max [bar]:	70
	Please note:	Clampshaft internal

HAAS

ST-25/Y - BMT 65

heimatec®

Part-#	Name
--------	------

8 320 19 020

Cut-off holder, height adjustable 845 IC



Notation:

Shank type:

Machine adaption:

Tool adaption:

Coolant:

Pressure max [bar]:

Please note:

180° reversible

BMT

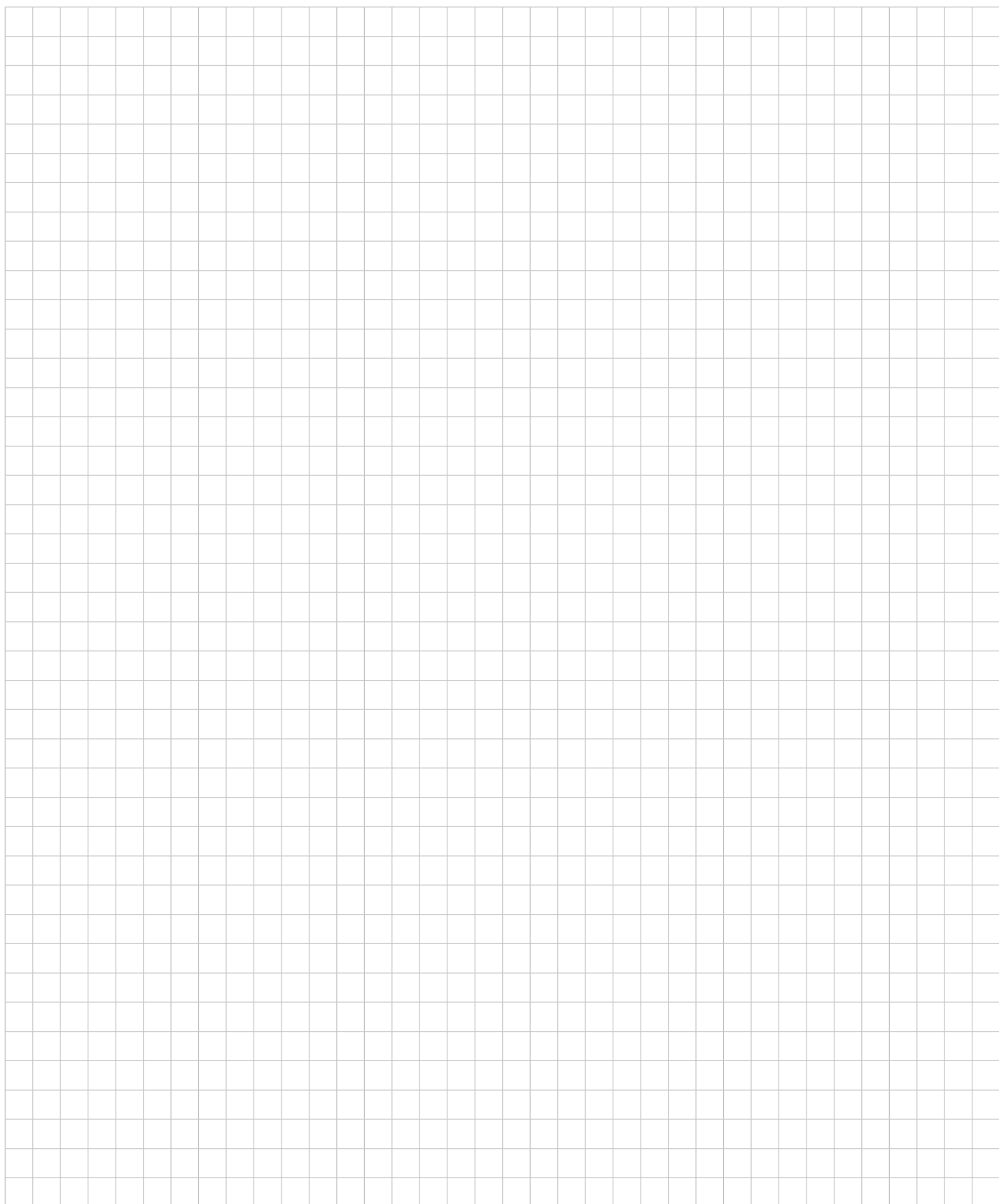
Centering key b 18

 System 845

IC

70

Clampshaft internal





heimatec.u-tec®

heimatec.com

Products / Tool change systems /
u-tec® Tool-changing system



versions see catalog



heimatec.easy-quick

heimatec.com

Products / Tool change systems /
easy-quick HT quick-changing system



versions see catalog



heimatec.Capto™

heimatec.com

Products / Tool change systems /
heimatec.Capto™ quick-changing system



versions see catalog



heimatec.accessories

heimatec.com

Products / Accessories



versions see catalog





● heimatec overseas branches

○ global representations of heimatec

heimatec[®]

heimatec GmbH
Präzisionswerkzeuge
Carl-Benz-Str. 4
77871 Renchen
Germany

T +49 7843 9466 0
www.heimatec.com
info@heimatec.com

Please find the contact details of our worldwide trading partners on our website:
<https://heimatec.com/business-partners>