

TOPSELLER -
many more available!

Live Tools

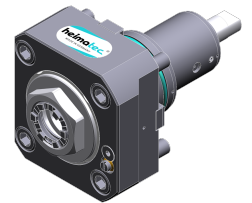
heimatec®

SMEC

SL 2000 SY - BMT 55

Part-#	Tool adaption	Rotation max [1/min]	Gear ratio	Coolant	Pressure max.	Center distance
Axial drilling and milling head						
8 010 55 038	ER 25 A - u-tec	6.000	1:1	IC/Ext	25 bar	--
8 010 55 039	ER 25 A - u-tec	12.000	1:1	EXT	140 bar	--
Axial drilling and milling head, offset						
8 019 55 054	ER 25 A - u-tec	6.000	1:1	IC/Ext	140 bar	--
Radial drilling and milling head						
8 030 55 175	ER 25 A - u-tec	12.000	1:1	EXT	--	60 mm
8 030 55 176	ER 25 A - u-tec	12.000	1:1	IC/Ext	140 bar	60 mm
8 030 55 102	ER 25 A - u-tec	12.000	1:1	EXT	--	70 mm
Universal head, offset						
8 043 55 005	ER 25 A - u-tec	6.000	1:1	EXT	--	50 mm

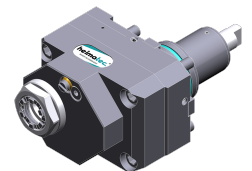
Illustrations similar.



8 010 55 038



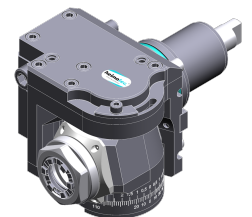
8 010 55 039



8 019 55 054



8 030 55 175



8 043 55 005

TOPSELLER -
many more available!

Static Tools

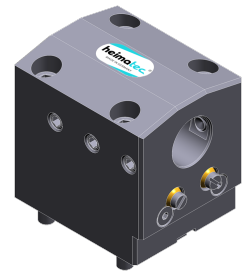
heimatec®

SMEC

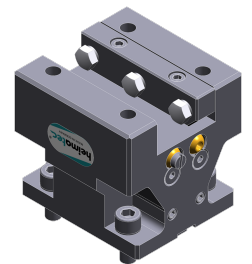
SL 2000 SY - BMT 55

Part-#	Tool adaption	Coolant	Pressure max.	Center distance
Boring bar holder				
8 240 08 002	Ø 32	IC/Ext	--	70 mm
Combi facing holder				
8 244 05 003	Sq. 25	EXT	80 bar	--
Double turning holder				
8 251 05 001	Sq. 25	EXT	80 bar	--
Double boring bar holder				
8 253 07 011	Ø 25	IC/Ext	80 bar	--
8 253 07 047	Ø 25	IC/Ext	--	--
8 253 08 002	Ø 32	IC/Ext	--	--
Multiple turning holder				
8 259 04 007	Sq. 20	IC/Ext	--	--
Cut-off holder, height adjustable				
8 320 03 025	Clampshaft SH 32	IC/Ext	70 bar	--

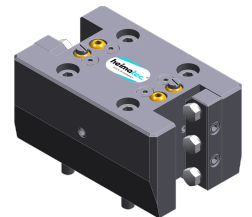
Illustrations similar.



8 240 08 002



8 244 05 003



8 251 05 001



8 253 07 011