

Victor  
**Vturn 45CM**



# High-tech from heimatec - heimatec - Tools and systems for productive turning and milling

heimatec belongs to the international technology and quality leaders for precision tools and specializes in the development and production of high-precision static and live tools for all CNC lathes, CNC turn-/mill machines and CNC machining centers.

The range of products\* spans from static BMT and VDI tool holders, live tools up to highly complex customer-specific individual solutions. heimatec, headquartered in Renchen, has a own subsidiary in Asia and India and numerous representatives as well as trading partners all over the world.

## \*OUR PRODCUTS

Static tool holders

Live tool units

Precision tools

Tools for turning and machining centres

Tools for swiss type lathes

Tool changing and uick-change systems

Tool systems for gear production

Digital tool management

This catalogue, including all its parts, is protected by copyright. Any use outside the restricted limitations of the Copyright Act without the consent of heimatec is inadmissible and liable to prosecution. This applies in particular to duplication, translation, microfilming and storage and processing in electronic systems.

**heimatec GmbH** reserves the right to make technical changes at any time without giving prior notice. This applies in particular to adjustments at any time to meet new or changed international standards, or in case of further developments of our products or manufacturing processes.

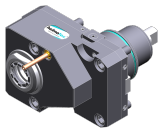
The current version of our General Terms and Conditions can be found on our website.

| Part-#  | Name  |                         |
|---|---|-------------------------|
| <b>8 010 67 039</b>   | <b>Axial drilling and milling head ER 40 AX UT IC</b> |                         |
|   | Weight [kg]:  | 6.000                   |
|   | Tool drive:   | Flat (~DIN 1809)        |
|   | Shank size [mm]:                                      | 75.00                   |
|   | Tool adaption:  | ER 40 A - u-tec         |
|   | Gear ratio [i]:                                       | 1:1                     |
|   | Torque max [Nm]:                                      | 100                     |
|   | Rotation max [1/min]:                                 | 4000                    |
|   | Rotating direction:                                   | same                    |
|   | Coolant:  | IC/Ext                  |
|   | Pressure max [bar]:                                   | 25                      |
|   | Please note:  | Combi bearing           |
| <b>8 010 67 049</b>   | <b>Axial drilling and milling head C 5</b>            |                         |
|    | Weight [kg]:  | 9.020                   |
|   | Tool drive:   | Flat (~DIN 1809)        |
|   | Shank size [mm]:                                      | 75.00                   |
|   | Shank type:   | BMT                     |
|   | Tool adaption:  | heimatec Capto(TM) C 5  |
|   | Gear ratio [i]:                                       | 1:1                     |
|   | Torque max [Nm]:                                      | 100                     |
|   | Rotation max [1/min]:                                 | 4000                    |
|   | Rotating direction:                                   | same                    |
|   | Coolant:  | EXT                     |
| <b>8 010 67 059</b>   | <b>Axial drilling and milling head ER 40 AX UT</b>    |                         |
|   | Weight [kg]:  | 5.880                   |
|   | Tool drive:   | Flat (~DIN 1809)        |
|   | Shank size [mm]:                                      | 75.00                   |
|   | Shank type:   | BMT                     |
|   | Tool adaption:  | ER 40 A - u-tec         |
|   | Gear ratio [i]:                                       | 1:1                     |
|   | Torque max [Nm]:                                      | 100                     |
|   | Rotation max [1/min]:                                 | 4000                    |
|   | Rotating direction:                                   | same                    |
|   | Coolant:  | EXT                     |
|   | Please note:  | Combi bearing           |
| <b>8 010 67 099</b>   | <b>Axial drilling and milling head ER 40 AX UT</b>    |                         |
|  | Weight [kg]:  | 5.770                   |
|   | Tool drive:   | Flat (~DIN 1809)        |
|   | Shank size [mm]:                                      | 75.00                   |
|   | Shank type:   | BMT                     |
|   | Tool adaption:  | ER 40 A - u-tec         |
|   | Gear ratio [i]:                                       | 1:1                     |
|   | Torque max [Nm]:                                      | 100                     |
|   | Rotation max [1/min]:                                 | 6000                    |
|   | Rotating direction:                                   | same                    |
|   | Coolant:  | EXT                     |
| <b>8 019 66 005</b>   | <b>Axial drilling and milling head ER 32 AX UT</b>    |                         |
|   | Weight [kg]:  | 9.440                   |
|   | Notation:   | offset; 180° reversible |
|   | Tool drive:   | Flat (~DIN 1809)        |
|   | Shank size [mm]:                                      | 75.00                   |
|   | Shank type:   | BMT                     |
|   | Tool adaption:  | ER 32 A - u-tec         |

| Part-# | Name |
|--------|------|
|--------|------|

Gear ratio [i]: 1:2  
 Torque max [Nm]: 50  
 Rotation max [1/min]: 10000  
 Rotating direction: opposite  
 Coolant: EXT  
 Please note: stronger bearing  
 Offset [mm]: 60

**8 019 66 013 Axial drilling and milling head ER 32 AX UT**



Weight [kg]: 9.550  
 Notation: offset; 180° reversible  
 Tool drive: Flat (~DIN 1809)  
 Shank size [mm]: 75.00  
 Shank type: BMT  
 Tool adaption: ER 32 A - u-tec  
 Gear ratio [i]: 1:1  
 Torque max [Nm]: 63  
 Rotation max [1/min]: 6000  
 Rotating direction: opposite  
 Coolant: EXT  
 Please note: stronger bearing  
 Offset [mm]: 60

**8 019 66 077 Axial drilling and milling head ER 32 AX UT IC**

Notation: offset; 180° reversible  
 Tool drive: Flat (~DIN 1809)  
 Shank size [mm]: 75.00  
 Shank type: BMT  
 Tool adaption: ER 32 A - u-tec  
 Gear ratio [i]: 1:2  
 Torque max [Nm]: 50  
 Rotation max [1/min]: 10000  
 Rotating direction: opposite  
 Coolant: IC/Ext  
 Pressure max [bar]: 140  
 Please note: stronger bearing  
 Offset [mm]: 60

**8 030 65 086 Radial drilling and milling head ER 25 AX UT**

Weight [kg]: 9.190  
 Notation: 180° reversible  
 Tool drive: Flat (~DIN 1809)  
 Shank size [mm]: 75.00  
 Shank type: BMT  
 Tool adaption: ER 25 A - u-tec  
 Gear ratio [i]: 1:2  
 Torque max [Nm]: 16  
 Rotation max [1/min]: 12000  
 Rotating direction: same  
 Coolant: EXT  
 Please note: stronger bearing  
 Center distance [mm]: 100

| Part-# | Name |
|--------|------|
|--------|------|

**8 030 67 071**



**Radial drilling and milling head ER 40 AX UT IC**

|                       |                  |
|-----------------------|------------------|
| Weight [kg]:          | 14.160           |
| Notation:             | 180° reversible  |
| Tool drive:           | Flat (~DIN 1809) |
| Shank size [mm]:      | 75.00            |
| Shank type:           | BMT              |
| Tool adaption:        | ER 40 A - u-tec  |
| Gear ratio [i]:       | 1:1              |
| Torque max [Nm]:      | 100              |
| Rotation max [1/min]: | 4000             |
| Rotating direction:   | same             |
| Coolant:              | IC/Ext           |
| Pressure max [bar]:   | 140              |
| Please note:          | Combi bearing    |
| Center distance [mm]: | 90               |

**8 030 67 074**



**Radial drilling and milling head ER 40 AX UT**

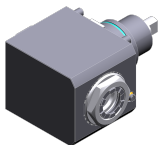
|                       |                  |
|-----------------------|------------------|
| Weight [kg]:          | 13.920           |
| Notation:             | 180° reversible  |
| Tool drive:           | Flat (~DIN 1809) |
| Shank size [mm]:      | 75.00            |
| Shank type:           | BMT              |
| Tool adaption:        | ER 40 A - u-tec  |
| Gear ratio [i]:       | 1:1              |
| Torque max [Nm]:      | 100              |
| Rotation max [1/min]: | 4000             |
| Rotating direction:   | same             |
| Coolant:              | EXT              |
| Please note:          | Combi bearing    |
| Center distance [mm]: | 90               |

**8 030 67 105**

**Radial drilling and milling head ER 40 AX UT**


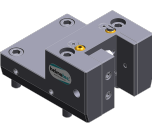
|                       |                  |
|-----------------------|------------------|
| Notation:             | 180° reversible  |
| Tool drive:           | Flat (~DIN 1809) |
| Shank size [mm]:      | 75.00            |
| Shank type:           | BMT              |
| Tool adaption:        | ER 40 A - u-tec  |
| Gear ratio [i]:       | 1:1              |
| Torque max [Nm]:      | 100              |
| Rotation max [1/min]: | 6000             |
| Rotating direction:   | same             |
| Coolant:              | EXT              |
| Please note:          | stronger bearing |
| Center distance [mm]: | 60               |

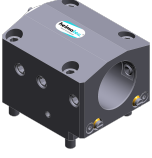

**8 030 67 106**



**Radial drilling and milling head ER 40 AX UT IC**

|                       |                  |
|-----------------------|------------------|
| Weight [kg]:          | 14.040           |
| Notation:             | 180° reversible  |
| Tool drive:           | Flat (~DIN 1809) |
| Shank size [mm]:      | 75.00            |
| Shank type:           | BMT              |
| Tool adaption:        | ER 40 A - u-tec  |
| Gear ratio [i]:       | 1:1              |
| Torque max [Nm]:      | 100              |
| Rotation max [1/min]: | 4000             |
| Rotating direction:   | same             |
| Coolant:              | IC/Ext           |

| Part-#   | Name   |                                       |
|--|--|---------------------------------------|
|  | Pressure max [bar]:                                | 140                                   |
|  | Please note:                                       | stronger bearing                      |
|  | Center distance [mm]:                              | 60                                    |
| <b>8 030 68 048</b>  | <b>Radial drilling and milling head HT 6 IC</b>    |                                       |
|  | Weight [kg]:                                       | 14.080                                |
|  | Notation:  | 180° reversible                       |
|  | Tool drive:  | Flat (~DIN 1809)                      |
|  | Shank size [mm]:                                   | 75.00                                 |
|  | Shank type:  | BMT                                   |
|  | Tool adaption:                                     | HT 6                                  |
|  | Gear ratio [i]:                                    | 1:1                                   |
|  | Torque max [Nm]:                                   | 100                                   |
|  | Rotation max [1/min]:                              | 6000                                  |
|  | Rotating direction:                                | same                                  |
|  | Coolant:   | IC/Ext                                |
|  | Pressure max [bar]:                                | 140                                   |
|  | Please note:                                       | stronger bearing                      |
|  | Center distance [mm]:                              | 60                                    |
| <b>8 040 65 024</b>  | <b>Universal head ± 90° adjustable ER 25 AX UT</b> |                                       |
|             | Weight [kg]:                                       | 7.840                                 |
|  | Tool drive:  | Flat (~DIN 1809)                      |
|  | Shank size [mm]:                                   | 75.00                                 |
|  | Shank type:  | BMT                                   |
|  | Tool adaption:                                     | ER 25 u-tec                           |
|  | Gear ratio [i]:                                    | 1:1                                   |
|  | Torque max [Nm]:                                   | 25                                    |
|  | Rotation max [1/min]:                              | 6000                                  |
|  | Rotating direction:                                | opposite                              |
|  | Coolant:   | EXT                                   |
|  | Please note:                                       | Note swivel range! ; stronger bearing |
|  | Center distance [mm]:                              | 90                                    |
| <b>8 202 20 014</b>  | <b>Basic holder longitudinal seat FN 12</b>        |                                       |
|  | Weight [kg]:                                       | 2.700                                 |
|  | Notation:  | 180° reversible                       |
|  | Shank type:  | BMT                                   |
|  | Machine adaption:                                  | Centering key b 25                    |
|  | Tool adaption:                                     | Interface FN 12                       |
|  | Coolant:   | EXT                                   |
|  | Center distance [mm]:                              | 25                                    |
| <b>8 224 26 002</b>  | <b>Universal turning holder sq. 32/25</b>          |                                       |
|  | Shank type:  | BMT                                   |
|  | Machine adaption:                                  | Centering key b 25                    |
|  | Tool adaption:                                     | Sq. 32                                |
|  | Coolant:   | EXT                                   |
| <b>8 224 26 008</b>  | <b>Universal turning holder sq. 1 1/4"/1"</b>      |                                       |
|  | Weight [kg]:                                       | 7.010                                 |
|  | Shank type:  | BMT                                   |
|  | Machine adaption:                                  | Centering key b 25                    |
|  | Tool adaption:                                     | Sq. 1 1/4" (31,75mm)<br>1" (25,4mm)   |
|  | Coolant:   | EXT                                   |

| Part-#  | Name  |  |
|---|---|--|
| <b>8 240 29 008</b>   | <b>Boring bar holder Ø 60</b>                     |  |
|    | Weight [kg]:                                      | 7.800                                  |
|   | Notation:   | 180° reversible                        |
|   | Employment for:                                   | Main- and sub spindle                  |
|   | Shank type:                                       | BMT                                    |
|   | Machine adaption:                                 | Centering key slot b 25                |
|   | Tool adaption:                                    | Ø 60                                   |
|   | Coolant:  | IC/Ext                                 |
|   | Center distance [mm]:                             | 60                                     |
| <b>8 244 25 002</b>   | <b>Combi facing holder sq. 25</b>                 |  |
|   | Weight [kg]:                                      | 4.100                                  |
|   | Shank type:                                       | BMT                                    |
|   | Machine adaption:                                 | Centering key slot b 25                |
|   | Tool adaption:                                    | Sq. 25                                 |
|   |   | Sq. 25                                 |
|   | Coolant:  | EXT                                    |
| <b>8 244 26 002</b>   | <b>Combi facing holder sq. 32/25</b>              |  |
|   | Weight [kg]:                                      | 14.750                                 |
|   | Notation:   | 180° reversible                        |
|   | Shank type:                                       | BMT                                    |
|   | Machine adaption:                                 | Centering key b 25                     |
|   | Tool adaption:                                    | Sq. 32/25                              |
|   | Coolant:  | EXT                                    |
|   | Please note:                                      | with spacer strip for sq. 25           |
|   | Center distance [mm]:                             | 105                                    |
| <b>8 244 26 005</b>   | <b>Combi facing holder sq. 1 1/4"/1"</b>          |  |
|   | Weight [kg]:                                      | 14.780                                 |
|   | Notation:   | 180° reversible                        |
|   | Shank type:                                       | BMT                                    |
|   | Machine adaption:                                 | Centering key b 25                     |
|   | Tool adaption:                                    | Sq. 1 1/4" (31,75mm) / sq. 1" (25,4mm) |
|   | Coolant:  | EXT                                    |
|   | Please note:                                      | with spacer strip for sq. 1" (25,4mm)  |
|   | Center distance [mm]:                             | 105                                    |
| <b>8 320 23 011</b>   | <b>Cut-off holder, height adjustable SH 32 IC</b> |  |
|  | Weight [kg]:                                      | 3.290                                  |
|   | Notation:   | 180° reversible                        |
|   | Shank type:                                       | BMT                                    |
|   | Machine adaption:                                 | Centering key b 25                     |
|   | Tool adaption:                                    | Clampshaft SH 32                       |
|   | Coolant:  | IC/Ext                                 |
|   | Pressure max [bar]:                               | 70                                     |
| <b>8 320 23 025</b>   | <b>Cut-off holder, height adjustable SH 32 IC</b> |  |
|   | Weight [kg]:                                      | 3.460                                  |
|   | Notation:   | 180° reversible                        |
|   | Shank type:                                       | BMT                                    |
|   | Machine adaption:                                 | Centering key b 25                     |
|   | Tool adaption:                                    | Clampshaft SH 32                       |
|   | Coolant:  | IC/Ext                                 |
|   | Pressure max [bar]:                               | 70                                     |
|   | Please note:                                      | Clampshaft internal                    |



● heimatec overseas branches

○ global representations of heimatec

**heimatec**<sup>®</sup>

**heimatec GmbH**  
Präzisionswerkzeuge  
Carl-Benz-Str. 4  
77871 Renchen  
Germany

T +49 7843 9466 0  
[www.heimatec.com](http://www.heimatec.com)  
[info@heimatec.com](mailto:info@heimatec.com)

Please find the contact details of our worldwide trading partners on our website:  
<https://heimatec.com/business-partners>