

Mazak

**SQT 18**

**M/MS/MY/MSY**



# High-tech from heimatec - heimatec - Tools and systems for productive turning and milling

heimatec belongs to the international technology and quality leaders for precision tools and specializes in the development and production of high-precision static and live tools for all CNC lathes, CNC turn-/mill machines and CNC machining centers.

The range of products\* spans from static BMT and VDI tool holders, live tools up to highly complex customer-specific individual solutions. heimatec, headquartered in Renchen, has a own subsidiary in Asia and India and numerous representatives as well as trading partners all over the world.

## \*OUR PRODCUTS

Static tool holders

Live tool units

Precision tools

Tools for turning and machining centres

Tools for swiss type lathes

Tool changing and uick-change systems

Tool systems for gear production

Digital tool management

This catalogue, including all its parts, is protected by copyright. Any use outside the restricted limitations of the Copyright Act without the consent of heimatec is inadmissible and liable to prosecution. This applies in particular to duplication, translation, microfilming and storage and processing in electronic systems.

**heimatec GmbH** reserves the right to make technical changes at any time without giving prior notice. This applies in particular to adjustments at any time to meet new or changed international standards, or in case of further developments of our products or manufacturing processes.

The current version of our General Terms and Conditions can be found on our website.

Part-#	Name	
<b>8 010 45 009</b>	<b>Axial drilling and milling head ER 25</b>	
	Weight [kg]:	3.920
	Tool drive:	Flat (~DIN 1809)
	Shank size [mm]:	40.00
	Shank type:	VDI
	Tool adaption:	ER 25
	Gear ratio [i]:	1:1
	Torque max [Nm]:	50
	Rotation max [1/min]:	6000
	Rotating direction:	same
	Coolant:	EXT
<b>8 010 46 044</b>	<b>Axial drilling and milling head ER 32 IC</b>	
	Weight [kg]:	3.980
	Tool drive:	Flat (~DIN 1809)
	Shank size [mm]:	40.00
	Shank type:	VDI
	Tool adaption:	ER 32
	Gear ratio [i]:	1:1
	Torque max [Nm]:	50
	Rotation max [1/min]:	6000
	Rotating direction:	same
	Coolant:	IC/Ext
	Pressure max [bar]:	25
<b>8 010 46 239</b>	<b>Axial drilling and milling head ER 32 AX UT IC</b>	
	Weight [kg]:	4.030
	Tool drive:	Flat (~DIN 1809)
	Shank size [mm]:	40.00
	Shank type:	VDI
	Tool adaption:	ER 32 A - u-tec
	Gear ratio [i]:	1:1
	Torque max [Nm]:	50
	Rotation max [1/min]:	6000
	Rotating direction:	same
	Coolant:	IC/Ext
	Pressure max [bar]:	25
<b>8 011 44 003</b>	<b>Axial milling head universal arbor 3/4"</b>	
	Tool drive:	Flat (~DIN 1809)
	Shank size [mm]:	40.00
	Shank type:	VDI
	Tool adaption:	Universal arbor 3/4" (19,05mm)
	Gear ratio [i]:	1:1
	Torque max [Nm]:	50
	Rotation max [1/min]:	6000
	Rotating direction:	same
	Coolant:	EXT
<b>8 011 44 015</b>	<b>Axial milling head universal arbor 16</b>	
	Tool drive:	Flat (~DIN 1809)
	Shank size [mm]:	40.00
	Shank type:	VDI
	Tool adaption:	Universal arbor 16
	Gear ratio [i]:	1:1
	Torque max [Nm]:	50
	Rotation max [1/min]:	6000
	Rotating direction:	same

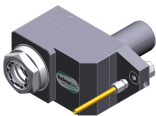
Part-#	Name	
	Coolant:	EXT
	Please note:	stronger bearing
<b>8 018 45 000</b>	<b>Axial drilling and milling head ER 25</b>	
	Weight [kg]:	6.500
	Notation:	Y-axes adjustable
	Tool drive:	Flat (~DIN 1809)
	Shank size [mm]:	40.00
	Shank type:	VDI
	Tool adaption:	ER 25
	Gear ratio [i]:	1:1
	Torque max [Nm]:	50
	Rotation max [1/min]:	6000
	Rotating direction:	opposite
	Coolant:	EXT
<b>8 019 42 000</b>	<b>Axial drilling and milling head Weldon 6</b>	
	Notation:	offset
	Tool drive:	Flat (~DIN 1809)
	Shank size [mm]:	40.00
	Shank type:	VDI
	Tool adaption:	Weldon (DIN 1835 b) 6
	Gear ratio [i]:	1:1
	Torque max [Nm]:	50
	Rotation max [1/min]:	6000
	Rotating direction:	opposite
	Coolant:	EXT
	Offset [mm]:	50
<b>8 019 43 001</b>	<b>Axial drilling and milling head Weldon 8</b>	
	Notation:	offset
	Tool drive:	Flat (~DIN 1809)
	Shank size [mm]:	40.00
	Shank type:	VDI
	Tool adaption:	Weldon (DIN 1835 b) 8
	Gear ratio [i]:	1:1
	Torque max [Nm]:	50
	Rotation max [1/min]:	6000
	Rotating direction:	opposite
	Coolant:	EXT
	Offset [mm]:	50
<b>8 019 44 000</b>	<b>Axial milling head universal arbor 16</b>	
	Notation:	offset
	Tool drive:	Flat (~DIN 1809)
	Shank size [mm]:	40.00
	Shank type:	VDI
	Tool adaption:	Universal arbor 16
	Gear ratio [i]:	1:2
	Torque max [Nm]:	25
	Rotation max [1/min]:	12000
	Rotating direction:	opposite
	Coolant:	EXT
	Offset [mm]:	50

Part-#	Name	
<b>8 019 44 006</b>	<b>Axial drilling and milling head Weldon 10</b>	
	Notation:	offset
	Tool drive:	Flat (~DIN 1809)
	Shank size [mm]:	40.00
	Shank type:	VDI
	Tool adaption:	Weldon (DIN 1835 b) 10
	Gear ratio [i]:	1:1
	Torque max [Nm]:	50
	Rotation max [1/min]:	6000
	Rotating direction:	opposite
	Coolant:	EXT
	Offset [mm]:	50
<b>8 019 45 015</b>	<b>Axial milling head universal arbor 22</b>	
	Notation:	offset
	Tool drive:	Flat (~DIN 1809)
	Shank size [mm]:	40.00
	Shank type:	VDI
	Tool adaption:	Universal arbor 22
	Gear ratio [i]:	1:2
	Torque max [Nm]:	25
	Rotation max [1/min]:	12000
	Rotating direction:	opposite
	Coolant:	EXT
	Offset [mm]:	50
<b>8 019 45 036</b>	<b>Axial milling head universal arbor 22</b>	
	Weight [kg]:	6.010
	Notation:	offset
	Tool drive:	Flat (~DIN 1809)
	Shank size [mm]:	40.00
	Shank type:	VDI
	Tool adaption:	Universal arbor 22
	Gear ratio [i]:	1:1
	Torque max [Nm]:	50
	Rotation max [1/min]:	6000
	Rotating direction:	opposite
	Coolant:	EXT
	Please note:	stronger bearing
<b>8 019 45 040</b>	<b>Axial milling head universal arbor 22</b>	
	Notation:	offset
	Tool drive:	Flat (~DIN 1809)
	Shank size [mm]:	40.00
	Shank type:	VDI
	Tool adaption:	Universal arbor 22
	Gear ratio [i]:	2:1
	Torque max [Nm]:	80
	Rotation max [1/min]:	3000
	Rotating direction:	opposite
	Coolant:	EXT
	Please note:	stronger bearing
	Offset [mm]:	50

Part-#	Name	
<b>8 019 45 049</b>	<b>Axial milling head universal arbor 22</b>	
	Notation:	offset
	Version:	Special
	Tool drive:	Flat (~DIN 1809)
	Shank size [mm]:	40.00
	Shank type:	VDI
	Tool adaption:	Universal arbor 22
	Gear ratio [i]:	1:1
	Torque max [Nm]:	50
	Rotation max [1/min]:	6000
	Rotating direction:	opposite
	Coolant:	EXT
	Please note:	stronger bearing (extended version)
	Offset [mm]:	50
<b>8 019 45 070</b>	<b>Axial drilling and milling head Weldon 16 IC</b>	
	Notation:	offset
	Tool drive:	Flat (~DIN 1809)
	Shank size [mm]:	40.00
	Shank type:	VDI
	Tool adaption:	Weldon (DIN 1835 b) 16
	Gear ratio [i]:	1:1
	Torque max [Nm]:	50
	Rotation max [1/min]:	6000
	Rotating direction:	opposite
	Coolant:	IC/Ext
	Pressure max [bar]:	25
	Please note:	stronger bearing
	Offset [mm]:	50
<b>8 019 45 108</b>	<b>Axial drilling and milling head ER 25 AX UT</b>	
	Weight [kg]:	5.450
	Notation:	offset
	Tool drive:	Flat (~DIN 1809)
	Shank size [mm]:	40.00
	Shank type:	VDI
	Tool adaption:	ER 25 A - u-tec
	Gear ratio [i]:	1:1
	Torque max [Nm]:	50
	Rotation max [1/min]:	6000
	Rotating direction:	opposite
	Coolant:	EXT
	Please note:	stronger bearing
	Offset [mm]:	50
<b>8 019 45 109</b>	<b>Axial drilling and milling head ER 25 AX UT IC</b>	
	Weight [kg]:	5.850
	Notation:	offset
	Tool drive:	Flat (~DIN 1809)
	Shank size [mm]:	40.00
	Shank type:	VDI
	Tool adaption:	ER 25 A - u-tec
	Gear ratio [i]:	1:1
	Torque max [Nm]:	50
	Rotation max [1/min]:	6000
	Rotating direction:	opposite
	Coolant:	IC/Ext
	Pressure max [bar]:	140

Part-#	Name	
	Please note:	stronger bearing
	Offset [mm]:	50
<b>8 019 45 143</b>	<b>Axial drilling and milling head ER 25 AX UT</b>	
	Weight [kg]:	7.280
	Notation:	offset
	Tool drive:	Flat (~DIN 1809)
	Shank size [mm]:	40.00
	Shank type:	VDI
	Tool adaption:	ER 25 A - u-tec
	Gear ratio [i]:	1:3
	Torque max [Nm]:	16
	Rotation max [1/min]:	15000
	Rotating direction:	opposite
	Coolant:	EXT
	Please note:	stronger bearing
	Offset [mm]:	50
<b>8 019 46 004</b>	<b>Axial drilling and milling head ER 32</b>	
	Weight [kg]:	5.480
	Notation:	offset
	Tool drive:	Flat (~DIN 1809)
	Shank size [mm]:	40.00
	Shank type:	VDI
	Tool adaption:	ER 32
	Gear ratio [i]:	1:1
	Torque max [Nm]:	50
	Rotation max [1/min]:	6000
	Rotating direction:	opposite
	Coolant:	EXT
	Offset [mm]:	50
<b>8 019 46 010</b>	<b>Axial drilling and milling head ER 32 IC</b>	
	Weight [kg]:	5.700
	Notation:	offset
	Tool drive:	Flat (~DIN 1809)
	Shank size [mm]:	40.00
	Shank type:	VDI
	Tool adaption:	ER 32
	Gear ratio [i]:	1:1
	Torque max [Nm]:	50
	Rotation max [1/min]:	6000
	Rotating direction:	opposite
	Coolant:	IC/Ext
	Pressure max [bar]:	140
	Offset [mm]:	50
<b>8 019 46 014</b>	<b>Axial drilling and milling head ER 32 AX UT</b>	
	Notation:	offset
	Tool drive:	Flat (~DIN 1809)
	Shank size [mm]:	40.00
	Shank type:	VDI
	Tool adaption:	ER 32 A - u-tec
	Gear ratio [i]:	2:1
	Torque max [Nm]:	80
	Rotation max [1/min]:	3000
	Rotating direction:	opposite
	Coolant:	EXT

Part-#	Name	
	Please note:	stronger bearing
	Offset [mm]:	50
<b>8 019 46 062</b>	<b>Axial drilling and milling head ER 32 IC</b>	
	Notation:	offset
	Employment for:	Sub spindle
	Tool drive:	Flat (~DIN 1809)
	Shank size [mm]:	40.00
	Shank type:	VDI
	Tool adaption:	ER 32
	Gear ratio [i]:	1:1
	Torque max [Nm]:	50
	Rotation max [1/min]:	6000
	Rotating direction:	opposite
	Coolant:	IC/Ext
	Pressure max [bar]:	140
	Offset [mm]:	50
<b>8 019 46 071</b>	<b>Axial drilling and milling head ER 32 AX UT IC</b>	
	Weight [kg]:	5.990
	Notation:	offset
	Tool drive:	Flat (~DIN 1809)
	Shank size [mm]:	40.00
	Shank type:	VDI
	Tool adaption:	ER 32 A - u-tec
	Gear ratio [i]:	1:1
	Torque max [Nm]:	50
	Rotation max [1/min]:	6000
	Rotating direction:	opposite
	Coolant:	IC/Ext
	Pressure max [bar]:	140
	Please note:	stronger bearing
	Offset [mm]:	50
<b>8 019 46 072</b>	<b>Axial drilling and milling head HT 4</b>	
	Notation:	offset
	Tool drive:	Flat (~DIN 1809)
	Shank size [mm]:	40.00
	Shank type:	VDI
	Tool adaption:	HT 4
	Gear ratio [i]:	1:1
	Torque max [Nm]:	50
	Rotation max [1/min]:	6000
	Rotating direction:	opposite
	Coolant:	EXT
	Offset [mm]:	50
<b>8 019 46 104</b>	<b>Axial drilling and milling head ER 32 AX UT</b>	
	Weight [kg]:	5.850
	Notation:	offset
	Tool drive:	Flat (~DIN 1809)
	Shank size [mm]:	40.00
	Shank type:	VDI
	Tool adaption:	ER 32 A - u-tec
	Gear ratio [i]:	1:1
	Torque max [Nm]:	50
	Rotation max [1/min]:	6000



Part-#	Name	
	Rotating direction:	opposite
	Coolant:	EXT
	Please note:	stronger bearing
	Offset [mm]:	50
<b>8 019 46 111</b>	<b>Axial drilling and milling head ER 32 AX UT IC</b>	
	Weight [kg]:	7.320
	Notation:	offset
	Tool drive:	Flat (~DIN 1809)
	Shank size [mm]:	40.00
	Shank type:	VDI
	Tool adaption:	ER 32 A - u-tec
	Gear ratio [i]:	1:2
	Torque max [Nm]:	32
	Rotation max [1/min]:	12000
	Rotating direction:	opposite
	Coolant:	IC/Ext
	Pressure max [bar]:	140
<b>8 019 46 127</b>	<b>Axial drilling and milling head ER 32 AX UT IC</b>	
	Weight [kg]:	6.860
	Notation:	offset
	Employment for:	Sub spindle
	Tool drive:	Flat (~DIN 1809)
	Shank size [mm]:	40.00
	Shank type:	VDI
	Tool adaption:	ER 32 A - u-tec
	Gear ratio [i]:	1:1
	Torque max [Nm]:	50
	Rotation max [1/min]:	6000
	Rotating direction:	opposite
	Coolant:	IC/Ext
	Pressure max [bar]:	140
	Please note:	stronger bearing
	Offset [mm]:	50
<b>8 019 46 132</b>	<b>Axial drilling and milling head ER 32 AX UT</b>	
	Weight [kg]:	6.790
	Notation:	offset
	Employment for:	Sub spindle
	Tool drive:	Flat (~DIN 1809)
	Shank size [mm]:	40.00
	Shank type:	VDI
	Tool adaption:	ER 32 A - u-tec
	Gear ratio [i]:	1:1
	Torque max [Nm]:	50
	Rotation max [1/min]:	6000
	Rotating direction:	opposite
	Coolant:	EXT
	Please note:	stronger bearing
	Offset [mm]:	50



Part-#	Name	
<b>8 019 46 151</b>	<b>Axial drilling and milling head HT 4 IC</b>	
	Weight [kg]:	5.570
	Notation:	offset
	Tool drive:	Flat (~DIN 1809)
	Shank size [mm]:	40.00
	Shank type:	VDI
	Tool adaption:	HT 4
	Gear ratio [i]:	1:1
	Torque max [Nm]:	50
	Rotation max [1/min]:	6000
	Rotating direction:	opposite
	Coolant:	IC/Ext
	Pressure max [bar]:	140
	Offset [mm]:	50
<b>8 019 46 186</b>	<b>Axial drilling and milling head Weldon 20</b>	
	Weight [kg]:	6.180
	Notation:	offset
	Tool drive:	Flat (~DIN 1809)
	Shank size [mm]:	40.00
	Shank type:	VDI
	Tool adaption:	Weldon (DIN 1835 b) 20
	Gear ratio [i]:	1:1
	Torque max [Nm]:	50
	Rotation max [1/min]:	6000
	Rotating direction:	opposite
	Coolant:	EXT
	Please note:	stronger bearing
	Offset [mm]:	50
<b>8 019 46 202</b>	<b>Axial drilling and milling head ER 32 AX UT IC</b>	
	Weight [kg]:	7.280
	Notation:	offset
	Tool drive:	Flat (~DIN 1809)
	Shank size [mm]:	40.00
	Shank type:	VDI
	Tool adaption:	ER 32 A - u-tec
	Gear ratio [i]:	2:1
	Torque max [Nm]:	80
	Rotation max [1/min]:	3000
	Rotating direction:	opposite
	Coolant:	IC/Ext
	Pressure max [bar]:	140
	Please note:	stronger bearing
	Offset [mm]:	50
<b>8 019 46 221</b>	<b>Axial drilling and milling head ER 32 AX UT</b>	
	Weight [kg]:	9.330
	Notation:	offset
	Employment for:	Main spindle
	Tool drive:	Flat (~DIN 1809)
	Shank size [mm]:	40.00
	Shank type:	VDI
	Tool adaption:	ER 32 A - u-tec
	Gear ratio [i]:	1:1
	Torque max [Nm]:	50
	Rotation max [1/min]:	6000
	Rotating direction:	opposite

Part-#	Name	
	Coolant:	EXT
	Please note:	stronger bearing
	Offset [mm]:	115
<b>8 019 46 224</b>	<b>Axial drilling and milling head HT 4 IC</b>	
	Weight [kg]:	7.480
	Notation:	offset
	Tool drive:	Flat (~DIN 1809)
	Shank size [mm]:	40.00
	Shank type:	VDI
	Tool adaption:	HT 4
	Gear ratio [i]:	1:3
	Torque max [Nm]:	16
	Rotation max [1/min]:	15000
	Rotating direction:	opposite
	Coolant:	IC/Ext
	Pressure max [bar]:	140
	Please note:	stronger bearing
	Offset [mm]:	50
<b>8 019 47 003</b>	<b>Axial drilling and milling head Weldon 25</b>	
	Weight [kg]:	6.270
	Notation:	offset
	Tool drive:	Flat (~DIN 1809)
	Shank size [mm]:	40.00
	Shank type:	VDI
	Tool adaption:	Weldon (DIN 1835 b) 25
	Gear ratio [i]:	1:1
	Torque max [Nm]:	50
	Rotation max [1/min]:	6000
	Rotating direction:	opposite
	Coolant:	EXT
	Please note:	stronger bearing
	Offset [mm]:	50
<b>8 019 47 006</b>	<b>Axial drilling and milling head HT 5</b>	
	Weight [kg]:	5.430
	Notation:	offset
	Tool drive:	Flat (~DIN 1809)
	Shank size [mm]:	40.00
	Shank type:	VDI
	Tool adaption:	HT 5
	Gear ratio [i]:	1:1
	Torque max [Nm]:	50
	Rotation max [1/min]:	6000
	Rotating direction:	opposite
	Coolant:	EXT
	Offset [mm]:	50
<b>8 019 47 009</b>	<b>Axial drilling and milling head HT 5 IC</b>	
	Weight [kg]:	5.620
	Notation:	offset
	Tool drive:	Flat (~DIN 1809)
	Shank size [mm]:	40.00
	Shank type:	VDI
	Tool adaption:	HT 5
	Gear ratio [i]:	1:1
	Torque max [Nm]:	50

Part-#	Name	
	Rotation max [1/min]:	6000
	Rotating direction:	opposite
	Coolant:	IC/Ext
	Pressure max [bar]:	140
<b>8 019 47 015</b>	<b>Axial drilling and milling head HT 5</b>	
	Notation:	offset
	Tool drive:	Flat (~DIN 1809)
	Shank size [mm]:	40.00
	Shank type:	VDI
	Tool adaption:	HT 5
	Gear ratio [i]:	1:1
	Torque max [Nm]:	50
	Rotation max [1/min]:	6000
	Rotating direction:	opposite
	Coolant:	EXT
	Please note:	stronger bearing
	Offset [mm]:	50
<b>8 019 47 016</b>	<b>Axial drilling and milling head HT 5 IC</b>	
	Weight [kg]:	5.980
	Notation:	offset
	Tool drive:	Flat (~DIN 1809)
	Shank size [mm]:	40.00
	Shank type:	VDI
	Tool adaption:	HT 5
	Gear ratio [i]:	1:1
	Torque max [Nm]:	50
	Rotation max [1/min]:	6000
	Rotating direction:	opposite
	Coolant:	IC/Ext
	Pressure max [bar]:	140
	Please note:	stronger bearing
	Offset [mm]:	50
<b>8 030 42 002</b>	<b>Radial drilling and milling head Weldon 6 IC</b>	
	Tool drive:	Flat (~DIN 1809)
	Shank size [mm]:	40.00
	Shank type:	VDI
	Tool adaption:	Weldon (DIN 1835 b) 6
	Gear ratio [i]:	1:2
	Torque max [Nm]:	16
	Rotation max [1/min]:	12000
	Rotating direction:	opposite
	Coolant:	IC/Ext
	Pressure max [bar]:	25
<b>8 030 43 006</b>	<b>Radial drilling and milling head Weldon 8 IC</b>	
	Employment for:	Main spindle
	Tool drive:	Flat (~DIN 1809)
	Shank size [mm]:	40.00
	Shank type:	VDI
	Tool adaption:	Weldon (DIN 1835 b) 8
	Gear ratio [i]:	1:1
	Torque max [Nm]:	50
	Rotation max [1/min]:	6000
	Rotating direction:	opposite
	Coolant:	IC/Ext

Part-#	Name	
	Pressure max [bar]:	25
	Center distance [mm]:	130
<b>8 030 44 085</b>	<b>Radial drilling and milling head ER 16 AX UT</b>	
	Weight [kg]:	9.570
	Employment for:	Main spindle
	Tool drive:	Flat (~DIN 1809)
	Shank size [mm]:	40.00
	Shank type:	VDI
	Tool adaption:	ER 16 A - u-tec
	Gear ratio [i]:	1:4
	Torque max [Nm]:	5
	Rotation max [1/min]:	24000
	Rotating direction:	opposite
	Coolant:	EXT
	Center distance [mm]:	130
<b>8 030 45 034</b>	<b>Radial drilling and milling head ER 25 AX UT</b>	
	Tool drive:	Flat (~DIN 1809)
	Shank size [mm]:	40.00
	Shank type:	VDI
	Tool adaption:	ER 25 A - u-tec
	Gear ratio [i]:	1:3
	Torque max [Nm]:	12
	Rotation max [1/min]:	12000
	Rotating direction:	same
	Coolant:	EXT
	Please note:	stronger bearing
	Center distance [mm]:	130
<b>8 030 45 048</b>	<b>Radial drilling and milling head ER 25</b>	
	Employment for:	Main spindle
	Tool drive:	Flat (~DIN 1809)
	Shank size [mm]:	40.00
	Shank type:	VDI
	Tool adaption:	ER 25
	Gear ratio [i]:	1:2
	Torque max [Nm]:	16
	Rotation max [1/min]:	12000
	Rotating direction:	opposite
	Coolant:	EXT
	Center distance [mm]:	130
<b>8 030 45 068</b>	<b>Radial drilling and milling head ER 25</b>	
	Weight [kg]:	8.680
	Tool drive:	Flat (~DIN 1809)
	Shank size [mm]:	40.00
	Shank type:	VDI
	Tool adaption:	ER 25
	Gear ratio [i]:	1:3
	Torque max [Nm]:	8
	Rotation max [1/min]:	12000
	Rotating direction:	opposite
	Coolant:	EXT
	Center distance [mm]:	130

Part-#	Name	
<b>8 030 45 116</b>	<b>Radial drilling and milling head Weldon 16 IC</b>	
	Employment for:	Main spindle
	Tool drive:	Flat (~DIN 1809)
	Shank size [mm]:	40.00
	Shank type:	VDI
	Tool adaption:	Weldon (DIN 1835 b) 16
	Gear ratio [i]:	1:1
	Torque max [Nm]:	50
	Rotation max [1/min]:	6000
	Rotating direction:	opposite
	Coolant:	IC/Ext
	Pressure max [bar]:	25
	Please note:	stronger bearing
	Center distance [mm]:	130
<b>8 030 45 174</b>	<b>Radial drilling and milling head ER 25 AX UT IC</b>	
	Weight [kg]:	8.820
	Employment for:	Main spindle
	Tool drive:	Flat (~DIN 1809)
	Shank size [mm]:	40.00
	Shank type:	VDI
	Tool adaption:	ER 25 A - u-tec
	Gear ratio [i]:	1:3
	Torque max [Nm]:	12
	Rotation max [1/min]:	15000
	Rotating direction:	same
	Coolant:	IC/Ext
	Pressure max [bar]:	140
	Please note:	stronger bearing
	Center distance [mm]:	130
<b>8 030 45 205</b>	<b>Radial drilling and milling head ER 25 AX UT IC</b>	
	Weight [kg]:	8.890
	Employment for:	Main spindle
	Tool drive:	Flat (~DIN 1809)
	Shank size [mm]:	40.00
	Shank type:	VDI
	Tool adaption:	ER 25 A - u-tec
	Gear ratio [i]:	1:1
	Torque max [Nm]:	50
	Rotation max [1/min]:	6000
	Rotating direction:	opposite
	Coolant:	IC/Ext
	Pressure max [bar]:	140
	Center distance [mm]:	130
<b>8 030 45 209</b>	<b>Radial drilling and milling head ER 25 AX UT</b>	
	Weight [kg]:	8.380
	Employment for:	Main spindle
	Tool drive:	Flat (~DIN 1809)
	Shank size [mm]:	40.00
	Shank type:	VDI
	Tool adaption:	ER 25 A - u-tec
	Gear ratio [i]:	1:1
	Torque max [Nm]:	50
	Rotation max [1/min]:	6000
	Rotating direction:	opposite
	Coolant:	EXT

Part-#	Name	
	Center distance [mm]:	130
<b>8 030 45 247</b>	<b>Radial drilling and milling head ER 25 AX UT</b>	
	Weight [kg]:	8.610
	Employment for:	Main spindle
	Tool drive:	Flat (~DIN 1809)
	Shank size [mm]:	40.00
	Shank type:	VDI
	Tool adaption:	ER 25 A - u-tec
	Gear ratio [i]:	1:3
	Torque max [Nm]:	12
	Rotation max [1/min]:	15000
	Rotating direction:	same
	Coolant:	EXT
	Please note:	stronger bearing
	Center distance [mm]:	130
<b>8 030 45 303</b>	<b>Radial drilling and milling head ER 25 AX UT IC</b>	
	Weight [kg]:	8.830
	Employment for:	Sub spindle
	Tool drive:	Flat (~DIN 1809)
	Shank size [mm]:	40.00
	Shank type:	VDI
	Tool adaption:	ER 25 A - u-tec
	Gear ratio [i]:	1:3
	Torque max [Nm]:	12
	Rotation max [1/min]:	15000
	Rotating direction:	same
	Coolant:	IC/Ext
	Pressure max [bar]:	140
	Please note:	stronger bearing
	Center distance [mm]:	130
<b>8 030 46 039</b>	<b>Radial drilling and milling head ER 32 IC</b>	
	Weight [kg]:	9.040
	Employment for:	Main spindle
	Tool drive:	Flat (~DIN 1809)
	Shank size [mm]:	40.00
	Shank type:	VDI
	Tool adaption:	ER 32
	Gear ratio [i]:	1:1
	Torque max [Nm]:	50
	Rotation max [1/min]:	6000
	Rotating direction:	opposite
	Coolant:	IC/Ext
	Pressure max [bar]:	140
	Center distance [mm]:	130
<b>8 030 46 064</b>	<b>Radial drilling and milling head ER 32</b>	
	Weight [kg]:	8.480
	Employment for:	Main spindle
	Tool drive:	Flat (~DIN 1809)
	Shank size [mm]:	40.00
	Shank type:	VDI
	Tool adaption:	ER 32
	Gear ratio [i]:	2:1
	Torque max [Nm]:	63
	Rotation max [1/min]:	4000

Part-#	Name	
	Rotating direction:	opposite
	Coolant:	EXT
	Center distance [mm]:	130
<b>8 030 46 098</b>	<b>Radial drilling and milling head ER 32</b>	
	Weight [kg]:	9.060
	Employment for:	Main spindle
	Tool drive:	Flat (~DIN 1809)
	Shank size [mm]:	40.00
	Shank type:	VDI
	Tool adaption:	ER 32
	Gear ratio [i]:	1:1
	Torque max [Nm]:	50
	Rotation max [1/min]:	6000
	Rotating direction:	opposite
	Coolant:	EXT
	Please note:	stronger bearing
	Center distance [mm]:	130
<b>8 030 46 108</b>	<b>Radial drilling and milling head ER 32</b>	
	Version:	Special
	Tool drive:	Flat (~DIN 1809)
	Shank size [mm]:	40.00
	Shank type:	VDI
	Tool adaption:	ER 32
	Gear ratio [i]:	1:1
	Torque max [Nm]:	50
	Rotation max [1/min]:	6000
	Rotating direction:	opposite
	Coolant:	EXT
	Center distance [mm]:	100
<b>8 030 46 147</b>	<b>Radial drilling and milling head ER 32 AS IC</b>	
	Weight [kg]:	9.400
	Tool drive:	Flat (~DIN 1809)
	Shank size [mm]:	40.00
	Shank type:	VDI
	Tool adaption:	ER 32
	Gear ratio [i]:	1:2
	Torque max [Nm]:	16
	Rotation max [1/min]:	12000
	Rotating direction:	opposite
	Coolant:	IC
	Center distance [mm]:	130
<b>8 030 46 174</b>	<b>Radial drilling and milling head Weldon 20</b>	
	Weight [kg]:	9.120
	Employment for:	Main spindle
	Tool drive:	Flat (~DIN 1809)
	Shank size [mm]:	40.00
	Shank type:	VDI
	Tool adaption:	Weldon (DIN 1835 b) 20
	Gear ratio [i]:	1:1
	Torque max [Nm]:	50
	Rotation max [1/min]:	6000
	Rotating direction:	opposite
	Coolant:	EXT
	Please note:	stronger bearing

Part-#	Name	
	Center distance [mm]:	130
<b>8 030 46 179</b>	<b>Radial drilling and milling head ER 32 IC</b>	
	Tool drive:	Flat (~DIN 1809)
	Shank size [mm]:	40.00
	Shank type:	VDI
	Tool adaption:	ER 32
	Gear ratio [i]:	2:1
	Torque max [Nm]:	63
	Rotation max [1/min]:	3000
	Rotating direction:	opposite
	Coolant:	IC/Ext
	Pressure max [bar]:	25
	Please note:	stronger bearing
	Center distance [mm]:	130
<b>8 030 46 189</b>	<b>Radial drilling and milling head Weldon 20 IC</b>	
	Employment for:	Main spindle
	Tool drive:	Flat (~DIN 1809)
	Shank size [mm]:	40.00
	Shank type:	VDI
	Tool adaption:	Weldon (DIN 1835 b) 20
	Gear ratio [i]:	1:1
	Torque max [Nm]:	50
	Rotation max [1/min]:	6000
	Rotating direction:	opposite
	Coolant:	IC/Ext
	Pressure max [bar]:	25
	Please note:	stronger bearing
	Center distance [mm]:	130
<b>8 030 46 293</b>	<b>Radial drilling and milling head ER 32 AX UT IC</b>	
	Weight [kg]:	8.820
	Employment for:	Main spindle
	Tool drive:	Flat (~DIN 1809)
	Shank size [mm]:	40.00
	Shank type:	VDI
	Tool adaption:	ER 32 A - u-tec
	Gear ratio [i]:	1:1
	Torque max [Nm]:	50
	Rotation max [1/min]:	6000
	Rotating direction:	opposite
	Coolant:	IC/Ext
	Pressure max [bar]:	140
	Center distance [mm]:	130
<b>8 030 46 296</b>	<b>Radial drilling and milling head ER 32 AX UT</b>	
	Weight [kg]:	8.240
	Employment for:	Main spindle
	Tool drive:	Flat (~DIN 1809)
	Shank size [mm]:	40.00
	Shank type:	VDI
	Tool adaption:	ER 32 A - u-tec
	Gear ratio [i]:	1:1
	Torque max [Nm]:	50
	Rotation max [1/min]:	6000
	Rotating direction:	opposite
	Coolant:	EXT

Part-#	Name	
	Center distance [mm]:	130
<b>8 030 46 298</b>	<b>Radial drilling and milling head ER 32 AX UT</b>	
	Weight [kg]:	9.330
	Tool drive:	Flat (~DIN 1809)
	Shank size [mm]:	40.00
	Shank type:	VDI
	Tool adaption:	ER 32 A - u-tec
	Gear ratio [i]:	1:2
	Torque max [Nm]:	16
	Rotation max [1/min]:	12000
	Rotating direction:	opposite
	Coolant:	EXT
	Please note:	stronger bearing
	Center distance [mm]:	130
<b>8 030 46 305</b>	<b>Radial drilling and milling head ER 32 AX UT</b>	
	Weight [kg]:	8.080
	Employment for:	Sub spindle
	Tool drive:	Flat (~DIN 1809)
	Shank size [mm]:	40.00
	Shank type:	VDI
	Tool adaption:	ER 32 A - u-tec
	Gear ratio [i]:	1:1
	Torque max [Nm]:	50
	Rotation max [1/min]:	6000
	Rotating direction:	opposite
	Coolant:	EXT
	Center distance [mm]:	130
<b>8 030 46 310</b>	<b>Radial drilling and milling head ER 32 AX UT IC</b>	
	Weight [kg]:	9.790
	Tool drive:	Flat (~DIN 1809)
	Shank size [mm]:	40.00
	Shank type:	VDI
	Tool adaption:	ER 32 A - u-tec
	Gear ratio [i]:	1:2
	Torque max [Nm]:	16
	Rotation max [1/min]:	12000
	Rotating direction:	opposite
	Coolant:	IC/Ext
	Pressure max [bar]:	140
	Please note:	stronger bearing
	Center distance [mm]:	130
<b>8 030 46 315</b>	<b>Radial drilling and milling head ER 32 AX UT IC</b>	
	Weight [kg]:	8.700
	Employment for:	Sub spindle
	Tool drive:	Flat (~DIN 1809)
	Shank size [mm]:	40.00
	Shank type:	VDI
	Tool adaption:	ER 32 A - u-tec
	Gear ratio [i]:	1:1
	Torque max [Nm]:	50
	Rotation max [1/min]:	6000
	Rotating direction:	opposite
	Coolant:	IC/Ext
	Pressure max [bar]:	140

Part-#	Name	
	Center distance [mm]:	130
<b>8 030 46 375</b>	<b>Radial drilling and milling head ER 32 AX UT IC</b>	
	Weight [kg]:	9.380
	Employment for:	Main spindle
	Tool drive:	Flat (~DIN 1809)
	Shank size [mm]:	40.00
	Shank type:	VDI
	Tool adaption:	ER 32 A - u-tec
	Gear ratio [i]:	1:1
	Torque max [Nm]:	50
	Rotation max [1/min]:	6000
	Rotating direction:	opposite
	Coolant:	IC/Ext
	Pressure max [bar]:	140
	Please note:	Combi bearing
	Center distance [mm]:	130
<b>8 030 46 388</b>	<b>Radial drilling and milling head HT 4</b>	
	Employment for:	Main spindle
	Tool drive:	Flat (~DIN 1809)
	Shank size [mm]:	40.00
	Shank type:	VDI
	Tool adaption:	HT 4
	Gear ratio [i]:	1:1
	Torque max [Nm]:	50
	Rotation max [1/min]:	6000
	Rotating direction:	opposite
	Coolant:	EXT
	Center distance [mm]:	130
<b>8 030 46 401</b>	<b>Radial drilling and milling head HT 4 IC</b>	
	Employment for:	Main spindle
	Tool drive:	Flat (~DIN 1809)
	Shank size [mm]:	40.00
	Shank type:	VDI
	Tool adaption:	HT 4
	Gear ratio [i]:	1:1
	Torque max [Nm]:	50
	Rotation max [1/min]:	6000
	Rotating direction:	opposite
	Coolant:	IC/Ext
	Pressure max [bar]:	140
	Center distance [mm]:	130
<b>8 030 46 472</b>	<b>Radial drilling and milling head ER 32 AX UT</b>	
	Weight [kg]:	8.370
	Employment for:	Main spindle
	Tool drive:	Flat (~DIN 1809)
	Shank size [mm]:	40.00
	Shank type:	VDI
	Tool adaption:	ER 32 A - u-tec
	Gear ratio [i]:	2:1
	Torque max [Nm]:	63
	Rotation max [1/min]:	4000
	Rotating direction:	opposite
	Coolant:	EXT
	Center distance [mm]:	130

Part-#	Name	
<b>8 030 47 004</b>	<b>Radial drilling and milling head Weldon 25</b>	
	Weight [kg]:	9.500
	Employment for:	Main spindle
	Tool drive:	Flat (~DIN 1809)
	Shank size [mm]:	40.00
	Shank type:	VDI
	Tool adaption:	Weldon (DIN 1835 b) 25
	Gear ratio [i]:	1:1
	Torque max [Nm]:	50
	Rotation max [1/min]:	6000
	Rotating direction:	opposite
	Coolant:	EXT
	Please note:	stronger bearing
	Center distance [mm]:	130
<b>8 030 47 017</b>	<b>Radial drilling and milling head HT 5</b>	
	Weight [kg]:	8.440
	Employment for:	Main spindle
	Tool drive:	Flat (~DIN 1809)
	Shank size [mm]:	40.00
	Shank type:	VDI
	Tool adaption:	HT 5
	Gear ratio [i]:	1:1
	Torque max [Nm]:	50
	Rotation max [1/min]:	6000
	Rotating direction:	opposite
	Coolant:	EXT
	Center distance [mm]:	130
<b>8 030 47 023</b>	<b>Radial drilling and milling head HT 5 IC</b>	
	Weight [kg]:	8.990
	Employment for:	Main spindle
	Tool drive:	Flat (~DIN 1809)
	Shank size [mm]:	40.00
	Shank type:	VDI
	Tool adaption:	HT 5
	Gear ratio [i]:	1:1
	Torque max [Nm]:	50
	Rotation max [1/min]:	6000
	Rotating direction:	opposite
	Coolant:	IC/Ext
	Pressure max [bar]:	140
	Center distance [mm]:	130
<b>8 030 48 001</b>	<b>Radial drilling and milling head HT 6</b>	
	Employment for:	Main spindle
	Tool drive:	Flat (~DIN 1809)
	Shank size [mm]:	40.00
	Shank type:	VDI
	Tool adaption:	HT 6
	Gear ratio [i]:	1:1
	Torque max [Nm]:	50
	Rotation max [1/min]:	6000
	Rotating direction:	opposite
	Coolant:	EXT
	Please note:	stronger bearing
	Center distance [mm]:	130

Part-#	Name	
<b>8 030 48 002</b>	<b>Radial drilling and milling head HT 6 IC</b>	
	Employment for:	Main spindle
	Tool drive:	Flat (~DIN 1809)
	Shank size [mm]:	40.00
	Shank type:	VDI
	Tool adaption:	HT 6
	Gear ratio [i]:	1:1
	Torque max [Nm]:	50
	Rotation max [1/min]:	6000
	Rotating direction:	opposite
	Coolant:	IC/Ext
	Pressure max [bar]:	25
	Please note:	stronger bearing
	Center distance [mm]:	130
<b>8 030 48 013</b>	<b>Radial drilling and milling head Weldon 32</b>	
	Tool drive:	Flat (~DIN 1809)
	Shank size [mm]:	40.00
	Shank type:	VDI
	Tool adaption:	Weldon (DIN 1835 b) 32
	Gear ratio [i]:	2:1
	Torque max [Nm]:	63
	Rotation max [1/min]:	4000
	Rotating direction:	opposite
	Coolant:	EXT
	Please note:	stronger bearing
<b>8 031 44 016</b>	<b>Radial milling head universal arbor 16</b>	
	Employment for:	Main spindle
	Tool drive:	Flat (~DIN 1809)
	Shank size [mm]:	40.00
	Shank type:	VDI
	Tool adaption:	Universal arbor 16
	Gear ratio [i]:	1:1
	Torque max [Nm]:	50
	Rotation max [1/min]:	6000
	Rotating direction:	opposite
	Coolant:	EXT
	Center distance [mm]:	130
<b>8 031 44 017</b>	<b>Radial milling head universal arbor 16</b>	
	Tool drive:	Flat (~DIN 1809)
	Shank size [mm]:	40.00
	Shank type:	VDI
	Tool adaption:	Universal arbor 16
	Gear ratio [i]:	2:1
	Torque max [Nm]:	63
	Rotation max [1/min]:	3000
	Rotating direction:	opposite
	Coolant:	EXT
	Please note:	stronger bearing
	Center distance [mm]:	130

Part-#	Name	
<b>8 031 44 023</b>	<b>Radial milling head universal arbor 16</b>	
	Employment for:	Main spindle
	Tool drive:	Flat (~DIN 1809)
	Shank size [mm]:	40.00
	Shank type:	VDI
	Tool adaption:	Universal arbor 16
	Gear ratio [i]:	1:1
	Torque max [Nm]:	50
	Rotation max [1/min]:	6000
	Rotating direction:	opposite
	Coolant:	EXT
	Please note:	stronger bearing
	Center distance [mm]:	130
<b>8 031 45 006</b>	<b>Radial milling head universal arbor 22</b>	
	Employment for:	Main spindle
	Tool drive:	Flat (~DIN 1809)
	Shank size [mm]:	40.00
	Shank type:	VDI
	Tool adaption:	Universal arbor 22
	Gear ratio [i]:	1:1
	Torque max [Nm]:	50
	Rotation max [1/min]:	6000
	Rotating direction:	opposite
	Coolant:	EXT
	Center distance [mm]:	130
<b>8 031 45 010</b>	<b>Radial milling head universal arbor 22</b>	
	Employment for:	Main spindle
	Tool drive:	Flat (~DIN 1809)
	Shank size [mm]:	40.00
	Shank type:	VDI
	Tool adaption:	Universal arbor 22
	Gear ratio [i]:	2:1
	Torque max [Nm]:	63
	Rotation max [1/min]:	4000
	Rotating direction:	opposite
	Coolant:	EXT
	Center distance [mm]:	130
<b>8 031 45 022</b>	<b>Radial milling head universal arbor 22</b>	
	Weight [kg]:	9.180
	Employment for:	Main spindle
	Tool drive:	Flat (~DIN 1809)
	Shank size [mm]:	40.00
	Shank type:	VDI
	Tool adaption:	Universal arbor 22
	Gear ratio [i]:	2:1
	Torque max [Nm]:	63
	Rotation max [1/min]:	4000
	Rotating direction:	opposite
	Coolant:	EXT
	Please note:	stronger bearing
	Center distance [mm]:	130


Part-#	Name	
<b>8 031 45 023</b>	<b>Radial milling head universal arbor 22</b>	
	Tool drive:	Flat (~DIN 1809)
	Shank size [mm]:	40.00
	Shank type:	VDI
	Tool adaption:	Universal arbor 22
	Gear ratio [i]:	1:1
	Torque max [Nm]:	50
	Rotation max [1/min]:	6000
	Rotating direction:	opposite
	Coolant:	EXT
	Please note:	stronger bearing
	Center distance [mm]:	130
<b>8 031 45 035</b>	<b>Radial polygon head arbor 22</b>	
	Weight [kg]:	9.130
	Employment for:	Main spindle
	Tool drive:	Flat (~DIN 1809)
	Shank size [mm]:	40.00
	Shank type:	VDI
	Tool adaption:	Arbor 22
	Gear ratio [i]:	2:1
	Torque max [Nm]:	63
	Rotation max [1/min]:	4000
	Rotating direction:	opposite
	Coolant:	EXT
	Please note:	stronger bearing
	Center distance [mm]:	130
<b>8 031 45 038</b>	<b>Radial polygon head arbor 22</b>	
	Employment for:	Main spindle
	Tool drive:	Flat (~DIN 1809)
	Shank size [mm]:	40.00
	Shank type:	VDI
	Tool adaption:	Polygon arbor 22
	Gear ratio [i]:	1:1
	Torque max [Nm]:	50
	Rotation max [1/min]:	6000
	Rotating direction:	opposite
	Coolant:	EXT
	Please note:	stronger bearing
	Center distance [mm]:	130
<b>8 033 46 055</b>	<b>Radial drilling and milling head ER 32 AX UT</b>	
	Weight [kg]:	10.620
	Notation:	offset
	Employment for:	Sub spindle
	Tool drive:	Flat (~DIN 1809)
	Shank size [mm]:	40.00
	Shank type:	VDI
	Tool adaption:	ER 32 A - u-tec
	Gear ratio [i]:	1:1
	Torque max [Nm]:	50
	Rotation max [1/min]:	6000
	Rotating direction:	same
	Coolant:	EXT
	Center distance [mm]:	130

Part-#	Name	
<b>8 033 46 120</b>	<b>Radial drilling and milling head ER 32 AX UT IC</b>	
	Weight [kg]:	10.700
	Notation:	offset
	Employment for:	Sub spindle
	Tool drive:	Flat (~DIN 1809)
	Shank size [mm]:	40.00
	Shank type:	VDI
	Tool adaption:	ER 32 A - u-tec
	Gear ratio [i]:	1:1
	Torque max [Nm]:	50
	Rotation max [1/min]:	6000
	Rotating direction:	same
	Coolant:	IC/Ext
	Pressure max [bar]:	140
	Center distance [mm]:	130
<b>8 037 45 006</b>	<b>Woodruff keycutter ER 25 AX</b>	
	Weight [kg]:	8.660
	Tool drive:	Flat (~DIN 1809)
	Shank size [mm]:	40.00
	Shank type:	VDI
	Tool adaption:	ER 25 A
	Gear ratio [i]:	1333:1
	Torque max [Nm]:	32
	Rotation max [1/min]:	4000
	Rotating direction:	opposite
	Coolant:	EXT
<b>8 039 45 019</b>	<b>Radial drilling and milling head ER 25 AX UT</b>	
	Weight [kg]:	9.040
	Employment for:	Main- and sub spindle
	Version:	double spindle
	Tool drive:	Flat (~DIN 1809)
	Shank size [mm]:	40.00
	Shank type:	VDI
	Tool adaption:	ER 25 A - u-tec
	Gear ratio [i]:	1:1
	Torque max [Nm]:	50
	Rotation max [1/min]:	6000
	Rotating direction:	same/opposite
	Coolant:	EXT
	Center distance [mm]:	130
<b>8 039 45 024</b>	<b>Radial drilling and milling head ER 25</b>	
	Weight [kg]:	8.280
	Version:	20° angle
	Tool drive:	Flat (~DIN 1809)
	Shank size [mm]:	40.00
	Shank type:	VDI
	Tool adaption:	ER 25
	Gear ratio [i]:	1:1
	Torque max [Nm]:	50
	Rotation max [1/min]:	6000
	Rotating direction:	opposite
	Coolant:	EXT

Part-#	Name	
<b>8 039 46 042</b>	<b>Radial drilling and milling head ER 32 AX UT</b>	
	Weight [kg]:	9.220
	Employment for:	Main- and sub spindle
	Version:	double spindle
	Tool drive:	Flat (~DIN 1809)
	Shank size [mm]:	40.00
	Shank type:	VDI
	Tool adaption:	ER 32 A - u-tec
	Gear ratio [i]:	1:1
	Torque max [Nm]:	50
	Rotation max [1/min]:	6000
	Rotating direction:	same/opposite
	Coolant:	EXT
	Center distance [mm]:	130
<b>8 039 46 046</b>	<b>Radial drilling and milling head ER 32 AX UT</b>	
	Weight [kg]:	11.580
	Notation:	offset
	Employment for:	Main- and sub spindle
	Version:	double spindle
	Tool drive:	Flat (~DIN 1809)
	Shank size [mm]:	40.00
	Shank type:	VDI
	Tool adaption:	ER 32 A - u-tec
	Gear ratio [i]:	1:1
	Torque max [Nm]:	50
	Rotation max [1/min]:	6000
	Rotating direction:	same/opposite
	Coolant:	EXT
	Center distance [mm]:	130
	Offset [mm]:	50
<b>8 039 46 060</b>	<b>Radial drilling and milling head ER 32 AX UT IC</b>	
	Weight [kg]:	10.690
	Version:	360° turnable; special
	Tool drive:	Flat (~DIN 1809)
	Shank size [mm]:	40.00
	Shank type:	VDI
	Tool adaption:	ER 32 A - u-tec
	Gear ratio [i]:	1:1
	Torque max [Nm]:	50
	Rotation max [1/min]:	6000
	Rotating direction:	opposite
	Coolant:	IC/Ext
	Pressure max [bar]:	140
	Center distance [mm]:	130
<b>8 039 46 090</b>	<b>Radial drilling and milling head ER 32 AX UT IC</b>	
	Notation:	offset
	Employment for:	Main- and sub spindle
	Version:	double spindle
	Tool drive:	Flat (~DIN 1809)
	Shank size [mm]:	40.00
	Shank type:	VDI
	Tool adaption:	ER 32 A - u-tec
	Gear ratio [i]:	1:1
	Torque max [Nm]:	50
	Rotation max [1/min]:	6000

Part-#	Name	
	Rotating direction:	same/opposite
	Coolant:	IC/Ext
	Pressure max [bar]:	25
	Center distance [mm]:	130
	Offset [mm]:	50
<b>8 040 44 042</b>	<b>Universal head ± 90° adjustable ER 16 AX UT IC</b>	
	Weight [kg]:	5.260
	Tool drive:	Flat (~DIN 1809)
	Shank size [mm]:	40.00
	Shank type:	VDI
	Tool adaption:	ER 16 A - u-tec
	Gear ratio [i]:	1:2
	Torque max [Nm]:	12
	Rotation max [1/min]:	12000
	Rotating direction:	opposite
	Coolant:	IC/Ext
	Pressure max [bar]:	140
	Center distance [mm]:	87
<b>8 040 44 043</b>	<b>Universal head ± 90° adjustable ER 16 AX UT</b>	
	Tool drive:	Flat (~DIN 1809)
	Shank size [mm]:	40.00
	Shank type:	VDI
	Tool adaption:	ER 16 A - u-tec
	Gear ratio [i]:	1:2
	Torque max [Nm]:	12
	Rotation max [1/min]:	12000
	Rotating direction:	opposite
	Coolant:	EXT
	Center distance [mm]:	87
<b>8 040 44 044</b>	<b>Universal head ± 90° adjustable ER 16 AX UT</b>	
	Tool drive:	Flat (~DIN 1809)
	Shank size [mm]:	40.00
	Shank type:	VDI
	Tool adaption:	ER 16 A - u-tec
	Gear ratio [i]:	1:1
	Torque max [Nm]:	25
	Rotation max [1/min]:	6000
	Rotating direction:	opposite
	Coolant:	EXT
	Please note:	Note swivel range
	Center distance [mm]:	125
<b>8 040 44 045</b>	<b>Universal head ± 90° adjustable ER 16 AX UT</b>	
	Weight [kg]:	5.220
	Tool drive:	Flat (~DIN 1809)
	Shank size [mm]:	40.00
	Shank type:	VDI
	Tool adaption:	ER 16 A - u-tec
	Gear ratio [i]:	1:1
	Torque max [Nm]:	25
	Rotation max [1/min]:	6000
	Rotating direction:	opposite
	Coolant:	EXT
	Please note:	Note swivel range
	Center distance [mm]:	87

Part-#	Name	
<b>8 040 44 048</b>	<b>Universal head <math>\pm 90^\circ</math> adjustable ER 16 AX UT IC</b>	
	Tool drive:	Flat (~DIN 1809)
	Shank size [mm]:	40.00
	Shank type:	VDI
	Tool adaption:	ER 16 A - u-tec
	Gear ratio [i]:	1:1
	Torque max [Nm]:	25
	Rotation max [1/min]:	6000
	Rotating direction:	opposite
	Coolant:	IC/Ext
	Pressure max [bar]:	140
	Center distance [mm]:	87
<b>8 040 44 093</b>	<b>Universal head <math>\pm 90^\circ</math> adjustable ER 16 AX UT</b>	
	Tool drive:	Flat (~DIN 1809)
	Shank size [mm]:	40.00
	Shank type:	VDI
	Tool adaption:	ER 16 A - u-tec
	Gear ratio [i]:	1:2
	Torque max [Nm]:	12
	Rotation max [1/min]:	12000
	Rotating direction:	opposite
	Coolant:	EXT
	Please note:	Note swivel range
	Center distance [mm]:	125
<b>8 040 44 094</b>	<b>Universal head <math>\pm 90^\circ</math> adjustable ER 16 AX UT IC</b>	
	Tool drive:	Flat (~DIN 1809)
	Shank size [mm]:	40.00
	Shank type:	VDI
	Tool adaption:	ER 16 A - u-tec
	Gear ratio [i]:	1:2
	Torque max [Nm]:	12
	Rotation max [1/min]:	12000
	Rotating direction:	opposite
	Coolant:	IC/Ext
	Pressure max [bar]:	140
	Please note:	Note swivel range
	Center distance [mm]:	125
<b>8 040 45 056</b>	<b>Universal head <math>\pm 90^\circ</math> adjustable ER 25 AX UT</b>	
	Weight [kg]:	5.500
	Tool drive:	Flat (~DIN 1809)
	Shank size [mm]:	40.00
	Shank type:	VDI
	Tool adaption:	ER 25 A - u-tec
	Gear ratio [i]:	1:1
	Torque max [Nm]:	25
	Rotation max [1/min]:	6000
	Rotating direction:	opposite
	Coolant:	EXT
	Please note:	Note swivel range!
	Center distance [mm]:	87

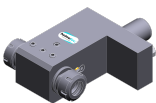
Part-#	Name	
<b>8 040 45 057</b>	<b>Universal head ± 90° adjustable ER 25 AX UT</b>	
	Tool drive:	Flat (~DIN 1809)
	Shank size [mm]:	40.00
	Shank type:	VDI
	Tool adaption:	ER 25 A - u-tec
	Gear ratio [i]:	1:1
	Torque max [Nm]:	25
	Rotation max [1/min]:	6000
	Rotating direction:	opposite
	Coolant:	EXT
	Please note:	Note swivel range!
	Center distance [mm]:	125
<b>8 040 45 066</b>	<b>Universal head ± 90° adjustable ER 25 AX UT IC</b>	
	Weight [kg]:	5.530
	Tool drive:	Flat (~DIN 1809)
	Shank size [mm]:	40.00
	Shank type:	VDI
	Tool adaption:	ER 25 A - u-tec
	Gear ratio [i]:	1:1
	Torque max [Nm]:	25
	Rotation max [1/min]:	6000
	Rotating direction:	opposite
	Coolant:	IC/Ext
	Pressure max [bar]:	140
	Please note:	Note swivel range!
	Center distance [mm]:	87
<b>8 040 45 106</b>	<b>Universal head ± 90° adjustable ER 25 AX UT IC</b>	
	Tool drive:	Flat (~DIN 1809)
	Shank size [mm]:	40.00
	Shank type:	VDI
	Tool adaption:	ER 25 A - u-tec
	Gear ratio [i]:	1:1
	Torque max [Nm]:	25
	Rotation max [1/min]:	6000
	Rotating direction:	opposite
	Coolant:	IC/Ext
	Pressure max [bar]:	140
	Please note:	Note swivel range!
	Center distance [mm]:	125
<b>8 050 45 026</b>	<b>Multispindle drilling head ER 25 AX UT</b>	
	Employment for:	Main- and sub spindle
	Tool drive:	Flat (~DIN 1809)
	Shank size [mm]:	40.00
	Shank type:	VDI
	Tool adaption:	ER 25 A - u-tec
	Gear ratio [i]:	1:1
	Torque max [Nm]:	50/Sp.
	Rotation max [1/min]:	6000
	Rotating direction:	opposite
	Coolant:	EXT
	Please note:	stronger bearing
	Offset [mm]:	50

Part-#	Name	
<b>8 050 45 030</b>	<b>Multispindle drilling head ER 25 AX UT IC</b>	
	Weight [kg]:	6.730
	Notation:	offset
	Version:	2-spindles
	Tool drive:	Flat (~DIN 1809)
	Shank size [mm]:	40.00
	Shank type:	VDI
	Tool adaption:	ER 25 A - u-tec
	Gear ratio [i]:	1:1
	Torque max [Nm]:	50
	Rotation max [1/min]:	6000
	Rotating direction:	opposite
	Coolant:	IC/Ext
	Pressure max [bar]:	140
	Please note:	stronger bearing; not on benachbarten stations
	Offset [mm]:	41,255
<b>8 200 40 004</b>	<b>Tool blank</b>	
	Shank size [mm]:	40.00
	Shank type:	VDI
<b>8 200 41 000</b>	<b>Plug Ø 40x60</b>	
	Weight [kg]:	1.140
	Shank size [mm]:	40.00
	Shank type:	VDI
<b>8 202 40 003</b>	<b>Basic holder for height adjustable adapter</b>	
	Weight [kg]:	3.340
	Shank size [mm]:	40.00
	Shank type:	VDI
	Coolant:	EXT
<b>8 202 40 006</b>	<b>Basic holder longitudinal seat FN 12</b>	
	Weight [kg]:	3.300
	Shank size [mm]:	40.00
	Shank type:	VDI
	Tool adaption:	Interface FN 12
	Coolant:	EXT
<b>8 214 43 004</b>	<b>Cut-off holder SH 32</b>	
	Weight [kg]:	3.480
	Version:	Edge on center of turret
	Shank size [mm]:	40.00
	Shank type:	VDI
	Tool adaption:	Clampshaft SH 32
	Coolant:	EXT
<b>8 214 43 015</b>	<b>Cut-off holder SH 32</b>	
	Weight [kg]:	3.360
	Employment for:	Cut-off tool 32
	Version:	Clampshaft on turret center
	Shank size [mm]:	40.00
	Shank type:	VDI
	Tool adaption:	Clampshaft SH 32
	Coolant:	EXT
	Please note:	demountalbe clampshaft

Part-#	Name	
<b>8 214 43 016</b>	<b>Cut-off holder SH 32</b>	
	Weight [kg]:	3.370
	Employment for:	Cut-off tool 32
	Version:	Clampshaft on turret side
	Shank size [mm]:	40.00
	Shank type:	VDI
	Tool adaption:	Clampshaft SH 32
	Coolant:	EXT
	Please note:	demountalbe clampshaft
<b>8 214 45 000</b>	<b>Universal turning holder sq. 25</b>	
	Weight [kg]:	6.360
	Shank size [mm]:	40.00
	Shank type:	VDI
	Tool adaption:	Sq. 25
	Coolant:	EXT
<b>8 214 45 001</b>	<b>Universal turning holder sq. 25</b>	
	Weight [kg]:	6.320
	Employment for:	Sub spindle
	Shank size [mm]:	40.00
	Shank type:	VDI
	Tool adaption:	Sq. 25
	Coolant:	EXT
<b>8 214 45 003</b>	<b>Universal turning holder sq. 1"</b>	
	Weight [kg]:	6.380
	Shank size [mm]:	40.00
	Shank type:	VDI
	Tool adaption:	Sq. 1" (25,4mm)
	Coolant:	EXT
<b>8 214 45 016</b>	<b>Universal turning holder sq. 25 IC</b>	
	Weight [kg]:	6.420
	Shank size [mm]:	40.00
	Shank type:	VDI
	Tool adaption:	Sq. 25
	Coolant:	IC/Ext
<b>8 230 44 000</b>	<b>Tool holder HSK - A50</b>	
	Weight [kg]:	10.320
	Shank size [mm]:	40.00
	Shank type:	VDI
	Tool adaption:	DIN 69893 A - HSK 50
	Coolant:	IC/Ext
	Center distance [mm]:	140
<b>8 230 46 026</b>	<b>Collet chuck holder ER 32</b>	
	Weight [kg]:	9.240
	Employment for:	Main spindle
	Shank size [mm]:	40.00
	Shank type:	VDI
	Tool adaption:	ER 32
	Coolant:	IC/Ext
	Center distance [mm]:	140


Part-#	Name	
<b>8 230 47 005</b>	<b>Boring bar holder special version Ø 30</b>	
	Weight [kg]:	9.450
	Version:	Special
	Shank type:	VDI
	Tool adaption:	Ø 30
	Coolant:	EXT
	Center distance [mm]:	125
<b>8 230 47 006</b>	<b>Boring bar holder Ø 25</b>	
	Weight [kg]:	9.580
	Shank size [mm]:	40.00
	Shank type:	VDI
	Tool adaption:	Ø 25
	Coolant:	IC/Ext
	Center distance [mm]:	140
<b>8 230 47 015</b>	<b>Tool holder HT 5</b>	
	Weight [kg]:	9.280
	Employment for:	Main spindle
	Shank size [mm]:	40.00
	Shank type:	VDI
	Tool adaption:	HT 5
	Coolant:	IC/Ext
	Center distance [mm]:	140
<b>8 230 48 007</b>	<b>Boring bar holder Ø 32</b>	
	Weight [kg]:	9.360
	Shank size [mm]:	40.00
	Shank type:	VDI
	Tool adaption:	Ø 32
	Coolant:	IC/Ext
	Please note:	Offset dimension to center 71 mm
	Center distance [mm]:	140
<b>8 230 48 025</b>	<b>Boring bar holder Ø 1 1/2"</b>	
	Weight [kg]:	9.100
	Shank size [mm]:	40.00
	Shank type:	VDI
	Tool adaption:	Ø 1 1/2" (38,1mm)
	Coolant:	IC/Ext
	Center distance [mm]:	140
<b>8 230 49 001</b>	<b>Boring bar holder Ø 40</b>	
	Weight [kg]:	9.160
	Shank size [mm]:	40.00
	Shank type:	VDI
	Tool adaption:	Ø 40
	Coolant:	IC/Ext
	Center distance [mm]:	140
<b>8 230 49 006</b>	<b>Boring bar holder Ø 40</b>	
	Weight [kg]:	9.080
	Notation:	offset
	Employment for:	Sub spindle
	Version:	Special
	Shank size [mm]:	40.00
	Shank type:	VDI

Part-#	Name	
	Tool adaption:	Ø 40
	Coolant:	IC/Ext
	Center distance [mm]:	140
<b>8 230 49 027</b>	<b>Boring bar holder Ø 50</b>	
	Version:	Special
	Shank size [mm]:	40.00
	Shank type:	VDI
	Tool adaption:	Ø 50
	Coolant:	IC/Ext
	Please note:	Official tool length is exceeded
	Center distance [mm]:	140
<b>8 230 49 054</b>	<b>Boring bar holder Ø 40</b>	
	Weight [kg]:	9.860
	Notation:	offset
	Shank size [mm]:	40.00
	Shank type:	VDI
	Tool adaption:	Ø 40
	Coolant:	IC/Ext
	Please note:	Offset dimension to center 9 mm
	Center distance [mm]:	140
<b>8 234 45 002</b>	<b>Combi facing holder sq. 25</b>	
	Weight [kg]:	10.780
	Employment for:	Main- and sub spindle
	Shank size [mm]:	40.00
	Shank type:	VDI
	Tool adaption:	Sq. 25
	Coolant:	EXT
<b>8 234 45 006</b>	<b>Combi facing holder sq. 25</b>	
	Version:	Special
	Shank size [mm]:	40.00
	Shank type:	VDI
	Tool adaption:	Sq. 25
	Coolant:	EXT
	Please note:	Machine: Mazak, QT Nexus 200 II M - 12
<b>8 239 44 000</b>	<b>Double collet chuck holder ER 20 M</b>	
	Weight [kg]:	9.640
	Employment for:	Main spindle
	Shank size [mm]:	40.00
	Shank type:	VDI
	Tool adaption:	ER 20 M
	Coolant:	IC/Ext
	Center distance [mm]:	126/155
<b>8 239 46 003</b>	<b>Double collet chuck holder ER 32 IC</b>	
	Weight [kg]:	10.200
	Employment for:	Main- and sub spindle
	Shank size [mm]:	40.00
	Shank type:	VDI
	Tool adaption:	ER 32
	Coolant:	IC/Ext
	Center distance [mm]:	140



Part-#	Name	
<b>8 239 46 026</b>	<b>Double boring bar holder Ø 20 IC/Ext</b>	
	Weight [kg]:	11.380
	Employment for:	Main- and sub spindle
	Shank size [mm]:	40.00
	Shank type:	VDI
	Tool adaption:	Ø 20
	Coolant:	IC/Ext
	Center distance [mm]:	140
<b>8 239 47 000</b>	<b>Double boring bar holder Ø 25</b>	
	Weight [kg]:	10.920
	Employment for:	Main- and sub spindle
	Shank size [mm]:	40.00
	Shank type:	VDI
	Tool adaption:	Ø 25
	Coolant:	EXT
	Center distance [mm]:	140
<b>8 239 47 001</b>	<b>Double boring bar holder Ø 25 IC/Ext</b>	
	Weight [kg]:	10.800
	Employment for:	Main- and sub spindle
	Shank size [mm]:	40.00
	Shank type:	VDI
	Tool adaption:	Ø 25
	Coolant:	IC/Ext
	Center distance [mm]:	140
<b>8 239 47 002</b>	<b>Double tool holder HT 5</b>	
	Weight [kg]:	9.440
	Employment for:	Main- and sub spindle
	Shank size [mm]:	40.00
	Shank type:	VDI
	Tool adaption:	HT 5
	Coolant:	IC/Ext
	Center distance [mm]:	140
<b>8 239 47 024</b>	<b>Double boring bar holder Ø 1"</b>	
	Weight [kg]:	10.770
	Employment for:	Main- and sub spindle
	Shank size [mm]:	40.00
	Shank type:	VDI
	Tool adaption:	Ø 1" (25,4mm)
	Coolant:	EXT
	Center distance [mm]:	140
<b>8 239 48 002</b>	<b>Double boring bar holder Ø 32</b>	
	Weight [kg]:	11.060
	Employment for:	Main- and sub spindle
	Shank size [mm]:	40.00
	Shank type:	VDI
	Tool adaption:	Ø 32
	Coolant:	EXT
	Center distance [mm]:	140

Part-#	Name	
<b>8 239 48 017</b>	<b>Double boring bar holder Ø 32 IC/Ext</b>	
	Weight [kg]:	11.050
	Employment for:	Main- and sub spindle
	Shank size [mm]:	40.00
	Shank type:	VDI
	Tool adaption:	Ø 32
	Coolant:	IC/Ext
	Center distance [mm]:	140
<b>8 239 49 000</b>	<b>Double boring bar holder Ø 40</b>	
	Weight [kg]:	9.160
	Employment for:	Main- and sub spindle
	Shank size [mm]:	40.00
	Shank type:	VDI
	Tool adaption:	Ø 40
	Coolant:	EXT
	Center distance [mm]:	140
<b>8 239 49 018</b>	<b>Double boring bar holder Ø 40 IC/Ext</b>	
	Weight [kg]:	10.650
	Employment for:	Main- and sub spindle
	Shank size [mm]:	40.00
	Shank type:	VDI
	Tool adaption:	Ø 40
	Coolant:	IC/Ext
	Center distance [mm]:	140
<b>8 251 45 000</b>	<b>Combi double turning holder sq. 25</b>	
	Weight [kg]:	10.400
	Shank size [mm]:	40.00
	Shank type:	VDI
	Tool adaption:	Sq. 25
	Coolant:	EXT
<b>8 251 45 014</b>	<b>Combi double turning holder sq. 25 IC</b>	
	Weight [kg]:	10.130
	Shank size [mm]:	40.00
	Shank type:	VDI
	Tool adaption:	Sq. 25
	Coolant:	IC/Ext
<b>8 253 47 005</b>	<b>Double boring bar holder Ø 25</b>	
	Weight [kg]:	10.700
	Employment for:	Main- and sub spindle
	Shank size [mm]:	40.00
	Shank type:	VDI
	Tool adaption:	Ø 25
	Coolant:	EXT
	Center distance [mm]:	105/148
<b>8 253 47 007</b>	<b>Double boring bar holder Ø 1"</b>	
	Weight [kg]:	10.700
	Employment for:	Main- and sub spindle
	Shank size [mm]:	40.00
	Shank type:	VDI
	Tool adaption:	Ø 1" (25,4mm)
	Coolant:	EXT

Part-#	Name	
	Center distance [mm]:	105/148
<b>8 259 42 000</b>	<b>Multiple turning holder sq. 25</b>	
	Weight [kg]:	7.020
	Employment for:	Main spindle
	Version:	Y-axes offset
	Shank size [mm]:	40.00
	Shank type:	VDI
	Tool adaption:	Sq. 25
		Sq. 25
	Coolant:	EXT
<b>8 259 45 001</b>	<b>Multiple turning holder 4x sq. 25</b>	
	Weight [kg]:	10.950
	Employment for:	Main- and sub spindle
	Version:	Y-axes offset
	Shank size [mm]:	40.00
	Shank type:	VDI
	Tool adaption:	Sq. 25
		Sq. 25
		Sq. 25
		Sq. 25
	Coolant:	EXT
<b>8 259 45 005</b>	<b>Multiple turning holder 4x sq. 1"</b>	
	Weight [kg]:	10.930
	Employment for:	Main- and sub spindle
	Version:	Y-axes offset
	Shank size [mm]:	40.00
	Shank type:	VDI
	Tool adaption:	Sq. 1" (25,4mm)
		Sq. 1" (25,4mm)
		Sq. 1" (25,4mm)
		Sq. 1" (25,4mm)
	Coolant:	EXT
<b>8 259 45 009</b>	<b>Multiple turning holder 4x sq. 25 IC</b>	
	Weight [kg]:	10.600
	Employment for:	Main- and sub spindle
	Version:	Y-axes offset
	Shank size [mm]:	40.00
	Shank type:	VDI
	Tool adaption:	Sq. 25
		Sq. 25
		Sq. 25
		Sq. 25
	Coolant:	IC/Ext
<b>8 320 43 008</b>	<b>Cut-off holder, height adjustable SH 32 IC</b>	
	Weight [kg]:	3.930
	Shank size [mm]:	40.00
	Shank type:	VDI
	Tool adaption:	Clampshaft SH 32
	Coolant:	IC/Ext
	Pressure max [bar]:	70



● heimatec overseas branches

○ global representations of heimatec

**heimatec**<sup>®</sup>

**heimatec GmbH**  
Präzisionswerkzeuge  
Carl-Benz-Str. 4  
77871 Renchen  
Germany

T +49 7843 9466 0  
[www.heimatec.com](http://www.heimatec.com)  
[info@heimatec.com](mailto:info@heimatec.com)

Please find the contact details of our worldwide trading partners on our website:  
<https://heimatec.com/business-partners>