

TOPSELLER -
many more available!

Live Tools

heimatec®

DN Solutions

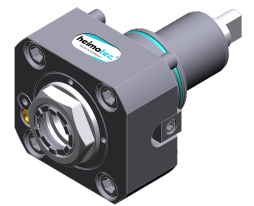
Puma SMX 3100 ST

Part-#	Tool adaption	Rotation max [1/min]	Gear ratio	Coolant	Pressure max.	Center distance
Axial drilling and milling head						
8 010 66 143	ER 32 A - u-tec	12.000	1:1	IC/Ext	100 bar	--
8 010 66 145	ER 32 A - u-tec	12.000	1:1	EXT	140 bar	--
Radial drilling and milling head						
8 030 66 269	ER 32 A - u-tec	10.000	1:1	EXT	--	100 mm
8 030 66 270	ER 32 A - u-tec	10.000	1:1	IC/Ext	140 bar	100 mm
Radial drilling and milling head, double spindle						
8 039 66 021	ER 32 A - u-tec	10.000	1:1	EXT	--	100 mm
Universal head, offset						
8 043 65 000	ER 25 A - u-tec	6.000	1:1	EXT	--	69 mm
8 043 65 004	ER 25 A - u-tec	6.000	1:1	IC/Ext	140 bar	69 mm

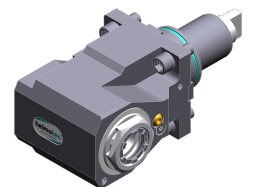
Illustrations similar.



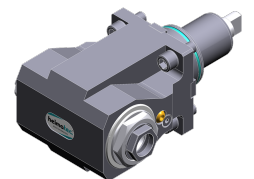
8 010 66 143



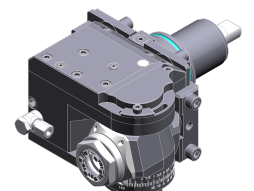
8 010 66 145



8 030 66 269



8 039 66 021



8 043 65 000

TOPSELLER -
many more available!

Static Tools

heimatec®

DN Solutions

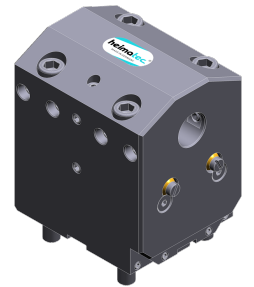
Puma SMX 3100 ST

Part-#	Tool adaption	Coolant	Pressure max.	Center distance
Universal turning holder				
8 224 15 005	Sq. 25	EXT	80 bar	--
8 224 15 006	Sq. 25	EXT	80 bar	--
8 224 15 052	Sq. 25	IC/Ext	100 bar	--
8 224 15 053	Sq. 25	IC/Ext	100 bar	--
Boring bar holder				
8 240 17 050	Ø 25	IC/Ext	80 bar	100 mm
8 240 18 049	Ø 32	IC/Ext	80 bar	100 mm
8 240 19 043	Ø 40	IC/Ext	80 bar	100 mm
8 240 19 051	Ø 50	IC/Ext	80 bar	100 mm
Combi facing holder				
8 244 15 005	Sq. 25	EXT	80 bar	--
Double turning holder				
8 251 15 003	Sq. 25	EXT	80 bar	--
8 251 15 046	Sq. 25	IC/Ext	100 bar	--
Cut-off holder, height adjustable				
8 320 13 005	Clampshaft SH 32	IC/Ext	70 bar	--

Illustrations similar.



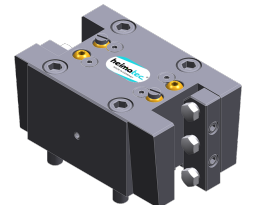
8 224 15 005



8 240 17 050



8 244 15 005



8 251 15 003