

Nakamura
Super NTX S/W



High-tech from heimatec - heimatec - Tools and systems for productive turning and milling

heimatec belongs to the international technology and quality leaders for precision tools and specializes in the development and production of high-precision static and live tools for all CNC lathes, CNC turn-/mill machines and CNC machining centers.

The range of products* spans from static BMT and VDI tool holders, live tools up to highly complex customer-specific individual solutions. heimatec, headquartered in Renchen, has a own subsidiary in Asia and India and numerous representatives as well as trading partners all over the world.

*OUR PRODCUTS

Static tool holders

Live tool units

Precision tools

Tools for turning and machining centres

Tools for swiss type lathes

Tool changing and uick-change systems

Tool systems for gear production

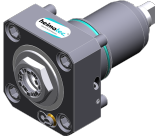
Digital tool management

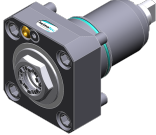
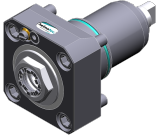
This catalogue, including all its parts, is protected by copyright. Any use outside the restricted limitations of the Copyright Act without the consent of heimatec is inadmissible and liable to prosecution. This applies in particular to duplication, translation, microfilming and storage and processing in electronic systems.

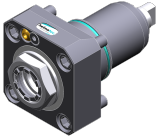

heimatec GmbH reserves the right to make technical changes at any time without giving prior notice. This applies in particular to adjustments at any time to meet new or changed international standards, or in case of further developments of our products or manufacturing processes.

The current version of our General Terms and Conditions can be found on our website.

| Part-# | Name | |
|---------------------|---|------------------------|
| 8 010 64 003 | Axial drilling and milling head Weldon 12 IC | |
| | Tool drive: | Flat (~DIN 1809) |
| | Shank size [mm]: | 65.00 |
| | Shank type: | BMT |
| | Tool adaption: | Weldon (DIN 1835 b) 12 |
| | Gear ratio [i]: | 1:1 |
| | Torque max [Nm]: | 50 |
| | Rotation max [1/min]: | 6000 |
| | Rotating direction: | same |
| | Coolant: | IC/Ext |
| | Pressure max [bar]: | 25 |
| 8 010 64 005 | Axial drilling and milling head Weldon 12 | |
| | Tool drive: | Flat (~DIN 1809) |
| | Shank size [mm]: | 65.00 |
| | Shank type: | BMT |
| | Tool adaption: | Weldon (DIN 1835 b) 12 |
| | Gear ratio [i]: | 1:1 |
| | Torque max [Nm]: | 50 |
| | Rotation max [1/min]: | 6000 |
| | Rotating direction: | same |
| | Coolant: | EXT |
| 8 010 64 006 | Axial drilling and milling head Weldon 14 IC | |
| | Tool drive: | Flat (~DIN 1809) |
| | Shank size [mm]: | 65.00 |
| | Shank type: | BMT |
| | Tool adaption: | Weldon (DIN 1835 b) 14 |
| | Gear ratio [i]: | 1:1 |
| | Torque max [Nm]: | 50 |
| | Rotation max [1/min]: | 6000 |
| | Rotating direction: | same |
| | Coolant: | IC/Ext |
| 8 010 65 005 | Axial drilling and milling head Weldon 16 | |
| | Weight [kg]: | 2.920 |
| | Tool drive: | Flat (~DIN 1809) |
| | Shank size [mm]: | 65.00 |
| | Shank type: | BMT |
| | Tool adaption: | Weldon (DIN 1835 b) 16 |
| | Gear ratio [i]: | 1:1 |
| | Torque max [Nm]: | 50 |
| | Rotation max [1/min]: | 6000 |
| | Rotating direction: | same |
| | Coolant: | EXT |
| 8 010 65 006 | Axial drilling and milling head Weldon 16 IC | |
| | Tool drive: | Flat (~DIN 1809) |
| | Shank size [mm]: | 65.00 |
| | Shank type: | BMT |
| | Tool adaption: | Weldon (DIN 1835 b) 16 |
| | Gear ratio [i]: | 1:1 |
| | Torque max [Nm]: | 50 |
| | Rotation max [1/min]: | 6000 |
| | Rotating direction: | same |
| | Coolant: | IC/Ext |
| | Pressure max [bar]: | 25 |

| Part-# | Name | |
|---|---|--------------------------------|
| 8 010 65 017 | Axial drilling and milling head ER 25 AX UT IC | |
| | Weight [kg]: | 2.800 |
| | Tool drive: | Flat (~DIN 1809) |
| | Shank size [mm]: | 65.00 |
| | Shank type: | BMT |
| | Tool adaption: | ER 25 A - u-tec |
| | Gear ratio [i]: | 1:1 |
| | Torque max [Nm]: | 50 |
| | Rotation max [1/min]: | 6000 |
| | Rotating direction: | same |
| | Coolant: | IC/Ext |
| | Pressure max [bar]: | 25 |
| | Please note: | stronger bearing |
| 8 010 65 020 | Axial drilling and milling head ER 25 AX UT IC | |
| | Weight [kg]: | 2.700 |
| | Tool drive: | Flat (~DIN 1809) |
| | Shank size [mm]: | 65.00 |
| | Shank type: | BMT |
| | Tool adaption: | ER 25 A - u-tec |
| | Gear ratio [i]: | 1:1 |
| | Torque max [Nm]: | 50 |
| | Rotation max [1/min]: | 6000 |
| | Rotating direction: | same |
| | Coolant: | IC/Ext |
| | Pressure max [bar]: | 25 |
| 8 010 65 021 | Axial drilling and milling head ER 25 AX UT | |
| | Weight [kg]: | 2.670 |
| | Tool drive: | Flat (~DIN 1809) |
| | Shank size [mm]: | 65.00 |
| | Shank type: | BMT |
| | Tool adaption: | ER 25 A - u-tec |
| | Gear ratio [i]: | 1:1 |
| | Torque max [Nm]: | 50 |
| | Rotation max [1/min]: | 6000 |
| | Rotating direction: | same |
| | Coolant: | EXT |
| 8 010 65 022 | Axial milling and drill holder ER 25 AX UT IC | |
|  | Tool drive: | Flat (~DIN 1809) |
| | Shank size [mm]: | 65.00 |
| | Shank type: | BMT |
| | Tool adaption: | ER 25 A - u-tec |
| | Gear ratio [i]: | 1:1 |
| | Torque max [Nm]: | 50 |
| | Rotation max [1/min]: | 5000 |
| | Rotating direction: | same |
| | Coolant: | IC/Ext |
| | Pressure max [bar]: | 100 |
| | Please note: | Combi bearing; dryrun possible |

| Part-# | Name | |
|---|-----------------------|---|
|  | 8 010 65 023 | Axial milling and drill holder ER 25 AX UT |
| | Weight [kg]: | 3.950 |
| | Tool drive: | Flat (~DIN 1809) |
| | Shank size [mm]: | 65.00 |
| | Shank type: | BMT |
| | Tool adaption: | ER 25 A - u-tec |
| | Gear ratio [i]: | 1:1 |
| | Torque max [Nm]: | 50 |
| | Rotation max [1/min]: | 5000 |
| | Rotating direction: | same |
| | Coolant: | EXT |
| Please note: | Combi bearing | |
|  | 8 010 65 038 | Axial drilling and milling head ER 25 AX UT IC |
| | Tool drive: | Flat (~DIN 1809) |
| | Shank size [mm]: | 65.00 |
| | Shank type: | BMT |
| | Tool adaption: | ER 25 A - u-tec |
| | Gear ratio [i]: | 1:1 |
| | Torque max [Nm]: | 50 |
| | Rotation max [1/min]: | 5000 |
| | Rotating direction: | same |
| | Coolant: | IC/Ext |
| | Pressure max [bar]: | 100 |
| Please note: | Dryrun possible | |
| | 8 010 66 002 | Axial drilling and milling head ER 32 IC |
| | Weight [kg]: | 2.920 |
| | Tool drive: | Flat (~DIN 1809) |
| | Shank size [mm]: | 65.00 |
| | Shank type: | BMT |
| | Tool adaption: | ER 32 |
| | Gear ratio [i]: | 1:1 |
| | Torque max [Nm]: | 50 |
| | Rotation max [1/min]: | 6000 |
| | Rotating direction: | same |
| | Coolant: | IC/Ext |
| Pressure max [bar]: | 25 | |
| | 8 010 66 003 | Axial drilling and milling head ER 32 |
| | Weight [kg]: | 2.880 |
| | Tool drive: | Flat (~DIN 1809) |
| | Shank size [mm]: | 65.00 |
| | Shank type: | BMT |
| | Tool adaption: | ER 32 |
| | Gear ratio [i]: | 1:1 |
| | Torque max [Nm]: | 50 |
| | Rotation max [1/min]: | 6000 |
| | Rotating direction: | same |
| | Coolant: | EXT |

| Part-# | Name | |
|---|--|------------------------------------|
| 8 010 66 017 | Axial drilling and milling head HT 4 | |
| | Weight [kg]: | 2.860 |
| | Tool drive: | Flat (~DIN 1809) |
| | Shank size [mm]: | 65.00 |
| | Shank type: | BMT |
| | Tool adaption: | HT 4 |
| | Gear ratio [i]: | 1:1 |
| | Torque max [Nm]: | 50 |
| | Rotation max [1/min]: | 6000 |
| | Rotating direction: | same |
| | Coolant: | EXT |
| | Please note: | stronger bearing |
| 8 010 66 043 | Axial drilling and milling head ER 32 IC | |
| | Weight [kg]: | 3.000 |
| | Tool drive: | Flat (~DIN 1809) |
| | Shank size [mm]: | 65.00 |
| | Shank type: | BMT |
| | Tool adaption: | ER 32 |
| | Gear ratio [i]: | 1:1 |
| | Torque max [Nm]: | 50 |
| | Rotation max [1/min]: | 6000 |
| | Rotating direction: | same |
| | Coolant: | IC/Ext |
| | Pressure max [bar]: | 25 |
| | Please note: | stronger bearing |
| 8 010 66 050 | Axial milling and drill holder ER 32 AX UT | |
|  | Weight [kg]: | 3.920 |
| | Tool drive: | Flat (~DIN 1809) |
| | Shank size [mm]: | 65.00 |
| | Shank type: | BMT |
| | Tool adaption: | ER 32 A - u-tec |
| | Gear ratio [i]: | 1:1 |
| | Torque max [Nm]: | 50 |
| | Rotation max [1/min]: | 5000 |
| | Rotating direction: | same |
| | Coolant: | EXT |
| | Please note: | Combi bearing |
| 8 010 66 067 | Axial milling and drill holder ER 32 AX UT IC | |
|  | Weight [kg]: | 4.030 |
| | Tool drive: | Flat (~DIN 1809) |
| | Shank size [mm]: | 65.00 |
| | Shank type: | BMT |
| | Tool adaption: | ER 32 A - u-tec |
| | Gear ratio [i]: | 1:1 |
| | Torque max [Nm]: | 50 |
| | Rotation max [1/min]: | 5000 |
| | Rotating direction: | same |
| | Coolant: | IC/Ext |
| | Pressure max [bar]: | 100 |
| | Please note: | Combi bearing; Trockenauf possible |

| Part-# | Name |
|--------|------|
|--------|------|

8 010 66 126



Axial drilling and milling head ER 32 AX UT

| | |
|-----------------------|------------------|
| Weight [kg]: | 4.080 |
| Tool drive: | Flat (~DIN 1809) |
| Shank size [mm]: | 65.00 |
| Shank type: | BMT |
| Tool adaption: | ER 32 A - u-tec |
| Gear ratio [i]: | 1:1 |
| Torque max [Nm]: | 50 |
| Rotation max [1/min]: | 6000 |
| Rotating direction: | same |
| Coolant: | EXT |

8 010 66 127



Axial drilling and milling head ER 32 AX UT IC

| | |
|-----------------------|------------------|
| Weight [kg]: | 4.000 |
| Tool drive: | Flat (~DIN 1809) |
| Shank size [mm]: | 65.00 |
| Shank type: | BMT |
| Tool adaption: | ER 32 A - u-tec |
| Gear ratio [i]: | 1:1 |
| Torque max [Nm]: | 50 |
| Rotation max [1/min]: | 6000 |
| Rotating direction: | same |
| Coolant: | IC/Ext |
| Pressure max [bar]: | 100 |
| Please note: | Dryrun possible |

8 010 67 013

Axial drilling and milling head HT 5

| | |
|-----------------------|------------------|
| Weight [kg]: | 2.960 |
| Tool drive: | Flat (~DIN 1809) |
| Shank size [mm]: | 65.00 |
| Shank type: | BMT |
| Tool adaption: | HT 5 |
| Gear ratio [i]: | 1:1 |
| Torque max [Nm]: | 50 |
| Rotation max [1/min]: | 6000 |
| Rotating direction: | same |
| Coolant: | EXT |
| Please note: | stronger bearing |


8 010 67 016

Axial drilling and milling head HT 5 IC


| | |
|-----------------------|------------------|
| Weight [kg]: | 2.990 |
| Tool drive: | Flat (~DIN 1809) |
| Shank size [mm]: | 65.00 |
| Shank type: | BMT |
| Tool adaption: | HT 5 |
| Gear ratio [i]: | 1:1 |
| Torque max [Nm]: | 50 |
| Rotation max [1/min]: | 6000 |
| Rotating direction: | same |
| Coolant: | IC/Ext |
| Pressure max [bar]: | 25 |
| Please note: | stronger bearing |

| Part-# | Name | |
|---------------------|---|------------------------|
| 8 010 67 024 | Axial drilling and milling head HT 5 IC | |
| | Tool drive: | Flat (~DIN 1809) |
| | Shank size [mm]: | 65.00 |
| | Shank type: | BMT |
| | Tool adaption: | HT 5 |
| | Gear ratio [i]: | 1:1 |
| | Torque max [Nm]: | 50 |
| | Rotation max [1/min]: | 6000 |
| | Rotating direction: | same |
| | Coolant: | IC/Ext |
| | Pressure max [bar]: | 25 |
| 8 010 67 029 | Axial drilling and milling head HT 5 IC | |
| | Weight [kg]: | 2.960 |
| | Tool drive: | Flat (~DIN 1809) |
| | Shank size [mm]: | 65.00 |
| | Shank type: | BMT |
| | Tool adaption: | HT 5 |
| | Gear ratio [i]: | 1:1 |
| | Torque max [Nm]: | 50 |
| | Rotation max [1/min]: | 6000 |
| | Rotating direction: | same |
| | Coolant: | IC/Ext |
| | Pressure max [bar]: | 70 |
| | Please note: | High pressure version |
| 8 010 67 054 | Axial drilling and milling head ER 40 AX UT | |
| | Tool drive: | Flat (~DIN 1809) |
| | Shank size [mm]: | 65.00 |
| | Shank type: | BMT |
| | Tool adaption: | ER 40 A - u-tec |
| | Gear ratio [i]: | 1:1 |
| | Torque max [Nm]: | 50 |
| | Rotation max [1/min]: | 5000 |
| | Rotating direction: | same |
| | Coolant: | EXT |
| | Please note: | Combi bearing |
| 8 010 67 062 | Axial drilling and milling head Weldon 25 IC | |
| | Weight [kg]: | 4.140 |
| | Tool drive: | Flat (~DIN 1809) |
| | Shank size [mm]: | 65.00 |
| | Shank type: | BMT |
| | Tool adaption: | Weldon (DIN 1835 b) 25 |
| | Gear ratio [i]: | 1:1 |
| | Torque max [Nm]: | 50 |
| | Rotation max [1/min]: | 5000 |
| | Rotating direction: | same |
| | Coolant: | IC/Ext |
| | Pressure max [bar]: | 25 |
| | Please note: | Combi bearing |


| Part-# | Name |
|---------------------|---|
| 8 010 67 127 | Axial drilling and milling head ER 40 AX UT IC |
| | Weight [kg]: 4.550 |
| | Tool drive: Flat (~DIN 1809) |
| | Shank size [mm]: 65.00 |
| | Shank type: BMT |
| | Tool adaption: ER 40 A - u-tec |
| | Gear ratio [i]: 1:1 |
| | Torque max [Nm]: 50 |
| | Rotation max [1/min]: 5000 |
| | Rotating direction: same |
| | Coolant: IC/Ext |
| | Pressure max [bar]: 25 |
| | Please note: Combi bearing |
| 8 010 67 128 | Axial drilling and milling head ER 40 AX UT |
| | Weight [kg]: 4.620 |
| | Tool drive: Flat (~DIN 1809) |
| | Shank size [mm]: 65.00 |
| | Shank type: BMT |
| | Tool adaption: ER 40 A - u-tec |
| | Gear ratio [i]: 1:1 |
| | Torque max [Nm]: 50 |
| | Rotation max [1/min]: 12000 |
| | Rotating direction: same |
| | Coolant: EXT |
| | Pressure max [bar]: 140 |
| 8 011 64 003 | Axial milling head universal arbor 3/4" |
| | Weight [kg]: 3.800 |
| | Tool drive: Flat (~DIN 1809) |
| | Shank size [mm]: 65.00 |
| | Shank type: BMT |
| | Tool adaption: Universal arbor 3/4" (19,05mm) |
| | Gear ratio [i]: 1:1 |
| | Torque max [Nm]: 50 |
| | Rotation max [1/min]: 6000 |
| | Rotating direction: same |
| | Coolant: EXT |
| | Please note: Taper roller bearings |
| 8 011 64 004 | Axial milling head universal arbor 16 |
| | Weight [kg]: 4.110 |
| | Tool drive: Flat (~DIN 1809) |
| | Shank size [mm]: 65.00 |
| | Shank type: BMT |
| | Tool adaption: Universal arbor 16 |
| | Gear ratio [i]: 1:1 |
| | Torque max [Nm]: 50 |
| | Rotation max [1/min]: 5000 |
| | Rotating direction: same |
| | Coolant: EXT |
| | Please note: Combi bearing |

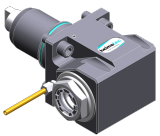

| Part-# | Name | | |
|---|---------------------|--|--------------------------------|
|  | 8 011 64 006 | Axial milling head universal arbor 3/4" | |
| | | Weight [kg]: | 4.060 |
| | | Tool drive: | Flat (~DIN 1809) |
| | | Shank size [mm]: | 65.00 |
| | | Shank type: | BMT |
| | | Tool adaption: | Universal arbor 3/4" (19,05mm) |
| | | Gear ratio [i]: | 1:1 |
| | | Torque max [Nm]: | 50 |
| | | Rotation max [1/min]: | 6000 |
| | | Rotating direction: | same |
| | | Coolant: | EXT |
| | Please note: | Combi bearing; without cutter retaining screw | |
| | 8 011 65 013 | Axial milling head universal arbor 22 | |
| | | Weight [kg]: | 4.210 |
| | | Tool drive: | Flat (~DIN 1809) |
| | | Shank size [mm]: | 65.00 |
| | | Shank type: | BMT |
| | | Tool adaption: | Universal arbor 22 |
| | | Gear ratio [i]: | 1:1 |
| | | Torque max [Nm]: | 50 |
| | | Rotation max [1/min]: | 5000 |
| | | Rotating direction: | same |
| | | Coolant: | EXT |
| | Please note: | Combi bearing | |
| | 8 011 66 004 | Axial milling head universal arbor 27 | |
| | | Tool drive: | Flat (~DIN 1809) |
| | | Shank size [mm]: | 65.00 |
| | | Shank type: | BMT |
| | | Tool adaption: | Universal arbor 27 |
| | | Gear ratio [i]: | 1:1 |
| | | Torque max [Nm]: | 50 |
| | | Rotation max [1/min]: | 6000 |
| | | Rotating direction: | same |
| | | Coolant: | EXT |
| | | Please note: | Taper roller bearings |
| | 8 011 66 009 | Axial milling head universal arbor 27 | |
| | | Tool drive: | Flat (~DIN 1809) |
| | | Shank size [mm]: | 65.00 |
| | | Shank type: | BMT |
| | | Tool adaption: | Universal arbor 27 |
| | | Gear ratio [i]: | 1:1 |
| | | Torque max [Nm]: | 50 |
| | | Rotation max [1/min]: | 5000 |
| | | Rotating direction: | same |
| | | Coolant: | EXT |
| | | Please note: | Combi bearing |
| | 8 011 67 002 | Axial milling head universal arbor 32 | |
| | | Tool drive: | Flat (~DIN 1809) |
| | | Shank size [mm]: | 65.00 |
| | | Shank type: | BMT |
| | | Tool adaption: | Universal arbor 32 |
| | | Torque max [Nm]: | 50 |

| Part-# | Name | |
|---------------------|--|-------------------------|
| | Rotation max [1/min]: | 4000 |
| | Rotating direction: | same |
| | Coolant: | EXT |
| | Please note: | Taper roller bearings |
| 8 013 64 002 | Axial drilling and milling head ER 16 AX UT | |
| | Weight [kg]: | 3.500 |
| | Tool drive: | Flat (~DIN 1809) |
| | Shank size [mm]: | 65.00 |
| | Shank type: | BMT |
| | Tool adaption: | ER 16 A - u-tec |
| | Gear ratio [i]: | 1:4 |
| | Torque max [Nm]: | 5 |
| | Rotation max [1/min]: | 24000 |
| | Rotating direction: | same |
| | Coolant: | EXT |
| 8 013 65 002 | Axial drilling and milling head ER 25 AC IC | |
| | Tool drive: | Flat (~DIN 1809) |
| | Shank size [mm]: | 65.00 |
| | Shank type: | BMT |
| | Tool adaption: | ER 25 A |
| | Gear ratio [i]: | 2:1 |
| | Torque max [Nm]: | 80 |
| | Rotation max [1/min]: | 2000 |
| | Rotating direction: | same |
| | Coolant: | IC/Ext |
| | Pressure max [bar]: | 25 |
| 8 014 65 000 | Axial milling head universal arbor 22 | |
| | Weight [kg]: | 7.900 |
| | Tool drive: | Flat (~DIN 1809) |
| | Shank size [mm]: | 65.00 |
| | Shank type: | BMT |
| | Tool adaption: | Universal arbor 22 |
| | Gear ratio [i]: | 2:1 |
| | Torque max [Nm]: | 80 |
| | Rotation max [1/min]: | 2000 |
| | Rotating direction: | same |
| | Coolant: | EXT |
| 8 019 65 006 | Axial drilling and milling head ER 25 AX UT | |
| | Weight [kg]: | 6.820 |
| | Notation: | offset; 180° reversible |
| | Tool drive: | Flat (~DIN 1809) |
| | Shank size [mm]: | 65.00 |
| | Shank type: | BMT |
| | Tool adaption: | ER 25 A - u-tec |
| | Gear ratio [i]: | 1:3 |
| | Torque max [Nm]: | 12 |
| | Rotation max [1/min]: | 15000 |
| | Rotating direction: | opposite |
| | Coolant: | EXT |
| | Please note: | stronger bearing |
| | Offset [mm]: | 50 |

| Part-# | Name | |
|---|-----------------------|---|
|  | 8 019 65 011 | Axial drilling and milling head ER 25 AX UT IC |
| | Weight [kg]: | 8.080 |
| | Notation: | offset; 180° reversible |
| | Tool drive: | Flat (~DIN 1809) |
| | Shank size [mm]: | 65.00 |
| | Shank type: | BMT |
| | Tool adaption: | ER 25 A - u-tec |
| | Gear ratio [i]: | 1:1 |
| | Torque max [Nm]: | 50 |
| | Rotation max [1/min]: | 12000 |
| | Rotating direction: | opposite |
| | Coolant: | IC/Ext |
| | Pressure max [bar]: | 140 |
| | Please note: | stronger bearing |
| Offset [mm]: | 50 | |
| | 8 030 62 000 | Radial drilling and milling head Weldon 6 |
| | Weight [kg]: | 8.160 |
| | Tool drive: | Flat (~DIN 1809) |
| | Shank size [mm]: | 65.00 |
| | Shank type: | BMT |
| | Tool adaption: | Weldon (DIN 1835 b) 6 |
| | Gear ratio [i]: | 1:3 |
| | Torque max [Nm]: | 8 |
| | Rotation max [1/min]: | 15000 |
| | Rotating direction: | opposite |
| | Coolant: | EXT |
| Center distance [mm]: | 65 | |
| | 8 030 63 000 | Radial drilling and milling head Weldon 8 IC |
| | Notation: | 180° reversible |
| | Tool drive: | Flat (~DIN 1809) |
| | Shank size [mm]: | 65.00 |
| | Shank type: | BMT |
| | Tool adaption: | Weldon (DIN 1835 b) 8 |
| | Gear ratio [i]: | 1:1 |
| | Torque max [Nm]: | 50 |
| | Rotation max [1/min]: | 6000 |
| | Rotating direction: | opposite |
| | Coolant: | IC/Ext |
| Pressure max [bar]: | 25 | |
| Center distance [mm]: | 65 | |
| | 8 030 64 014 | Radial drilling and milling head Weldon 10 IC |
| | Notation: | 180° reversible |
| | Tool drive: | Flat (~DIN 1809) |
| | Shank size [mm]: | 65.00 |
| | Shank type: | BMT |
| | Tool adaption: | Weldon (DIN 1835 b) 10 |
| | Gear ratio [i]: | 1:1 |
| | Torque max [Nm]: | 50 |
| | Rotation max [1/min]: | 6000 |
| | Rotating direction: | opposite |
| | Coolant: | IC/Ext |
| Pressure max [bar]: | 140 | |
| Please note: | Combi bearing | |
| Center distance [mm]: | 65 | |

| Part-# | Name | |
|---------------------|---|------------------------|
| 8 030 64 022 | Radial drilling and milling head Weldon 12 | |
| | Notation: | 180° reversible |
| | Tool drive: | Flat (~DIN 1809) |
| | Shank size [mm]: | 65.00 |
| | Shank type: | BMT |
| | Tool adaption: | Weldon (DIN 1835 b) 12 |
| | Gear ratio [i]: | 1:2 |
| | Torque max [Nm]: | 16 |
| | Rotation max [1/min]: | 12000 |
| | Rotating direction: | same |
| | Coolant: | EXT |
| | Please note: | stronger bearing |
| | Center distance [mm]: | 80 |
| 8 030 65 010 | Radial drilling and milling head ER 25 | |
| | Notation: | 180° reversible |
| | Tool drive: | Flat (~DIN 1809) |
| | Shank size [mm]: | 65.00 |
| | Shank type: | BMT |
| | Tool adaption: | ER 25 |
| | Gear ratio [i]: | 1:3 |
| | Torque max [Nm]: | 12 |
| | Rotation max [1/min]: | 12000 |
| | Rotating direction: | same |
| | Coolant: | EXT |
| | Please note: | stronger bearing |
| | Center distance [mm]: | 75 |
| 8 030 65 014 | Radial drilling and milling head ER 25 | |
| | Weight [kg]: | 8.200 |
| | Tool drive: | Flat (~DIN 1809) |
| | Shank size [mm]: | 65.00 |
| | Shank type: | BMT |
| | Tool adaption: | ER 25 |
| | Gear ratio [i]: | 1:3 |
| | Torque max [Nm]: | 8 |
| | Rotation max [1/min]: | 15000 |
| | Rotating direction: | opposite |
| | Coolant: | EXT |
| | Center distance [mm]: | 65 |
| 8 030 65 015 | Radial drilling and milling head ER 25 IC | |
| | Weight [kg]: | 7.720 |
| | Notation: | 180° reversible |
| | Tool drive: | Flat (~DIN 1809) |
| | Shank size [mm]: | 65.00 |
| | Shank type: | BMT |
| | Tool adaption: | ER 25 |
| | Gear ratio [i]: | 1:3 |
| | Torque max [Nm]: | 8 |
| | Rotation max [1/min]: | 15000 |
| | Rotating direction: | opposite |
| | Coolant: | IC/Ext |
| | Pressure max [bar]: | 25 |
| | Center distance [mm]: | 65 |

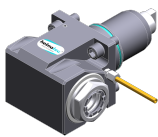
| Part-# | Name | |
|---|--|------------------------|
| 8 030 65 018 | Radial drilling and milling head ER 25 IC | |
| | Notation: | 180° reversible |
| | Tool drive: | Flat (~DIN 1809) |
| | Shank size [mm]: | 65.00 |
| | Shank type: | BMT |
| | Tool adaption: | ER 25 |
| | Gear ratio [i]: | 1:1 |
| | Torque max [Nm]: | 50 |
| | Rotation max [1/min]: | 6000 |
| | Rotating direction: | opposite |
| | Coolant: | IC/Ext |
| | Pressure max [bar]: | 70 |
| | Please note: | High pressure version |
| | Center distance [mm]: | 65 |
| 8 030 65 020 | Radial drilling and milling head ER 25 AX UT IC | |
|  | Weight [kg]: | 7.900 |
| | Notation: | 180° reversible |
| | Tool drive: | Flat (~DIN 1809) |
| | Shank size [mm]: | 65.00 |
| | Shank type: | BMT |
| | Tool adaption: | ER 25 A - u-tec |
| | Gear ratio [i]: | 1:2 |
| | Torque max [Nm]: | 16 |
| | Rotation max [1/min]: | 12000 |
| | Rotating direction: | same |
| | Coolant: | IC/Ext |
| | Pressure max [bar]: | 140 |
| | Please note: | stronger bearing |
| | Center distance [mm]: | 80 |
| 8 030 65 025 | Radial drilling and milling head ER 25 IC | |
| | Weight [kg]: | 8.630 |
| | Notation: | 180° reversible |
| | Tool drive: | Flat (~DIN 1809) |
| | Shank size [mm]: | 65.00 |
| | Shank type: | BMT |
| | Tool adaption: | ER 25 |
| | Gear ratio [i]: | 1:3 |
| | Torque max [Nm]: | 12 |
| | Rotation max [1/min]: | 12000 |
| | Rotating direction: | same |
| | Coolant: | IC |
| | Pressure max [bar]: | 140 |
| | Please note: | stronger bearing |
| | Center distance [mm]: | 75 |
| 8 030 65 046 | Radial drilling and milling head Weldon 16 | |
| | Weight [kg]: | 8.060 |
| | Notation: | 180° reversible |
| | Tool drive: | Flat (~DIN 1809) |
| | Shank size [mm]: | 65.00 |
| | Shank type: | BMT |
| | Tool adaption: | Weldon (DIN 1835 b) 16 |
| | Gear ratio [i]: | 1:1 |
| | Torque max [Nm]: | 50 |
| | Rotation max [1/min]: | 6000 |
| | Rotating direction: | opposite |

| Part-# | Name | |
|---|--|------------------------|
| | Coolant: | EXT |
| | Please note: | Combi bearing |
| | Center distance [mm]: | 65 |
| 8 030 66 001 | Radial drilling and milling head Weldon 20 IC | |
| | Weight [kg]: | 8.400 |
| | Notation: | 180° reversible |
| | Tool drive: | Flat (~DIN 1809) |
| | Shank size [mm]: | 65.00 |
| | Shank type: | BMT |
| | Tool adaption: | Weldon (DIN 1835 b) 20 |
| | Gear ratio [i]: | 1:1 |
| | Torque max [Nm]: | 50 |
| | Rotation max [1/min]: | 6000 |
| | Rotating direction: | opposite |
| | Coolant: | IC/Ext |
| | Pressure max [bar]: | 25 |
| | Please note: | stronger bearing |
| | Center distance [mm]: | 65 |
| 8 030 66 004 | Radial drilling and milling head Weldon 20 IC | |
| | Notation: | 180° reversible |
| | Tool drive: | Flat (~DIN 1809) |
| | Shank size [mm]: | 65.00 |
| | Shank type: | BMT |
| | Tool adaption: | Weldon (DIN 1835 b) 20 |
| | Gear ratio [i]: | 1,625:1 |
| | Torque max [Nm]: | 63 |
| | Rotation max [1/min]: | 6000 |
| | Rotating direction: | opposite |
| | Coolant: | IC/Ext |
| | Pressure max [bar]: | 25 |
| | Please note: | stronger bearing |
| | Center distance [mm]: | 65 |
| 8 030 66 078 | Angle-mill- and drill holder ER 32 AX UT | |
|  | Weight [kg]: | 8.340 |
| | Notation: | 180° reversible |
| | Tool drive: | Flat (~DIN 1809) |
| | Shank size [mm]: | 65.00 |
| | Shank type: | BMT |
| | Tool adaption: | ER 32 A - u-tec |
| | Gear ratio [i]: | 1:1 |
| | Torque max [Nm]: | 50 |
| | Rotation max [1/min]: | 6000 |
| | Rotating direction: | opposite |
| | Coolant: | EXT |
| | Please note: | Combi bearing |
| | Center distance [mm]: | 65 |
| 8 030 66 090 | Angle-mill- and drill holder ER 32 AX UT IC | |
|  | Weight [kg]: | 8.240 |
| | Notation: | 180° reversible |
| | Tool drive: | Flat (~DIN 1809) |
| | Shank size [mm]: | 65.00 |
| | Shank type: | BMT |
| | Tool adaption: | ER 32 A - u-tec |

| Part-# | Name |
|--------|------|
|--------|------|

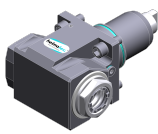
Gear ratio [i]: 1:1
 Torque max [Nm]: 50
 Rotation max [1/min]: 6000
 Rotating direction: opposite
 Coolant: IC/Ext
 Pressure max [bar]: 140
 Please note: Combi bearing
 Center distance [mm]: 65

8 030 66 103 Radial drilling and milling head ER 32 AX UT



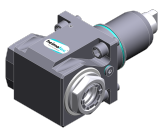
Notation: 180° reversible
 Tool drive: Flat (~DIN 1809)
 Shank size [mm]: 65.00
 Shank type: BMT
 Tool adaption: ER 32 A - u-tec
 Gear ratio [i]: 2:1
 Torque max [Nm]: 63
 Rotation max [1/min]: 3000
 Rotating direction: opposite
 Coolant: EXT
 Please note: Combi bearing
 Center distance [mm]: 65

8 030 66 127 Radial drilling and milling head ER 32 AX UT IC



Notation: 180° reversible
 Tool drive: Flat (~DIN 1809)
 Shank size [mm]: 65.00
 Shank type: BMT
 Tool adaption: ER 32 A - u-tec
 Gear ratio [i]: 2:1
 Torque max [Nm]: 63
 Rotation max [1/min]: 3000
 Rotating direction: opposite
 Coolant: IC/Ext
 Pressure max [bar]: 140
 Please note: Combi bearing
 Center distance [mm]: 65

8 030 66 257 Radial drilling and milling head ER 32 AX UT IC



Weight [kg]: 7.800
 Notation: 180° reversible
 Tool drive: Flat (~DIN 1809)
 Shank size [mm]: 65.00
 Shank type: BMT
 Tool adaption: ER 32 A - u-tec
 Gear ratio [i]: 1:1
 Torque max [Nm]: 50
 Rotation max [1/min]: 12000
 Rotating direction: opposite
 Coolant: IC/Ext
 Pressure max [bar]: 140
 Center distance [mm]: 65

| Part-# | Name |
|--------|------|
|--------|------|

8 030 66 259



Radial drilling and milling head ER 32 AX UT IC

| | |
|-----------------------|------------------|
| Weight [kg]: | 11.100 |
| Notation: | 180° reversible |
| Tool drive: | Flat (~DIN 1809) |
| Shank size [mm]: | 65.00 |
| Shank type: | BMT |
| Tool adaption: | ER 32 A - u-tec |
| Gear ratio [i]: | 1:1 |
| Torque max [Nm]: | 50 |
| Rotation max [1/min]: | 6000 |
| Rotating direction: | opposite |
| Coolant: | IC/Ext |
| Pressure max [bar]: | 140 |
| Please note: | Combi bearing |
| Center distance [mm]: | 100 |

8 030 66 263



Radial drilling and milling head ER 32 AX UT

| | |
|-----------------------|------------------|
| Weight [kg]: | 7.600 |
| Notation: | 180° reversible |
| Tool drive: | Flat (~DIN 1809) |
| Shank size [mm]: | 65.00 |
| Shank type: | BMT |
| Tool adaption: | ER 32 A - u-tec |
| Gear ratio [i]: | 1:1 |
| Torque max [Nm]: | 50 |
| Rotation max [1/min]: | 12000 |
| Rotating direction: | opposite |
| Coolant: | EXT |
| Center distance [mm]: | 65 |

8 030 67 003

Radial drilling and milling head Weldon 25 IC

| | |
|-----------------------|--------------------------------|
| Weight [kg]: | 8.720 |
| Notation: | 180° reversible |
| Version: | Special |
| Tool drive: | Flat (~DIN 1809) |
| Shank size [mm]: | 65.00 |
| Shank type: | BMT |
| Tool adaption: | Weldon (DIN 1835 b) 25 special |
| Gear ratio [i]: | 1:1 |
| Torque max [Nm]: | 50 |
| Rotation max [1/min]: | 6000 |
| Rotating direction: | opposite |
| Coolant: | IC/Ext |
| Pressure max [bar]: | 25 |
| Please note: | stronger bearing |
| Center distance [mm]: | 65 |

8 030 67 007

Radial drilling and milling head ER 40

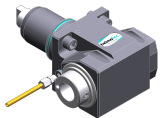
| | |
|-----------------------|------------------|
| Weight [kg]: | 7.300 |
| Notation: | 180° reversible |
| Tool drive: | Flat (~DIN 1809) |
| Shank size [mm]: | 65.00 |
| Shank type: | BMT |
| Tool adaption: | ER 40 |
| Gear ratio [i]: | 1,625:1 |
| Torque max [Nm]: | 63 |
| Rotation max [1/min]: | 4000 |

| Part-# | Name | |
|---------------------|--|------------------------|
| | Rotating direction: | opposite |
| | Coolant: | EXT |
| | Center distance [mm]: | 65 |
| 8 030 67 008 | Radial drilling and milling head ER 40 | |
| | Weight [kg]: | 7.260 |
| | Notation: | 180° reversible |
| | Tool drive: | Flat (~DIN 1809) |
| | Shank size [mm]: | 65.00 |
| | Shank type: | BMT |
| | Tool adaption: | ER 40 |
| | Gear ratio [i]: | 1:1 |
| | Torque max [Nm]: | 50 |
| | Rotation max [1/min]: | 6000 |
| | Rotating direction: | opposite |
| | Coolant: | EXT |
| | Center distance [mm]: | 65 |
| 8 030 67 027 | Radial drilling and milling head Weldon 25 IC | |
| | Notation: | 180° reversible |
| | Tool drive: | Flat (~DIN 1809) |
| | Shank size [mm]: | 65.00 |
| | Shank type: | BMT |
| | Tool adaption: | Weldon (DIN 1835 b) 25 |
| | Gear ratio [i]: | 1:1 |
| | Torque max [Nm]: | 50 |
| | Rotation max [1/min]: | 6000 |
| | Rotating direction: | opposite |
| | Coolant: | IC/Ext |
| | Pressure max [bar]: | 140 |
| | Please note: | stronger bearing |
| | Center distance [mm]: | 65 |
| 8 030 67 028 | Radial drilling and milling head HT 5 IC | |
| | Weight [kg]: | 9.200 |
| | Notation: | 180° reversible |
| | Version: | Special |
| | Tool drive: | Flat (~DIN 1809) |
| | Shank size [mm]: | 65.00 |
| | Shank type: | BMT |
| | Tool adaption: | HT 5 |
| | Gear ratio [i]: | 1:1 |
| | Torque max [Nm]: | 50 |
| | Rotation max [1/min]: | 6000 |
| | Rotating direction: | opposite |
| | Coolant: | IC/Ext |
| | Pressure max [bar]: | 25 |
| | Center distance [mm]: | 91 |
| 8 030 67 037 | Radial drilling and milling head Weldon 25 IC | |
| | Notation: | 180° reversible |
| | Tool drive: | Flat (~DIN 1809) |
| | Shank size [mm]: | 65.00 |
| | Shank type: | BMT |
| | Tool adaption: | Weldon (DIN 1835 b) 25 |
| | Gear ratio [i]: | 2:1 |
| | Torque max [Nm]: | 63 |
| | Rotation max [1/min]: | 3000 |

| Part-# | Name |
|--------|------|
|--------|------|

Rotating direction: opposite
Coolant: IC/Ext
Pressure max [bar]: 25
Please note: stronger bearing
Center distance [mm]: 65

8 030 67 088



Radial drilling and milling head HT 5 IC
Weight [kg]: 8.420
Notation: 180° reversible
Tool drive: Flat (~DIN 1809)
Shank size [mm]: 65.00
Shank type: BMT
Tool adaption: HT 5
Gear ratio [i]: 1:1
Torque max [Nm]: 50
Rotation max [1/min]: 6000
Rotating direction: opposite
Coolant: IC/Ext
Pressure max [bar]: 140
Please note: Combi bearing
Center distance [mm]: 65

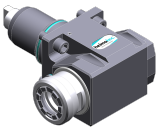
8 030 67 120

Radial drilling and milling head Weldon 25
Notation: 180° reversible
Tool drive: Flat (~DIN 1809)
Shank size [mm]: 65.00
Shank type: BMT
Tool adaption: Weldon (DIN 1835 b) 25
Gear ratio [i]: 2:1
Torque max [Nm]: 63
Rotation max [1/min]: 3000
Rotating direction: opposite
Coolant: EXT
Please note: Combi bearing
Center distance [mm]: 65

8 030 67 140



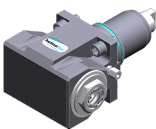
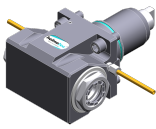
Radial drilling and milling head ER 40 AX UT
Notation: 180° reversible
Tool drive: Flat (~DIN 1809)
Shank size [mm]: 65.00
Shank type: BMT
Tool adaption: ER 40 A - u-tec
Gear ratio [i]: 1:1
Torque max [Nm]: 50
Rotation max [1/min]: 12000
Rotating direction: opposite
Coolant: EXT
Pressure max [bar]: 140
Please note: stronger bearing
Center distance [mm]: 65


| Part-# | Name |
|---|---|
|  | 8 030 67 156 Radial drilling and milling head ER 40 AX UT IC Notation: 180° reversible Tool drive: Flat (~DIN 1809) Shank size [mm]: 65.00 Shank type: BMT Tool adaption: ER 40 A - u-tec Gear ratio [i]: 1:1 Torque max [Nm]: 50 Rotation max [1/min]: 6000 Rotating direction: opposite Coolant: IC/Ext Pressure max [bar]: 140 Please note: stronger bearing Center distance [mm]: 65 |
| | 8 037 62 001 Radial disk mill head arbor 10 Weight [kg]: 12.940 Notation: 180° reversible Version: ± 10° turnable Tool drive: Flat (~DIN 1809) Shank size [mm]: 65.00 Shank type: BMT Tool adaption: Arbor 10 Gear ratio [i]: 2:1 Torque max [Nm]: 63 Rotation max [1/min]: 3000 Rotating direction: same Coolant: no Please note: strong version with stronger bearing Center distance [mm]: 87,5 |
| | 8 037 63 005 Radial disk mill head arbor 13 Weight [kg]: 12.880 Notation: 180° reversible Version: ± 10° turnable Tool drive: Flat (~DIN 1809) Shank size [mm]: 65.00 Shank type: BMT Tool adaption: Arbor 13 Gear ratio [i]: 2:1 Torque max [Nm]: 63 Rotation max [1/min]: 3000 Rotating direction: same Coolant: no Please note: strong version with stronger bearing Center distance [mm]: 87,5 |
| | 8 037 64 004 Radial disk mill head arbor 16 Weight [kg]: 12.840 Notation: 180° reversible Version: ± 10° turnable Tool drive: Flat (~DIN 1809) Shank size [mm]: 65.00 Shank type: BMT Tool adaption: Arbor 16 Gear ratio [i]: 2:1 Torque max [Nm]: 63 Rotation max [1/min]: 3000 |

| Part-# | Name | |
|---------------------|---|--------------------------------------|
| | Rotating direction: | same |
| | Coolant: | no |
| | Please note: | strong version; stronger bearing |
| | Center distance [mm]: | 87,5 |
| 8 037 64 007 | Radial disk mill head arbor 3/4" | |
| | Weight [kg]: | 13.300 |
| | Version: | Special |
| | Tool drive: | Flat (~DIN 1809) |
| | Shank size [mm]: | 65.00 |
| | Shank type: | BMT |
| | Tool adaption: | Arbor 3/4" (19,05mm) |
| | Gear ratio [i]: | 2:1 |
| | Torque max [Nm]: | 63 |
| | Rotation max [1/min]: | 3000 |
| | Rotating direction: | same |
| | Coolant: | no |
| | Please note: | stronger bearing |
| | Center distance [mm]: | 87,5 |
| 8 037 65 000 | Woodruff keycutter ER 25 AS | |
| | Weight [kg]: | 7.800 |
| | Tool drive: | Flat (~DIN 1809) |
| | Shank size [mm]: | 65.00 |
| | Shank type: | BMT |
| | Tool adaption: | ER 25 A |
| | Gear ratio [i]: | 1,333:1 |
| | Torque max [Nm]: | 32 |
| | Rotation max [1/min]: | 2250 |
| | Rotating direction: | opposite |
| | Coolant: | EXT |
| 8 037 65 002 | Radial disk mill head arbor 22 | |
| | Weight [kg]: | 13.420 |
| | Notation: | 180° reversible |
| | Version: | ± 10° turnable |
| | Tool drive: | Flat (~DIN 1809) |
| | Shank size [mm]: | 65.00 |
| | Shank type: | BMT |
| | Tool adaption: | Arbor 22 |
| | Gear ratio [i]: | 2:1 |
| | Torque max [Nm]: | 63 |
| | Rotation max [1/min]: | 3000 |
| | Rotating direction: | same |
| | Coolant: | no |
| | Please note: | strong version with stronger bearing |
| | Center distance [mm]: | 87,5 |
| 8 037 65 005 | Radial disk mill head arbor 22 | |
| | Weight [kg]: | 16.620 |
| | Version: | Special |
| | Tool drive: | Flat (~DIN 1809) |
| | Shank size [mm]: | 65.00 |
| | Shank type: | BMT |
| | Tool adaption: | Arbor 22 |
| | Gear ratio [i]: | 2:1 |
| | Torque max [Nm]: | 63 |
| | Rotation max [1/min]: | 3000 |

| Part-# | Name | |
|---------------------|---|----------------------------------|
| | Rotating direction: | same |
| | Coolant: | EXT |
| | Please note: | stronger bearing |
| 8 037 65 030 | Radial disk mill head arbor 22 | |
| | Weight [kg]: | 14.790 |
| | Version: | ± 30° turnable |
| | Tool drive: | Flat (~DIN 1809) |
| | Shank size [mm]: | 65.00 |
| | Shank type: | BMT |
| | Tool adaption: | Arbor 22 |
| | Gear ratio [i]: | 2:1 |
| | Torque max [Nm]: | 63 |
| | Rotation max [1/min]: | 3000 |
| | Rotating direction: | same |
| | Coolant: | no |
| | Please note: | strong version; stronger bearing |
| | Center distance [mm]: | 98 |
| 8 037 66 000 | Radial disk mill head arbor 27 | |
| | Weight [kg]: | 13.260 |
| | Tool drive: | Flat (~DIN 1809) |
| | Shank size [mm]: | 65.00 |
| | Shank type: | BMT |
| | Tool adaption: | Arbor 27 |
| | Gear ratio [i]: | 2:1 |
| | Torque max [Nm]: | 63 |
| | Rotation max [1/min]: | 3000 |
| | Rotating direction: | same |
| | Coolant: | no |
| | Please note: | strong version; stronger bearing |
| | Center distance [mm]: | 87,5 |
| 8 039 64 001 | Radial drilling and milling head ER 16 | |
| | Weight [kg]: | 7.800 |
| | Notation: | 60° angle |
| | Tool drive: | Flat (~DIN 1809) |
| | Shank size [mm]: | 65.00 |
| | Shank type: | BMT |
| | Tool adaption: | ER 16 |
| | Gear ratio [i]: | 1:1 |
| | Torque max [Nm]: | 16 |
| | Rotation max [1/min]: | 6000 |
| | Rotating direction: | opposite |
| | Coolant: | EXT |
| 8 039 64 002 | Radial drilling and milling head ER 16 | |
| | Weight [kg]: | 7.620 |
| | Notation: | 30° angle |
| | Tool drive: | Flat (~DIN 1809) |
| | Shank size [mm]: | 65.00 |
| | Shank type: | BMT |
| | Tool adaption: | ER 16 |
| | Gear ratio [i]: | 1:1 |
| | Torque max [Nm]: | 16 |
| | Rotation max [1/min]: | 6000 |
| | Rotating direction: | opposite |
| | Coolant: | EXT |

| Part-# | Name |
|--------|------|
|--------|------|

| | | |
|---|---|--|
| 8 039 64 003 | Radial drilling and milling head ER 16 | 7.520 45° angle Flat (~DIN 1809) 65.00 BMT ER 16 1:1 16 6000 opposite EXT |
| 8 039 65 014 | Radial drilling and milling head ER 25 AX UT | 8.760 180° reversible Main- and sub spindle double spindle Flat (~DIN 1809) 65.00 BMT ER 25 A - u-tec 1:1 50 12000 same/opposite EXT stronger bearing 65 |
|  | | |
| 8 039 66 004 | Radial milling head universal arbor 27 | 9.480 100° angle Flat (~DIN 1809) 65.00 BMT Universal arbor 27 1,438:1 40 4000 opposite EXT stronger bearing |
| 8 039 66 028 | Radial drilling and milling head ER 32 AX UT | 8.600 180° reversible Main- and sub spindle double spindle Flat (~DIN 1809) 65.00 BMT ER 32 A - u-tec 1:1 50 12000 same/opposite |
|  | | |

| Part-# | Name | |
|---|---|-------------------------|
| | Coolant: | EXT |
| | Please note: | stronger bearing |
| | Center distance [mm]: | 65 |
| 8 040 64 000 | Universal head ± 90° adjustable ER 16 | |
| | Weight [kg]: | 4.800 |
| | Tool drive: | Flat (~DIN 1809) |
| | Shank size [mm]: | 65.00 |
| | Shank type: | BMT |
| | Tool adaption: | ER 16 |
| | Gear ratio [i]: | 1:1 |
| | Torque max [Nm]: | 10 |
| | Rotation max [1/min]: | 5000 |
| | Rotating direction: | same |
| | Coolant: | EXT |
| | Center distance [mm]: | 64 |
| 8 043 64 003 | Universal head +100°/-20° adj. ER16 AX UT | |
| | Weight [kg]: | 8.910 |
| | Notation: | offset; 180° reversible |
| | Tool drive: | Flat (~DIN 1809) |
| | Shank size [mm]: | 65.00 |
| | Shank type: | BMT |
| | Tool adaption: | ER 16 A - u-tec |
| | Gear ratio [i]: | 1:1 |
| | Torque max [Nm]: | 25 |
| | Rotation max [1/min]: | 6000 |
| | Rotating direction: | opposite |
| | Coolant: | EXT |
| | Center distance [mm]: | 60 |
| | Offset [mm]: | 35 |
| 8 043 64 007 | Universal head +145°/-25° adj. ER16AX UTIK | |
|  | Weight [kg]: | 8.680 |
| | Notation: | offset; 180° reversible |
| | Tool drive: | Flat (~DIN 1809) |
| | Shank size [mm]: | 65.00 |
| | Shank type: | BMT |
| | Tool adaption: | ER 16 A - u-tec |
| | Gear ratio [i]: | 1:1 |
| | Torque max [Nm]: | 25 |
| | Rotation max [1/min]: | 6000 |
| | Rotating direction: | same |
| | Coolant: | IC/Ext |
| | Pressure max [bar]: | 140 |
| | Center distance [mm]: | 60 |
| | Offset [mm]: | 60 |
| 8 043 64 012 | Universal head +100°/-20° adj. ER16AX UTIK | |
| | Weight [kg]: | 8.960 |
| | Notation: | offset; 180° reversible |
| | Tool drive: | Flat (~DIN 1809) |
| | Shank size [mm]: | 65.00 |
| | Shank type: | BMT |
| | Tool adaption: | ER 16 A - u-tec |
| | Gear ratio [i]: | 1:2 |
| | Torque max [Nm]: | 12 |

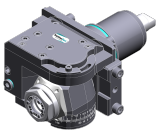
| Part-# | Name |
|--------|------|
|--------|------|

Rotation max [1/min]: 12000
 Rotating direction: opposite
 Coolant: IC/Ext
 Pressure max [bar]: 25
 Center distance [mm]: 60
 Offset [mm]: 35

8 043 64 026 Universal head +100°/-20° adj. ER16AX UTIK

Weight [kg]: 8.920
 Notation: offset; 180° reversible
 Tool drive: Flat (~DIN 1809)
 Shank size [mm]: 65.00
 Shank type: BMT
 Tool adaption: ER 16 A - u-tec
 Gear ratio [i]: 1:1
 Torque max [Nm]: 25
 Rotation max [1/min]: 6000
 Rotating direction: opposite
 Coolant: IC/Ext
 Pressure max [bar]: 25
 Center distance [mm]: 60
 Offset [mm]: 35

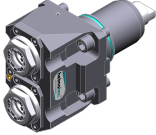

8 043 65 002 Universal head +100°/-20° adj. ER25 AX UT



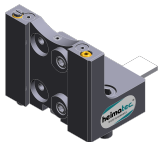
Weight [kg]: 8.870
 Notation: offset; 180° reversible
 Tool drive: Flat (~DIN 1809)
 Shank size [mm]: 65.00
 Shank type: BMT
 Tool adaption: ER 25 A - u-tec
 Gear ratio [i]: 1:1
 Torque max [Nm]: 25
 Rotation max [1/min]: 6000
 Rotating direction: opposite
 Coolant: EXT
 Please note: stronger bearing
 Center distance [mm]: 60
 Offset [mm]: 35

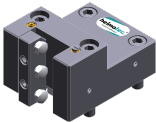

8 043 65 011 Universal head +100°/-20° adj. ER25AX UTIK

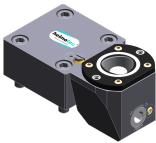
Weight [kg]: 9.170
 Notation: offset; 180° reversible
 Tool drive: Flat (~DIN 1809)
 Shank size [mm]: 65.00
 Shank type: BMT
 Tool adaption: ER 25 A - u-tec
 Gear ratio [i]: 1:1
 Torque max [Nm]: 25
 Rotation max [1/min]: 6000
 Rotating direction: opposite
 Coolant: IC/Ext
 Pressure max [bar]: 25
 Please note: stronger bearing
 Center distance [mm]: 60
 Offset [mm]: 35

| Part-# | Name | | |
|---|---|--|--|
|  | 8 050 65 007 Multispindle drilling head ER 25 AX UT | Weight [kg]: 6.740 Notation: 180° reversible Version: 2-spindles Tool drive: Flat (~DIN 1809) Shank size [mm]: 65.00 Shank type: BMT Tool adaption: ER 25 A - u-tec Gear ratio [i]: 1:1 Torque max [Nm]: 32/Sp. Rotation max [1/min]: 6000 Rotating direction: opposite Coolant: EXT Please note: stronger bearing | |
| |  | 8 068 64 000 Radial whirling unit HW 46 | Notation: 180° reversible Tool drive: Flat (~DIN 1809) Shank size [mm]: 65.00 Shank type: BMT Tool adaption: HW 46 Gear ratio [i]: 1:1 Torque max [Nm]: 16 Rotation max [1/min]: 8000 Rotating direction: same Coolant: EXT Please note: without cutting inserts carrier; check applicability; Center distance [mm]: 80 |
| | | 8 200 03 001 Cover plate | Weight [kg]: 0.438 Shank type: BMT |
| | | 8 202 10 002 Basic holder for height adjustable adapter | Shank type: BMT Machine adaption: Centering key b 20 |
| | | 8 202 10 003 Basic holder for height adjustable adapter | Weight [kg]: 2.840 Shank type: BMT Machine adaption: Centering key b 20 Coolant: EXT |
| | | 8 202 10 008 Basic holder longitudinal seat FN 12 | Weight [kg]: 1.200 Notation: 180° reversible Shank type: BMT Machine adaption: Centering key b 20 Tool adaption: Interface FN 12 Coolant: EXT |
| | | 8 208 69 003 Test mandrel BMT 65 | Weight [kg]: 3.280 Shank size [mm]: 65.00 Shank type: BMT |

| Part-# | Name | |
|---------------------|------------------------------|---------------------------|
| 8 209 14 000 | Adapter for VDI 40 | |
| | Weight [kg]: | 4.560 |
| | Shank type: | BMT |
| | Machine adaption: | Centering key b 20 |
| | Tool adaption: | DIN 69880 - 40 |
| | Coolant: | EXT |
| | Center distance [mm]: | 35 |
| 8 209 14 001 | Adapter for VDI 40 | |
| | Weight [kg]: | 5.310 |
| | Notation: | 180° reversible; offset |
| | Shank type: | BMT |
| | Machine adaption: | Centering key b 20 |
| | Tool adaption: | DIN 69880 - 40 |
| | Coolant: | EXT |
| | Center distance [mm]: | 80 |
| 8 209 19 001 | Prism for parts | |
| | Weight [kg]: | 13.960 |
| | Notation: | 180° reversible |
| | Shank type: | BMT |
| | Machine adaption: | Centering key b 20 |
| | Coolant: | EXT |
| 8 224 12 010 | Cut-off holder sq. 25 | |
| | Weight [kg]: | 2.040 |
| | Employment for: | right cutting tools |
| | Version: | Edge on side of turret |
| | Shank type: | BMT |
| | Machine adaption: | Centering key slot b 20 |
| | Tool adaption: | Sq. 25 |
| | Coolant: | EXT |
| 8 224 12 011 | Cut-off holder sq. 25 | |
| | Weight [kg]: | 2.040 |
| | Employment for: | left cutting tools |
| | Version: | Edge on center of turret |
| | Shank type: | BMT |
| | Machine adaption: | Centering key b 20 |
| | Tool adaption: | Sq. 25 |
| | Coolant: | EXT |
| 8 224 13 008 | Cut-off holder SH 32 | |
| | Weight [kg]: | 1.840 |
| | Employment for: | Cut-off tool 32 |
| | Version: | Clampshaft on turret side |
| | Shank type: | BMT |
| | Machine adaption: | Centering key b 20 |
| | Tool adaption: | Clampshaft SH 32 |
| | Coolant: | EXT |




| Part-# | Name | |
|---|---|-----------------------------|
| 8 224 13 009 | Cut-off holder SH 32 | |
| | Weight [kg]: | 1.170 |
| | Employment for: | Cut-off tool 32 |
| | Version: | Clampshaft on turret center |
| | Shank type: | BMT |
| | Machine adaption: | Centering key b 20 |
| | Tool adaption: | Clampshaft SH 32 |
| | Coolant: | EXT |
| 8 224 15 000 | Universal turning holder sq. 25 | |
|  | Weight [kg]: | 4.380 |
| | Notation: | 180° reversible |
| | Shank type: | BMT |
| | Machine adaption: | Centering key b 20 |
| | Tool adaption: | Sq. 25 |
| | | Sq. 25 |
| | Coolant: | EXT |
| 8 224 15 008 | Universal turning holder sq. 1" | |
| | Weight [kg]: | 4.370 |
| | Notation: | 180° reversible |
| | Shank type: | BMT |
| | Machine adaption: | Centering key b 20 |
| | Tool adaption: | Sq. 1" (25,4mm) |
| | | Sq. 1" (25,4mm) |
| | Coolant: | EXT |
| 8 224 15 038 | Universal turning holder sq. 25 IC | |
| | Weight [kg]: | 4.380 |
| | Shank type: | BMT |
| | Machine adaption: | Centering key b 20 |
| | Tool adaption: | Sq. 25 |
| | | Sq. 25 |
| | Coolant: | IC/Ext |
| 8 224 15 051 | Universal turning holder sq. 25 IC | |
|  | Weight [kg]: | 4.380 |
| | Notation: | 180° reversible |
| | Shank type: | BMT |
| | Machine adaption: | Centering key b 20 |
| | Tool adaption: | Sq. 25 |
| | | Sq. 25 |
| | Coolant: | IC/Ext |
| | Pressure max [bar]: | 100 |
| | Please note: | Key rail |
| 8 225 12 002 | Cut-off holder sq. 25 | |
| | Weight [kg]: | 1.640 |
| | Employment for: | left cutting tools |
| | Version: | Edge on side of turret |
| | Shank type: | BMT |
| | Machine adaption: | Centering key b 20 |
| | Tool adaption: | Sq. 25 |
| | Coolant: | EXT |

| Part-# | Name | |
|--|----------------------------------|--|
| 8 225 12 003 | Cut-off holder sq. 25 | |
| | Employment for: | right cutting tools |
| | Version: | Edge on center of turret |
| | Shank type: | BMT |
| | Machine adaption: | Centering key b 20 |
| | Tool adaption: | Sq. 25 |
| | Coolant: | EXT |
| 8 229 16 007 | Tool holder C 4 IC | |
| | Notation: | 180° reversible |
| | Version: | right |
| | Shank type: | BMT |
| | Machine adaption: | Centering key b 20 |
| | Tool adaption: | heimatec Capto(TM) C 4 |
| | Coolant: | IC |
| | Please note: | Check applicability; note tool length! |
| | Offset [mm]: | 75 |
| 8 229 17 000 | Tool holder C 5 IC | |
|  | Weight [kg]: | 5.900 |
| | Notation: | 180° reversible |
| | Version: | right |
| | Shank type: | BMT |
| | Machine adaption: | Centering key b 20 |
| | Tool adaption: | heimatec Capto(TM) C 5 |
| | Coolant: | IC/Ext |
| | Please note: | Check applicability; note tool length! |
| | Offset [mm]: | 85 |
| 8 240 15 009 | Insert drill holder 16 IC | |
| | Notation: | 180° reversible |
| | Shank type: | BMT |
| | Tool adaption: | Whistle-Notch (DIN 1835 E) 16 |
| | Coolant: | IC |
| | Center distance [mm]: | 85 |
| 8 240 16 003 | Boring bar holder Ø 20 | |
| | Weight [kg]: | 5.700 |
| | Notation: | 180° reversible |
| | Shank type: | BMT |
| | Machine adaption: | Centering key b 20 |
| | Tool adaption: | Ø 20 |
| | Coolant: | IC/Ext |
| | Center distance [mm]: | 90 |
| 8 240 16 011 | Insert drill holder 20 IC | |
| | Weight [kg]: | 7.660 |
| | Notation: | 180° reversible |
| | Shank type: | BMT |
| | Tool adaption: | Ø 20 |
| | Coolant: | IC |
| | Center distance [mm]: | 85 |

| Part-# | Name | |
|---------------------|-------------------------------------|-----------------------|
| 8 240 16 015 | Tool holder hydro 20 - blank | |
| | Weight [kg]: | 4.280 |
| | Notation: | 180° reversible |
| | Version: | Special |
| | Shank type: | BMT |
| | Machine adaption: | Centering key b 20 |
| | Tool adaption: | Blank for hydro clamp |
| | Coolant: | IC/Ext |
| | Center distance [mm]: | 90 |
| 8 240 16 031 | Collet chuck holder ER 32 | |
| | Notation: | 180° reversible |
| | Shank type: | BMT |
| | Machine adaption: | Centering key b 20 |
| | Tool adaption: | ER 32 |
| | Coolant: | IC/Ext |
| | Center distance [mm]: | 90 |
| 8 240 17 000 | Boring bar holder Ø 25 | |
| | Weight [kg]: | 5.440 |
| | Shank type: | BMT |
| | Machine adaption: | Centering key b 20 |
| | Tool adaption: | Ø 25 |
| | Coolant: | IC/Ext |
| | Center distance [mm]: | 90 |
| 8 240 17 010 | Boring bar holder Ø 30 | |
| | Weight [kg]: | 5.960 |
| | Shank type: | BMT |
| | Machine adaption: | Centering key b 20 |
| | Tool adaption: | Ø 30 |
| | Coolant: | EXT |
| | Center distance [mm]: | 57,5 |
| 8 240 17 018 | Tool holder HT 5 | |
| | Weight [kg]: | 6.480 |
| | Shank type: | BMT |
| | Machine adaption: | Centering key b 20 |
| | Tool adaption: | HT 5 |
| | Coolant: | IC/Ext |
| | Center distance [mm]: | 90 |
| 8 240 17 019 | Tool holder HT 5 | |
| | Weight [kg]: | 6.080 |
| | Notation: | offset |
| | Shank type: | BMT |
| | Machine adaption: | Centering key b 20 |
| | Tool adaption: | HT 5 |
| | Coolant: | IC/Ext |
| | Center distance [mm]: | 90 |

| Part-# | Name | |
|---|----------------------------------|-------------------------------|
| 8 240 17 025 | Insert drill holder 25 IC | |
| | Weight [kg]: | 7.630 |
| | Notation: | 180° reversible |
| | Shank type: | BMT |
| | Tool adaption: | Whistle-Notch (DIN 1835 E) 25 |
| | Coolant: | IC |
| | Center distance [mm]: | 85 |
| 8 240 17 060 | Collet chuck holder ER 40 | |
|  | Notation: | 180° reversible |
| | Shank type: | BMT |
| | Machine adaption: | Centering key b 20 |
| | Tool adaption: | ER 40 |
| | Coolant: | IC/Ext |
| | Center distance [mm]: | 90 |
| 8 240 17 082 | Tool holder C 5 IC | |
|  | Weight [kg]: | 6.020 |
| | Notation: | 180° reversible |
| | Version: | offset; right |
| | Shank type: | BMT |
| | Machine adaption: | Centering key b 20 |
| | Tool adaption: | heimatec Capto(TM) C 5 |
| | Coolant: | IC |
| | Center distance [mm]: | 80 |
| 8 240 17 113 | Tool holder C 5 IC | |
|  | Weight [kg]: | 7.200 |
| | Notation: | 180° reversible |
| | Version: | right |
| | Shank type: | BMT |
| | Machine adaption: | Centering key b 20 |
| | Tool adaption: | heimatec Capto(TM) C 5 |
| | Coolant: | IC |
| | Center distance [mm]: | 80 |
| 8 240 18 000 | Boring bar holder Ø 32 | |
|  | Weight [kg]: | 5.220 |
| | Notation: | 180° reversible |
| | Shank type: | BMT |
| | Machine adaption: | Centering key b 20 |
| | Tool adaption: | Ø 32 |
| | Coolant: | IC/Ext |
| | Center distance [mm]: | 90 |
| 8 240 18 002 | Boring bar holder Ø 32 | |
| | Weight [kg]: | 5.760 |
| | Notation: | offset |
| | Shank type: | BMT |
| | Machine adaption: | Centering key b 20 |
| | Tool adaption: | Ø 32 |
| | Coolant: | IC/Ext |
| | Center distance [mm]: | 90 |

| Part-# | Name | |
|---------------------|--------------------------------------|--------------------|
| 8 240 18 020 | Boring bar holder Ø 32 | |
| | Weight [kg]: | 3.800 |
| | Version: | Special |
| | Shank type: | BMT |
| | Machine adaption: | Centering key b 20 |
| | Tool adaption: | Ø 32 |
| | Coolant: | IC/Ext |
| | Center distance [mm]: | 60 |
| 8 240 18 022 | Insert drill holder 32 IC | |
| | Weight [kg]: | 7.400 |
| | Notation: | 180° reversible |
| | Shank type: | BMT |
| | Tool adaption: | Ø 32 |
| | Coolant: | IC |
| | Center distance [mm]: | 85 |
| 8 240 18 035 | Boring bar holder Ø 1 1/2" | |
| | Weight [kg]: | 4.910 |
| | Notation: | 180° reversible |
| | Shank type: | BMT |
| | Machine adaption: | Centering key b 20 |
| | Tool adaption: | Ø 1 1/2" (38,1mm) |
| | Coolant: | IC/Ext |
| | Center distance [mm]: | 90 |
| 8 240 18 041 | Boring bar holder Ø 1 1/4" | |
| | Weight [kg]: | 5.160 |
| | Notation: | 180° reversible |
| | Shank type: | BMT |
| | Machine adaption: | Centering key b 20 |
| | Tool adaption: | Ø 1 1/4" (31,75mm) |
| | Coolant: | IC/Ext |
| | Center distance [mm]: | 90 |
| 8 240 18 046 | Boring bar holder Ø 32 offset | |
| | Weight [kg]: | 11.880 |
| | Notation: | 180° reversible |
| | Version: | Special |
| | Shank type: | BMT |
| | Machine adaption: | Centering key b 20 |
| | Tool adaption: | Ø 32 |
| | Coolant: | IC/Ext |
| | Center distance [mm]: | 140 |
| | Offset [mm]: | 25 |
| 8 240 18 047 | Boring bar holder Ø 32 offset | |
| | Weight [kg]: | 12.630 |
| | Notation: | 180° reversible |
| | Version: | Special |
| | Shank type: | BMT |
| | Machine adaption: | Centering key b 20 |
| | Tool adaption: | Ø 32 |
| | Coolant: | IC/Ext |
| | Center distance [mm]: | 140 |
| | Offset [mm]: | 50 |

| Part-# | Name | |
|---|---|--|
|  | 8 240 19 000 Boring bar holder Ø 40 | Weight [kg]: 4.830 Notation: 180° reversible Shank type: BMT Machine adaption: Centering key b 20 Tool adaption: Ø 40 Coolant: IC/Ext Center distance [mm]: 90 |
| | 8 240 19 004 Boring bar holder Ø 50 | Weight [kg]: 7.600 Notation: offset Shank type: BMT Machine adaption: Centering key b 20 Tool adaption: Ø 50 Coolant: IC/Ext Center distance [mm]: 85 |
| | 8 240 19 005 Boring bar holder Ø 40 offset | Weight [kg]: 7.920 Notation: 180° reversible Version: offset Shank type: BMT Machine adaption: Centering key b 20 Tool adaption: Ø 40 Coolant: IC/Ext Center distance [mm]: 90 Offset [mm]: 60 |
| | 8 240 19 006 Boring bar holder Ø 42 | Notation: 180° reversible Version: Special Shank type: BMT Machine adaption: Centering key b 20 Tool adaption: Ø 42 Coolant: IC/Ext Center distance [mm]: 90 |
| | 8 240 19 017 Boring bar holder Ø 40 | Weight [kg]: 3.540 Version: Special Shank type: BMT Machine adaption: Centering key b 20 Tool adaption: Ø 40 Coolant: IC/Ext Center distance [mm]: 60 |
| | 8 240 19 019 Insert drill holder 40 IC | Weight [kg]: 7.100 Notation: 180° reversible Shank type: BMT Tool adaption: Ø 40 Coolant: IC Center distance [mm]: 85 |

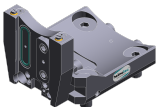
| Part-# | Name | |
|---------------------|--------------------------------------|-------------------------------|
| 8 240 19 055 | Insert drill holder 40 IC | |
| | Notation: | 180° reversible |
| | Version: | Special |
| | Shank type: | BMT |
| | Machine adaption: | Centering key b 20 |
| | Tool adaption: | Whistle-Notch (DIN 1835 E) 40 |
| | Coolant: | IC |
| | Center distance [mm]: | 140 |
| | Offset [mm]: | 50 |
| 8 240 19 056 | Boring bar holder Ø 40 offset | |
| | Weight [kg]: | 12.310 |
| | Notation: | 180° reversible |
| | Version: | Special |
| | Shank type: | BMT |
| | Machine adaption: | Centering key b 20 |
| | Tool adaption: | Ø 40 |
| | Coolant: | IC/Ext |
| | Center distance [mm]: | 140 |
| | Offset [mm]: | 50 |
| 8 240 19 057 | Boring bar holder Ø 40 offset | |
| | Weight [kg]: | 11.580 |
| | Notation: | 180° reversible |
| | Version: | Special |
| | Shank type: | BMT |
| | Machine adaption: | Centering key b 20 |
| | Tool adaption: | Ø 40 |
| | Coolant: | IC/Ext |
| | Center distance [mm]: | 140 |
| | Offset [mm]: | 25 |
| 8 240 19 059 | Insert drill holder 40 IC | |
| | Weight [kg]: | 11.640 |
| | Notation: | 180° reversible |
| | Version: | Special |
| | Shank type: | BMT |
| | Machine adaption: | Centering key b 20 |
| | Tool adaption: | Weldon (DIN 1835 b) 40 |
| | Coolant: | IC |
| | Center distance [mm]: | 140 |
| | Offset [mm]: | 50 |
| 8 244 12 000 | Facing holder sq. 25 | |
| | Weight [kg]: | 5.460 |
| | Notation: | 180° reversible |
| | Shank type: | BMT |
| | Machine adaption: | Centering key b 20 |
| | Tool adaption: | Sq. 25 |
| | Coolant: | EXT |



| Part-# | Name | |
|---|---|--|
| 8 249 16 011 | Double collet chuck holder ER 32 | |
|  | Weight [kg]: | 5.940 |
| | Notation: | 180° reversible |
| | Employment for: | Main- and sub spindle |
| | Shank type: | BMT |
| | Machine adaption: | Centering key b 20 |
| | Tool adaption: | ER 32 |
| | | ER 32 |
| | Coolant: | IC/Ext |
| | Center distance [mm]: | 90 |
| 8 249 17 006 | Double collet chuck holder ER 40 | |
|  | Notation: | 180° reversible |
| | Employment for: | Main- and sub spindle |
| | Shank type: | BMT |
| | Machine adaption: | Centering key b 20 |
| | Tool adaption: | ER 40 |
| | | ER 40 |
| | Coolant: | IC/Ext |
| | Center distance [mm]: | 90 |
| 8 250 16 006 | Double tool holder C 4 IC | |
| | Weight [kg]: | 5.500 |
| | Employment for: | Main- and sub spindle |
| | Version: | right |
| | Shank type: | BMT |
| | Machine adaption: | Centering key b 20 |
| | Tool adaption: | heimatec Capto(TM) C 4 |
| | | heimatec Capto(TM) C 4 |
| | Coolant: | IC |
| | Please note: | Check applicability; note tool length! |
| | Offset [mm]: | ±75 |
| 8 250 16 010 | Double tool holder C 4 IC | |
|  | Weight [kg]: | 2.940 |
| | Employment for: | Main- and sub spindle |
| | Version: | right |
| | Shank type: | BMT |
| | Machine adaption: | Centering key b 20 |
| | Tool adaption: | heimatec Capto(TM) C 4 |
| | | heimatec Capto(TM) C 4 |
| | Coolant: | IC |
| | Pressure max [bar]: | 80 |
| | Please note: | Check applicability; note tool length! |
| | Offset [mm]: | ±24 |
| 8 251 12 000 | Double turning holder sq. 25 | |
| | Weight [kg]: | 6.920 |
| | Employment for: | right cutting tools |
| | Shank type: | BMT |
| | Machine adaption: | Centering key b 20 |
| | Tool adaption: | Sq. 25 |
| | Coolant: | EXT |

| Part-# | Name | |
|---|---|--|
| 8 251 13 017 | Combi multiple holder 6x sq. 3/4" IC | |
|  | Employment for: Shank type: Machine adaption: Tool adaption: | Main- and sub spindle BMT Centering key b 20 Sq. 3/4" Sq. 3/4" Sq. 3/4" Sq. 3/4" |
| | Coolant: Pressure max [bar]: Please note: | IC/Ext 100 Key rail |
| 8 251 13 018 | Combi multiple holder 3x sq. 3/4" IC | |
|  | Shank type: Machine adaption: Tool adaption: | BMT Centering key b 20 Sq. 3/4" Sq. 3/4" |
| | Coolant: Pressure max [bar]: Please note: | IC/Ext 100 Key rail |
| 8 251 14 042 | Combi multiple holder 3x sq. 20 | |
| | Shank type: Machine adaption: Tool adaption: | BMT Centering key b 20 Sq. 20 Sq. 20 |
| | Coolant: | EXT |
| 8 251 14 044 | Combi multiple holder 6x sq. 20 | |
| | Weight [kg]: Employment for: Shank type: Machine adaption: Tool adaption: | 10.850 Main- and sub spindle BMT Centering key b 20 Sq. 20 Sq. 20 Sq. 20 Sq. 20 |
| | Coolant: | EXT |
| 8 251 14 089 | Combi multiple holder 3x sq. 20 IC | |
|  | Shank type: Machine adaption: Tool adaption: | BMT Centering key b 20 Sq. 20 Sq. 20 |
| | Coolant: Pressure max [bar]: Please note: | IC/Ext 100 Key rail |
| 8 251 15 000 | Combi double turning holder sq. 25 | |
|  | Weight [kg]: Shank type: Machine adaption: Tool adaption: | 6.800 BMT Centering key b 20 Sq. 25 Sq. 25 Sq. 25 Sq. 25 |


| Part-# | Name | |
|---------------------|--|-------------------------------|
| | Coolant: | EXT |
| 8 251 15 007 | Combi double turning holder sq. 1" | |
| | Weight [kg]: | 6.780 |
| | Shank type: | BMT |
| | Machine adaption: | Centering key b 20 |
| | Tool adaption: | Sq. 1" (25,4mm) |
| | | Sq. 1" (25,4mm) |
| | | Sq. 1" (25,4mm) |
| | | Sq. 1" (25,4mm) |
| | Coolant: | EXT |
| 8 253 17 083 | Multiple boring bar holder 3x Ø 25 | |
| | Weight [kg]: | 10.000 |
| | Notation: | 180° reversible |
| | Employment for: | Main- and sub spindle |
| | Shank type: | BMT |
| | Machine adaption: | Centering key b 20 |
| | Tool adaption: | Ø 25 |
| | | Ø 25 |
| | Coolant: | IC/Ext |
| | Center distance [mm]: | 65/100 |
| 8 261 18 002 | Tool holder for centering insert | |
| | Weight [kg]: | 6.110 |
| | Notation: | 180° reversible |
| | Shank type: | BMT |
| | Machine adaption: | Centering key b 20 |
| | Tool adaption: | Ø 32 |
| | Coolant: | EXT |
| | Please note: | Price without centering point |
| | Center distance [mm]: | 57,5 |
| 8 263 19 010 | Tool holder with rotating centering point | |
| | Weight [kg]: | 8.160 |
| | Notation: | 180° reversible |
| | Shank type: | BMT |
| | Machine adaption: | Centering key b 20 |
| | Rotation max [1/min]: | 6000 |
| | Coolant: | EXT |
| | Please note: | Taper roller bearings |
| | Center distance [mm]: | 90 |
| 8 263 19 031 | Tool holder with rotating centering point | |
| | Weight [kg]: | 8.280 |
| | Notation: | 180° reversible |
| | Shank type: | BMT |
| | Machine adaption: | Centering key b 20 |
| | Rotation max [1/min]: | 6000 |
| | Coolant: | EXT |
| | Please note: | Taper roller bearings |
| | Center distance [mm]: | 90 |

| Part-# | Name | |
|---|---|-------------------------------------|
| 8 269 19 001 | Tool holder with rotating centering point | |
| | Weight [kg]: | 8.510 |
| | Notation: | 180° reversible |
| | Version: | Special; double spindle |
| | Shank type: | BMT |
| | Machine adaption: | Centering key b 20 |
| | Rotation max [1/min]: | 6000 |
| | Coolant: | EXT |
| | Please note: | Taper roller bearings |
| | Center distance [mm]: | 90 |
| 8 269 19 002 | Tool holder with rotating centering point | |
| | Weight [kg]: | 8.380 |
| | Notation: | 180° reversible |
| | Version: | Special; double spindle |
| | Shank type: | BMT |
| | Machine adaption: | Centering key b 20 |
| | Rotation max [1/min]: | 6000 |
| | Coolant: | EXT |
| | Please note: | Taper roller bearings |
| | Center distance [mm]: | 90 |
| 8 320 13 004 | Cut-off holder, height adjustable SH 32 IC | |
|  | Weight [kg]: | 1.830 |
| | Notation: | 180° reversible |
| | Shank type: | BMT |
| | Machine adaption: | Centering key b 20 |
| | Tool adaption: | Clampshaft SH 32 |
| | Coolant: | IC/Ext |
| | Pressure max [bar]: | 70 |
| 8 320 13 016 | Cut-off holder, height adjustable SH 32 IC | |
| | Weight [kg]: | 2.050 |
| | Notation: | 180° reversible |
| | Shank type: | BMT |
| | Machine adaption: | Centering key b 20 |
| | Tool adaption: | Clampshaft SH 32 |
| | Coolant: | IC/Ext |
| | Pressure max [bar]: | 70 |
| | Please note: | with offset cut-off tool holder use |
| 8 320 13 017 | Cut-off holder, height adjustable SH 32 IC | |
| | Weight [kg]: | 1.960 |
| | Notation: | 180° reversible |
| | Shank type: | BMT |
| | Machine adaption: | Centering key b 20 |
| | Tool adaption: | Clampshaft SH 32 |
| | Coolant: | IC/Ext |
| | Pressure max [bar]: | 70 |
| | Please note: | Clampshaft internal |


| Part-# | Name |
|--------|------|
|--------|------|

8 320 19 002 Cut-off holder, height adjustable 845 IC



| | |
|---------------------|--|
| Weight [kg]: | 1.740 |
| Notation: | 180° reversible |
| Shank type: | BMT |
| Machine adaption: | Centering key b 20 |
| Tool adaption: |  System 845 |
| Coolant: | IC |
| Pressure max [bar]: | 70 |

8 320 19 017 Cut-off holder, height adjustable 845 IC

| | |
|---------------------|--|
| Notation: | 180° reversible |
| Shank type: | BMT |
| Machine adaption: | Centering key b 20 |
| Tool adaption: |  System 845 |
| Coolant: | IC |
| Pressure max [bar]: | 70 |
| Please note: | Clampshaft internal |



● heimatec overseas branches

○ global representations of heimatec

heimatec[®]

heimatec GmbH
Präzisionswerkzeuge
Carl-Benz-Str. 4
77871 Renchen
Germany

T +49 7843 9466 0
www.heimatec.com
info@heimatec.com

Please find the contact details of our worldwide trading partners on our website:
<https://heimatec.com/business-partners>