

TOPSELLER -
many more available!

Live Tools

heimatec®

SPINNER

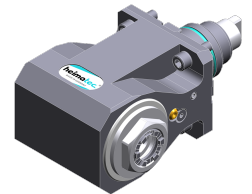
TTS 42 - BMT 45

Part-#	Tool adaption	Rotation max [1/min]	Gear ratio	Coolant	Pressure max.	Center distance
Axial drilling and milling head						
8 010 45 135	ER 25 A - u-tec	15.000	1:1	EXT	--	--
Radial drilling and milling head						
8 030 45 570	ER 25 A - u-tec	12.000	1:1	EXT	--	85 mm
8 030 45 571	ER 25 A - u-tec	12.000	1:1	IC/Ext	140 bar	85 mm
Radial drilling and milling head, double spindle						
8 039 45 089	ER 25 A - u-tec	12.000	1:1	EXT	--	85 mm
Universal head, offset						
8 043 44 032	ER 16 A - u-tec	8.000	1:1	EXT	--	69 mm
8 043 44 033	ER 16 A - u-tec	8.000	1:1	IC/Ext	140 bar	69 mm

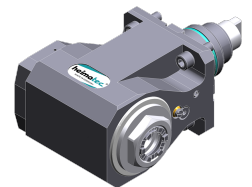
Illustrations similar.



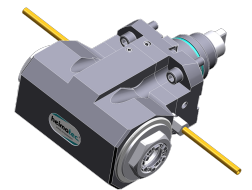
8 010 45 135



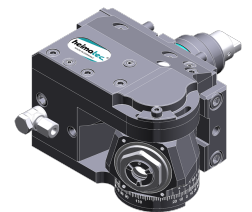
8 030 45 570



8 030 45 571



8 039 45 089



8 043 44 032

TOPSELLER -
many more available!

Static Tools

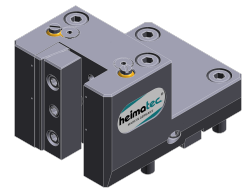
heimatec®

SPINNER

TTS 42 - BMT 45

Part-#	Tool adaption	Coolant	Pressure max.	Center distance
Universal turning holder				
8 224 04 061	Sq. 20	IC/Ext	100 bar	--
8 224 05 030	Sq. 25	IC/Ext	100 bar	--
Boring bar holder				
8 240 07 018	Ø 25	IC/Ext	--	85 mm
8 240 07 020	Ø 25	IC/Ext	--	100 mm
8 240 08 021	Ø 32	IC/Ext	80 bar	85 mm
8 240 08 023	Ø 32	IC/Ext	--	100 mm
8 240 09 017	Ø 40	IC/Ext	--	85 mm
8 240 09 018	Ø 40	IC/Ext	--	100 mm
Combi facing holder				
8 244 04 029	Sq. 20	IC/Ext	100 bar	--
Double boring bar holder				
8 249 08 004	Ø 32	IC/Ext	--	85 mm
Double turning holder				
8 251 04 016	Sq. 20	EXT	--	--
8 251 04 050	Sq. 20	IC/Ext	100 bar	--
Multiple turning holder				
8 259 01 015	Sq. 20	EXT	--	--
8 259 01 016	Sq. 20	IC/Ext	100 bar	--
Cut-off holder, height adjustable				
8 320 02 012	Clampshaft SH 26	IC/Ext	70 bar	--
8 320 03 011	Clampshaft SH 32	IC/Ext	70 bar	--

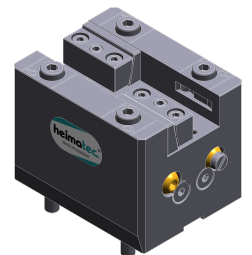
Illustrations similar.



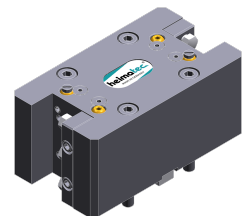
8 224 04 061



8 240 07 018



8 244 04 029



8 251 04 016