

**TOPSELLER -**  
many more available!

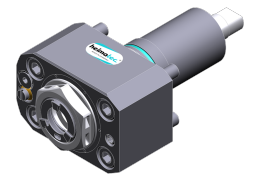
Live Tools

**heimatec**®

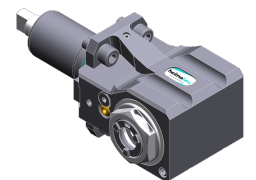
# Nakamura NT-Flex+

Part-#	Tool adaption	Rotation max [1/min]	Gear ratio	Coolant	Pressure max.	Center distance
<b>Axial drilling and milling head</b>						
8 010 34 044	<b>ER 20 A - u-tec</b>	12.000	1:1	IC/Ext	100 bar	--
<b>Radial drilling and milling head</b>						
8 030 34 043	<b>ER 20 A - u-tec</b>	12.000	1:1	EXT	--	<b>60 mm</b>
8 030 34 044	<b>ER 20 A - u-tec</b>	12.000	1:1	IC/Ext	140 bar	<b>60 mm</b>
<b>Radial drilling and milling head, double spindle</b>						
8 039 34 020	<b>ER 20 A - u-tec</b>	12.000	1:1	EXT	--	<b>60 mm</b>
<b>Universal head</b>						
8 040 34 012	<b>ER 16 A - u-tec</b>	12.000	1:1	EXT	--	<b>55 mm</b>
8 040 34 013	<b>ER 16 A - u-tec</b>	12.000	1:1	IC/Ext	140 bar	<b>55 mm</b>
<b>Universal head, offset</b>						
8 043 34 016	<b>ER 16 A - u-tec</b>	12.000	1:1	EXT	--	<b>25 mm</b>
8 043 34 017	<b>ER 16 A - u-tec</b>	12.000	1:1	IC/Ext	140 bar	<b>25 mm</b>

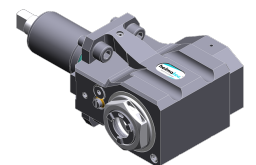
*Illustrations similar.*



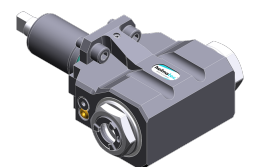
8 010 34 044



8 030 34 043



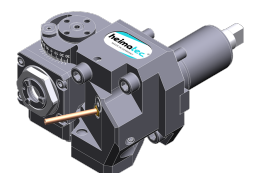
8 030 34 044



8 039 34 020



8 040 34 012



8 043 34 016

**TOPSELLER -**  
many more available!

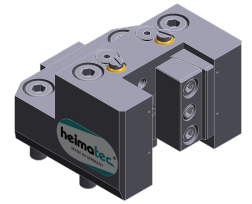
Static Tools

**heimatec**®

# Nakamura NT-Flex+

Part-#	Tool adaption	Coolant	Pressure max.	Center distance
<b>Universal turning holder</b>				
8 224 04 069	<b>Sq. 20</b>	IC/Ext	100 bar	--
<b>Cut-off holder</b>				
8 225 01 003	<b>Sq. 20</b>	IC/Ext	100 bar	--
<b>Boring bar holder</b>				
8 240 07 065	<b>Ø 25</b>	IC/Ext	100 bar	<b>75 mm</b>
<b>Combi facing holder</b>				
8 244 04 028	<b>Sq. 20</b>	IC/Ext	100 bar	--
<b>Double boring bar holder</b>				
8 249 07 005	<b>Ø 25</b>	IC/Ext	100 bar	<b>75 mm</b>
<b>Combi multiple holder</b>				
8 251 03 006	<b>Sq. 16</b>	IC/Ext	100 bar	--
8 251 03 007	<b>Sq. 16</b>	IC/Ext	100 bar	--
8 259 03 002	<b>Sq. 16</b>	IC/Ext	100 bar	--
<b>Double turning holder</b>				
8 251 04 062	<b>Sq. 20</b>	IC/Ext	100 bar	--
<b>Multiple boring bar holder</b>				
8 253 06 021	<b>Ø 25</b>	IC/Ext	100 bar	<b>75 mm</b>
8 253 06 022	<b>Ø 25</b>	IC/Ext	100 bar	<b>75 mm</b>
<b>Multiple turning holder</b>				
8 259 03 003	<b>Sq. 16</b>	IC/Ext	100 bar	--
<b>Multiple holder</b>				
8 259 07 004	<b>Sq. 20</b>	IC/Ext	100 bar	<b>75 mm</b>
<b>Cut-off holder, height adjustable</b>				
8 320 02 034	<b>Clampshaft SH 26</b>	IC/Ext	70 bar	--

Illustrations similar.



8 224 04 069



8 225 01 003



8 240 07 065