

TOPSELLER -
many more available!

Live Tools

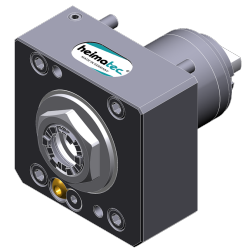
heimatec®

Miyano

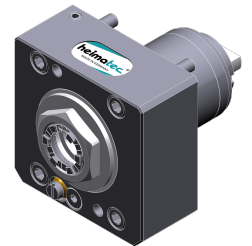
ABX 64 SYY

Part-#	Tool adaption	Rotation max [1/min]	Gear ratio	Coolant	Pressure max.	Center distance
Axial drilling and milling head						
8 010 55 036	ER 25 A - u-tec	6.000	1:1	EXT	--	--
8 010 55 037	ER 25 A - u-tec	6.000	1:1	IC/Ext	25 bar	--
8 010 55 097	ER 25 A - u-tec	15.000	1:1	IC/Ext	100 bar	--
8 010 56 075	ER 32 A - u-tec	6.000	1:1	EXT	--	--
8 010 56 076	ER 32 A - u-tec	6.000	1:1	IC/Ext	25 bar	--
8 010 56 135	ER 32 A - u-tec	15.000	1:1	IC/Ext	100 bar	--
Radial drilling and milling head						
8 030 55 259	ER 25 A - u-tec	12.000	1:1	EXT	--	75 mm
8 030 55 260	ER 25 A - u-tec	12.000	1:1	IC/Ext	140 bar	75 mm
8 030 56 260	ER 32 A - u-tec	12.000	1:1	EXT	--	75 mm
Universal head, offset						
8 043 55 002	ER 25 A - u-tec	6.000	1:1	EXT	--	60 mm
8 043 55 008	ER 25 A - u-tec	6.000	1:1	IC/Ext	25 bar	60 mm

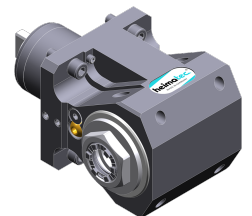
Illustrations similar.



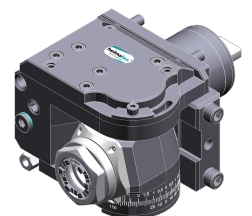
8 010 55 036



8 010 55 037



8 030 55 259



8 043 55 002

TOPSELLER -
many more available!

Static Tools

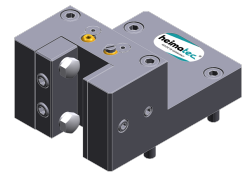
heimatec®

Miyano

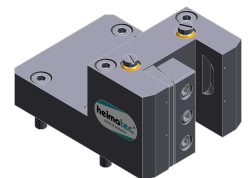
ABX 64 SYY

Part-#	Tool adaption	Coolant	Pressure max.	Center distance
Universal turning holder				
8 224 05 032	Sq. 25	IC/Ext	100 bar	--
8 224 05 007	Sq. 25/20	EXT	--	--
Boring bar holder				
8 240 08 025	Ø 32	IC/Ext	--	85 mm
8 240 09 000	Ø 40	IC/Ext	100 bar	85 mm
Multiple turning holder				
8 259 01 005	Sq. 20	EXT	--	--
Cut-off holder, height adjustable				
8 320 03 012	Clampshaft SH 32	IC/Ext	70 bar	--

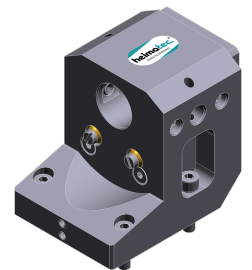
Illustrations similar.



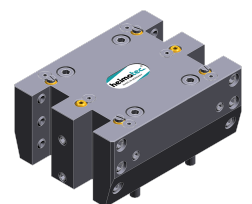
8 224 05 007



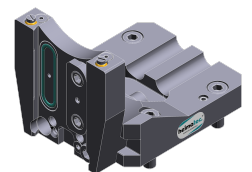
8 224 05 032



8 240 08 025



8 259 01 005



8 320 03 012