

TOPSELLER -
many more available!

Live Tools

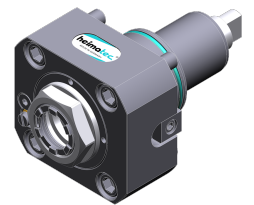
heimatec®

HAAS

ST-35/Y - BMT 65 Subspindle

Part-#	Tool adaption	Rotation max [1/min]	Gear ratio	Coolant	Pressure max.	Center distance
Axial drilling and milling head						
8 010 66 143	ER 32 A - u-tec	12.000	1:1	IC/Ext	100 bar	--
8 010 66 144	ER 32 A - u-tec	12.000	1:1	IC/Ext	25 bar	--
8 010 66 145	ER 32 A - u-tec	12.000	1:1	EXT	140 bar	--
Radial drilling and milling head						
8 030 66 239	ER 32 A - u-tec	10.000	1:1	EXT	140 bar	72 mm
8 030 66 243	ER 32 A - u-tec	10.000	1:1	IC/Ext	140 bar	72 mm
Radial drilling and milling head, double spindle						
8 039 66 025	ER 32 A - u-tec	10.000	1:1	EXT	--	72 mm
Universal head, offset						
8 043 65 000	ER 25 A - u-tec	6.000	1:1	EXT	--	69 mm
8 043 65 004	ER 25 A - u-tec	6.000	1:1	IC/Ext	140 bar	69 mm

Illustrations similar.



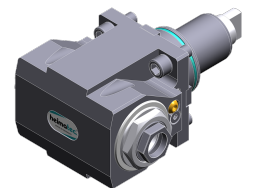
8 010 66 143



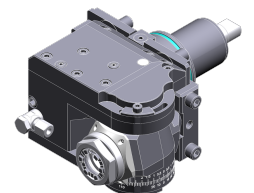
8 010 66 144



8 030 66 239



8 039 66 025



8 043 65 000

TOPSELLER -
many more available!

Static Tools

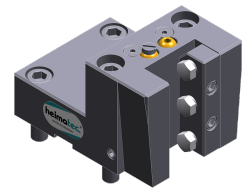
heimatec®

HAAS

ST-35/Y - BMT 65 Subspindle

Part-#	Tool adaption	Coolant	Pressure max.	Center distance
Universal turning holder				
8 224 15 006	Sq. 25	EXT	80 bar	--
8 224 15 053	Sq. 25	IC/Ext	100 bar	--
Boring bar holder				
8 240 17 044	Ø 25	IC/Ext	--	72 mm
8 240 18 089	Ø 32	IC/Ext	--	72 mm
8 240 19 132	Ø 40	IC/Ext	--	72 mm
8 240 19 067	Ø 50	IC/Ext	80 bar	72 mm
Combi facing holder				
8 244 15 005	Sq. 25	EXT	80 bar	--
Double turning holder				
8 251 15 003	Sq. 25	EXT	80 bar	--
8 251 15 046	Sq. 25	IC/Ext	100 bar	--
Cut-off holder, height adjustable				
8 320 13 005	Clampshaft SH 32	IC/Ext	70 bar	--

Illustrations similar.



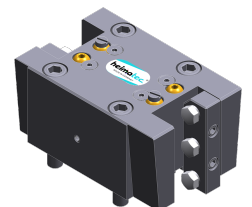
8 224 15 006



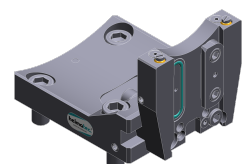
8 240 17 044



8 244 15 005



8 251 15 003



8 320 13 005