

Miyano

ANX 42 SY Y



High-tech from heimatec - heimatec - Tools and systems for productive turning and milling

heimatec belongs to the international technology and quality leaders for precision tools and specializes in the development and production of high-precision static and live tools for all CNC lathes, CNC turn-/mill machines and CNC machining centers.

The range of products* spans from static BMT and VDI tool holders, live tools up to highly complex customer-specific individual solutions. heimatec, headquartered in Renchen, has a own subsidiary in Asia and India and numerous representatives as well as trading partners all over the world.

*OUR PRODCUTS

Static tool holders

Live tool units

Precision tools

Tools for turning and machining centres

Tools for swiss type lathes

Tool changing and uick-change systems

Tool systems for gear production


Digital tool management


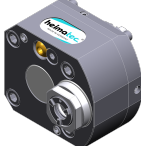
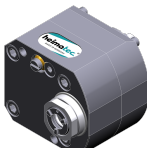
This catalogue, including all its parts, is protected by copyright. Any use outside the restricted limitations of the Copyright Act without the consent of heimatec is inadmissible and liable to prosecution. This applies in particular to duplication, translation, microfilming and storage and processing in electronic systems.


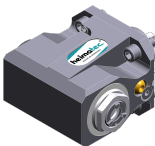
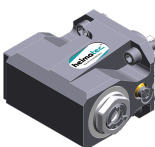
heimatec GmbH reserves the right to make technical changes at any time without giving prior notice. This applies in particular to adjustments at any time to meet new or changed international standards, or in case of further developments of our products or manufacturing processes.

The current version of our General Terms and Conditions can be found on our website.

Part-#	Name	
8 010 34 017	Axial drilling and milling head ER 16 AX UT	
	Weight [kg]:	1.450
	Tool drive:	Flat (~DIN 1809)
	Shank size [mm]:	38.00
	Shank type:	BMT
	Tool adaption:	ER 16 A - u-tec
	Gear ratio [i]:	1:1
	Torque max [Nm]:	20
	Rotation max [1/min]:	6000
	Rotating direction:	same
	Coolant:	EXT
8 010 34 018	Axial drilling and milling head ER 16 AX UT IC	
	Weight [kg]:	1.440
	Tool drive:	Flat (~DIN 1809)
	Shank size [mm]:	38.00
	Shank type:	BMT
	Tool adaption:	ER 16 A - u-tec
	Gear ratio [i]:	1:1
	Torque max [Nm]:	20
	Rotation max [1/min]:	6000
	Rotating direction:	same
	Coolant:	IC/Ext
	Pressure max [bar]:	25
8 010 34 022	Axial drilling and milling head ER 20 AX UT	
	Weight [kg]:	1.310
	Version:	Special
	Tool drive:	Flat (~DIN 1809)
	Shank size [mm]:	38.00
	Shank type:	BMT
	Tool adaption:	ER 20 A - u-tec
	Gear ratio [i]:	1:1
	Torque max [Nm]:	20
	Rotation max [1/min]:	6000
	Rotating direction:	same
	Coolant:	EXT
8 010 34 023	Axial drilling and milling head ER 16 AX UT IC	
	Tool drive:	Flat (~DIN 1809)
	Shank size [mm]:	38.00
	Shank type:	BMT
	Tool adaption:	ER 16 A - u-tec
	Gear ratio [i]:	1:1
	Torque max [Nm]:	20
	Rotation max [1/min]:	12000
	Rotating direction:	same
	Coolant:	IC/Ext
	Pressure max [bar]:	100
	Please note:	Dryrun possible

Part-#	Name	
8 010 34 025	Axial drilling and milling head ER 20 AX UT IC	
	Weight [kg]:	1.480
	Version:	Special
	Tool drive:	Flat (~DIN 1809)
	Shank size [mm]:	38.00
	Shank type:	BMT
	Tool adaption:	ER 20 A - u-tec
	Gear ratio [i]:	1:1
	Torque max [Nm]:	20
	Rotation max [1/min]:	12000
	Rotating direction:	same
	Coolant:	IC/Ext
	Pressure max [bar]:	100
	Please note:	Dryrun possible
8 010 34 026	Axial drilling and milling head ER 20 AX UT IC	
	Weight [kg]:	1.500
	Version:	Special
	Tool drive:	Flat (~DIN 1809)
	Shank size [mm]:	38.00
	Shank type:	BMT
	Tool adaption:	ER 20 A - u-tec
	Gear ratio [i]:	1:1
	Torque max [Nm]:	20
	Rotation max [1/min]:	6000
	Rotating direction:	same
	Coolant:	IC/Ext
	Pressure max [bar]:	25
8 010 35 020	Axial drilling and milling head C 3	
	Weight [kg]:	3.280
	Notation:	180° reversible
	Tool drive:	Flat (~DIN 1809)
	Shank size [mm]:	38.00
	Shank type:	BMT
	Tool adaption:	heimatec Capto(TM) C 3
	Gear ratio [i]:	1:1
	Torque max [Nm]:	32
	Rotation max [1/min]:	8000
	Rotating direction:	same
	Coolant:	EXT
	Please note:	Check applicability; tool length check !
8 013 34 007	Axial drilling and milling head ER 16 AX UT	
	Weight [kg]:	1.780
	Tool drive:	Flat (~DIN 1809)
	Shank size [mm]:	38.00
	Shank type:	BMT
	Tool adaption:	ER 16 A - u-tec
	Gear ratio [i]:	1:4
	Torque max [Nm]:	5
	Rotation max [1/min]:	24000
	Rotating direction:	same
	Coolant:	EXT

Part-#	Name	
8 013 34 008	Axial drilling and milling head ER 16 AX UT IC	
	Tool drive:	Flat (~DIN 1809)
	Shank size [mm]:	38.00
	Shank type:	BMT
	Tool adaption:	ER 16 A - u-tec
	Gear ratio [i]:	1:4
	Torque max [Nm]:	5
	Rotation max [1/min]:	24000
	Rotating direction:	same
	Coolant:	IC/Ext
	Pressure max [bar]:	100
	Please note:	Check applicability; note tool length!
8 019 34 004	Axial drilling and milling head ER 16 AX UT	
	Weight [kg]:	2.500
	Notation:	180° reversible
	Tool drive:	Flat (~DIN 1809)
	Shank size [mm]:	38.00
	Shank type:	BMT
	Tool adaption:	ER 16 A - u-tec
	Gear ratio [i]:	1:2
	Torque max [Nm]:	6
	Rotation max [1/min]:	12000
	Rotating direction:	opposite
	Coolant:	EXT
	Offset [mm]:	34,5
8 019 34 005	Axial drilling and milling head ER 16 AX UT IC	
	Weight [kg]:	3.100
	Notation:	180° reversible
	Tool drive:	Flat (~DIN 1809)
	Shank size [mm]:	38.00
	Shank type:	BMT
	Tool adaption:	ER 16 A - u-tec
	Gear ratio [i]:	1:2
	Torque max [Nm]:	6
	Rotation max [1/min]:	12000
	Rotating direction:	opposite
	Coolant:	IC/Ext
	Pressure max [bar]:	140
	Offset [mm]:	34,5
8 019 34 006	Axial drilling and milling head ER 16 AX UT	
	Weight [kg]:	2.510
	Notation:	180° reversible
	Tool drive:	Flat (~DIN 1809)
	Shank size [mm]:	38.00
	Shank type:	BMT
	Tool adaption:	ER 16 A - u-tec
	Gear ratio [i]:	2:1
	Torque max [Nm]:	20
	Rotation max [1/min]:	3000
	Rotating direction:	opposite
	Coolant:	EXT

Part-#	Name	
8 019 35 012	Axial drilling and milling head C 3 IC	
	Weight [kg]:	5.990
	Tool drive:	Flat (~DIN 1809)
	Shank size [mm]:	38.00
	Shank type:	BMT
	Tool adaption:	heimatec Capto(TM) C 3
	Gear ratio [i]:	1:1
	Torque max [Nm]:	32
	Rotation max [1/min]:	8000
	Rotating direction:	same
	Coolant:	IC/Ext
	Pressure max [bar]:	140
	Please note:	Check applicability; note tool length!
	Offset [mm]:	71
8 030 34 016	Angle-mill- and drill holder ER 16 AX UT	
	Weight [kg]:	3.320
	Notation:	180° reversible
	Tool drive:	Flat (~DIN 1809)
	Shank size [mm]:	38.00
	Shank type:	BMT
	Tool adaption:	ER 16 A - u-tec
	Gear ratio [i]:	1:1
	Torque max [Nm]:	20
	Rotation max [1/min]:	8000
	Rotating direction:	opposite
	Coolant:	EXT
	Please note:	Combi bearing
	Center distance [mm]:	59
8 030 34 017	Angle-mill- and drill holder ER 16 AX UT IC	
	Weight [kg]:	3.560
	Notation:	180° reversible
	Tool drive:	Flat (~DIN 1809)
	Shank size [mm]:	38.00
	Shank type:	BMT
	Tool adaption:	ER 16 A - u-tec
	Gear ratio [i]:	1:1
	Torque max [Nm]:	20
	Rotation max [1/min]:	8000
	Rotating direction:	opposite
	Coolant:	IC/Ext
	Pressure max [bar]:	140
	Please note:	Combi bearing
	Center distance [mm]:	59
8 030 34 018	Radial drilling and milling head ER 16 AX UT	
	Weight [kg]:	3.920
	Notation:	180° reversible
	Tool drive:	Flat (~DIN 1809)
	Shank size [mm]:	38.00
	Shank type:	BMT
	Tool adaption:	ER 16 A - u-tec
	Gear ratio [i]:	1:2
	Torque max [Nm]:	6
	Rotation max [1/min]:	12000
	Rotating direction:	same

Part-#

Name

Coolant: EXT
Center distance [mm]: 73,5

8 030 34 019

Radial drilling and milling head ER 16 AX UT IC



Weight [kg]: 3.980
Notation: 180° reversible
Tool drive: Flat (~DIN 1809)
Shank size [mm]: 38.00
Shank type: BMT
Tool adaption: ER 16 A - u-tec
Gear ratio [i]: 1:2
Torque max [Nm]: 6
Rotation max [1/min]: 12000
Rotating direction: same
Coolant: IC/Ext
Pressure max [bar]: 140
Center distance [mm]: 73,5

8 030 34 026

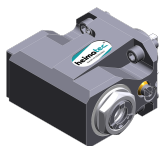
Angle-mill- and drill holder ER 20 AX UT



Weight [kg]: 3.300
Notation: 180° reversible
Tool drive: Flat (~DIN 1809)
Shank size [mm]: 38.00
Shank type: BMT
Tool adaption: ER 20 A - u-tec
Gear ratio [i]: 1:1
Torque max [Nm]: 20
Rotation max [1/min]: 8000
Rotating direction: opposite
Coolant: EXT
Please note: Combi bearing
Center distance [mm]: 59

8 030 34 028

Angle-mill- and drill holder ER 20 AX UT IC




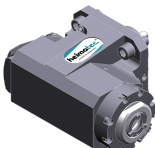
Weight [kg]: 3.550
Notation: 180° reversible
Tool drive: Flat (~DIN 1809)
Shank size [mm]: 38.00
Shank type: BMT
Tool adaption: ER 20 A - u-tec
Gear ratio [i]: 1:1
Torque max [Nm]: 20
Rotation max [1/min]: 8000
Rotating direction: opposite
Coolant: IC/Ext
Pressure max [bar]: 140
Please note: Combi bearing
Center distance [mm]: 59

8 030 34 029

Radial drilling and milling head ER 16 AX UT



Notation: 180° reversible
Tool drive: Flat (~DIN 1809)
Shank size [mm]: 38.00
Shank type: BMT
Tool adaption: ER 16 A - u-tec
Gear ratio [i]: 1:4

Part-#	Name	
		Torque max [Nm]: 5 Rotation max [1/min]: 24000 Rotating direction: opposite Coolant: EXT Center distance [mm]: 59
8 030 34 036	Radial drilling and milling head ER 16 AX UT	
		Weight [kg]: 3.970 Notation: 180° reversible Tool drive: Flat (~DIN 1809) Shank size [mm]: 38.00 Shank type: BMT Tool adaption: ER 16 A - u-tec Gear ratio [i]: 1:3 Torque max [Nm]: 6 Rotation max [1/min]: 18000 Rotating direction: same Coolant: EXT Center distance [mm]: 73,5
8 030 34 037	Radial drilling and milling head ER 16 AX UT IC	
		Weight [kg]: 3.900 Notation: 180° reversible Tool drive: Flat (~DIN 1809) Shank size [mm]: 38.00 Shank type: BMT Tool adaption: ER 16 A - u-tec Gear ratio [i]: 1:4 Torque max [Nm]: 5 Rotation max [1/min]: 24000 Rotating direction: opposite Coolant: IC/Ext Pressure max [bar]: 140 Center distance [mm]: 59
8 030 34 045	Radial drilling and milling head ER 20 AX UT IC	
		Weight [kg]: 3.520 Notation: 180° reversible Tool drive: Flat (~DIN 1809) Shank size [mm]: 38.00 Shank type: BMT Tool adaption: ER 20 A - u-tec Gear ratio [i]: 1:1 Torque max [Nm]: 20 Rotation max [1/min]: 12000 Rotating direction: opposite Coolant: IC/Ext Pressure max [bar]: 140 Center distance [mm]: 59
8 030 34 046	Radial drilling and milling head ER 20 AX UT	
		Weight [kg]: 3.270 Notation: 180° reversible Tool drive: Flat (~DIN 1809) Shank size [mm]: 38.00 Shank type: BMT Tool adaption: ER 20 A - u-tec

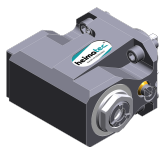
Part-#

Name

Gear ratio [i]: 1:1
Torque max [Nm]: 20
Rotation max [1/min]: 12000
Rotating direction: opposite
Coolant: EXT
Center distance [mm]: 59

8 030 34 048

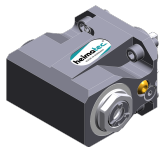
Radial drilling and milling head ER 16 AX UT IC



Weight [kg]: 3.540
Notation: 180° reversible
Tool drive: Flat (~DIN 1809)
Shank size [mm]: 38.00
Shank type: BMT
Tool adaption: ER 16 A - u-tec
Gear ratio [i]: 1:1
Torque max [Nm]: 20
Rotation max [1/min]: 12000
Rotating direction: opposite
Coolant: IC/Ext
Pressure max [bar]: 140
Center distance [mm]: 59

8 030 34 049

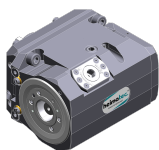
Radial drilling and milling head ER 16 AX UT



Weight [kg]: 3.280
Notation: 180° reversible
Tool drive: Flat (~DIN 1809)
Shank size [mm]: 38.00
Shank type: BMT
Tool adaption: ER 16 A - u-tec
Gear ratio [i]: 1:1
Torque max [Nm]: 20
Rotation max [1/min]: 12000
Rotating direction: opposite
Coolant: EXT
Center distance [mm]: 59

8 030 35 031

Radial drilling and milling head C 3 IC



Weight [kg]: 6.790
Notation: 180° reversible
Tool drive: Flat (~DIN 1809)
Shank size [mm]: 38.00
Shank type: BMT
Tool adaption: heimatec Capto(TM) C 3
Gear ratio [i]: 1:1
Torque max [Nm]: 25
Rotation max [1/min]: 8000
Rotating direction: opposite
Coolant: IC/Ext
Pressure max [bar]: 140
Please note: Check applicability; note tool length!
Center distance [mm]: 65

Part-#	Name
--------	------

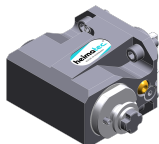
8 030 35 032



Radial drilling and milling head C 3 IC

Weight [kg]: 6.180
 Notation: 180° reversible
 Tool drive: Flat (~DIN 1809)
 Shank size [mm]: 38.00
 Shank type: BMT
 Tool adaption: heimatec Capto(TM) C 3
 Gear ratio [i]: 1:1
 Torque max [Nm]: 25
 Rotation max [1/min]: 8000
 Rotating direction: opposite
 Coolant: IC/Ext
 Pressure max [bar]: 140
 Please note: Check applicability; note tool length!
 Center distance [mm]: 65

8 031 34 003



Radial polygon head arbor 16

Weight [kg]: 3.420
 Notation: 180° reversible
 Tool drive: Flat (~DIN 1809)
 Shank size [mm]: 38.00
 Shank type: BMT
 Tool adaption: Polygon arbor 16
 Gear ratio [i]: 1:1
 Torque max [Nm]: 20
 Rotation max [1/min]: 6000
 Rotating direction: opposite
 Coolant: EXT
 Please note: Combi bearing
 Center distance [mm]: 59

8 033 34 003

Radial drilling and milling head ER 16 AX UT

Weight [kg]: 3.960
 Notation: offset
 Employment for: Sub spindle
 Tool drive: Flat (~DIN 1809)
 Shank size [mm]: 38.00
 Shank type: BMT
 Tool adaption: ER 16 A - u-tec
 Gear ratio [i]: 1:1
 Torque max [Nm]: 20
 Rotation max [1/min]: 6000
 Rotating direction: same
 Coolant: EXT
 Please note: Combi bearing
 Center distance [mm]: 59

8 033 34 004

Radial drilling and milling head ER 16 AX UT IC

Weight [kg]: 4.360
 Notation: offset
 Employment for: Sub spindle
 Tool drive: Flat (~DIN 1809)
 Shank size [mm]: 38.00
 Shank type: BMT
 Tool adaption: ER 16 A - u-tec
 Gear ratio [i]: 1:1
 Torque max [Nm]: 20

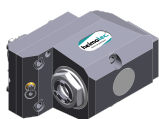
Part-#	Name
--------	------

Rotation max [1/min]:	6000
Rotating direction:	same
Coolant:	IC/Ext
Pressure max [bar]:	140
Please note:	Combi bearing
Center distance [mm]:	59

8 033 34 007 Radial drilling and milling head ER 20 AX UT

Weight [kg]:	4.070
Notation:	offset
Employment for:	Sub spindle
Tool drive:	Flat (~DIN 1809)
Shank size [mm]:	38.00
Shank type:	BMT
Tool adaption:	ER 20 A - u-tec
Gear ratio [i]:	1:1
Torque max [Nm]:	20
Rotation max [1/min]:	6000
Rotating direction:	same
Coolant:	EXT
Please note:	Combi bearing
Center distance [mm]:	59




8 033 34 008 Radial drilling and milling head ER 20 AX UT IC



Weight [kg]:	4.240
Notation:	offset
Employment for:	Sub spindle
Tool drive:	Flat (~DIN 1809)
Shank size [mm]:	38.00
Shank type:	BMT
Tool adaption:	ER 20 A - u-tec
Gear ratio [i]:	1:1
Torque max [Nm]:	20
Rotation max [1/min]:	6000
Rotating direction:	same
Coolant:	IC/Ext
Pressure max [bar]:	140
Please note:	Combi bearing
Center distance [mm]:	59

8 033 34 009 Radial drilling and milling head ER 16 AX UT IC

Weight [kg]:	4.340
Notation:	offset
Employment for:	Sub spindle
Tool drive:	Flat (~DIN 1809)
Shank size [mm]:	38.00
Shank type:	BMT
Tool adaption:	ER 16 A - u-tec
Gear ratio [i]:	1:2
Torque max [Nm]:	12
Rotation max [1/min]:	12000
Rotating direction:	same
Coolant:	IC/Ext
Pressure max [bar]:	140
Center distance [mm]:	59

Part-#	Name	
8 033 34 010	Radial drilling and milling head ER 16 AX UT	offset Flat (~DIN 1809) 38.00 BMT ER 16 A - u-tec 1:2 12 12000 same EXT 59
8 037 31 000	Radial disk mill head arbor 8	 3.720 180° reversible Flat (~DIN 1809) 38.00 BMT Arbor 8 2:1 20 3000 opposite EXT Check applicability! 65
8 037 33 002	Radial disk mill head arbor 13	 3.780 180° reversible 0° position can be pinned Flat (~DIN 1809) 38.00 BMT Arbor 13 2:1 20 3000 opposite EXT Check applicability! 65
8 037 34 003	Woodruff keycutter ER 16 AX UT	 3.300 180° reversible Flat (~DIN 1809) 38.00 BMT ER 16 A - u-tec 2:1 20 3000 opposite EXT 65

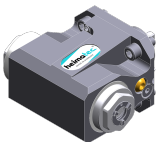
Part-#	Name
--------	------

8 037 34 007



Radial disk mill head arbor 16
 Weight [kg]: 3.880
 Notation: 180° reversible
 Version: 0° position can be pinned
 Tool drive: Flat (~DIN 1809)
 Shank size [mm]: 38.00
 Shank type: BMT
 Tool adaption: Arbor 16
 Gear ratio [i]: 2:1
 Torque max [Nm]: 20
 Rotation max [1/min]: 3000
 Rotating direction: opposite
 Coolant: EXT
 Please note: Check applicability!
 Center distance [mm]: 65

8 039 34 006



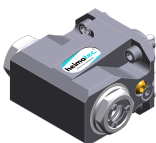
Radial drilling and milling head ER 16 AX UT
 Weight [kg]: 2.800
 Notation: 180° reversible
 Version: double spindle
 Tool drive: Flat (~DIN 1809)
 Shank size [mm]: 38.00
 Shank type: BMT
 Tool adaption: ER 16 u-tec
 Gear ratio [i]: 1:1
 Torque max [Nm]: 20
 Rotation max [1/min]: 12000
 Rotating direction: same/opposite
 Coolant: EXT
 Please note: stronger bearing
 Center distance [mm]: 59

8 039 34 007



Radial drilling and milling head ER 16 AX UT
 Weight [kg]: 4.370
 Notation: offset
 Employment for: Main- and sub spindle
 Version: double spindle
 Tool drive: Flat (~DIN 1809)
 Shank size [mm]: 38.00
 Shank type: BMT
 Tool adaption: ER 16 A - u-tec
 Gear ratio [i]: 1:1
 Torque max [Nm]: 20
 Rotation max [1/min]: 6000
 Rotating direction: same/opposite
 Coolant: EXT
 Please note: stronger bearing
 Center distance [mm]: 59

8 039 34 012



Radial drilling and milling head ER 20 AX UT
 Notation: 180° reversible
 Version: double spindle
 Tool drive: Flat (~DIN 1809)
 Shank size [mm]: 38.00
 Shank type: BMT
 Tool adaption: ER 20 A - u-tec

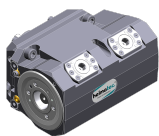
Part-#	Name	
		Gear ratio [i]: 1:1 Torque max [Nm]: 20 Rotation max [1/min]: 12000 Rotating direction: same/opposite Coolant: EXT Please note: stronger bearing Center distance [mm]: 59
8 039 34 013	Radial drilling and milling head ER 20 AX UT	Weight [kg]: 4.260 Notation: offset Employment for: Main- and sub spindle Version: double spindle Tool drive: Flat (~DIN 1809) Shank size [mm]: 38.00 Shank type: BMT Tool adaption: ER 20 A - u-tec Gear ratio [i]: 1:1 Torque max [Nm]: 20 Rotation max [1/min]: 6000 Rotating direction: same/opposite Coolant: EXT Please note: stronger bearing Center distance [mm]: 59
8 039 34 014	Radial drilling and milling head ER 16 AX UT	Weight [kg]: 4.270 Employment for: Main- and sub spindle Version: double spindle Tool drive: Flat (~DIN 1809) Shank size [mm]: 38.00 Shank type: BMT Tool adaption: ER 16 A - u-tec Gear ratio [i]: 1:1 Torque max [Nm]: 20/Sp. Rotation max [1/min]: 6000 Rotating direction: same Coolant: EXT Please note: stronger bearing Center distance [mm]: 45/80
8 039 34 015	Radial drilling and milling head ER 16 AX UT IC	Weight [kg]: 4.620 Employment for: Main- and sub spindle Version: double spindle Tool drive: Flat (~DIN 1809) Shank size [mm]: 38.00 Shank type: BMT Tool adaption: ER 16 A - u-tec Gear ratio [i]: 1:1 Torque max [Nm]: 20/Sp. Rotation max [1/min]: 6000 Rotating direction: same Coolant: IC/Ext Pressure max [bar]: 140 Please note: stronger bearing Center distance [mm]: 45/80

Part-#	Name
--------	------

8 039 34 018 Radial drilling and milling head ER 16 AX UT

Weight [kg]: 4.370
 Notation: offset
 Employment for: Main- and sub spindle
 Version: double spindle
 Tool drive: Flat (~DIN 1809)
 Shank size [mm]: 38.00
 Shank type: BMT
 Tool adaption: ER 16 A - u-tec
 Gear ratio [i]: 1:2
 Torque max [Nm]: 12
 Rotation max [1/min]: 12000
 Rotating direction: same
 Coolant: EXT
 Please note: stronger bearing
 Center distance [mm]: 59

8 039 35 008 Radial drilling and milling head C 3



Weight [kg]: 7.675
 Notation: 180° reversible
 Employment for: Main- and sub spindle
 Version: double spindle
 Tool drive: Flat (~DIN 1809)
 Shank size [mm]: 38.00
 Shank type: BMT
 Tool adaption: heimatec Capto(TM) C 3
 Gear ratio [i]: 1:1
 Torque max [Nm]: 25
 Rotation max [1/min]: 8000
 Rotating direction: same/opposite
 Coolant: EXT
 Please note: Check applicability; note tool length!
 Center distance [mm]: 65

8 043 34 002 Universal head +105°/-20° adj. ER16 AX UT



Notation: offset
 Employment for: Main spindle
 Tool drive: Flat (~DIN 1809)
 Shank size [mm]: 38.00
 Shank type: BMT
 Tool adaption: ER 16 A - u-tec
 Gear ratio [i]: 1:1
 Torque max [Nm]: 20
 Rotation max [1/min]: 6000
 Rotating direction: opposite
 Coolant: EXT
 Pressure max [bar]: 140
 Center distance [mm]: 50
 Offset [mm]: 35

8 043 34 003 Universal head +105°/-20° adj. ER16AX UTIK



Notation: offset
 Employment for: Main spindle
 Tool drive: Flat (~DIN 1809)
 Shank size [mm]: 38.00
 Shank type: BMT
 Tool adaption: ER 16 A - u-tec

Part-#	Name
--------	------

Gear ratio [i]: 1:1
 Torque max [Nm]: 20
 Rotation max [1/min]: 6000
 Rotating direction: opposite
 Coolant: IC/Ext
 Pressure max [bar]: 25
 Center distance [mm]: 50
 Offset [mm]: 35

8 043 34 004 Universal head +105°/-20° adj. ER16 AX UT



Notation: offset
 Employment for: Main spindle
 Tool drive: Flat (~DIN 1809)
 Shank size [mm]: 38.00
 Shank type: BMT
 Tool adaption: ER 16 A - u-tec
 Gear ratio [i]: 1:2
 Torque max [Nm]: 6
 Rotation max [1/min]: 12000
 Rotating direction: opposite
 Coolant: EXT
 Center distance [mm]: 50
 Offset [mm]: 35

8 043 34 005 Universal head +105°/-20° adj. ER16AX UTIK

Notation: offset
 Employment for: Main spindle
 Tool drive: Flat (~DIN 1809)
 Shank size [mm]: 38.00
 Shank type: BMT
 Tool adaption: ER 16 A - u-tec
 Gear ratio [i]: 1:2
 Torque max [Nm]: 6
 Rotation max [1/min]: 12000
 Rotating direction: opposite
 Coolant: IC/Ext
 Pressure max [bar]: 25
 Center distance [mm]: 50
 Offset [mm]: 35

8 043 34 006 Universal head +120°/-40° adj. ER16 AX UT

Weight [kg]: 4.790
 Notation: offset
 Employment for: Main spindle
 Version: Special
 Tool drive: Flat (~DIN 1809)
 Shank size [mm]: 38.00
 Shank type: BMT
 Tool adaption: ER 16 A - u-tec
 Gear ratio [i]: 1:1
 Torque max [Nm]: 20
 Rotation max [1/min]: 6000
 Rotating direction: opposite
 Coolant: EXT
 Center distance [mm]: 50
 Offset [mm]: 35

Part-#	Name
--------	------

8 043 34 013



Universal head +110°/-90° adj. ER16 AX UT

Weight [kg]: 4.140
 Notation: offset; 180° reversible
 Employment for: Main- and sub spindle
 Version: Special
 Tool drive: Flat (~DIN 1809)
 Shank size [mm]: 38.00
 Shank type: BMT
 Tool adaption: ER 16 A - u-tec
 Gear ratio [i]: 1:1
 Torque max [Nm]: 20
 Rotation max [1/min]: 6000
 Rotating direction: opposite
 Coolant: EXT
 Please note: Note swivel range!
 Center distance [mm]: 66
 Offset [mm]: 15

8 043 34 014



Universal head +110°/-90° adj. ER16AX UTIK



Weight [kg]: 4.250
 Notation: offset; 180° reversible
 Employment for: Main- and sub spindle
 Version: Special
 Tool drive: Flat (~DIN 1809)
 Shank size [mm]: 38.00
 Shank type: BMT
 Tool adaption: ER 16 A - u-tec
 Gear ratio [i]: 1:1
 Torque max [Nm]: 20
 Rotation max [1/min]: 6000
 Rotating direction: opposite
 Coolant: IC/Ext
 Pressure max [bar]: 25
 Please note: Note swivel range!
 Center distance [mm]: 66
 Offset [mm]: 15

8 050 34 000






Multispindle drilling head ER 16 AX UT

Weight [kg]: 3.400
 Version: 2-spindles
 Tool drive: Flat (~DIN 1809)
 Shank size [mm]: 38.00
 Shank type: BMT
 Tool adaption: ER 16 A - u-tec
 Gear ratio [i]: 1:1
 Torque max [Nm]: 16/Sp.
 Rotation max [1/min]: 6000
 Rotating direction: same
 Coolant: EXT
 Offset [mm]: 60

Part-#	Name	
	8 050 34 002	Multispindle drilling head ER 16 AX UT
	Weight [kg]:	3.250
	Notation:	180° reversible
	Version:	2-spindles
	Tool drive:	Flat (~DIN 1809)
	Shank size [mm]:	38.00
	Shank type:	BMT
	Tool adaption:	ER 16 A - u-tec
	Gear ratio [i]:	1:1
	Torque max [Nm]:	20/Sp.
	Rotation max [1/min]:	6000
Rotating direction:	opposite	
Coolant:	EXT	
Offset [mm]:	±34,5	
	8 050 34 003	Multispindle drilling head ER 16 AX UT IC
	Weight [kg]:	4.130
	Notation:	180° reversible
	Version:	2-spindles
	Tool drive:	Flat (~DIN 1809)
	Shank size [mm]:	38.00
	Shank type:	BMT
	Tool adaption:	ER 16 A - u-tec
	Gear ratio [i]:	1:1
	Torque max [Nm]:	20/Sp.
	Rotation max [1/min]:	6000
Rotating direction:	opposite	
Coolant:	IC/Ext	
Pressure max [bar]:	140	
Offset [mm]:	+34,5/-34,5	
	8 050 34 005	Multispindle drilling head ER 16 AX UT
	Weight [kg]:	3.160
	Notation:	180° reversible
	Version:	2-spindles
	Tool drive:	Flat (~DIN 1809)
	Shank size [mm]:	38.00
	Shank type:	BMT
	Tool adaption:	ER 16 A - u-tec
	Gear ratio [i]:	1:2
	Torque max [Nm]:	6/Sp.
	Rotation max [1/min]:	12000
Rotating direction:	opposite	
Coolant:	EXT	
Offset [mm]:	+34,5/-34,5	
	8 053 34 000	Multispindle radial head ER 16 AX UT
	Weight [kg]:	4.560
	Employment for:	Main spindle
	Version:	2-spindles
	Tool drive:	Flat (~DIN 1809)
	Shank size [mm]:	38.00
	Shank type:	BMT
	Tool adaption:	ER 16 A - u-tec
	Gear ratio [i]:	1:1
	Torque max [Nm]:	20
	Rotation max [1/min]:	6000

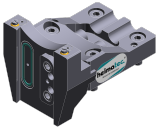

Part-#	Name	
	Rotating direction:	same/opposite
	Coolant:	EXT
	Please note:	stronger bearing
	Center distance [mm]:	37/72
8 053 34 001	Multispindle radial head ER 16AX UT IC	
	Weight [kg]:	4.980
	Employment for:	Main spindle
	Version:	2-spindles
	Tool drive:	Flat (~DIN 1809)
	Shank size [mm]:	38.00
	Shank type:	BMT
	Tool adaption:	ER 16 A - u-tec
	Gear ratio [i]:	1:1
	Torque max [Nm]:	20
	Rotation max [1/min]:	6000
	Rotating direction:	same/opposite
	Coolant:	IC/Ext
	Pressure max [bar]:	140
	Please note:	stronger bearing
	Center distance [mm]:	37/72
8 053 34 004	Multispindle radial head ER 16 AX UT	
	Weight [kg]:	4.910
	Employment for:	Main spindle
	Version:	2-spindles
	Tool drive:	Flat (~DIN 1809)
	Shank size [mm]:	38.00
	Shank type:	BMT
	Tool adaption:	ER 16 A - u-tec
	Gear ratio [i]:	1:1
	Torque max [Nm]:	20
	Rotation max [1/min]:	6000
	Rotating direction:	same/opposite
	Coolant:	EXT
	Please note:	stronger bearing
	Center distance [mm]:	45/80
8 053 34 005	Multispindle radial head ER 16AX UT IC	
	Weight [kg]:	5.510
	Employment for:	Main spindle
	Version:	2-spindles
	Tool drive:	Flat (~DIN 1809)
	Shank size [mm]:	38.00
	Shank type:	BMT
	Tool adaption:	ER 16 A - u-tec
	Gear ratio [i]:	1:1
	Torque max [Nm]:	20
	Rotation max [1/min]:	6000
	Rotating direction:	same/opposite
	Coolant:	IC/Ext
	Pressure max [bar]:	140
	Please note:	stronger bearing
	Center distance [mm]:	45/80

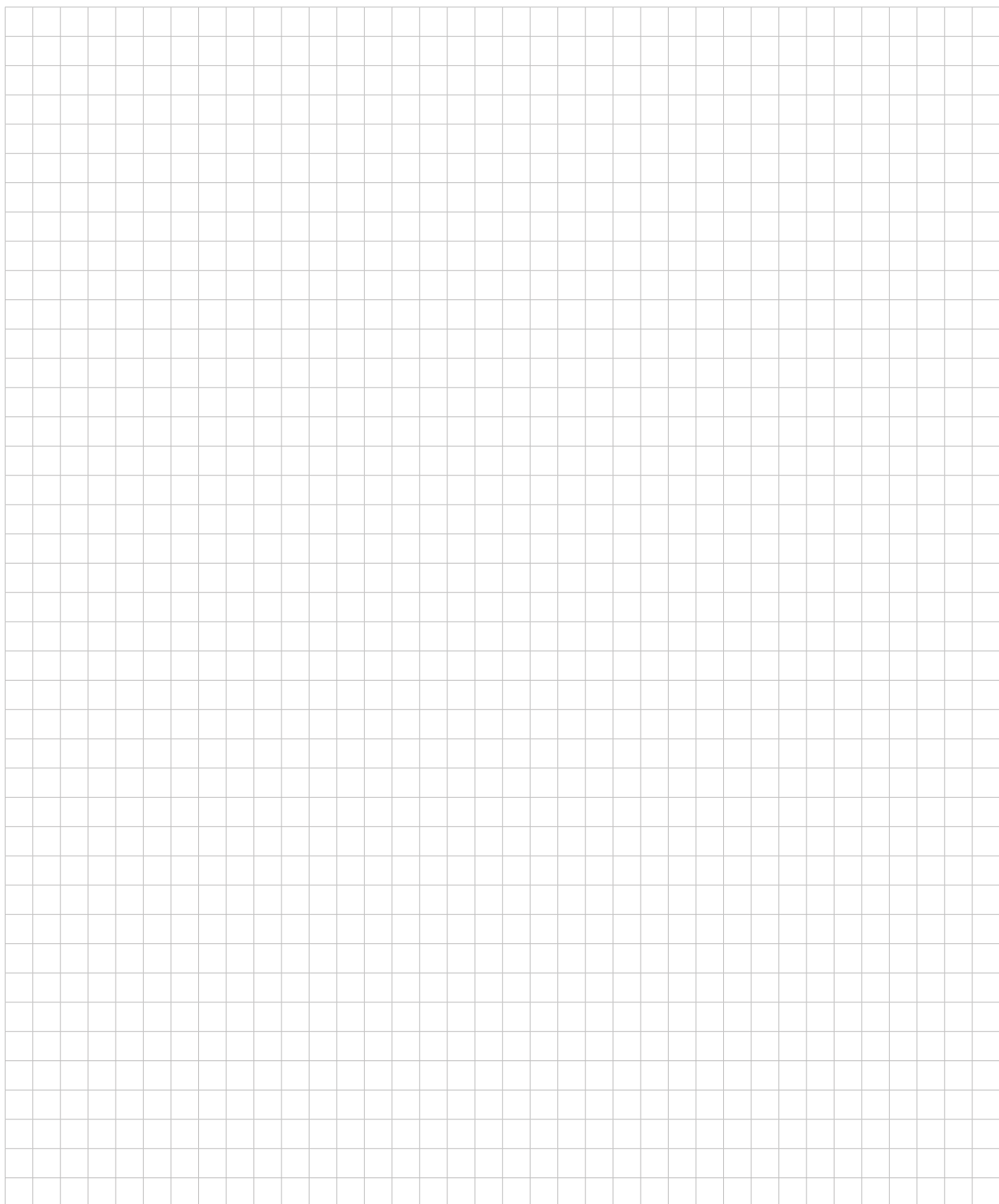
Part-#	Name			
	8 053 34 009 Multispindle radial head ER 16 AX UT	Weight [kg]: 5.520 Notation: 180° reversible Employment for: Main- and sub spindle Version: 2-spindles; offset Tool drive: Flat (~DIN 1809) Shank size [mm]: 38.00 Shank type: BMT Tool adaption: ER 16 A - u-tec Gear ratio [i]: 1:1 Torque max [Nm]: 16 Rotation max [1/min]: 6000 Rotating direction: same Coolant: EXT Please note: stronger bearing Center distance [mm]: 80		
		8 068 34 000 Radial whirling unit HW 46	Weight [kg]: 4.100 Notation: 180° reversible Tool drive: Flat (~DIN 1809) Shank size [mm]: 38.00 Shank type: BMT Tool adaption: HW 46 Gear ratio [i]: 1:1 Torque max [Nm]: 16 Rotation max [1/min]: 8000 Rotating direction: same Coolant: no Center distance [mm]: 65	
		8 200 02 000 Cover plate	Weight [kg]: 0.248 Shank type: -	
			8 202 00 012 Basic holder longitudinal seat FN 12	Weight [kg]: 0.860 Notation: 180° reversible Shank type: BMT Machine adaption: Centering bolt ø 12 Tool adaption: Interface FN 12 Coolant: EXT
			8 224 04 071 Universal turning holder sq. 20 IC	Notation: 180° reversible Shank type: BMT Machine adaption: Centering bolt ø 12 Tool adaption: Sq. 20 Sq. 20 Coolant: IC/Ext Pressure max [bar]: 140 Please note: Key rail

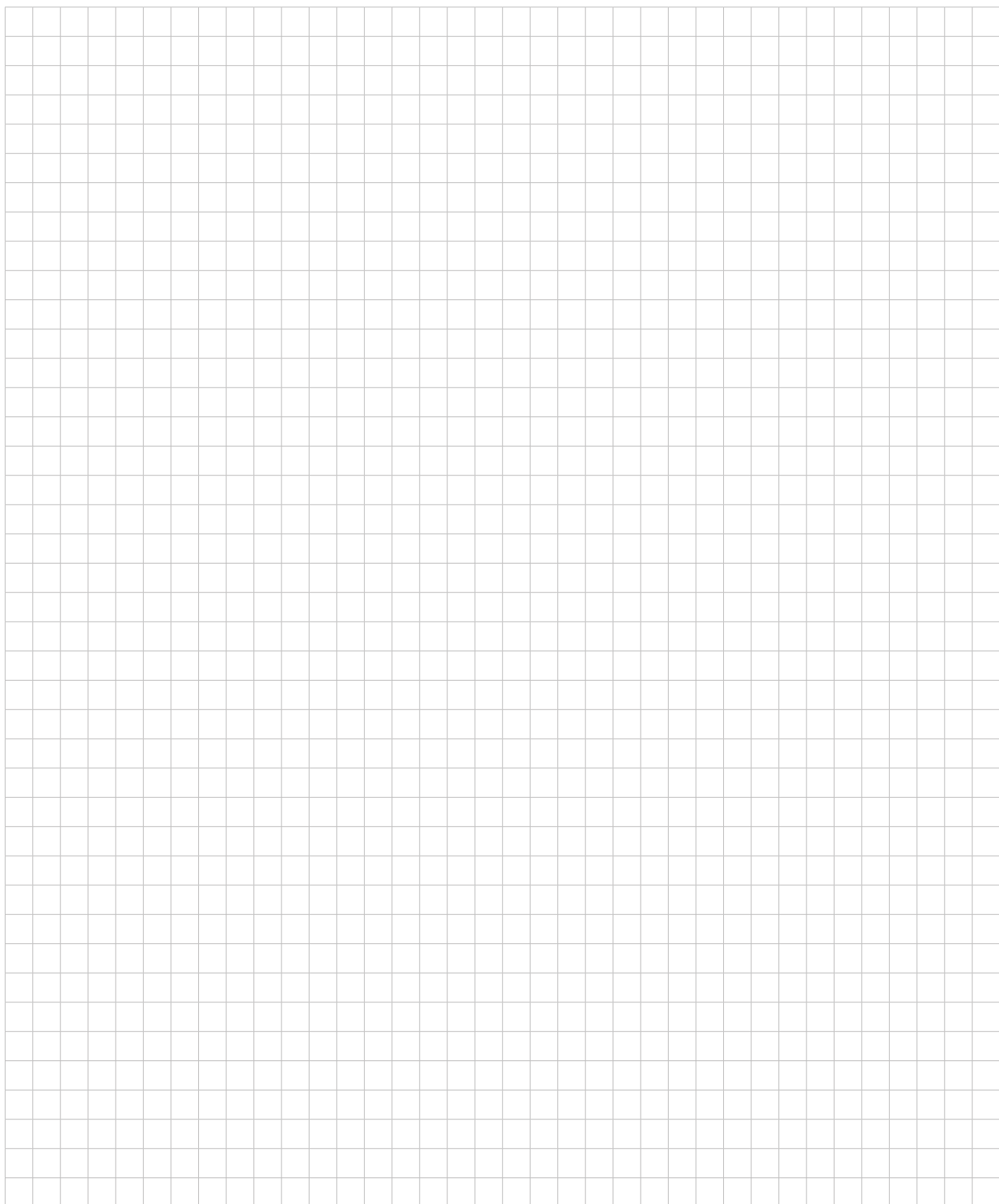
Part-#	Name	
8 229 05 008	Tool holder C 3 IC	
	Weight [kg]:	1.360
	Notation:	180° reversible
	Version:	right
	Shank type:	BMT
	Machine adaption:	Centering bolt ø 12
	Tool adaption:	heimatec Capto(TM) C 3
	Coolant:	IC
	Please note:	Check applicability; note tool length!
	Offset [mm]:	20
8 229 05 011	Tool holder C 3 IC	
	Weight [kg]:	2.520
	Notation:	180° reversible
	Version:	right
	Shank type:	BMT
	Machine adaption:	Centering bolt ø 12
	Tool adaption:	heimatec Capto(TM) C 3
	Coolant:	IC
	Please note:	Check applicability; note tool length!
	Offset [mm]:	54
8 229 34 000	Adapter for sensor Blum TC 54-10 T	
	Weight [kg]:	0.530
	Shank size [mm]:	38.00
	Shank type:	BMT
	Tool adaption:	Blum TC54-10T
8 240 05 067	Tool holder C 3 IC	
	Weight [kg]:	3.250
	Notation:	180° reversible
	Version:	right
	Shank type:	BMT
	Machine adaption:	Centering bolt ø 12
	Tool adaption:	heimatec Capto(TM) C 3
	Coolant:	IC
	Please note:	Check applicability; note tool length!
	Center distance [mm]:	75
8 240 05 068	Tool holder C 3 IC	
	Weight [kg]:	2.790
	Notation:	180° reversible
	Version:	offset; right
	Shank type:	BMT
	Machine adaption:	Centering bolt ø 12
	Tool adaption:	heimatec Capto(TM) C 3
	Coolant:	IC
	Please note:	Check applicability; note tool length!
	Center distance [mm]:	75

Part-#	Name	
8 240 08 035	Boring bar holder Ø 32	
	Weight [kg]: Notation: Shank type: Machine adaption: Tool adaption: Coolant: Center distance [mm]:	2.840 offset, 180° reversible BMT Centering bolt ø 12 Ø 32 IC/Ext 60
8 249 05 010	Double tool holder C 3 IC	
	Employment for: Version: Shank type: Machine adaption: Tool adaption: Coolant: Please note: Center distance [mm]:	Main- and sub spindle right BMT Centering bolt ø 12 heimatec Capto(TM) C 3 heimatec Capto(TM) C 3 IC Check applicability; note tool length! 75
8 250 05 005	Multiple tool holder C 3 IC	
	Employment for: Version: Shank type: Machine adaption: Tool adaption: Coolant: Please note: Offset [mm]:	Main- and sub spindle right BMT Centering bolt ø 12 heimatec Capto(TM) C 3 heimatec Capto(TM) C 3 IC Check applicability; note tool length! 20 20
8 250 05 009	Multiple tool holder C 3 IC	
	Employment for: Version: Shank type: Machine adaption: Tool adaption: Coolant: Please note: Offset [mm]:	Main- and sub spindle right BMT Centering bolt ø 12 heimatec Capto(TM) C 3 heimatec Capto(TM) C 3 IC Check applicability; note tool length! 54 54
8 253 07 048	Multiple boring bar holder Ø 25	
	Weight [kg]: Notation: Employment for: Shank type: Machine adaption: Tool adaption: Coolant: Center distance [mm]:	2.810 offset Main- and sub spindle BMT Centering bolt ø 12 Ø 25 Ø 25 IC/Ext 44/79

Part-#	Name	
8 259 05 013	Multiple tool holder C 3 IC	
	Notation: Version: Shank type: Machine adaption: Tool adaption: Coolant: Please note: Center distance [mm]:	180° reversible right; Y-axes offset BMT Centering bolt ø 12 heimatec Capto(TM) C 3 heimatec Capto(TM) C 3 IC Check applicability; note tool length! 75
8 259 05 014	Multiple tool holder C 3 IC	
	Notation: Version: Shank type: Machine adaption: Tool adaption: Coolant: Please note: Center distance [mm]:	180° reversible right; offset; Y-axes offset BMT Centering bolt ø 12 heimatec Capto(TM) C 3 heimatec Capto(TM) C 3 IC Check applicability; note tool length! 75
8 259 05 015	Multiple tool holder C 3 IC	
	Employment for: Version: Shank type: Machine adaption: Tool adaption: Coolant: Please note: Center distance [mm]:	Main- and sub spindle right; Y-axes offset BMT Centering bolt ø 12 heimatec Capto(TM) C 3 heimatec Capto(TM) C 3 heimatec Capto(TM) C 3 heimatec Capto(TM) C 3 IC Check applicability; note tool length! 75
8 259 05 022	Multiple tool holder C 3 IC	
	Weight [kg]: Employment for: Version: Shank type: Machine adaption: Tool adaption: Coolant: Please note: Offset [mm]:	4.630 Main- and sub spindle right; Y-axes offset BMT Centering bolt ø 12 heimatec Capto(TM) C 3 heimatec Capto(TM) C 3 heimatec Capto(TM) C 3 heimatec Capto(TM) C 3 IC Check applicability; note tool length! not 54 54

Part-#	Name	
8 320 02 011	Cut-off holder, height adjustable SH 26 IC	
	Weight [kg]:	1.370
	Notation:	180° reversible
	Shank type:	BMT
	Machine adaption:	Centering bolt ø 12
	Tool adaption:	Clampshaft SH 26
	Coolant:	IC/Ext
	Pressure max [bar]:	70
8 320 02 016	Cut-off holder, height adjustable SH 26 IC	
	Weight [kg]:	1.450
	Notation:	180° reversible
	Shank type:	BMT
	Machine adaption:	Centering bolt ø 12
	Tool adaption:	Clampshaft SH 26
	Coolant:	IC/Ext
	Pressure max [bar]:	70
	Please note:	Clampshaft internal
8 320 03 019	Cut-off holder, height adjustable SH 32 IC	
	Weight [kg]:	1.720
	Version:	Special
	Shank type:	BMT
	Machine adaption:	Centering bolt ø 12
	Tool adaption:	Clampshaft SH 32
	Coolant:	IC/Ext
	Pressure max [bar]:	70
	Please note:	with offset cut-off tool holder
8 320 03 021	Cut-off holder, height adjustable SH 32 IC	
	Weight [kg]:	1.470
	Shank type:	BMT
	Machine adaption:	Centering bolt ø 12
	Tool adaption:	Clampshaft SH 32
	Coolant:	IC/Ext
	Pressure max [bar]:	70
8 320 03 026	Cut-off holder, height adjustable SH 32 IC	
	Weight [kg]:	1.620
	Notation:	180° reversible
	Shank type:	BMT
	Machine adaption:	Centering bolt ø 12
	Tool adaption:	Clampshaft SH 32
	Coolant:	IC/Ext
	Pressure max [bar]:	70
	Please note:	Clampshaft internal
8 320 09 002	Cut-off holder, height adjustable 845 IC	
	Weight [kg]:	1.380
	Notation:	180° reversible
	Shank type:	BMT
	Machine adaption:	Centering bolt ø 12
	Tool adaption:	 System 845
	Coolant:	IC
	Pressure max [bar]:	70





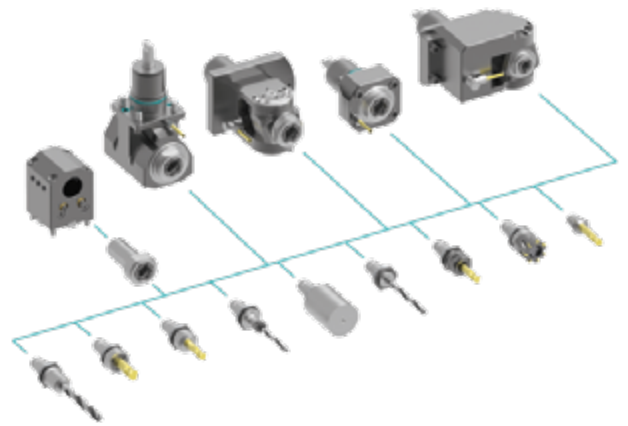
heimatec.u-tec®

heimatec.com

Products / Tool change systems /
u-tec® Tool-changing system



versions see catalog



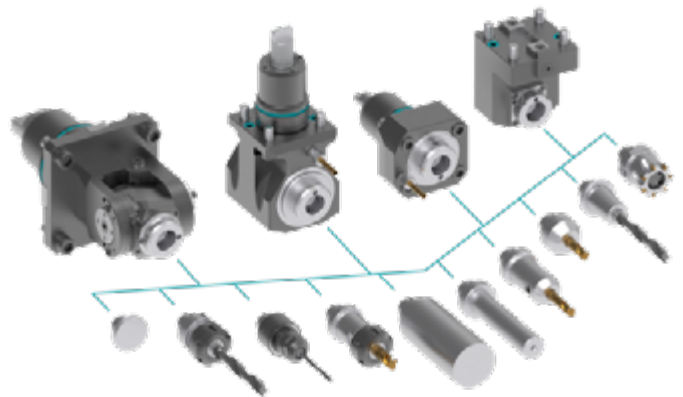
heimatec.easy-quick

heimatec.com

Products / Tool change systems /
easy-quick HT quick-changing system



versions see catalog



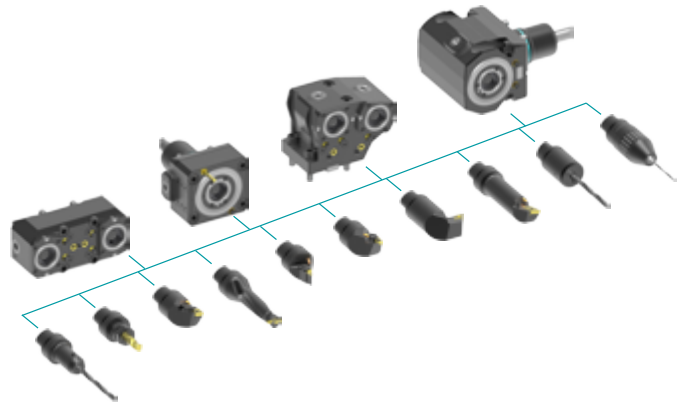
heimatec.Capto™

heimatec.com

Products / Tool change systems /
heimatec.Capto™ quick-changing system



versions see catalog



heimatec.accessories

heimatec.com

Products / Accessories



versions see catalog





● heimatec overseas branches

○ global representations of heimatec

heimatec[®]

heimatec GmbH
Präzisionswerkzeuge
Carl-Benz-Str. 4
77871 Renchen
Germany

T +49 7843 9466 0
www.heimatec.com
info@heimatec.com

Please find the contact details of our worldwide trading partners on our website:
<https://heimatec.com/business-partners>