

Takamatsu

Takamaz XT-8M
/ XT-8MY



High-tech from heimatec - heimatec - Tools and systems for productive turning and milling

heimatec belongs to the international technology and quality leaders for precision tools and specializes in the development and production of high-precision static and live tools for all CNC lathes, CNC turn-/mill machines and CNC machining centers.

The range of products* spans from static BMT and VDI tool holders, live tools up to highly complex customer-specific individual solutions. heimatec, headquartered in Renchen, has a own subsidiary in Asia and India and numerous representatives as well as trading partners all over the world.

*OUR PRODCUTS

Static tool holders

Live tool units

Precision tools

Tools for turning and machining centres

Tools for swiss type lathes

Tool changing and uick-change systems

Tool systems for gear production

Digital tool management

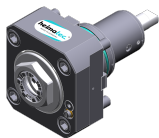
This catalogue, including all its parts, is protected by copyright. Any use outside the restricted limitations of the Copyright Act without the consent of heimatec is inadmissible and liable to prosecution. This applies in particular to duplication, translation, microfilming and storage and processing in electronic systems.

heimatec GmbH reserves the right to make technical changes at any time without giving prior notice. This applies in particular to adjustments at any time to meet new or changed international standards, or in case of further developments of our products or manufacturing processes.

The current version of our General Terms and Conditions can be found on our website.

Part-#

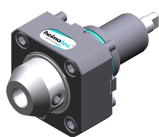
Name

8 010 55 038**Axial drilling and milling head ER 25 AX UT IC**

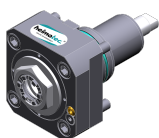
| | |
|-----------------------|------------------|
| Weight [kg]: | 3.050 |
| Tool drive: | Flat (~DIN 1809) |
| Shank size [mm]: | 55.00 |
| Shank type: | BMT |
| Tool adaption: | ER 25 A - u-tec |
| Gear ratio [i]: | 1:1 |
| Torque max [Nm]: | 50 |
| Rotation max [1/min]: | 6000 |
| Rotating direction: | same |
| Coolant: | IC/Ext |
| Pressure max [bar]: | 25 |
| Please note: | Combi bearing |

8 010 55 039**Axial drilling and milling head ER 25 AX UT**

| | |
|-----------------------|------------------|
| Notation: | 180° reversible |
| Tool drive: | Flat (~DIN 1809) |
| Shank size [mm]: | 55.00 |
| Shank type: | BMT |
| Tool adaption: | ER 25 A - u-tec |
| Gear ratio [i]: | 1:1 |
| Torque max [Nm]: | 50 |
| Rotation max [1/min]: | 12000 |
| Rotating direction: | same |
| Coolant: | EXT |
| Pressure max [bar]: | 140 |

8 010 55 051**Axial drilling and milling head Weldon 3/4"**

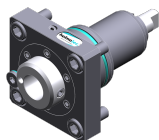
| | |
|-----------------------|------------------------------------|
| Weight [kg]: | 3.390 |
| Tool drive: | Flat (~DIN 1809) |
| Shank size [mm]: | 55.00 |
| Shank type: | BMT |
| Tool adaption: | Weldon (DIN 1835 b) 3/4" (19,05mm) |
| Gear ratio [i]: | 1:1 |
| Torque max [Nm]: | 50 |
| Rotation max [1/min]: | 6000 |
| Rotating direction: | same |
| Coolant: | EXT |
| Please note: | Combi bearing |

8 010 55 120**Axial drilling and milling head ER 25 AX UT**

| | |
|-----------------------|------------------|
| Weight [kg]: | 3.190 |
| Tool drive: | Flat (~DIN 1809) |
| Shank size [mm]: | 55.00 |
| Shank type: | BMT |
| Tool adaption: | ER 25 A - u-tec |
| Gear ratio [i]: | 1:1 |
| Torque max [Nm]: | 50 |
| Rotation max [1/min]: | 8000 |
| Rotating direction: | same |
| Coolant: | EXT |

Part-#

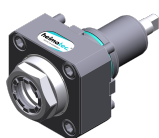
Name

8 010 56 035**Axial drilling and milling head HT 4 IC**

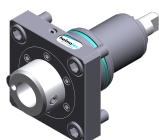
| | |
|-----------------------|------------------|
| Tool drive: | Flat (~DIN 1809) |
| Shank size [mm]: | 55.00 |
| Shank type: | BMT |
| Tool adaption: | HT 4 |
| Gear ratio [i]: | 1:1 |
| Torque max [Nm]: | 50 |
| Rotation max [1/min]: | 6000 |
| Rotating direction: | same |
| Coolant: | IC/Ext |
| Pressure max [bar]: | 25 |
| Please note: | stronger bearing |

8 010 56 039**Axial drilling and milling head ER 32 AX UT**

| | |
|-----------------------|------------------|
| Weight [kg]: | 3.200 |
| Tool drive: | Flat (~DIN 1809) |
| Shank size [mm]: | 55.00 |
| Shank type: | BMT |
| Tool adaption: | ER 32 A - u-tec |
| Gear ratio [i]: | 1:1 |
| Torque max [Nm]: | 50 |
| Rotation max [1/min]: | 6000 |
| Rotating direction: | same |
| Coolant: | EXT |
| Please note: | Combi bearing |

8 010 56 040**Axial drilling and milling head ER 32 AX UT IC**

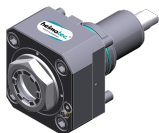
| | |
|-----------------------|------------------|
| Weight [kg]: | 3.220 |
| Tool drive: | Flat (~DIN 1809) |
| Shank size [mm]: | 55.00 |
| Shank type: | BMT |
| Tool adaption: | ER 32 A - u-tec |
| Gear ratio [i]: | 1:1 |
| Torque max [Nm]: | 50 |
| Rotation max [1/min]: | 6000 |
| Rotating direction: | same |
| Coolant: | IC/Ext |
| Pressure max [bar]: | 25 |
| Please note: | Combi bearing |

8 010 56 047**Axial drilling and milling head HT 4 IC**

| | |
|-----------------------|------------------|
| Tool drive: | Flat (~DIN 1809) |
| Shank size [mm]: | 55.00 |
| Shank type: | BMT |
| Tool adaption: | HT 4 |
| Gear ratio [i]: | 1:1 |
| Torque max [Nm]: | 50 |
| Rotation max [1/min]: | 6000 |
| Rotating direction: | same |
| Coolant: | IC/Ext |
| Pressure max [bar]: | 25 |
| Please note: | Combi bearing |

Part-#

Name

8 010 56 089**Axial drilling and milling head ER 32 AX UT IC**

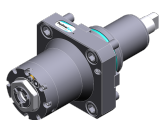
| | |
|-----------------------|------------------|
| Weight [kg]: | 3.700 |
| Tool drive: | Flat (~DIN 1809) |
| Shank size [mm]: | 55.00 |
| Shank type: | BMT |
| Tool adaption: | ER 32 A - u-tec |
| Gear ratio [i]: | 1:1 |
| Torque max [Nm]: | 50 |
| Rotation max [1/min]: | 12000 |
| Rotating direction: | same |
| Coolant: | IC/Ext |
| Pressure max [bar]: | 100 |
| Please note: | Dryrun possible |

8 010 56 119**Axial drilling and milling head C 4 IC**





| | |
|-----------------------|---|
| Notation: | 180° reversible |
| Tool drive: | Flat (~DIN 1809) |
| Shank size [mm]: | 55.00 |
| Shank type: | BMT |
| Tool adaption: | heimatec Capto(TM) C 4 |
| Gear ratio [i]: | 1:1 |
| Torque max [Nm]: | 50 |
| Rotation max [1/min]: | 6000 |
| Rotating direction: | same |
| Coolant: | IC/Ext |
| Pressure max [bar]: | 100 |
| Please note: | Check applicability; tool length check !; |

8 013 54 008**Axial drilling and milling head ER 16 AX UT**

| | |
|-----------------------|------------------|
| Weight [kg]: | 2.480 |
| Tool drive: | Flat (~DIN 1809) |
| Shank size [mm]: | 55.00 |
| Shank type: | BMT |
| Tool adaption: | ER 16 A - u-tec |
| Gear ratio [i]: | 1:4 |
| Torque max [Nm]: | 5 |
| Rotation max [1/min]: | 24000 |
| Rotating direction: | same |
| Coolant: | EXT |

8 013 54 009**Axial drilling and milling head ER 16 AX UT IC**

| | |
|-----------------------|------------------|
| Tool drive: | Flat (~DIN 1809) |
| Shank size [mm]: | 55.00 |
| Shank type: | BMT |
| Tool adaption: | ER 16 A - u-tec |
| Gear ratio [i]: | 1:4 |
| Torque max [Nm]: | 5 |
| Rotation max [1/min]: | 24000 |
| Rotating direction: | same |
| Coolant: | IC/Ext |
| Pressure max [bar]: | 100 |

| Part-# | Name | |
|---|--|-------------------------|
| 8 019 55 050 | Axial drilling and milling head ER 25 AX UT | |
|  | Weight [kg]: | 5.000 |
| | Notation: | offset; 180° reversible |
| | Tool drive: | Flat (~DIN 1809) |
| | Shank size [mm]: | 55.00 |
| | Shank type: | BMT |
| | Tool adaption: | ER 25 A - u-tec |
| | Gear ratio [i]: | 1:1 |
| | Torque max [Nm]: | 40 |
| | Rotation max [1/min]: | 8000 |
| | Rotating direction: | opposite |
| | Coolant: | EXT |
| | Please note: | stronger bearing |
| | Offset [mm]: | 42 |
| 8 019 55 051 | Axial drilling and milling head ER 25 AX UT | |
|  | Weight [kg]: | 5.010 |
| | Notation: | offset; 180° reversible |
| | Tool drive: | Flat (~DIN 1809) |
| | Shank size [mm]: | 55.00 |
| | Shank type: | BMT |
| | Tool adaption: | ER 25 A - u-tec |
| | Gear ratio [i]: | 2:1 |
| | Torque max [Nm]: | 50 |
| | Rotation max [1/min]: | 3000 |
| | Rotating direction: | opposite |
| | Coolant: | EXT |
| | Please note: | stronger bearing |
| | Offset [mm]: | 42 |
| 8 019 55 052 | Axial drilling and milling head ER 25 AX UT | |
|  | Weight [kg]: | 5.020 |
| | Notation: | offset; 180° reversible |
| | Tool drive: | Flat (~DIN 1809) |
| | Shank size [mm]: | 55.00 |
| | Shank type: | BMT |
| | Tool adaption: | ER 25 A - u-tec |
| | Gear ratio [i]: | 1:3 |
| | Torque max [Nm]: | 16 |
| | Rotation max [1/min]: | 18000 |
| | Rotating direction: | opposite |
| | Coolant: | EXT |
| | Please note: | stronger bearing |
| | Offset [mm]: | 42 |
| 8 019 55 053 | Axial drilling and milling head ER 25 AX UT | |
|  | Weight [kg]: | 4.980 |
| | Notation: | offset; 180° reversible |
| | Tool drive: | Flat (~DIN 1809) |
| | Shank size [mm]: | 55.00 |
| | Shank type: | BMT |
| | Tool adaption: | ER 25 A - u-tec |
| | Gear ratio [i]: | 1:2 |
| | Torque max [Nm]: | 25 |
| | Rotation max [1/min]: | 16000 |
| | Rotating direction: | opposite |

Part-#

Name

Coolant: EXT
Please note: stronger bearing
Offset [mm]: 42

8 019 55 054

Axial drilling and milling head ER 25 AX UT IC

Notation: offset; 180° reversible
Tool drive: Flat (~DIN 1809)
Shank size [mm]: 55.00
Shank type: BMT
Tool adaption: ER 25 A - u-tec
Gear ratio [i]: 1:1
Torque max [Nm]: 40
Rotation max [1/min]: 6000
Rotating direction: opposite
Coolant: IC/Ext
Pressure max [bar]: 140
Please note: stronger bearing
Offset [mm]: 42

8 019 55 056

Axial drilling and milling head ER 25 AX UT IC

Weight [kg]: 6.130
Notation: offset; 180° reversible
Tool drive: Flat (~DIN 1809)
Shank size [mm]: 55.00
Shank type: BMT
Tool adaption: ER 25 A - u-tec
Gear ratio [i]: 1:3
Torque max [Nm]: 16
Rotation max [1/min]: 18000
Rotating direction: opposite
Coolant: IC/Ext
Pressure max [bar]: 140
Please note: stronger bearing
Offset [mm]: 42

8 019 55 057

Axial drilling and milling head ER 25 AX UT IC

Weight [kg]: 6.060
Notation: offset; 180° reversible
Tool drive: Flat (~DIN 1809)
Shank size [mm]: 55.00
Shank type: BMT
Tool adaption: ER 25 A - u-tec
Gear ratio [i]: 1:2
Torque max [Nm]: 25
Rotation max [1/min]: 16000
Rotating direction: opposite
Coolant: IC/Ext
Pressure max [bar]: 140
Please note: stronger bearing
Offset [mm]: 42

Part-#

Name

8 030 55 175**Radial drilling and milling head ER 25 AX UT**

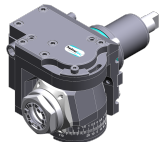
Notation: 180° reversible
 Tool drive: Flat (~DIN 1809)
 Shank size [mm]: 55.00
 Shank type: BMT
 Tool adaption: ER 25 A - u-tec
 Gear ratio [i]: 1:1
 Torque max [Nm]: 50
 Rotation max [1/min]: 12000
 Rotating direction: same
 Coolant: EXT
 Please note: stronger bearing
 Center distance [mm]: 60

8 030 55 176**Radial drilling and milling head ER 25 AX UT IC**

Weight [kg]: 6.500
 Notation: 180° reversible
 Tool drive: Flat (~DIN 1809)
 Shank size [mm]: 55.00
 Shank type: BMT
 Tool adaption: ER 25 A - u-tec
 Gear ratio [i]: 1:1
 Torque max [Nm]: 50
 Rotation max [1/min]: 12000
 Rotating direction: same
 Coolant: IC/Ext
 Pressure max [bar]: 140
 Please note: stronger bearing
 Center distance [mm]: 60

8 039 55 051**Radial drilling and milling head ER 25 AX UT**

Weight [kg]: 7.000
 Version: double spindle
 Tool drive: Flat (~DIN 1809)
 Shank size [mm]: 55.00
 Shank type: BMT
 Tool adaption: ER 25 A - u-tec
 Gear ratio [i]: 1:1
 Torque max [Nm]: 50
 Rotation max [1/min]: 12000
 Rotating direction: same/opposite
 Coolant: EXT
 Center distance [mm]: 60

8 043 55 005**Universal head +110°/-20° adj. ER25 AX UT**

Weight [kg]: 6.170
 Notation: offset, 180° reversible
 Tool drive: Flat (~DIN 1809)
 Shank size [mm]: 55.00
 Shank type: BMT
 Tool adaption: ER 25 A - u-tec
 Gear ratio [i]: 1:1
 Torque max [Nm]: 25
 Rotation max [1/min]: 6000
 Rotating direction: opposite
 Coolant: EXT

Takamatsu




Takamaz XT-8M / XT-8MY

| Part-# | Name | |
|---|--|-------------------------------|
| | Please note: | stronger bearing |
| | Center distance [mm]: | 50 |
| | Offset [mm]: | 35 |
| 8 043 55 027 | Universal head +110°/-20° adj. ER25 AX UT | |
|  | Weight [kg]: | 6.180 |
| | Notation: | offset, 180° reversible |
| | Version: | at 45° position can be pinned |
| | Tool drive: | Flat (~DIN 1809) |
| | Shank size [mm]: | 55.00 |
| | Shank type: | BMT |
| | Tool adaption: | ER 25 A - u-tec |
| | Gear ratio [i]: | 1:1 |
| | Torque max [Nm]: | 25 |
| | Rotation max [1/min]: | 6000 |
| | Rotating direction: | opposite |
| | Coolant: | EXT |
| | Please note: | stronger bearing |
| | Center distance [mm]: | 50 |
| | Offset [mm]: | 35 |
| 8 200 02 003 | Cover plate | |
|  | Weight [kg]: | 0.361 |
| | Shank size [mm]: | 55.00 |
| | Shank type: | BMT |
| 8 202 00 009 | Basic holder longitudinal seat FN 12 | |
|  | Weight [kg]: | 1.140 |
| | Notation: | 180° reversible |
| | Shank type: | BMT |
| | Machine adaption: | Centering key b 15 |
| | Tool adaption: | Interface FN 12 |
| | Coolant: | EXT |
| 8 224 03 003 | Cut-off holder SH 32 | |
|  | Weight [kg]: | 1.810 |
| | Notation: | 180° reversible |
| | Employment for: | Cut-off tool 32 |
| | Version: | Clampshaft on turret side |
| | Shank type: | BMT |
| | Machine adaption: | Centering key b 15 |
| | Tool adaption: | Clampshaft SH 32 |
| | Coolant: | EXT |
| 8 224 04 002 | Universal turning holder sq. 20 | |
|  | Weight [kg]: | 3.460 |
| | Shank type: | BMT |
| | Machine adaption: | Centering key b 15 |
| | Tool adaption: | Sq. 20 |
| | Coolant: | EXT |

| Part-# | Name | |
|---|---|------------------------------|
| 8 224 04 062 | Universal turning holder sq. 20 IC | |
|  | Weight [kg]: | 3.020 |
| | Shank type: | BMT |
| | Machine adaption: | Centering key b 15 |
| | Tool adaption: | Sq. 20 |
| | | Sq. 20 |
| | Coolant: | IC/Ext |
| | Pressure max [bar]: | 100 |
| | Please note: | Key rail |
| 8 224 05 003 | Universal turning holder sq. 25 | |
| | Weight [kg]: | 3.620 |
| | Notation: | 180° reversible |
| | Shank type: | BMT |
| | Machine adaption: | Centering key b 15 |
| | Tool adaption: | Sq. 25 |
| | Coolant: | EXT |
| 8 224 05 005 | Universal turning holder sq. 1" | |
|  | Weight [kg]: | 3.560 |
| | Shank type: | BMT |
| | Machine adaption: | Centering key b 15 |
| | Tool adaption: | Sq. 1" (25,4mm) |
| | Coolant: | EXT |
| 8 224 05 015 | Universal turning holder sq. 25/20 | |
|  | Weight [kg]: | 3.780 |
| | Notation: | 180° reversible |
| | Shank type: | BMT |
| | Machine adaption: | Centering key b 15 |
| | Tool adaption: | Sq. 25/20 |
| | Coolant: | EXT |
| | Pressure max [bar]: | 80 |
| | Please note: | with spacer strip for sq. 20 |
| 8 224 05 023 | Universal turning holder sq. 25/20 | |
|  | Weight [kg]: | 3.150 |
| | Notation: | 180° reversible |
| | Shank type: | BMT |
| | Machine adaption: | Centering key b 15 |
| | Tool adaption: | Sq. 25/20 |
| | Coolant: | EXT |
| | Please note: | with spacer strip for sq. 20 |
| 8 240 07 024 | Boring bar holder Ø 1 1/4" | |
|  | Weight [kg]: | 5.760 |
| | Notation: | 180° reversible |
| | Employment for: | Main- and sub spindle |
| | Shank type: | BMT |
| | Machine adaption: | Centering key b 15 |
| | Tool adaption: | Ø 1 1/4" (31,75mm) |
| | Coolant: | IC/Ext |
| | Center distance [mm]: | 70 |

| Part-# | Name | |
|---|-----------------------------------|-----------------------|
| 8 240 07 069 | Boring bar holder Ø 25 | |
|  | Notation: | 180° reversible |
| | Employment for: | Main- and sub spindle |
| | Shank type: | BMT |
| | Machine adaption: | Centering key b 15 |
| | Tool adaption: | Ø 25 |
| | Coolant: | IC/Ext |
| | Center distance [mm]: | 70 |
| 8 240 08 002 | Boring bar holder Ø 32 | |
|  | Weight [kg]: | 5.810 |
| | Notation: | 180° reversible |
| | Employment for: | Main- and sub spindle |
| | Shank type: | BMT |
| | Machine adaption: | Centering key b 15 |
| | Tool adaption: | Ø 32 |
| | Coolant: | IC/Ext |
| | Center distance [mm]: | 70 |
| 8 240 08 009 | Boring bar holder Ø 1 1/2" | |
|  | Weight [kg]: | 5.470 |
| | Notation: | 180° reversible |
| | Employment for: | Main- and sub spindle |
| | Shank type: | BMT |
| | Machine adaption: | Centering key b 15 |
| | Tool adaption: | Ø 1 1/2" (38,1mm) |
| | Coolant: | IC/Ext |
| | Center distance [mm]: | 70 |
| 8 240 08 061 | Boring bar holder Ø 32 | |
|  | Weight [kg]: | 6.490 |
| | Notation: | 180° reversible |
| | Employment for: | Main- and sub spindle |
| | Shank type: | BMT |
| | Machine adaption: | Centering key b 15 |
| | Tool adaption: | Ø 32 |
| | Coolant: | IC/Ext |
| | Center distance [mm]: | 80 |
| 8 240 09 009 | Boring bar holder Ø 40 | |
| | Weight [kg]: | 5.640 |
| | Notation: | 180° reversible |
| | Employment for: | Main- and sub spindle |
| | Shank type: | BMT |
| | Machine adaption: | Centering key b 15 |
| | Tool adaption: | Ø 40 |
| | Coolant: | IC/Ext |
| | Pressure max [bar]: | 80 |
| | Center distance [mm]: | 70 |

| Part-# | Name | |
|---|---|---------------------------------------|
| 8 244 05 003 | Combi facing holder sq. 25 | |
|  | Weight [kg]: | 5.340 |
| | Notation: | 180° reversible |
| | Employment for: | Main- and sub spindle |
| | Shank type: | BMT |
| | Machine adaption: | Centering key b 15 |
| | Tool adaption: | Sq. 25 |
| | Coolant: | EXT |
| | Pressure max [bar]: | 80 |
| 8 244 05 006 | Combi facing holder sq. 1" | |
|  | Weight [kg]: | 5.310 |
| | Notation: | 180° reversible |
| | Employment for: | Main- and sub spindle |
| | Shank type: | BMT |
| | Machine adaption: | Centering key b 15 |
| | Tool adaption: | Sq. 1" (25,4mm) |
| | Coolant: | EXT |
| 8 251 05 001 | Combi double turning holder sq. 25 | |
|  | Weight [kg]: | 7.700 |
| | Employment for: | Main- and sub spindle |
| | Shank type: | BMT |
| | Machine adaption: | Centering key b 15 |
| | Tool adaption: | Sq. 25 Sq. 25 Sq. 25 Sq. 25 |
| | Coolant: | EXT |
| | Pressure max [bar]: | 80 |
| 8 253 07 011 | Double boring bar holder Ø 25 | |
|  | Weight [kg]: | 6.770 |
| | Notation: | 180° reversible |
| | Employment for: | Main- and sub spindle |
| | Shank type: | BMT |
| | Machine adaption: | Centering key b 15 |
| | Tool adaption: | Ø 25 Ø 25 |
| | Coolant: | IC/Ext |
| | Pressure max [bar]: | 80 |
| | Please note: | Check applicability; note tool length |
| | Center distance [mm]: | 52/97 |
| 8 253 07 031 | Double boring bar holder Ø 1" | |
|  | Weight [kg]: | 7.620 |
| | Notation: | 180° reversible |
| | Employment for: | Main- and sub spindle |
| | Shank type: | BMT |
| | Machine adaption: | Centering key b 15 |
| | Tool adaption: | Ø 1" (25,4mm) Ø 1" (25,4mm) |
| | Coolant: | IC/Ext |
| | Center distance [mm]: | 52/97 |

| Part-# | Name | |
|--|--|---|
| 8 253 07 042  | Multiple boring bar holder Ø 1" Weight [kg]: Employment for: Shank type: Machine adaption: Tool adaption: Coolant: Center distance [mm]: | 8.840 Main- and sub spindle BMT Centering key b 15 Ø 1" Ø 1" IC/Ext 47/90 |
| | 8 253 07 047 Double boring bar holder Ø 25 Weight [kg]: Notation: Employment for: Shank type: Machine adaption: Tool adaption: Coolant: Center distance [mm]: | 6.940 180° reversible Main- and sub spindle BMT Centering key b 15 Ø 25 Ø 25 IC/Ext 44/87 |
| 8 253 08 002 Double boring bar holder Ø 32 Weight [kg]: Notation: Employment for: Shank type: Machine adaption: Tool adaption: Coolant: Center distance [mm]: | 6.340 180° reversible Main- and sub spindle BMT Centering key b 15 Ø 32 Ø 32 IC/Ext 44/87 | |
| 8 259 04 007  | Multiple turning holder sq. 20 Weight [kg]: Notation: Employment for: Version: Shank type: Machine adaption: Tool adaption: Coolant: | 8.180 180° reversible Main- and sub spindle Special BMT Centering key b 15 Sq. 20 Sq. 20 Sq. 20 IC/Ext |
| | 8 320 03 025  | Cut-off holder, height adjustable SH 32 IC Weight [kg]: Notation: Shank type: Machine adaption: Tool adaption: Coolant: Pressure max [bar]: Please note: |



heimatec.u-tec®

heimatec.com

Products / Tool change systems /
u-tec® Tool-changing system



versions see catalog



heimatec.easy-quick

heimatec.com

Products / Tool change systems /
easy-quick HT quick-changing system



versions see catalog



heimatec.Capto™

heimatec.com

Products / Tool change systems /
heimatec.Capto™ quick-changing system



versions see catalog



heimatec.accessories

heimatec.com

Products / Accessories



versions see catalog





● heimatec overseas branches

○ global representations of heimatec

heimatec[®]

heimatec GmbH
Präzisionswerkzeuge
Carl-Benz-Str. 4
77871 Renchen
Germany

T +49 7843 9466 0
www.heimatec.com
info@heimatec.com

Please find the contact details of our worldwide trading partners on our website:
<https://heimatec.com/business-partners>