

TOPSELLER -
many more available!

Live Tools

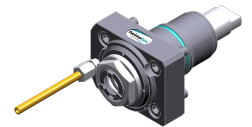
heimatec®

Nakamura

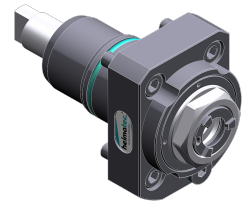
WT-100 oberer Revolver (24 Stationen)

Part-#	Tool adaption	Rotation max [1/min]	Gear ratio	Coolant	Pressure max.	Center distance
Axial drilling and milling head						
8 010 44 091	ER 20 A - u-tec	12.000	1:1	EXT	--	--
8 010 44 092	ER 20 A - u-tec	12.000	1:1	IC/Ext	25 bar	--
8 010 44 093	ER 20 A - u-tec	12.000	1:1	IC/Ext	100 bar	--
8 010 45 208	ER 25 A - u-tec	12.000	1:1	EXT	--	--
8 010 45 209	ER 25 A - u-tec	12.000	1:1	IC/Ext	25 bar	--
8 010 45 210	ER 25 A - u-tec	15.000	1:1	IC/Ext	100 bar	--
Radial drilling and milling head						
8 030 44 225	ER 20 A - u-tec	12.000	1:1	EXT	--	60 mm
8 030 44 226	ER 20 A - u-tec	12.000	1:1	IC/Ext	140 bar	60 mm
8 030 45 574	ER 25 A - u-tec	12.000	1:1	EXT	--	60 mm
8 030 45 575	ER 25 A - u-tec	12.000	1:1	IC/Ext	140 bar	60 mm
Radial drilling and milling head, double spindle						
8 039 44 094	ER 20 A - u-tec	12.000	1:1	EXT	--	60 mm
8 039 45 009	ER 25 A - u-tec	12.000	1:1	EXT	--	60 mm
Universal head						
8 040 44 110	ER 16 A - u-tec	12.000	1:1	EXT	--	58 mm
8 040 44 111	ER 16 A - u-tec	12.000	1:1	IC/Ext	140 bar	58 mm
Universal head, offset						
8 043 44 001	ER 16	6.000	1:1	EXT	--	25 mm
8 043 44 051	ER 16 A - u-tec	12.000	1:1	EXT	--	25 mm
8 043 44 052	ER 16 A - u-tec	12.000	1:1	IC/Ext	140 bar	25 mm

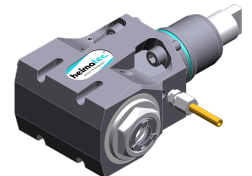
Illustrations similar.



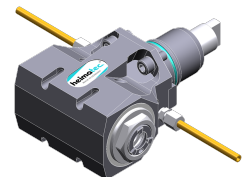
8 010 44 091



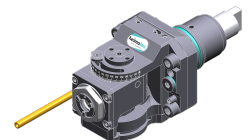
8 010 44 092



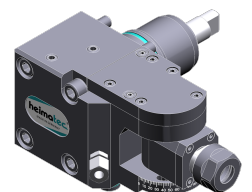
8 030 44 225



8 039 44 094



8 040 44 110



8 043 44 001

TOPSELLER -
many more available!

Static Tools

heimatec®

Nakamura

WT-100 oberer Revolver (24 Stationen)

Part-#	Tool adaption	Coolant	Pressure max.	Center distance
Cut-off holder				
8 224 12 009	Clampshaft SH 26	EXT	--	--
8 224 13 006	Clampshaft SH 32	EXT	--	--
8 224 11 013	Sq. 20	EXT	--	--
Universal turning holder				
8 224 14 007	Sq. 20	EXT	--	--
8 224 14 024	Sq. 20	IC/Ext	100 bar	--
Boring bar holder				
8 240 16 007	Ø 20	IC/Ext	--	75 mm
8 240 17 020	Ø 25	IC/Ext	--	75 mm
8 240 17 086	Ø 25	IC/Ext	--	75 mm
8 240 18 025	Ø 32	IC/Ext	--	75 mm
8 240 18 076	Ø 32	IC/Ext	--	75 mm
Facing holder				
8 244 11 003	Sq. 20	EXT	--	--
Double turning holder				
8 251 11 004	Sq. 20	EXT	--	--
8 251 14 099	Sq. 20	IC/Ext	100 bar	--
Combi multiple holder				
8 251 14 107	Sq. 20	IC/Ext	100 bar	--
Multiple boring bar holder				
8 253 17 020	Ø 25	IC/Ext	--	75 mm
Multiple turning holder				
8 259 11 002	Sq. 20	EXT	--	--

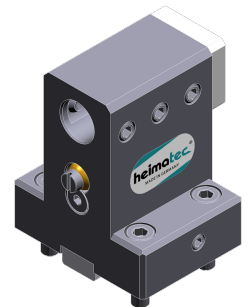
Illustrations similar.



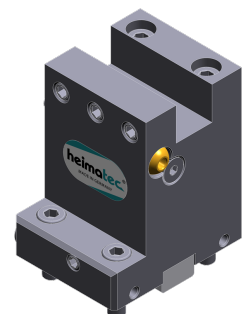
8 224 12 009



8 224 14 007



8 240 16 007



8 244 11 003

TOPSELLER -
many more available!

Static Tools

heimatec®

Nakamura

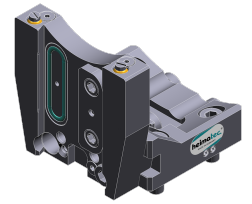
WT-100 oberer Revolver (24 Stationen)

Part-#	Tool adaption	Coolant	Pressure max.	Center distance
--------	---------------	---------	---------------	-----------------

Cut-off holder, height adjustable

8 320 13 003	Clampshaft SH 32	IC/Ext	70 bar	--
--------------	-------------------------	--------	--------	----

Illustrations similar.



8 320 13 003