

Muratec
MT 12



High-tech from heimatec - heimatec - Tools and systems for productive turning and milling

heimatec belongs to the international technology and quality leaders for precision tools and specializes in the development and production of high-precision static and live tools for all CNC lathes, CNC turn-/mill machines and CNC machining centers.

The range of products* spans from static BMT and VDI tool holders, live tools up to highly complex customer-specific individual solutions. heimatec, headquartered in Renchen, has a own subsidiary in Asia and India and numerous representatives as well as trading partners all over the world.

*OUR PRODCUTS

Static tool holders

Live tool units

Precision tools

Tools for turning and machining centres

Tools for swiss type lathes

Tool changing and uick-change systems





Tool systems for gear production



Digital tool management

This catalogue, including all its parts, is protected by copyright. Any use outside the restricted limitations of the Copyright Act without the consent of heimatec is inadmissible and liable to prosecution. This applies in particular to duplication, translation, microfilming and storage and processing in electronic systems.

heimatec GmbH reserves the right to make technical changes at any time without giving prior notice. This applies in particular to adjustments at any time to meet new or changed international standards, or in case of further developments of our products or manufacturing processes.

The current version of our General Terms and Conditions can be found on our website.

Part-#	Name	
8 010 45 174	Axial drilling and milling head ER 25 AX UT	
	Tool drive:	Flat (~DIN 1809)
	Shank size [mm]:	40.00
	Shank type:	BMT
	Tool adaption:	ER 25 A - u-tec
	Gear ratio [i]:	1:1
	Torque max [Nm]:	50
	Rotation max [1/min]:	6000
	Rotating direction:	same
	Coolant:	EXT
8 010 45 223	Axial milling and drill holder Weldon 5/8"	
	Weight [kg]:	3.700
	Tool drive:	Flat (~DIN 1809)
	Shank size [mm]:	40.00
	Shank type:	BMT
	Tool adaption:	Weldon (DIN 1835 b) 5/8" (15,875mm)
	Gear ratio [i]:	1:1
	Torque max [Nm]:	50
	Rotation max [1/min]:	6000
	Rotating direction:	same
	Coolant:	EXT
	Please note:	Taper roller bearings
8 010 46 220	Axial drilling and milling head ER 32 AX UT IC	
	Weight [kg]:	2.980
	Tool drive:	Flat (~DIN 1809)
	Shank size [mm]:	40.00
	Shank type:	BMT
	Tool adaption:	ER 32 A - u-tec
	Gear ratio [i]:	1:1
	Torque max [Nm]:	50
	Rotation max [1/min]:	6000
	Rotating direction:	same
	Coolant:	IC/Ext
	Pressure max [bar]:	25
8 010 46 266	Axial drilling and milling head ER 32 AX UT	
	Weight [kg]:	2.400
	Tool drive:	Flat (~DIN 1809)
	Shank size [mm]:	40.00
	Shank type:	BMT
	Tool adaption:	ER 32 A - u-tec
	Gear ratio [i]:	1:1
	Torque max [Nm]:	50
	Rotation max [1/min]:	6000
	Rotating direction:	same
	Coolant:	EXT
8 010 46 326	Axial milling and drill holder ER 32 AX UT	
	Weight [kg]:	3.380
	Tool drive:	Flat (~DIN 1809)
	Shank size [mm]:	40.00
	Shank type:	BMT
	Tool adaption:	ER 32 A - u-tec
	Gear ratio [i]:	1:1

Part-#	Name	
	Torque max [Nm]:	50
	Rotation max [1/min]:	6000
	Rotating direction:	same
	Coolant:	EXT
	Please note:	Taper roller bearings
8 019 45 060	Axial drilling and milling head ER 25	
	Weight [kg]:	5.780
	Tool drive:	Flat (~DIN 1809)
	Shank size [mm]:	40.00
	Shank type:	BMT
	Tool adaption:	ER 25
	Gear ratio [i]:	1:2
	Torque max [Nm]:	16
	Rotation max [1/min]:	12000
	Rotating direction:	opposite
	Coolant:	EXT
	Offset [mm]:	50
8 019 45 197	Axial drilling and milling head ER 25 AX UT	
	Notation:	offset; 180° reversible
	Tool drive:	Flat (~DIN 1809)
	Shank size [mm]:	40.00
	Shank type:	BMT
	Tool adaption:	ER 25 A - u-tec
	Gear ratio [i]:	1:1
	Torque max [Nm]:	50
	Rotation max [1/min]:	6000
	Rotating direction:	same
	Coolant:	EXT
	Please note:	stronger bearing
	Offset [mm]:	72
8 019 45 198	Axial drilling and milling head ER 25 AX UT IC	
	Notation:	offset; 180° reversible
	Tool drive:	Flat (~DIN 1809)
	Shank size [mm]:	40.00
	Shank type:	BMT
	Tool adaption:	ER 25 A - u-tec
	Gear ratio [i]:	1:1
	Torque max [Nm]:	50
	Rotation max [1/min]:	6000
	Rotating direction:	same
	Coolant:	IC/Ext
	Pressure max [bar]:	140
	Please note:	stronger bearing
	Offset [mm]:	72
8 030 45 077	Radial head ER 25	
	Tool drive:	Flat (~DIN 1809)
	Shank size [mm]:	40.00
	Shank type:	BMT
	Tool adaption:	ER 25
	Gear ratio [i]:	1:3
	Torque max [Nm]:	8
	Rotation max [1/min]:	12000
	Rotating direction:	opposite

Part-#	Name
--------	------

Coolant: EXT
Center distance [mm]: 100

8 030 45 127 Radial drilling and milling head ER 25

Weight [kg]: 7.520
Tool drive: Flat (~DIN 1809)
Shank size [mm]: 40.00
Shank type: BMT
Tool adaption: ER 25
Gear ratio [i]: 1:3
Torque max [Nm]: 12
Rotation max [1/min]: 12000
Rotating direction: same
Coolant: EXT
Please note: stronger bearing
Center distance [mm]: 116

8 030 46 124 Radial drilling and milling head Weldon 20 IC

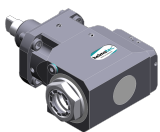
Tool drive: Flat (~DIN 1809)
Shank size [mm]: 40.00
Shank type: BMT
Tool adaption: Weldon (DIN 1835 b) 20
Gear ratio [i]: 1:1
Torque max [Nm]: 50
Rotation max [1/min]: 6000
Rotating direction: opposite
Coolant: IC/Ext
Pressure max [bar]: 25
Please note: stronger bearing
Center distance [mm]: 100

8 030 46 374 Radial drilling and milling head ER 32 AX UT



Notation: 180° reversible
Tool drive: Flat (~DIN 1809)
Shank size [mm]: 40.00
Shank type: BMT
Tool adaption: ER 32 A - u-tec
Gear ratio [i]: 1:1
Torque max [Nm]: 50
Rotation max [1/min]: 6000
Rotating direction: opposite
Coolant: EXT
Please note: Combi bearing
Center distance [mm]: 100

8 030 46 402 Radial drilling and milling head ER 32 AX UT IC



Weight [kg]: 7.500
Tool drive: Flat (~DIN 1809)
Shank size [mm]: 40.00
Shank type: BMT
Tool adaption: ER 32 A - u-tec
Gear ratio [i]: 1:1
Torque max [Nm]: 50
Rotation max [1/min]: 6000
Rotating direction: opposite
Coolant: IC/Ext
Pressure max [bar]: 140

Part-#	Name	
	Please note:	Combi bearing
	Center distance [mm]:	100
8 030 46 532	Radial drilling and milling head Weldon 20 IC	
	Tool drive:	Flat (~DIN 1809)
	Shank size [mm]:	40.00
	Shank type:	BMT
	Tool adaption:	Weldon (DIN 1835 b) 20
	Gear ratio [i]:	1:1
	Torque max [Nm]:	50
	Rotation max [1/min]:	6000
	Rotating direction:	opposite
	Coolant:	IC/Ext
	Pressure max [bar]:	140
	Please note:	Combi bearing
	Center distance [mm]:	100
8 040 44 022	Universal head ± 90° adjustable ER 16	
	Weight [kg]:	3.800
	Tool drive:	Flat (~DIN 1809)
	Shank size [mm]:	40.00
	Shank type:	BMT
	Tool adaption:	ER 16
	Gear ratio [i]:	1:1
	Torque max [Nm]:	10
	Rotation max [1/min]:	4000
	Rotating direction:	same
	Coolant:	EXT
	Center distance [mm]:	81
8 202 40 011	Basic holder longitudinal seat FN 12	
	Weight [kg]:	2.050
	Shank size [mm]:	40.00
	Shank type:	BMT
	Tool adaption:	Interface FN 12
	Coolant:	EXT
	Center distance [mm]:	40
8 214 44 006	Universal turning holder sq. 20	
	Weight [kg]:	3.580
	Notation:	180° reversible
	Shank size [mm]:	40.00
	Shank type:	BMT
	Tool adaption:	Sq. 20
	Coolant:	EXT
8 234 44 012	Combi facing holder sq. 20	
	Weight [kg]:	4.920
	Notation:	180° reversible
	Shank size [mm]:	40.00
	Shank type:	BMT
	Tool adaption:	Sq. 20
		Sq. 20
	Coolant:	EXT
	Center distance [mm]:	70

Part-#	Name	
8 239 48 022	Double boring bar holder Ø 32	
	Weight [kg]:	6.230
	Shank size [mm]:	40.00
	Shank type:	BMT
	Tool adaption:	Ø 32
	Coolant:	IC/Ext
	Center distance [mm]:	95
8 251 44 002	Combi double turning holder sq. 20	
	Weight [kg]:	5.890
	Employment for:	Main- and sub spindle
	Shank size [mm]:	40.00
	Shank type:	BMT
	Tool adaption:	Sq. 20
		Sq. 20
		Sq. 20
		Sq. 20
	Coolant:	EXT
8 259 41 000	Multiple turning holder sq. 20/ 3/4"	
	Notation:	180° reversible
	Version:	Y-axes offset
	Shank size [mm]:	40.00
	Shank type:	BMT
	Tool adaption:	Sq. 20/ 3/4" (19,05)
		Sq. 20/ 3/4" (19,05)
	Coolant:	EXT
8 320 43 012	Cut-off holder, height adjustable SH 32 IC	
	Weight [kg]:	2.670
	Shank size [mm]:	40.00
	Shank type:	BMT
	Tool adaption:	Clampshaft SH 32
	Coolant:	IC/Ext
	Pressure max [bar]:	70



● heimatec overseas branches

○ global representations of heimatec

heimatec[®]

heimatec GmbH
Präzisionswerkzeuge
Carl-Benz-Str. 4
77871 Renchen
Germany

T +49 7843 9466 0
www.heimatec.com
info@heimatec.com

Please find the contact details of our worldwide trading partners on our website:
<https://heimatec.com/business-partners>