

Takamatsu

Takamaz XY-120



High-tech from heimatec - heimatec - Tools and systems for productive turning and milling

heimatec belongs to the international technology and quality leaders for precision tools and specializes in the development and production of high-precision static and live tools for all CNC lathes, CNC turn-/mill machines and CNC machining centers.

The range of products* spans from static BMT and VDI tool holders, live tools up to highly complex customer-specific individual solutions. heimatec, headquartered in Renchen, has a own subsidiary in Asia and India and numerous representatives as well as trading partners all over the world.

*OUR PRODCUTS

Static tool holders

Live tool units

Precision tools

Tools for turning and machining centres

Tools for swiss type lathes

Tool changing and uick-change systems

Tool systems for gear production

Digital tool management

This catalogue, including all its parts, is protected by copyright. Any use outside the restricted limitations of the Copyright Act without the consent of heimatec is inadmissible and liable to prosecution. This applies in particular to duplication, translation, microfilming and storage and processing in electronic systems.

heimatec GmbH reserves the right to make technical changes at any time without giving prior notice. This applies in particular to adjustments at any time to meet new or changed international standards, or in case of further developments of our products or manufacturing processes.

The current version of our General Terms and Conditions can be found on our website.

Part-#

Name

8 010 24 078

Axial drilling and milling head ER 20 AX UT



Weight [kg]: 2.940
 Tool drive: Flat (~DIN 1809)
 Shank size [mm]: 30.00
 Shank type: BMT
 Tool adaption: ER 20 A - u-tec
 Gear ratio [i]: 1:1
 Torque max [Nm]: 25
 Rotation max [1/min]: 6000
 Rotating direction: same
 Coolant: EXT
 Please note: stronger bearing

8 010 24 079

Axial drilling and milling head ER 20 AX UT IC



Weight [kg]: 3.940
 Tool drive: Flat (~DIN 1809)
 Shank size [mm]: 30.00
 Shank type: BMT
 Tool adaption: ER 20 A - u-tec
 Gear ratio [i]: 1:1
 Torque max [Nm]: 25
 Rotation max [1/min]: 6000
 Rotating direction: same
 Coolant: IC/Ext
 Pressure max [bar]: 25
 Please note: stronger bearing

8 010 25 139

Axial drilling and milling head ER 25 AX UT IC



Weight [kg]: 3.920
 Tool drive: Flat (~DIN 1809)
 Shank size [mm]: 30.00
 Shank type: BMT
 Tool adaption: ER 25 A - u-tec
 Gear ratio [i]: 1:1
 Torque max [Nm]: 25
 Rotation max [1/min]: 6000
 Rotating direction: same
 Coolant: IC/Ext
 Pressure max [bar]: 25
 Please note: stronger bearing

8 013 24 033

Axial drilling and milling head ER 16 AX UT



Weight [kg]: 2.230
 Tool drive: Flat (~DIN 1809)
 Shank size [mm]: 30.00
 Shank type: BMT
 Tool adaption: ER 16 A - u-tec
 Gear ratio [i]: 1:4
 Torque max [Nm]: 5
 Rotation max [1/min]: 24000
 Rotating direction: same
 Coolant: EXT

Part-#	Name
--------	------

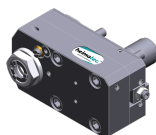
8 019 24 059



Axial drilling and milling head ER 20 AX UT

Weight [kg]: 4.920
 Notation: offset; 180° reversible
 Tool drive: Flat (~DIN 1809)
 Shank size [mm]: 30.00
 Shank type: BMT
 Tool adaption: ER 20 A - u-tec
 Gear ratio [i]: 1:1
 Torque max [Nm]: 25
 Rotation max [1/min]: 6000
 Rotating direction: same
 Coolant: EXT
 Offset [mm]: 70

8 019 24 061



Axial drilling and milling head ER 20 AX UT IC

Weight [kg]: 5.070
 Notation: offset; 180° reversible
 Tool drive: Flat (~DIN 1809)
 Shank size [mm]: 30.00
 Shank type: BMT
 Tool adaption: ER 20 A - u-tec
 Gear ratio [i]: 1:2
 Torque max [Nm]: 16
 Rotation max [1/min]: 12000
 Rotating direction: opposite
 Coolant: IC/Ext
 Pressure max [bar]: 140
 Offset [mm]: 70

8 030 24 154



Radial drilling and milling head ER 20 AX UT

Weight [kg]: 4.120
 Notation: 180° reversible
 Tool drive: Flat (~DIN 1809)
 Shank size [mm]: 30.00
 Shank type: BMT
 Tool adaption: ER 20 A - u-tec
 Gear ratio [i]: 1:1
 Torque max [Nm]: 25
 Rotation max [1/min]: 6000
 Rotating direction: opposite
 Coolant: EXT
 Please note: Combi bearing
 Center distance [mm]: 75

8 030 24 155



Radial drilling and milling head ER 20 AX UT IC

Weight [kg]: 4.420
 Notation: 180° reversible
 Tool drive: Flat (~DIN 1809)
 Shank size [mm]: 30.00
 Shank type: BMT
 Tool adaption: ER 20 A - u-tec
 Gear ratio [i]: 1:1
 Torque max [Nm]: 25
 Rotation max [1/min]: 6000
 Rotating direction: opposite
 Coolant: IC/Ext

Part-#

Name

Pressure max [bar]: 140
Please note: Combi bearing
Center distance [mm]: 75

8 030 25 299 Radial drilling and milling head ER 25 AX UT



Notation: 180° reversible
Tool drive: Flat (~DIN 1809)
Shank size [mm]: 30.00
Shank type: BMT
Tool adaption: ER 25 A - u-tec
Gear ratio [i]: 1:1
Torque max [Nm]: 25
Rotation max [1/min]: 6000
Rotating direction: opposite
Coolant: EXT
Please note: Combi bearing
Center distance [mm]: 75

8 030 25 300 Radial drilling and milling head ER 25 AX UT IC



Weight [kg]: 4.580
Notation: 180° reversible
Tool drive: Flat (~DIN 1809)
Shank size [mm]: 30.00
Shank type: BMT
Tool adaption: ER 25 A - u-tec
Gear ratio [i]: 1:1
Torque max [Nm]: 25
Rotation max [1/min]: 6000
Rotating direction: opposite
Coolant: IC/Ext
Pressure max [bar]: 140
Please note: Combi bearing
Center distance [mm]: 75

8 030 26 146 Radial drilling and milling head HT 4

Notation: 180° reversible
Tool drive: Flat (~DIN 1809)
Shank size [mm]: 30.00
Shank type: BMT
Tool adaption: HT 4
Gear ratio [i]: 1:1
Torque max [Nm]: 25
Rotation max [1/min]: 6000
Rotating direction: opposite
Coolant: EXT
Please note: Combi bearing
Center distance [mm]: 75

8 030 26 147 Radial drilling and milling head HT 4 IC

Notation: 180° reversible
Tool drive: Flat (~DIN 1809)
Shank size [mm]: 30.00
Shank type: BMT
Tool adaption: HT 4
Gear ratio [i]: 1:1
Torque max [Nm]: 25
Rotation max [1/min]: 6000

Takamatsu

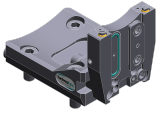
Takamaz XY-120

Part-#	Name	
	Rotating direction:	opposite
	Coolant:	IC/Ext
	Pressure max [bar]:	140
	Please note:	Combi bearing
	Center distance [mm]:	75
8 202 00 023	Basic holder longitudinal seat FN 12	
	Notation:	180° reversible
	Shank type:	BMT
	Machine adaption:	Centering key b 12
	Tool adaption:	Interface FN 12
	Coolant:	EXT
	Center distance [mm]:	20
8 224 02 005	Cut-off holder sq. 25	
	Weight [kg]:	3.110
	Shank type:	BMT
	Machine adaption:	Centering key b 12
	Tool adaption:	Sq. 25
	Coolant:	EXT
8 224 04 025	Universal turning holder sq. 20	
	Weight [kg]:	2.880
	Shank type:	BMT
	Machine adaption:	Centering key b 12
	Tool adaption:	Sq. 20
	Coolant:	EXT
8 240 07 026	Boring bar holder Ø 25	
	Weight [kg]:	4.010
	Shank type:	BMT
	Machine adaption:	Centering key b 12
	Tool adaption:	Ø 25
	Coolant:	IC/Ext
	Center distance [mm]:	80
8 244 04 008	Combi facing holder sq. 20	
	Weight [kg]:	5.650
	Shank type:	BMT
	Machine adaption:	Centering key b 12
	Tool adaption:	Sq. 20
	Coolant:	EXT
8 251 04 023	Combi double turning holder sq. 20	
	Weight [kg]:	6.210
	Employment for:	Main- and sub spindle
	Shank type:	BMT
	Machine adaption:	Centering key b 12
	Tool adaption:	Sq. 20
	Coolant:	EXT

Takamatsu
Takamaz XY-120

Part-#	Name
--------	------

8 320 02 033 **Cut-off holder, height adjustable SH 26 IC**



Notation:	180° reversible
Shank type:	BMT
Machine adaption:	Centering key b 12
Tool adaption:	Clampshaft SH 26
Coolant:	IC/Ext
Pressure max [bar]:	70



● heimatec overseas branches

○ global representations of heimatec

heimatec[®]

heimatec GmbH
Präzisionswerkzeuge
Carl-Benz-Str. 4
77871 Renchen
Germany

T +49 7843 9466 0
www.heimatec.com
info@heimatec.com

Please find the contact details of our worldwide trading partners on our website:
<https://heimatec.com/business-partners>