

**TOPSELLER -**  
many more available!

Live Tools

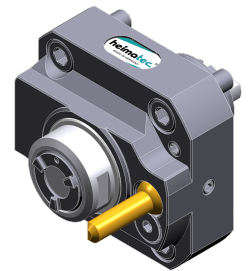
heimatec®

# Miyano

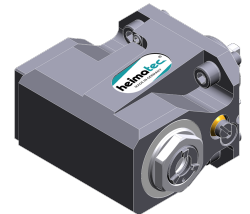
## BNA 42 DHY

Part-#	Tool adaption	Rotation max [1/min]	Gear ratio	Coolant	Pressure max.	Center distance
<b>Axial drilling and milling head</b>						
8 010 34 017	<b>ER 16 A - u-tec</b>	6.000	1:1	EXT	--	--
8 010 34 018	<b>ER 16 A - u-tec</b>	6.000	1:1	IC/Ext	25 bar	--
8 010 34 023	<b>ER 16 A - u-tec</b>	12.000	1:1	IC/Ext	100 bar	--
8 010 34 022	<b>ER 20 A - u-tec</b>	6.000	1:1	EXT	--	--
8 010 34 025	<b>ER 20 A - u-tec</b>	12.000	1:1	IC/Ext	100 bar	--
8 010 34 026	<b>ER 20 A - u-tec</b>	6.000	1:1	IC/Ext	25 bar	--
<b>Radial drilling and milling head</b>						
8 030 34 048	<b>ER 16 A - u-tec</b>	12.000	1:1	IC/Ext	140 bar	<b>59 mm</b>
8 030 34 049	<b>ER 16 A - u-tec</b>	12.000	1:1	EXT	--	<b>59 mm</b>
8 030 34 045	<b>ER 20 A - u-tec</b>	12.000	1:1	IC/Ext	140 bar	<b>59 mm</b>
8 030 34 046	<b>ER 20 A - u-tec</b>	12.000	1:1	EXT	--	<b>59 mm</b>
<b>Radial drilling and milling head, double spindle</b>						
8 039 34 006	<b>ER 16 u-tec</b>	12.000	1:1	EXT	--	<b>59 mm</b>
<b>Universal head, offset</b>						
8 043 34 002	<b>ER 16 A - u-tec</b>	6.000	1:1	EXT	140 bar	<b>50 mm</b>
8 043 34 003	<b>ER 16 A - u-tec</b>	6.000	1:1	IC/Ext	25 bar	<b>50 mm</b>
8 043 34 004	<b>ER 16 A - u-tec</b>	12.000	1:2	EXT	--	<b>50 mm</b>
8 043 34 012	<b>ER 16 A - u-tec</b>	12.000	1:2	EXT	140 bar	<b>66 mm</b>
<b>Multispindle drilling head</b>						
8 050 34 000	<b>ER 16 A - u-tec</b>	6.000	1:1	EXT	--	--
8 050 34 003	<b>ER 16 A - u-tec</b>	6.000	1:1	IC/Ext	140 bar	--

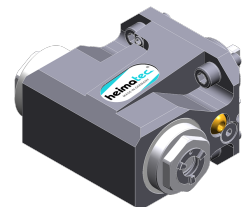
Illustrations similar.



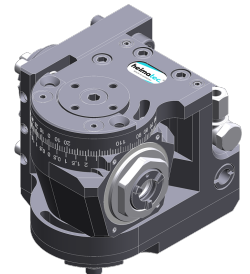
8 010 34 017



8 030 34 048



8 039 34 006



8 043 34 002

**TOPSELLER -**  
many more available!

Static Tools

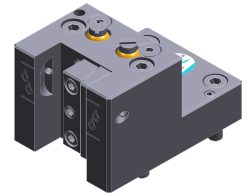
**heimatec**®

# Miyano

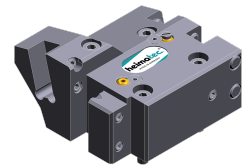
## BNA 42 DHY

Part-#	Tool adaption	Coolant	Pressure max.
<b>Universal turning holder</b>			
8 224 04 071	<b>Sq. 20</b>	IC/Ext	140 bar
<b>Multiple turning holder</b>			
8 251 01 000	<b>Sq. 16</b>	EXT	--
<b>Multiple boring bar holder</b>			
8 253 07 008	<b>Ø 25</b>	IC/Ext	--
8 253 07 048	<b>Ø 25</b>	IC/Ext	--
<b>Cut-off holder, height adjustable</b>			
8 320 03 019	<b>Clampshaft SH 32</b>	IC/Ext	70 bar

*Illustrations similar.*



8 224 04 071



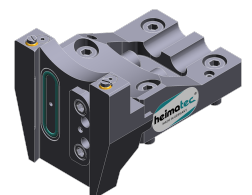
8 251 01 000



8 253 07 008



8 253 07 048



8 320 03 019