

Takamatsu

# Takamaz XYT-51



# High-tech from heimatec - heimatec - Tools and systems for productive turning and milling

heimatec belongs to the international technology and quality leaders for precision tools and specializes in the development and production of high-precision static and live tools for all CNC lathes, CNC turn-/mill machines and CNC machining centers.

The range of products\* spans from static BMT and VDI tool holders, live tools up to highly complex customer-specific individual solutions. heimatec, headquartered in Renchen, has a own subsidiary in Asia and India and numerous representatives as well as trading partners all over the world.

## \*OUR PRODCUTS

Static tool holders

Live tool units

Precision tools

Tools for turning and machining centres

Tools for swiss type lathes

Tool changing and uick-change systems

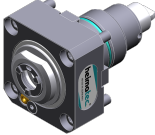
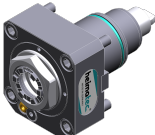

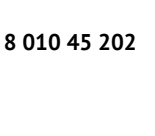

Tool systems for gear production

Digital tool management

This catalogue, including all its parts, is protected by copyright. Any use outside the restricted limitations of the Copyright Act without the consent of heimatec is inadmissible and liable to prosecution. This applies in particular to duplication, translation, microfilming and storage and processing in electronic systems.

**heimatec GmbH** reserves the right to make technical changes at any time without giving prior notice. This applies in particular to adjustments at any time to meet new or changed international standards, or in case of further developments of our products or manufacturing processes.

The current version of our General Terms and Conditions can be found on our website.

Part-#	Name	
<b>8 010 44 040</b>	<b>Axial drilling and milling head ER 20 AX UT</b>	
		<p>Tool drive: Flat (~DIN 1809)            Shank size [mm]: 45.00            Shank type: BMT            Tool adaption: ER 20 A - u-tec            Gear ratio [i]: 1:1            Torque max [Nm]: 32            Rotation max [1/min]: 6000            Rotating direction: same            Coolant: EXT            Please note: Combi bearing</p>
<b>8 010 45 129</b>	<b>Axial drilling and milling head ER 25 AX UT</b>	
		<p>Weight [kg]: 1.830            Tool drive: Flat (~DIN 1809)            Shank size [mm]: 45.00            Shank type: BMT            Tool adaption: ER 25 A - u-tec            Gear ratio [i]: 1:1            Torque max [Nm]: 32            Rotation max [1/min]: 10000            Rotating direction: same            Coolant: EXT</p>
<b>8 010 45 130</b>	<b>Axial drilling and milling head ER 25 AX UT IC</b>	
		<p>Weight [kg]: 2.020            Tool drive: Flat (~DIN 1809)            Shank size [mm]: 45.00            Shank type: BMT            Tool adaption: ER 25 A - u-tec            Gear ratio [i]: 1:1            Torque max [Nm]: 32            Rotation max [1/min]: 6000            Rotating direction: same            Coolant: IC/Ext            Pressure max [bar]: 25            Please note: Combi bearing</p>
<b>8 010 45 202</b>	<b>Axial drilling and milling head ER 25 AX UT</b>	
		<p>Weight [kg]: 1.740            Tool drive: Flat (~DIN 1809)            Shank size [mm]: 45.00            Shank type: BMT            Tool adaption: ER 25 A - u-tec            Gear ratio [i]: 1:1            Torque max [Nm]: 32            Rotation max [1/min]: 10000            Rotating direction: same            Coolant: EXT</p>
<b>8 010 45 220</b>	<b>Axial drilling and milling head ER 25 AX UT IC</b>	
		<p>Tool drive: Flat (~DIN 1809)            Shank size [mm]: 45.00            Shank type: BMT            Tool adaption: ER 25 A - u-tec            Gear ratio [i]: 1:1            Torque max [Nm]: 50</p>

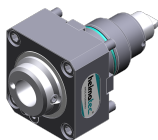
Part-#

Name

Rotation max [1/min]: 15000  
 Rotating direction: same  
 Coolant: IC/Ext  
 Pressure max [bar]: 100  
 Please note: Dryrun possible

8 010 46 258

**Axial drilling and milling head HT 4 IC**



Weight [kg]: 2.090  
 Tool drive: Flat (~DIN 1809)  
 Shank size [mm]: 45.00  
 Shank type: BMT  
 Tool adaption: HT 4  
 Gear ratio [i]: 1:1  
 Torque max [Nm]: 32  
 Rotation max [1/min]: 6000  
 Rotating direction: same  
 Coolant: IC/Ext  
 Pressure max [bar]: 25

8 010 46 272

**Axial drilling and milling head ER 32 AX UT**

Tool drive: Flat (~DIN 1809)  
 Shank size [mm]: 45.00  
 Shank type: BMT  
 Tool adaption: ER 32 A - u-tec  
 Gear ratio [i]: 1:1  
 Torque max [Nm]: 32  
 Rotation max [1/min]: 8000  
 Rotating direction: same  
 Coolant: EXT  
 Please note: stronger bearing

8 010 46 327

**Axial drilling and milling head HT 4 IC**



Weight [kg]: 2.200  
 Tool drive: Flat (~DIN 1809)  
 Shank size [mm]: 45.00  
 Shank type: BMT  
 Tool adaption: HT 4  
 Gear ratio [i]: 1:1  
 Torque max [Nm]: 50  
 Rotation max [1/min]: 15000  
 Rotating direction: same  
 Coolant: IC/Ext  
 Pressure max [bar]: 100  
 Please note: Dryrun possible

8 019 45 162

**Axial drilling and milling head ER 25 AX UT**

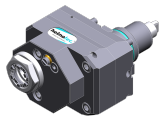


Notation: offset  
 Tool drive: Flat (~DIN 1809)  
 Shank size [mm]: 45.00  
 Shank type: BMT  
 Tool adaption: ER 25 A - u-tec  
 Gear ratio [i]: 1:2  
 Torque max [Nm]: 25  
 Rotation max [1/min]: 12000  
 Rotating direction: opposite  
 Coolant: EXT  
 Please note: stronger bearing

Part-#	Name
--------	------

Offset [mm]: 42

**8 019 45 163**



**Axial drilling and milling head ER 25 AX UT IC**  
 Weight [kg]: 5.940  
 Notation: offset; 180°reversible  
 Tool drive: Flat (~DIN 1809)  
 Shank size [mm]: 45.00  
 Shank type: BMT  
 Tool adaption: ER 25 A - u-tec  
 Gear ratio [i]: 1:2  
 Torque max [Nm]: 25  
 Rotation max [1/min]: 12000  
 Rotating direction: opposite  
 Coolant: IC/Ext  
 Pressure max [bar]: 140  
 Please note: stronger bearing  
 Offset [mm]: 42

**8 019 45 164**



**Axial drilling and milling head ER 25 AX UT**  
 Notation: offset  
 Tool drive: Flat (~DIN 1809)  
 Shank size [mm]: 45.00  
 Shank type: BMT  
 Tool adaption: ER 25 A - u-tec  
 Gear ratio [i]: 1:3  
 Torque max [Nm]: 16  
 Rotation max [1/min]: 18000  
 Rotating direction: opposite  
 Coolant: EXT  
 Please note: stronger bearing  
 Offset [mm]: 42

**8 019 45 165**



**Axial drilling and milling head ER 25 AX UT IC**  
 Notation: offset; 180° reversible  
 Tool drive: Flat (~DIN 1809)  
 Shank size [mm]: 45.00  
 Shank type: BMT  
 Tool adaption: ER 25 A - u-tec  
 Gear ratio [i]: 1:3  
 Torque max [Nm]: 16  
 Rotation max [1/min]: 18000  
 Rotating direction: opposite  
 Coolant: IC/Ext  
 Pressure max [bar]: 140  
 Please note: stronger bearing  
 Offset [mm]: 42

**8 019 45 174**

**Axial drilling and milling head ER 25 AX UT IC**  
 Notation: offset  
 Tool drive: Flat (~DIN 1809)  
 Shank size [mm]: 45.00  
 Shank type: BMT  
 Tool adaption: ER 25 A - u-tec  
 Gear ratio [i]: 2:1  
 Torque max [Nm]: 50  
 Rotation max [1/min]: 3000  
 Rotating direction: opposite

Part-#

Name

Coolant: IC/Ext  
Pressure max [bar]: 140  
Please note: stronger bearing  
Offset [mm]: 42

8 030 45 228

**Radial drilling and milling head ER 25 AX UT IC**



Weight [kg]: 6.590  
Notation: 180° reversible  
Tool drive: Flat (~DIN 1809)  
Shank size [mm]: 45.00  
Shank type: BMT  
Tool adaption: ER 25 A - u-tec  
Gear ratio [i]: 1:3  
Torque max [Nm]: 12  
Rotation max [1/min]: 18000  
Rotating direction: same  
Coolant: IC/Ext  
Pressure max [bar]: 140  
Please note: stronger bearing  
Center distance [mm]: 85

8 030 45 229

**Radial drilling and milling head ER 25 AX UT IC**



Notation: 180° reversible  
Tool drive: Flat (~DIN 1809)  
Shank size [mm]: 45.00  
Shank type: BMT  
Tool adaption: ER 25 A - u-tec  
Gear ratio [i]: 1:2  
Torque max [Nm]: 16  
Rotation max [1/min]: 12000  
Rotating direction: same  
Coolant: IC/Ext  
Pressure max [bar]: 140  
Please note: stronger bearing  
Center distance [mm]: 85

8 030 45 230

**Radial drilling and milling head ER 25 AX UT**

Notation: 180° reversible  
Tool drive: Flat (~DIN 1809)  
Shank size [mm]: 45.00  
Shank type: BMT  
Tool adaption: ER 25 A - u-tec  
Gear ratio [i]: 1:3  
Torque max [Nm]: 12  
Rotation max [1/min]: 18000  
Rotating direction: same  
Coolant: EXT  
Please note: stronger bearing  
Center distance [mm]: 85

8 030 45 231

**Radial drilling and milling head ER 25 AX UT**

Weight [kg]: 6.400  
Notation: 180° reversible  
Tool drive: Flat (~DIN 1809)  
Shank size [mm]: 45.00  
Shank type: BMT  
Tool adaption: ER 25 A - u-tec

Part-#	Name
--------	------

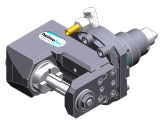
Gear ratio [i]: 1:2  
 Torque max [Nm]: 16  
 Rotation max [1/min]: 12000  
 Rotating direction: same  
 Coolant: EXT  
 Please note: stronger bearing  
 Center distance [mm]: 85

**8 030 45 551 Radial drilling and milling head ER 25 AX UT IC**



Weight [kg]: 6.660  
 Notation: 180° reversible  
 Tool drive: Flat (~DIN 1809)  
 Shank size [mm]: 45.00  
 Shank type: BMT  
 Tool adaption: ER 25 A - u-tec  
 Gear ratio [i]: 1:1  
 Torque max [Nm]: 50  
 Rotation max [1/min]: 6000  
 Rotating direction: opposite  
 Coolant: IC/Ext  
 Pressure max [bar]: 140  
 Please note: Combi bearing  
 Center distance [mm]: 105

**8 037 44 016 Radial disk mill head arbor 16**



Notation: 180° reversible  
 Version: ± 23° turnable  
 Tool drive: Flat (~DIN 1809)  
 Shank size [mm]: 45.00  
 Shank type: BMT  
 Tool adaption: Arbor 16  
 Gear ratio [i]: 2:1  
 Torque max [Nm]: 32  
 Rotation max [1/min]: 4000  
 Rotating direction: opposite  
 Coolant: EXT  
 Center distance [mm]: 78

**8 037 44 038 Radial disk mill head arbor 16**

Weight [kg]: 4.650  
 Notation: 180° reversible  
 Version: ± 45° turnable  
 Tool drive: Flat (~DIN 1809)  
 Shank size [mm]: 45.00  
 Shank type: BMT  
 Tool adaption: Arbor 16  
 Gear ratio [i]: 2:1  
 Torque max [Nm]: 32  
 Rotation max [1/min]: 4000  
 Rotating direction: opposite  
 Coolant: EXT  
 Center distance [mm]: 78

Part-#

Name

8 039 45 087

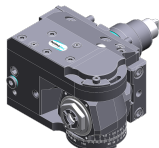
**Radial drilling and milling head ER 25 AX UT**



Weight [kg]: 8.480  
 Notation: offset  
 Version: double spindle  
 Tool drive: Flat (~DIN 1809)  
 Shank size [mm]: 45.00  
 Shank type: BMT  
 Tool adaption: ER 25 A - u-tec  
 Gear ratio [i]: 1:1  
 Torque max [Nm]: 50  
 Rotation max [1/min]: 8000  
 Rotating direction: same/opposite  
 Coolant: EXT  
 Please note: stronger bearing; pendulous drive  
 Center distance [mm]: 80

8 043 44 014

**Universal head +135°/-30° adj. ER16AX UTIK**



Notation: offset  
 Tool drive: Flat (~DIN 1809)  
 Shank size [mm]: 45.00  
 Shank type: BMT  
 Tool adaption: ER 16 A - u-tec  
 Gear ratio [i]: 1:1  
 Torque max [Nm]: 25  
 Rotation max [1/min]: 6000  
 Rotating direction: opposite  
 Coolant: IC/Ext  
 Pressure max [bar]: 140  
 Center distance [mm]: 69  
 Offset [mm]: 60

8 043 44 015

**Universal head +135°/-30° adj. ER16 AX UT**


Weight [kg]: 8.710  
 Notation: offset  
 Tool drive: Flat (~DIN 1809)  
 Shank size [mm]: 45.00  
 Shank type: BMT  
 Tool adaption: ER 16 A - u-tec  
 Gear ratio [i]: 1:1  
 Torque max [Nm]: 25  
 Rotation max [1/min]: 6000  
 Rotating direction: opposite  
 Coolant: EXT  
 Center distance [mm]: 69  
 Offset [mm]: 60


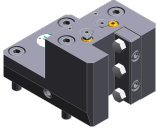
8 043 44 043



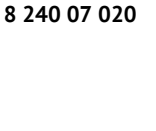
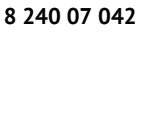
**Universal head +105°/-20° adj. ER16 AX UT**




Weight [kg]: 5.320  
 Notation: offset;180° reversible  
 Tool drive: Flat (~DIN 1809)  
 Shank size [mm]: 45.00  
 Shank type: BMT  
 Tool adaption: ER 16 A - u-tec  
 Gear ratio [i]: 1:1  
 Torque max [Nm]: 25  
 Rotation max [1/min]: 6000  
 Rotating direction: opposite

Part-#	Name	
	Coolant:	EXT
	Center distance [mm]:	50
	Offset [mm]:	35
<b>8 043 45 011</b>	<b>Universal head +135°/-30° adj. ER25AX UT</b>	
	Weight [kg]:	8.950
	Notation:	offset
	Tool drive:	Flat (~DIN 1809)
	Shank size [mm]:	45.00
	Shank type:	BMT
	Tool adaption:	ER 25 A - u-tec
	Gear ratio [i]:	1:1
	Torque max [Nm]:	25
	Rotation max [1/min]:	6000
	Rotating direction:	same
	Coolant:	EXT
	Please note:	Note swivel range! stronger bearing
	Center distance [mm]:	69
	Offset [mm]:	60
<b>8 043 45 016</b>	<b>Universal head +135°/-30° adj. ER25AX UT</b>	
	Weight [kg]:	8.920
	Notation:	offset
	Version:	at 45° position can be pinned
	Tool drive:	Flat (~DIN 1809)
	Shank size [mm]:	45.00
	Shank type:	BMT
	Tool adaption:	ER 25 A - u-tec
	Gear ratio [i]:	1:1
	Torque max [Nm]:	25
	Rotation max [1/min]:	6000
	Rotating direction:	same
	Coolant:	EXT
	Please note:	Note swivel range! stronger bearing
	Center distance [mm]:	69
	Offset [mm]:	60
<b>8 050 44 030</b>	<b>Multispindle drilling head ER 16 AX UT</b>	
	Weight [kg]:	5.000
	Notation:	offset
	Employment for:	Main spindle
	Version:	2-spindles
	Tool drive:	Flat (~DIN 1809)
	Shank size [mm]:	45.00
	Shank type:	BMT
	Tool adaption:	ER 16 A - u-tec
	Gear ratio [i]:	1:1
	Torque max [Nm]:	25
	Rotation max [1/min]:	6000
	Rotating direction:	same
	Coolant:	EXT
	Offset [mm]:	58
<b>8 200 99 000</b>	<b>Cover plate 75,0x 75,0x 5,0</b>	
	Weight [kg]:	0.480
	Shank size [mm]:	45.00
	Shank type:	BMT




Part-#	Name	
<b>8 202 00 011</b>	<b>Basic holder longitudinal seat FN 12</b>	
	Weight [kg]:	0.700
	Notation:	180° reversible
	Shank type:	BMT
	Machine adaption:	Centering key b 15
	Tool adaption:	Interface FN 12
	Coolant:	EXT
	Center distance [mm]:	15
<b>8 224 02 003</b>	<b>Cut-off holder SH 26</b>	
	Weight [kg]:	1.190
	Notation:	180° reversible
	Employment for:	Cut-off tool 26
	Version:	Clampshaft on turret side
	Shank type:	BMT
	Machine adaption:	Centering key b 15
	Tool adaption:	Clampshaft SH 26
	Coolant:	EXT
<b>8 224 03 011</b>	<b>Cut-off holder SH 32</b>	
	Weight [kg]:	1.230
	Notation:	180° reversible
	Employment for:	Cut-off tool 32
	Version:	Clampshaft on turret side
	Shank type:	BMT
	Machine adaption:	Centering key b 15
	Tool adaption:	Clampshaft SH 32
	Coolant:	EXT
<b>8 224 03 014</b>	<b>Universal turning holder sq. 3/4" IC</b>	
	Weight [kg]:	2.540
	Notation:	180° reversible
	Shank type:	BMT
	Machine adaption:	Centering key b 15
	Tool adaption:	Sq. 3/4" (19,05mm)
		Sq. 3/4" (19,05mm)
	Coolant:	IC/Ext
	Pressure max [bar]:	100
	Please note:	Key rail
<b>8 224 03 017</b>	<b>Universal turning holder sq. 3/4"</b>	
	Weight [kg]:	2.550
	Notation:	180° reversible
	Shank type:	BMT
	Machine adaption:	Centering key b 15
	Tool adaption:	Sq. 3/4" (19,05mm)
	Coolant:	EXT
<b>8 224 04 003</b>	<b>Universal turning holder sq. 20</b>	
	Weight [kg]:	2.510
	Notation:	180° reversible
	Shank type:	BMT
	Machine adaption:	Centering key b 15
	Tool adaption:	Sq. 20
	Coolant:	EXT
	Pressure max [bar]:	80

Part-#	Name	
8 224 04 060	<b>Universal turning holder sq. 20 IC</b>	
		<p>Weight [kg]: 2.650            Notation: 180° reversible            Shank type: BMT            Machine adaption: Centering key b 15            Tool adaption: Sq. 20            Sq. 20            Coolant: IC/Ext            Pressure max [bar]: 100            Please note: Key rail</p>
8 224 05 011	<b>Universal turning holder sq. 25</b>	
		<p>Weight [kg]: 3.050            Notation: 180° reversible            Shank type: BMT            Machine adaption: Centering key b 15            Tool adaption: Sq. 25            Coolant: EXT</p>
8 224 05 030	<b>Universal turning holder sq. 25 IC</b>	
		<p>Weight [kg]: 3.030            Notation: 180° reversible            Shank type: BMT            Machine adaption: Centering key b 15            Tool adaption: Sq. 25            Coolant: IC/Ext            Pressure max [bar]: 100            Please note: Key rail</p>
8 240 06 014	<b>Tool holder HT 4 IC</b>	
		<p>Weight [kg]: 3.070            Notation: 180° reversible            Shank type: BMT            Machine adaption: Centering key b 15            Tool adaption: HT 4            Coolant: IC/Ext            Center distance [mm]: 85</p>
8 240 07 020	<b>Boring bar holder Ø 25</b>	
		<p>Weight [kg]: 4.450            Notation: 180° reversible            Shank type: BMT            Machine adaption: Centering key b 15            Tool adaption: Ø 25            Coolant: IC/Ext            Center distance [mm]: 100</p>
8 240 07 042	<b>Tool holder HT 5 IC</b>	
		<p>Weight [kg]: 3.100            Notation: 180° reversible            Shank type: BMT            Machine adaption: Centering key b 15            Tool adaption: HT 5            Coolant: IC/Ext            Center distance [mm]: 85</p>

Part-#	Name	
<b>8 240 08 017</b>	<b>Boring bar holder Ø 32</b>	
	Notation:	180° reversible
	Shank type:	BMT
	Machine adaption:	Centering key b 15
	Tool adaption:	Ø 32
	Coolant:	IC/Ext
	Pressure max [bar]:	80
	Center distance [mm]:	80
<b>8 240 08 018</b>	<b>Boring bar holder Ø 1 1/2"</b>	
	Weight [kg]:	3.700
	Notation:	180° reversible
	Shank type:	BMT
	Machine adaption:	Centering key b 15
	Tool adaption:	Ø 1 1/2" (38,1mm)
	Coolant:	IC/Ext
	Center distance [mm]:	80
<b>8 240 08 023</b>	<b>Boring bar holder Ø 32</b>	
	Weight [kg]:	4.310
	Notation:	180° reversible
	Shank type:	BMT
	Machine adaption:	Centering key b 15
	Tool adaption:	Ø 32
	Coolant:	IC/Ext
	Center distance [mm]:	100
<b>8 240 08 047</b>	<b>Boring bar holder Ø 32</b>	
	Weight [kg]:	4.020
	Notation:	180° reversible
	Version:	offset
	Shank type:	BMT
	Machine adaption:	Centering key b 15
	Tool adaption:	Ø 32
	Coolant:	IC/Ext
	Pressure max [bar]:	80
	Center distance [mm]:	85
<b>8 240 08 057</b>	<b>Boring bar holder Ø 32</b>	
	Weight [kg]:	3.890
	Notation:	180° reversible
	Version:	offset
	Shank type:	BMT
	Machine adaption:	Centering key b 15
	Tool adaption:	Ø 32
	Coolant:	IC/Ext
	Pressure max [bar]:	80
	Center distance [mm]:	85
<b>8 240 09 015</b>	<b>Boring bar holder Ø 40</b>	
	Notation:	180° reversible
	Shank type:	BMT
	Machine adaption:	Centering key b 15
	Tool adaption:	Ø 40
	Coolant:	IC/Ext
	Pressure max [bar]:	80
	Center distance [mm]:	80

Part-#	Name	
<b>8 240 09 018</b>	<b>Boring bar holder Ø 40</b>	
	Weight [kg]:	4.000
	Notation:	180° reversible
	Shank type:	BMT
	Machine adaption:	Centering key b 15
	Tool adaption:	Ø 40
	Coolant:	IC/Ext
	Center distance [mm]:	100
<b>8 244 04 000</b>	<b>Combi facing holder sq. 20</b>	
	Weight [kg]:	3.930
	Employment for:	Main- and sub spindle
	Shank type:	BMT
	Machine adaption:	Centering key b 15
	Tool adaption:	Sq. 20
	Coolant:	EXT
	Pressure max [bar]:	80
<b>8 244 04 007</b>	<b>Combi facing holder sq. 3/4"</b>	
	Employment for:	Main- and sub spindle
	Shank type:	BMT
	Machine adaption:	Centering key b 15
	Tool adaption:	Sq. 3/4" (19,05mm)
	Coolant:	EXT
<b>8 244 04 022</b>	<b>Combi facing holder sq. 20 IC</b>	
	Weight [kg]:	2.200
	Employment for:	Main- and sub spindle
	Shank type:	BMT
	Machine adaption:	Centering key b 15
	Tool adaption:	Sq. 20
	Coolant:	IC/Ext
	Pressure max [bar]:	100
	Please note:	Key rail
<b>8 244 04 029</b>	<b>Combi facing holder sq. 20 IC</b>	
	Employment for:	Main- and sub spindle
	Shank type:	BMT
	Machine adaption:	Centering key b 15
	Tool adaption:	Sq. 20
	Coolant:	IC/Ext
	Pressure max [bar]:	100
<b>8 244 05 009</b>	<b>Combi facing holder sq. 25</b>	
	Weight [kg]:	4.320
	Employment for:	Main- and sub spindle
	Version:	Special
	Shank type:	BMT
	Machine adaption:	Centering key b 15
	Tool adaption:	Sq. 25
	Coolant:	EXT

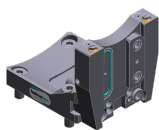
Part-#	Name	
<b>8 249 07 008</b>	<b>Double boring bar holder Ø 25</b>	
	Notation:	180° reversible
	Employment for:	Main- and sub spindle
	Shank type:	BMT
	Machine adaption:	Centering key b 15
	Tool adaption:	Ø 25
	Coolant:	IC/Ext
	Pressure max [bar]:	100
	Center distance [mm]:	100
<b>8 249 08 005</b>	<b>Double boring bar holder Ø 32</b>	
	Notation:	180° reversible
	Employment for:	Main- and sub spindle
	Shank type:	BMT
	Machine adaption:	Centering key b 15
	Tool adaption:	Ø 32
	Coolant:	IC/Ext
	Pressure max [bar]:	100
	Center distance [mm]:	100
<b>8 250 05 004</b>	<b>Multiple tool holder C 3 IC</b>	
	Weight [kg]:	2.100
	Employment for:	Main- and sub spindle
	Version:	right
	Shank type:	BMT
	Machine adaption:	Centering key b 15
	Tool adaption:	heimatec Capto(TM) C 3 heimatec Capto(TM) C 3
	Coolant:	IC
	Please note:	Check applicability; note tool length!
	Offset [mm]:	27 27
<b>8 251 04 008</b>	<b>Combi double turning holder sq. 20</b>	
	Employment for:	Main- and sub spindle
	Shank type:	BMT
	Machine adaption:	Centering key b 15
	Tool adaption:	Sq. 20 Sq. 20 Sq. 20 Sq. 20
	Coolant:	EXT
	Pressure max [bar]:	80
<b>8 251 04 009</b>	<b>Combi double turning holder sq. 3/4"</b>	
	Weight [kg]:	4.610
	Employment for:	Main- and sub spindle
	Shank type:	BMT
	Machine adaption:	Centering key b 15
	Tool adaption:	Sq. 3/4" (19,05mm) Sq. 3/4" (19,05mm) Sq. 3/4" (19,05mm) Sq. 3/4" (19,05mm)
	Coolant:	EXT

Part-#	Name	
<b>8 251 04 044</b>	<b>Combi double turning holder sq. 20</b>	
	Weight [kg]:	4.280
	Employment for:	Main- and sub spindle
	Shank type:	BMT
	Machine adaption:	Centering key b 15
	Tool adaption:	Sq. 20
		Sq. 20
		Sq. 20
		Sq. 20
	Coolant:	EXT
<b>8 251 04 047</b>	<b>Combi double turning holder sq. 3/4"</b>	
	Employment for:	Main- and sub spindle
	Shank type:	BMT
	Machine adaption:	Centering key b 15
	Tool adaption:	Sq. 3/4" (19,05mm)
		Sq. 3/4" (19,05mm)
		Sq. 3/4" (19,05mm)
		Sq. 3/4" (19,05mm)
	Coolant:	EXT
<b>8 259 01 015</b>	<b>Multiple turning holder 4x sq. 20</b>	
	Weight [kg]:	5.320
	Employment for:	Main- and sub spindle
	Version:	Y-axes offset
	Shank type:	BMT
	Machine adaption:	Centering key b 15
	Tool adaption:	Sq. 20
		Sq. 20
		Sq. 20
		Sq. 20
	Coolant:	EXT
<b>8 259 01 016</b>	<b>Multiple turning holder 4x sq. 20 IC</b>	
	Weight [kg]:	5.300
	Employment for:	Main- and sub spindle
	Version:	Y-axes offset
	Shank type:	BMT
	Machine adaption:	Centering key b 15
	Tool adaption:	Sq. 20
		Sq. 20
		Sq. 20
		Sq. 20
	Coolant:	IC/Ext
	Pressure max [bar]:	100
<b>8 320 02 012</b>	<b>Cut-off holder, height adjustable SH 26 IC</b>	
	Weight [kg]:	1.270
	Notation:	180° reversible
	Shank type:	BMT
	Machine adaption:	Centering key b 15
	Tool adaption:	Clampshaft SH 26
	Coolant:	IC/Ext
	Pressure max [bar]:	70

Part-#	Name
--------	------

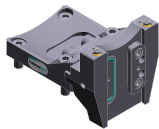
<b>8 320 02 013</b>	<b>Cut-off holder, height adjustable SH 26 IC</b>
Weight [kg]:	1.360
Notation:	180° reversible
Shank type:	BMT
Machine adaption:	Centering key b 15
Tool adaption:	Clampshaft SH 26
Coolant:	IC/Ext
Pressure max [bar]:	70
Please note:	Clampshaft internal

<b>8 320 03 011</b>	<b>Cut-off holder, height adjustable SH 32 IC</b>
Weight [kg]:	1.330
Notation:	180° reversible
Shank type:	BMT
Machine adaption:	Centering key b 15
Tool adaption:	Clampshaft SH 32
Coolant:	IC/Ext
Pressure max [bar]:	70



<b>8 320 03 018</b>	<b>Cut-off holder, height adjustable SH 32 IC</b>
Weight [kg]:	1.480
Notation:	180° reversible
Shank type:	BMT
Machine adaption:	Centering key b 15
Tool adaption:	Clampshaft SH 32
Coolant:	IC/Ext
Pressure max [bar]:	70
Please note:	Clampshaft internal

<b>8 320 03 023</b>	<b>Cut-off holder, height adjustable SH 32 IC</b>
Weight [kg]:	1.590
Shank type:	BMT
Machine adaption:	Centering key b 15
Tool adaption:	Clampshaft SH 32
Coolant:	IC/Ext
Pressure max [bar]:	70
Please note:	with offset cut-off tool holder; use



<b>8 320 03 051</b>	<b>Cut-off holder, height adjustable SH 32 IC</b>
Weight [kg]:	1.230
Notation:	180° reversible
Version:	Clampshaft on turret center
Shank type:	BMT
Machine adaption:	Centering key b 15
Tool adaption:	Clampshaft SH 32
Coolant:	IC/Ext
Pressure max [bar]:	70





## heimatec.u-tec®

heimatec.com

Products / Tool change systems /  
u-tec® Tool-changing system



versions see catalog



## heimatec.easy-quick

heimatec.com

Products / Tool change systems /  
easy-quick HT quick-changing system



versions see catalog



## heimatec.Capto™

heimatec.com

Products / Tool change systems /  
heimatec.Capto™ quick-changing system



versions see catalog



## heimatec.accessories

heimatec.com

Products / Accessories



versions see catalog





● heimatec overseas branches

○ global representations of heimatec

**heimatec**<sup>®</sup>

**heimatec GmbH**  
Präzisionswerkzeuge  
Carl-Benz-Str. 4  
77871 Renchen  
Germany

T +49 7843 9466 0  
[www.heimatec.com](http://www.heimatec.com)  
[info@heimatec.com](mailto:info@heimatec.com)

Please find the contact details of our worldwide trading partners on our website:  
<https://heimatec.com/business-partners>