

TOPSELLER -
many more available!

Live Tools

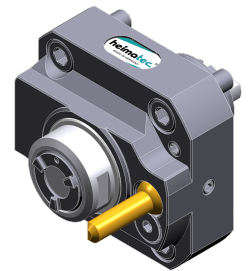
heimatec®

Miyano

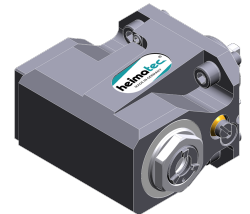
BNA 42 MSY/2

Part-#	Tool adaption	Rotation max [1/min]	Gear ratio	Coolant	Pressure max.	Center distance
Axial drilling and milling head						
8 010 34 017	ER 16 A - u-tec	6.000	1:1	EXT	--	--
8 010 34 018	ER 16 A - u-tec	6.000	1:1	IC/Ext	25 bar	--
8 010 34 023	ER 16 A - u-tec	12.000	1:1	IC/Ext	100 bar	--
8 010 34 022	ER 20 A - u-tec	6.000	1:1	EXT	--	--
8 010 34 025	ER 20 A - u-tec	12.000	1:1	IC/Ext	100 bar	--
8 010 34 026	ER 20 A - u-tec	6.000	1:1	IC/Ext	25 bar	--
Radial drilling and milling head						
8 030 34 048	ER 16 A - u-tec	12.000	1:1	IC/Ext	140 bar	59 mm
8 030 34 049	ER 16 A - u-tec	12.000	1:1	EXT	--	59 mm
8 030 34 045	ER 20 A - u-tec	12.000	1:1	IC/Ext	140 bar	59 mm
8 030 34 046	ER 20 A - u-tec	12.000	1:1	EXT	--	59 mm
Radial drilling and milling head, double spindle						
8 039 34 006	ER 16 u-tec	12.000	1:1	EXT	--	59 mm
Universal head, offset						
8 043 34 002	ER 16 A - u-tec	6.000	1:1	EXT	140 bar	50 mm
8 043 34 003	ER 16 A - u-tec	6.000	1:1	IC/Ext	25 bar	50 mm
8 043 34 004	ER 16 A - u-tec	12.000	1:2	EXT	--	50 mm
8 043 34 012	ER 16 A - u-tec	12.000	1:2	EXT	140 bar	66 mm
8 043 34 013	ER 16 A - u-tec	6.000	1:1	EXT	--	66 mm
8 043 34 014	ER 16 A - u-tec	6.000	1:1	IC/Ext	25 bar	66 mm
Multispindle drilling head						
8 050 34 000	ER 16 A - u-tec	6.000	1:1	EXT	--	--
8 050 34 003	ER 16 A - u-tec	6.000	1:1	IC/Ext	140 bar	--

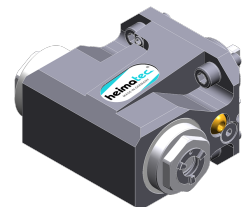
Illustrations similar.



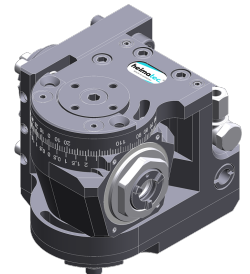
8 010 34 017



8 030 34 048



8 039 34 006



8 043 34 002

TOPSELLER -
many more available!

Static Tools

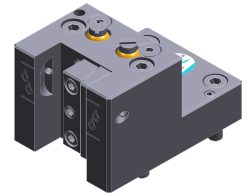
heimatec®

Miyano

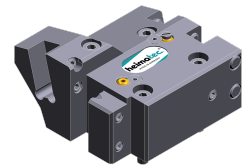
BNA 42 MSY/2

Part-#	Tool adaption	Coolant	Pressure max.
Universal turning holder			
8 224 04 071	Sq. 20	IC/Ext	140 bar
Multiple turning holder			
8 251 01 000	Sq. 16	EXT	--
Multiple boring bar holder			
8 253 07 008	Ø 25	IC/Ext	--
8 253 07 048	Ø 25	IC/Ext	--
Cut-off holder, height adjustable			
8 320 03 019	Clampshaft SH 32	IC/Ext	70 bar

Illustrations similar.



8 224 04 071



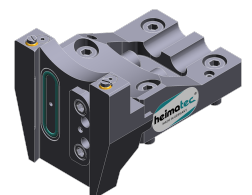
8 251 01 000



8 253 07 008



8 253 07 048



8 320 03 019