

SMEC

SL 2500

SY/AY/ASY/BY/BS



# High-tech from heimatec - heimatec - Tools and systems for productive turning and milling

heimatec belongs to the international technology and quality leaders for precision tools and specializes in the development and production of high-precision static and live tools for all CNC lathes, CNC turn-/mill machines and CNC machining centers.

The range of products\* spans from static BMT and VDI tool holders, live tools up to highly complex customer-specific individual solutions. heimatec, headquartered in Renchen, has a own subsidiary in Asia and India and numerous representatives as well as trading partners all over the world.

## \*OUR PRODCUTS

Static tool holders

Live tool units

Precision tools

Tools for turning and machining centres

Tools for swiss type lathes

Tool changing and uick-change systems

Tool systems for gear production

Digital tool management

This catalogue, including all its parts, is protected by copyright. Any use outside the restricted limitations of the Copyright Act without the consent of heimatec is inadmissible and liable to prosecution. This applies in particular to duplication, translation, microfilming and storage and processing in electronic systems.

**heimatec GmbH** reserves the right to make technical changes at any time without giving prior notice. This applies in particular to adjustments at any time to meet new or changed international standards, or in case of further developments of our products or manufacturing processes.

The current version of our General Terms and Conditions can be found on our website.

Part-#

Name

**8 010 66 132****Axial drilling and milling head ER 32 AS UT**

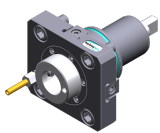
Weight [kg]: 3.340  
 Tool drive: Flat (~DIN 1809)  
 Shank size [mm]: 65.00  
 Shank type: BMT  
 Tool adaption: ER 32 A - u-tec  
 Gear ratio [i]: 1:1  
 Torque max [Nm]: 50  
 Rotation max [1/min]: 6000  
 Rotating direction: same  
 Coolant: EXT  
 Please note: short version

**8 010 66 143****Axial drilling and milling head ER 32 AX UT IC**

Notation: 180° reversible  
 Tool drive: Flat (~DIN 1809)  
 Shank size [mm]: 65.00  
 Shank type: BMT  
 Tool adaption: ER 32 A - u-tec  
 Gear ratio [i]: 1:1  
 Torque max [Nm]: 70  
 Rotation max [1/min]: 12000  
 Rotating direction: same  
 Coolant: IC/Ext  
 Pressure max [bar]: 100  
 Please note: Dryrun possible

**8 010 66 145****Axial drilling and milling head ER 32 AX UT**

Notation: 180° reversible  
 Tool drive: Flat (~DIN 1809)  
 Shank size [mm]: 65.00  
 Shank type: BMT  
 Tool adaption: ER 32 A - u-tec  
 Gear ratio [i]: 1:1  
 Torque max [Nm]: 70  
 Rotation max [1/min]: 12000  
 Rotating direction: same  
 Coolant: EXT  
 Pressure max [bar]: 140

**8 010 67 025****Axial drilling and milling head HT 5**

Weight [kg]: 3.065  
 Tool drive: Flat (~DIN 1809)  
 Shank size [mm]: 65.00  
 Shank type: BMT  
 Tool adaption: HT 5  
 Gear ratio [i]: 1:1  
 Torque max [Nm]: 50  
 Rotation max [1/min]: 6000  
 Rotating direction: same  
 Coolant: EXT

Part-#

Name

**8 010 67 026****Axial drilling and milling head HT 5 IC**

Weight [kg]:	3.210
Tool drive:	Flat (~DIN 1809)
Shank size [mm]:	65.00
Shank type:	BMT
Tool adaption:	HT 5
Gear ratio [i]:	1:1
Torque max [Nm]:	50
Rotation max [1/min]:	6000
Rotating direction:	same
Coolant:	IC/Ext
Pressure max [bar]:	25

**8 010 67 132****Axial drilling and milling head ER 40 AX UT**

Weight [kg]:	4.870
Tool drive:	Flat (~DIN 1809)
Shank size [mm]:	65.00
Shank type:	BMT
Tool adaption:	ER 40 A - u-tec
Gear ratio [i]:	1:1
Torque max [Nm]:	50
Rotation max [1/min]:	5000
Rotating direction:	same
Coolant:	EXT
Please note:	Combi bearing

**8 013 64 008****Axial drilling and milling head ER 16 AX UT**

Weight [kg]:	4.050
Tool drive:	Flat (~DIN 1809)
Shank size [mm]:	65.00
Shank type:	BMT
Tool adaption:	ER 16 A - u-tec
Gear ratio [i]:	1:4
Torque max [Nm]:	5
Rotation max [1/min]:	24000
Rotating direction:	same
Coolant:	EXT

**8 013 64 009****Axial drilling and milling head ER 16 AX UT IC**

Tool drive:	Flat (~DIN 1809)
Shank size [mm]:	65.00
Shank type:	BMT
Tool adaption:	ER 16 A - u-tec
Gear ratio [i]:	1:4
Torque max [Nm]:	5
Rotation max [1/min]:	24000
Rotating direction:	same
Coolant:	IC/Ext
Pressure max [bar]:	100

Part-#

Name

**8 019 65 019****Axial drilling and milling head ER 25 AX UT IC**

Weight [kg]: 7.790  
 Notation: offset; 180° reversible  
 Tool drive: Flat (~DIN 1809)  
 Shank size [mm]: 65.00  
 Shank type: BMT  
 Tool adaption: ER 25 A - u-tec  
 Gear ratio [i]: 1:1  
 Torque max [Nm]: 50  
 Rotation max [1/min]: 6000  
 Rotating direction: opposite  
 Coolant: IC/Ext  
 Pressure max [bar]: 140  
 Please note: stronger bearing  
 Offset [mm]: 50

**8 019 65 025****Axial drilling and milling head ER 25 AX UT**


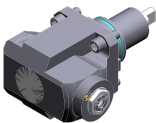
Weight [kg]: 6.500  
 Notation: offset; 180° reversible  
 Tool drive: Flat (~DIN 1809)  
 Shank size [mm]: 65.00  
 Shank type: BMT  
 Tool adaption: ER 25 A - u-tec  
 Gear ratio [i]: 1:3  
 Torque max [Nm]: 12  
 Rotation max [1/min]: 15000  
 Rotating direction: opposite  
 Coolant: EXT  
 Please note: stronger bearing  
 Offset [mm]: 50

**8 019 65 027****Axial drilling and milling head ER 25 AX UT IC**

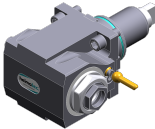
Weight [kg]: 7.850  
 Notation: offset; 180° reversible  
 Tool drive: Flat (~DIN 1809)  
 Shank size [mm]: 65.00  
 Shank type: BMT  
 Tool adaption: ER 25 A - u-tec  
 Gear ratio [i]: 1:2  
 Torque max [Nm]: 40  
 Rotation max [1/min]: 12000  
 Rotating direction: opposite  
 Coolant: IC/Ext  
 Pressure max [bar]: 140  
 Please note: stronger bearing  
 Offset [mm]: 50

**8 019 65 067****Axial drilling and milling head ER 25 AX UT**

Weight [kg]: 6.030  
 Notation: offset; 180° reversible  
 Tool drive: Flat (~DIN 1809)  
 Shank size [mm]: 65.00  
 Shank type: BMT  
 Tool adaption: ER 25 A - u-tec  
 Gear ratio [i]: 1:1  
 Torque max [Nm]: 50

Part-#	Name	
		Rotation max [1/min]: 6000 Rotating direction: opposite Coolant: EXT Please note: stronger bearing Offset [mm]: 50
<b>8 019 66 014</b>	<b>Axial drilling and milling head ER 32 AX UT IC</b>	
		Weight [kg]: 10.740 Notation: offset; Tool drive: Flat (~DIN 1809) Shank size [mm]: 65.00 Shank type: BMT Tool adaption: ER 32 A - u-tec Gear ratio [i]: 1:1 Torque max [Nm]: 100 Rotation max [1/min]: 6000 Rotating direction: opposite Coolant: IC/Ext Pressure max [bar]: 140 Please note: stronger bearing Offset [mm]: 75
<b>8 019 66 017</b>	<b>Axial drilling and milling head ER 32 AX UT</b>	
		Weight [kg]: 7.590 Notation: offset; 180° reversible Tool drive: Flat (~DIN 1809) Shank size [mm]: 65.00 Shank type: BMT Tool adaption: ER 32 A - u-tec Gear ratio [i]: 2:1 Torque max [Nm]: 80 Rotation max [1/min]: 3000 Rotating direction: opposite Coolant: EXT Please note: stronger bearing Offset [mm]: 50
<b>8 030 64 021</b>	<b>Radial drilling and milling head ER 16 AX UT</b>	
		Weight [kg]: 8.030 Notation: 180° reversible Tool drive: Flat (~DIN 1809) Shank size [mm]: 65.00 Shank type: BMT Tool adaption: ER 16 A - u-tec Gear ratio [i]: 1:4 Torque max [Nm]: 5 Rotation max [1/min]: 24000 Rotating direction: opposite Coolant: EXT Center distance [mm]: 72

Part-#	Name
<b>8 030 64 023</b>	<b>Radial drilling and milling head ER 16 AX UT IC</b>
	Weight [kg]: 8.540
	Notation: 180° reversible
	Tool drive: Flat (~DIN 1809)
	Shank size [mm]: 65.00
	Shank type: BMT
	Tool adaption: ER 16 A - u-tec
	Gear ratio [i]: 1:4
	Torque max [Nm]: 5
	Rotation max [1/min]: 24000
	Rotating direction: opposite
	Coolant: IC/Ext
	Pressure max [bar]: 140
	Center distance [mm]: 72
<b>8 030 65 095</b>	<b>Radial drilling and milling head ER 25 AS UT</b>
	Weight [kg]: 7.730
	Notation: 180° reversible
	Tool drive: Flat (~DIN 1809)
	Shank size [mm]: 65.00
	Shank type: BMT
	Tool adaption: ER 25 A - u-tec
	Gear ratio [i]: 1:1
	Torque max [Nm]: 70
	Rotation max [1/min]: 10000
	Rotating direction: same
	Coolant: EXT
	Center distance [mm]: 72
<b>8 030 65 097</b>	<b>Radial drilling and milling head ER 25 AS UT IC</b>
	Weight [kg]: 8.550
	Notation: 180° reversible
	Tool drive: Flat (~DIN 1809)
	Shank size [mm]: 65.00
	Shank type: BMT
	Tool adaption: ER 25 A - u-tec
	Gear ratio [i]: 1:1
	Torque max [Nm]: 70
	Rotation max [1/min]: 10000
	Rotating direction: same
	Coolant: IC/Ext
	Pressure max [bar]: 140
	Center distance [mm]: 72
<b>8 030 66 123</b>	<b>Radial drilling and milling head ER 32 AS UT IC</b>
	Weight [kg]: 8.450
	Notation: 180° reversible
	Tool drive: Flat (~DIN 1809)
	Shank size [mm]: 65.00
	Shank type: BMT
	Tool adaption: ER 32 A - u-tec
	Gear ratio [i]: 1:1
	Torque max [Nm]: 70
	Rotation max [1/min]: 6000
	Rotating direction: same
	Coolant: IC/Ext
	Pressure max [bar]: 140
	Please note: stronger bearing

Part-#	Name	
	Center distance [mm]:	72
<b>8 030 66 155</b>	<b>Radial drilling and milling head ER 32 AS UT</b>	
	Notation:	180° reversible
	Tool drive:	Flat (~DIN 1809)
	Shank size [mm]:	65.00
	Shank type:	BMT
	Tool adaption:	ER 32 A - u-tec
	Gear ratio [i]:	2:1
	Torque max [Nm]:	80
	Rotation max [1/min]:	3000
	Rotating direction:	opposite
	Coolant:	EXT
	Center distance [mm]:	72
<b>8 030 66 158</b>	<b>Radial drilling and milling head ER 32 AS UT IC</b>	
	Weight [kg]:	9.150
	Notation:	180° reversible
	Tool drive:	Flat (~DIN 1809)
	Shank size [mm]:	65.00
	Shank type:	BMT
	Tool adaption:	ER 32 A - u-tec
	Gear ratio [i]:	2:1
	Torque max [Nm]:	63
	Rotation max [1/min]:	3000
	Rotating direction:	opposite
	Coolant:	IC/Ext
	Pressure max [bar]:	140
	Please note:	Rotating direction note; combi bearing
	Center distance [mm]:	72
<b>8 030 66 224</b>	<b>Radial drilling and milling head C 4 IC</b>	
	Weight [kg]:	10.070
	Notation:	180° reversible
	Tool drive:	Flat (~DIN 1809)
	Shank size [mm]:	65.00
	Shank type:	BMT
	Tool adaption:	heimatec Capto(TM) C 4
	Gear ratio [i]:	1:1
	Torque max [Nm]:	50
	Rotation max [1/min]:	6000
	Rotating direction:	opposite
	Coolant:	IC/Ext
	Pressure max [bar]:	140
	Please note:	Check applicability; note tool length!
	Center distance [mm]:	72
<b>8 030 66 229</b>	<b>Radial drilling and milling head ER 32 IC</b>	
	Weight [kg]:	8.630
	Notation:	180° reversible
	Tool drive:	Flat (~DIN 1809)
	Shank size [mm]:	65.00
	Shank type:	BMT
	Tool adaption:	ER 32
	Gear ratio [i]:	1:1
	Torque max [Nm]:	70
	Rotation max [1/min]:	6000

Part-#

Name

Rotating direction: same  
 Coolant: IC/Ext  
 Pressure max [bar]: 140  
 Center distance [mm]: 72

**8 030 66 239****Radial drilling and milling head ER 32 AS UT**

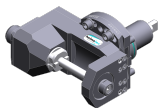
Weight [kg]: 8.200  
 Notation: 180° reversible  
 Tool drive: Flat (~DIN 1809)  
 Shank size [mm]: 65.00  
 Shank type: BMT  
 Tool adaption: ER 32 A - u-tec  
 Gear ratio [i]: 1:1  
 Torque max [Nm]: 70  
 Rotation max [1/min]: 10000  
 Rotating direction: same  
 Coolant: EXT  
 Pressure max [bar]: 140  
 Center distance [mm]: 72

**8 030 66 243****Radial drilling and milling head ER 32 AS UT IC**

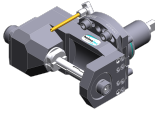
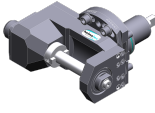
Weight [kg]: 8.500  
 Notation: 180° reversible  
 Tool drive: Flat (~DIN 1809)  
 Shank size [mm]: 65.00  
 Shank type: BMT  
 Tool adaption: ER 32 A - u-tec  
 Gear ratio [i]: 1:1  
 Torque max [Nm]: 70  
 Rotation max [1/min]: 10000  
 Rotating direction: same  
 Coolant: IC/Ext  
 Pressure max [bar]: 140  
 Center distance [mm]: 72

**8 030 67 153****Radial drilling and milling head ER 40 AX UT**

Weight [kg]: 8.260  
 Notation: 180° reversible  
 Tool drive: Flat (~DIN 1809)  
 Shank size [mm]: 65.00  
 Shank type: BMT  
 Tool adaption: ER 40 A - u-tec  
 Gear ratio [i]: 1:1  
 Torque max [Nm]: 70  
 Rotation max [1/min]: 6000  
 Rotating direction: same  
 Coolant: EXT  
 Please note: stronger bearing  
 Center distance [mm]: 72

**8 037 64 039****Radial disk mill head arbor 16**

Weight [kg]: 11.860  
 Tool drive: Flat (~DIN 1809)  
 Shank size [mm]: 65.00  
 Shank type: BMT  
 Tool adaption: Arbor 16  
 Gear ratio [i]: 2:1

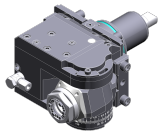
Part-#	Name	
		Torque max [Nm]: 63
		Rotation max [1/min]: 3000
		Rotating direction: same
		Coolant: no
		Please note: strong version; stronger bearing; use
		Center distance [mm]: 87,5
<b>8 037 64 040</b>	<b>Radial disk mill head arbor 16</b>	
		Weight [kg]: 11.610
		Tool drive: Flat (~DIN 1809)
		Shank size [mm]: 65.00
		Shank type: BMT
		Tool adaption: Arbor 16
		Gear ratio [i]: 2:1
		Torque max [Nm]: 63
		Rotation max [1/min]: 3000
		Rotating direction: same
		Coolant: EXT
		Please note: strong version; stronger bearing; use
		Center distance [mm]: 87,5
<b>8 037 65 008</b>	<b>Radial disk mill head arbor 22</b>	
		Weight [kg]: 12.060
		Tool drive: Flat (~DIN 1809)
		Shank size [mm]: 65.00
		Shank type: BMT
		Tool adaption: Arbor 22
		Gear ratio [i]: 2:1
		Torque max [Nm]: 63
		Rotation max [1/min]: 3000
		Rotating direction: same
		Coolant: no
		Please note: strong version; stronger bearing; use
		Center distance [mm]: 87,5
<b>8 039 65 033</b>	<b>Radial drilling and milling head ER 25 AX UT</b>	
		Weight [kg]: 7.930
		Notation: 180° reversible
		Employment for: Main- and sub spindle
		Version: double spindle
		Tool drive: Flat (~DIN 1809)
		Shank size [mm]: 65.00
		Shank type: BMT
		Tool adaption: ER 25 A - u-tec
		Gear ratio [i]: 1:2
		Torque max [Nm]: 16
		Rotation max [1/min]: 12000
		Rotating direction: same/opposite
		Coolant: EXT
		Please note: stronger bearing
		Center distance [mm]: 80

## Part-#

## Name

**8 039 66 025****Radial drilling and milling head ER 32 AS UT**

Weight [kg]:	8.700
Notation:	180° reversible
Employment for:	Main- and sub spindle
Version:	double spindle
Tool drive:	Flat (~DIN 1809)
Shank size [mm]:	65.00
Shank type:	BMT
Tool adaption:	ER 32 A - u-tec
Gear ratio [i]:	1:1
Torque max [Nm]:	70
Rotation max [1/min]:	10000
Rotating direction:	same/opposite
Coolant:	EXT
Please note:	stronger bearing
Center distance [mm]:	72

**8 043 65 000****Universal head +135°/-30° adj. ER25 AX UT**


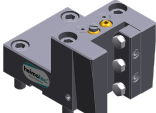
Weight [kg]:	10.800
Notation:	offset; 180° reversible
Tool drive:	Flat (~DIN 1809)
Shank size [mm]:	65.00
Shank type:	BMT
Tool adaption:	ER 25 A - u-tec
Gear ratio [i]:	1:1
Torque max [Nm]:	25
Rotation max [1/min]:	6000
Rotating direction:	same
Coolant:	EXT
Please note:	stronger bearing; note tool length!
Center distance [mm]:	69
Offset [mm]:	60

**8 043 65 004****Universal head +135°/-30° adj. ER25AX UTIK**


Weight [kg]:	10.080
Notation:	offset; 180° reversible
Tool drive:	Flat (~DIN 1809)
Shank size [mm]:	65.00
Shank type:	BMT
Tool adaption:	ER 25 A - u-tec
Gear ratio [i]:	1:1
Torque max [Nm]:	25
Rotation max [1/min]:	6000
Rotating direction:	same
Coolant:	IC/Ext
Pressure max [bar]:	140
Please note:	stronger bearing
Center distance [mm]:	69
Offset [mm]:	60

**8 050 66 005****Multispindle drilling head C 4**





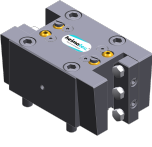
Weight [kg]:	12.500
Notation:	180° reversible
Employment for:	Main- and sub spindle
Version:	2-spindles
Tool drive:	Flat (~DIN 1809)
Shank size [mm]:	65.00

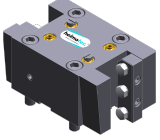
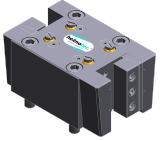

Part-#	Name	
	Shank type:	BMT
	Tool adaption:	heimatec Capto(TM) C 4
	Gear ratio [i]:	1:1
	Torque max [Nm]:	50
	Rotation max [1/min]:	6000
	Rotating direction:	opposite
	Coolant:	EXT
	Please note:	Check applicability; tool length check !
	Offset [mm]:	62 62
<b>8 053 65 019</b>	<b>Multispindle radial head ER 25 AX UT</b>	
	Weight [kg]:	11.230
	Notation:	180° reversible
	Version:	2-spindles
	Tool drive:	Flat (~DIN 1809)
	Shank size [mm]:	65.00
	Shank type:	BMT
	Tool adaption:	ER 25 A - u-tec
	Gear ratio [i]:	1:1
	Torque max [Nm]:	32/Sp
	Rotation max [1/min]:	6000
	Rotating direction:	same
	Coolant:	EXT
	Center distance [mm]:	72
<b>8 053 65 022</b>	<b>Multispindle radial head ER 25 AXUT IC</b>	
	Weight [kg]:	12.050
	Notation:	180° reversible
	Version:	2-spindles
	Tool drive:	Flat (~DIN 1809)
	Shank size [mm]:	65.00
	Shank type:	BMT
	Tool adaption:	ER 25 A - u-tec
	Gear ratio [i]:	1:1
	Torque max [Nm]:	32/Sp
	Rotation max [1/min]:	6000
	Rotating direction:	same
	Coolant:	IC/Ext
	Pressure max [bar]:	140
	Center distance [mm]:	72
<b>8 202 10 009</b>	<b>Basic holder longitudinal seat FN 12</b>	
	Weight [kg]:	1.490
	Notation:	180° reversible
	Shank type:	BMT
	Machine adaption:	Centering key b 18
	Tool adaption:	Interface FN 12
	Coolant:	EXT
<b>8 224 15 006</b>	<b>Universal turning holder sq. 25</b>	
	Weight [kg]:	4.590
	Notation:	180° reversible
	Machine adaption:	Centering key b 18
	Tool adaption:	Sq. 25 Sq. 25
	Coolant:	EXT

Part-#	Name	
	Pressure max [bar]:	80
<b>8 224 15 016</b>	<b>Universal turning holder sq. 1"</b>	
	Weight [kg]:	4.580
	Shank type:	BMT
	Machine adaption:	Centering key b 18
	Tool adaption:	Sq. 1" (25,4mm) Sq. 1" (25,4mm)
	Coolant:	EXT
<b>8 224 15 053</b>	<b>Universal turning holder sq. 25 IC</b>	
	Weight [kg]:	4.690
	Notation:	180° reversible
	Shank type:	BMT
	Machine adaption:	Centering key b 18
	Tool adaption:	Sq. 25 Sq. 25
	Coolant:	IC/Ext
	Pressure max [bar]:	100
	Please note:	Key rail
<b>8 224 15 056</b>	<b>Universal turning holder sq. 1" IC</b>	
	Notation:	180° reversible
	Shank type:	BMT
	Machine adaption:	Centering key b 18
	Tool adaption:	Sq. 1" (25,4mm) Sq. 1" (25,4mm)
	Coolant:	IC/Ext
	Pressure max [bar]:	100
	Please note:	Key rail
<b>8 229 16 012</b>	<b>Tool holder C 4 IC</b>	
	Weight [kg]:	3.300
	Notation:	180° reversible
	Version:	right
	Shank type:	BMT
	Machine adaption:	Centering key b 18
	Tool adaption:	heimatec Capto(TM) C 4
	Coolant:	IC
	Please note:	Check applicability; note tool length!
	Offset [mm]:	31
<b>8 240 16 036</b>	<b>Collet chuck holder ER 32</b>	
	Weight [kg]:	7.370
	Notation:	180° reversible
	Employment for:	Main- and sub spindle
	Shank type:	BMT
	Machine adaption:	Centering key b 18
	Tool adaption:	ER 32
	Coolant:	IC/Ext
	Pressure max [bar]:	80
	Center distance [mm]:	72

Part-#	Name	
<b>8 240 16 043</b>	<b>Tool holder C 4 IC</b>	
	Weight [kg]:	7.320
	Notation:	180° reversible
	Employment for:	right cutting tools
	Shank type:	BMT
	Machine adaption:	Centering key b 18
	Tool adaption:	heimatec Capto(TM) C 4
	Coolant:	IC/Ext
	Center distance [mm]:	72
<b>8 240 17 044</b>	<b>Boring bar holder Ø 25</b>	
	Weight [kg]:	8.200
	Notation:	180° reversible
	Employment for:	Main- and sub spindle
	Shank type:	BMT
	Machine adaption:	Centering key b 18
	Tool adaption:	Ø 25
	Coolant:	IC/Ext
	Center distance [mm]:	72
<b>8 240 17 054</b>	<b>Boring bar holder Ø 1 1/4"</b>	
	Weight [kg]:	7.800
	Notation:	180° reversible
	Employment for:	Main- and sub spindle
	Shank type:	BMT
	Machine adaption:	Centering key b 18
	Tool adaption:	Ø 1 1/4" (31,75mm)
	Coolant:	IC/Ext
	Center distance [mm]:	72
<b>8 240 17 059</b>	<b>Tool holder C 5 IC</b>	
	Weight [kg]:	7.880
	Notation:	180° reversible
	Employment for:	right cutting tools
	Shank type:	BMT
	Machine adaption:	Centering key b 18
	Tool adaption:	heimatec Capto(TM) C 5
	Coolant:	IC/Ext
	Center distance [mm]:	72
<b>8 240 17 076</b>	<b>Boring bar holder Ø 1"</b>	
	Weight [kg]:	8.120
	Notation:	180° reversible
	Employment for:	Main- and sub spindle
	Shank type:	BMT
	Machine adaption:	Centering key b 18
	Tool adaption:	Ø 1" (25,4mm)
	Coolant:	IC/Ext
	Center distance [mm]:	72
<b>8 240 17 091</b>	<b>Boring bar holder Ø 25 - slotted</b>	
	Weight [kg]:	4.860
	Notation:	180° reversible
	Version:	slotted
	Shank type:	BMT
	Machine adaption:	Centering key b 18
	Tool adaption:	Ø 25

Part-#	Name	
	Coolant:	EXT
	Center distance [mm]:	72
<b>8 240 18 028</b>	<b>Boring bar holder Ø 32</b>	
	Weight [kg]:	7.900
	Notation:	180° reversible
	Employment for:	Main- and sub spindle
	Shank type:	BMT
	Machine adaption:	Centering key b 18
	Tool adaption:	Ø 32
	Coolant:	IC/Ext
	Center distance [mm]:	72
<b>8 240 19 032</b>	<b>Boring bar holder Ø 40</b>	
	Weight [kg]:	7.671
	Notation:	180° reversible
	Employment for:	Main- and sub spindle
	Shank type:	BMT
	Machine adaption:	Centering key b 18
	Tool adaption:	Ø 40
	Coolant:	IC/Ext
	Pressure max [bar]:	80
	Center distance [mm]:	72
<b>8 240 19 044</b>	<b>Boring bar holder Ø 1 1/2"</b>	
	Weight [kg]:	7.590
	Notation:	180° reversible
	Employment for:	Main- and sub spindle
	Shank type:	BMT
	Machine adaption:	Centering key b 18
	Tool adaption:	Ø 1 1/2" (38,1mm)
	Coolant:	IC/Ext
	Center distance [mm]:	72
<b>8 240 19 048</b>	<b>Boring bar holder Ø 2"</b>	
	Weight [kg]:	6.780
	Notation:	180° reversible
	Employment for:	Main- and sub spindle
	Shank type:	BMT
	Machine adaption:	Centering key b 18
	Tool adaption:	Ø 2" (50,8mm)
	Coolant:	IC/Ext
	Center distance [mm]:	72
<b>8 240 19 067</b>	<b>Boring bar holder Ø 50</b>	
	Weight [kg]:	6.860
	Notation:	180° reversible
	Employment for:	Main- and sub spindle
	Shank type:	BMT
	Machine adaption:	Centering key b 18
	Tool adaption:	Ø 50
	Coolant:	IC/Ext
	Pressure max [bar]:	80
	Center distance [mm]:	72

Part-#	Name	
<b>8 240 19 101</b>	<b>Boring bar holder Ø 40 - slotted</b>	
	Weight [kg]:	4.390
	Notation:	180° reversible
	Version:	slotted
	Shank type:	BMT
	Machine adaption:	Centering key b 18
	Tool adaption:	Ø 40
	Coolant:	EXT
	Center distance [mm]:	72
<b>8 244 15 005</b>	<b>Combi facing holder sq. 25</b>	
	Weight [kg]:	6.510
	Shank type:	BMT
	Machine adaption:	Centering key slot b 18
	Tool adaption:	Sq. 25
	Coolant:	EXT
	Pressure max [bar]:	80
<b>8 244 15 006</b>	<b>Combi facing holder sq. 1"</b>	
	Weight [kg]:	6.530
	Shank type:	BMT
	Machine adaption:	Centering key slot b 18
	Tool adaption:	Sq. 1" (25,4mm)
	Coolant:	EXT
<b>8 249 15 012</b>	<b>Double collet chuck holder ER 25</b>	
	Notation:	180° reversible
	Employment for:	Main- and sub spindle
	Shank type:	BMT
	Machine adaption:	Centering key b 18
	Tool adaption:	ER 25
	Coolant:	IC/Ext
	Center distance [mm]:	72
<b>8 249 16 007</b>	<b>Double collet chuck holder ER 32</b>	
	Weight [kg]:	6.160
	Notation:	180° reversible
	Employment for:	Main- and sub spindle
	Shank type:	BMT
	Machine adaption:	Centering key b 18
	Tool adaption:	ER 32
	Coolant:	IC/Ext
	Center distance [mm]:	72
<b>8 251 15 003</b>	<b>Combi double turning holder sq. 25</b>	
	Notation:	180° reversible
	Shank type:	BMT
	Machine adaption:	Centering key b 18
	Tool adaption:	Sq. 25
		Sq. 25
		Sq. 25
		Sq. 25
	Coolant:	EXT
	Pressure max [bar]:	80

Part-#	Name	
<b>8 251 15 008</b>	<b>Combi double turning holder sq. 1"</b>	
	Weight [kg]:	6.590
	Shank type:	BMT
	Machine adaption:	Centering key b 18
	Tool adaption:	Sq. 1" (25,4mm)
	Coolant:	EXT
<b>8 251 15 046</b>	<b>Combi double turning holder sq. 25 IC</b>	
	Weight [kg]:	6.520
	Notation:	180° reversible
	Shank type:	BMT
	Machine adaption:	Centering key b 18
	Tool adaption:	Sq. 25
		Sq. 25
		Sq. 25
		Sq. 25
	Coolant:	IC/Ext
	Pressure max [bar]:	100
	Please note:	Key rail
<b>8 253 17 097</b>	<b>Multiple boring bar holder, double Ø 25</b>	
	Weight [kg]:	8.110
	Notation:	180° reversible
	Employment for:	Main- and sub spindle
	Shank type:	BMT
	Machine adaption:	Centering key b 18
	Tool adaption:	Ø 25
		Ø 25
		Ø 25
		Ø 25
		Ø 25
		Ø 25
	Coolant:	IC/Ext
	Center distance [mm]:	36/75/114
<b>8 253 17 115</b>	<b>Multiple boring bar holder Ø 1 1/4"</b>	
	Weight [kg]:	8.950
	Notation:	180° reversible
	Shank type:	BMT
	Machine adaption:	Centering key b 18
	Tool adaption:	Ø 1 1/4" (31,75mm)
		Ø 1 1/4" (31,75mm)
	Coolant:	IC/Ext
	Center distance [mm]:	70/110
<b>8 253 18 005</b>	<b>Double boring bar holder Ø 1 1/4"</b>	
	Weight [kg]:	9.100
	Notation:	180° reversible
	Employment for:	Main- and sub spindle
	Shank type:	BMT
	Machine adaption:	Centering key b 18
	Tool adaption:	Ø 1 1/4" (31,75mm)
	Coolant:	IC/Ext
	Center distance [mm]:	56/107

Part-#

Name

**8 253 18 006****Double boring bar holder Ø 32**

Weight [kg]:

8.860

Notation:

180° reversible

Employment for:

Main- and sub spindle

Shank type:

BMT

Machine adaption:

Centering key b 18

Tool adaption:

Ø 32

Ø 32

Coolant:

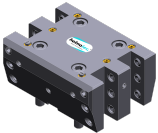
IC/Ext

Please note:

Special

Center distance [mm]:

70/110

**8 259 12 007****Multiple turning holder sq. 25/1"**

Weight [kg]:

8.790

Employment for:

Main- and sub spindle

Version:

Y-axes offset

Shank type:

BMT

Machine adaption:

Centering key b 18

Tool adaption:

Sq. 25/1" (25,4mm)

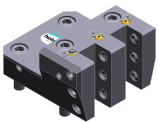
Sq. 25/1" (25,4mm)

Sq. 25/1" (25,4mm)

Sq. 25/1" (25,4mm)

Coolant:

EXT

**8 259 12 008****Multiple turning holder sq. 25/1"**

Weight [kg]:

5.000

Notation:

180° reversible

Version:

Y-axes offset

Shank type:

BMT

Machine adaption:

Centering key b 18

Tool adaption:

Sq. 25/1" (25,4 mm)

Sq. 25/1" (25,4 mm)

Coolant:

EXT

## heimatec.u-tec®

heimatec.com

Products / Tool change systems /  
u-tec® Tool-changing system



versions see catalog



## heimatec.easy-quick

heimatec.com

Products / Tool change systems /  
easy-quick HT quick-changing system



versions see catalog



## heimatec.Capto™

heimatec.com

Products / Tool change systems /  
heimatec.Capto™ quick-changing system



versions see catalog



## heimatec.accessories

heimatec.com

Products / Accessories



versions see catalog





● heimatec overseas branches

○ global representations of heimatec

**heimatec**<sup>®</sup>

**heimatec GmbH**  
Präzisionswerkzeuge  
Carl-Benz-Str. 4  
77871 Renchen  
Germany

T +49 7843 9466 0  
[www.heimatec.com](http://www.heimatec.com)  
[info@heimatec.com](mailto:info@heimatec.com)

Please find the contact details of our worldwide trading partners on our website:  
<https://heimatec.com/business-partners>