

**TOPSELLER -**  
many more available!

Live Tools

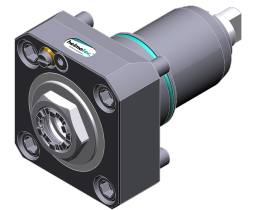
**heimatec**®

# Nakamura

## WT-300 Ø 65/71 Std.

Part-#	Tool adaption	Rotation max [1/min]	Gear ratio	Coolant	Pressure max.	Center distance
<b>Axial drilling and milling head</b>						
8 010 65 038	<b>ER 25 A - u-tec</b>	5.000	1:1	IC/Ext	100 bar	--
8 010 66 126	<b>ER 32 A - u-tec</b>	6.000	1:1	EXT	--	--
8 010 66 127	<b>ER 32 A - u-tec</b>	6.000	1:1	IC/Ext	100 bar	--
<b>Radial drilling and milling head</b>						
8 030 66 257	<b>ER 32 A - u-tec</b>	12.000	1:1	IC/Ext	140 bar	<b>65 mm</b>
8 030 66 263	<b>ER 32 A - u-tec</b>	12.000	1:1	EXT	--	<b>65 mm</b>
<b>Radial drilling and milling head, double spindle</b>						
8 039 66 028	<b>ER 32 A - u-tec</b>	12.000	1:1	EXT	--	<b>65 mm</b>
<b>Universal head, offset</b>						
8 043 65 002	<b>ER 25 A - u-tec</b>	6.000	1:1	EXT	--	<b>60 mm</b>

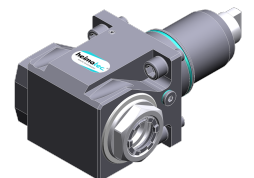
Illustrations similar.



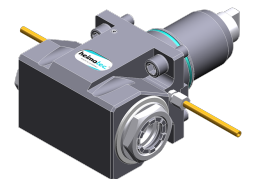
8 010 65 038



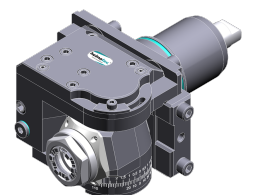
8 010 66 126



8 030 66 257



8 039 66 028



8 043 65 002

**TOPSELLER -**  
many more available!

Static Tools

**heimatec**®

# Nakamura

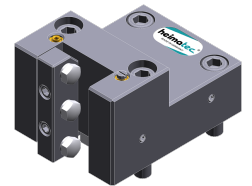
## WT-300 Ø 65/71 Std.

Part-#	Tool adaption	Coolant	Pressure max.	Center distance
<b>Cut-off holder</b>				
8 224 13 008	<b>Clampshaft SH 32</b>	EXT	--	--
<b>Universal turning holder</b>				
8 224 15 000	<b>Sq. 25</b>	EXT	--	--
8 224 15 051	<b>Sq. 25</b>	IC/Ext	100 bar	--
<b>Boring bar holder</b>				
8 240 18 000	<b>Ø 32</b>	IC/Ext	--	<b>90 mm</b>
8 240 19 000	<b>Ø 40</b>	IC/Ext	--	<b>90 mm</b>
<b>Combi multiple holder</b>				
8 251 14 009	<b>Sq. 20</b>	EXT	--	--
8 251 14 086	<b>Sq. 20</b>	IC/Ext	100 bar	--
8 251 14 021	<b>Sq. 3/4" (19,05mm)</b>	EXT	--	--
<b>Double turning holder</b>				
8 251 15 000	<b>Sq. 25</b>	EXT	--	--
<b>Cut-off holder, height adjustable</b>				
8 320 13 004	<b>Clampshaft SH 32</b>	IC/Ext	70 bar	--

Illustrations similar.



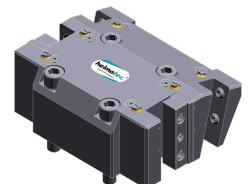
8 224 13 008



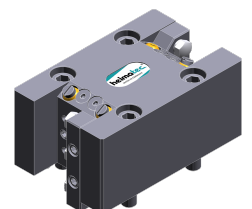
8 224 15 000



8 240 18 000



8 251 14 086



8 251 15 000