

Takisawa
TS 3000 SY/YSG
T 12



High-tech from heimatec - heimatec - Tools and systems for productive turning and milling

heimatec belongs to the international technology and quality leaders for precision tools and specializes in the development and production of high-precision static and live tools for all CNC lathes, CNC turn-/mill machines and CNC machining centers.

The range of products* spans from static BMT and VDI tool holders, live tools up to highly complex customer-specific individual solutions. heimatec, headquartered in Renchen, has a own subsidiary in Asia and India and numerous representatives as well as trading partners all over the world.

*OUR PRODCUTS

Static tool holders

Live tool units

Precision tools

Tools for turning and machining centres

Tools for swiss type lathes

Tool changing and uick-change systems


Tool systems for gear production




Digital tool management

This catalogue, including all its parts, is protected by copyright. Any use outside the restricted limitations of the Copyright Act without the consent of heimatec is inadmissible and liable to prosecution. This applies in particular to duplication, translation, microfilming and storage and processing in electronic systems.

heimatec GmbH reserves the right to make technical changes at any time without giving prior notice. This applies in particular to adjustments at any time to meet new or changed international standards, or in case of further developments of our products or manufacturing processes.

The current version of our General Terms and Conditions can be found on our website.

Part-#	Name	
8 010 66 094	Axial drilling and milling head ER 32 AX UT	
	Weight [kg]:	5.680
	Tool drive:	Flat (~DIN 1809)
	Shank size [mm]:	60.00
	Shank type:	BMT
	Tool adaption:	ER 32 A - u-tec
	Gear ratio [i]:	1:1
	Torque max [Nm]:	100
	Rotation max [1/min]:	10000
	Rotating direction:	same
	Coolant:	EXT
	Please note:	stronger bearing
8 010 66 108	Axial drilling and milling head ER 32 AX UT IC	
	Weight [kg]:	5.680
	Tool drive:	Flat (~DIN 1809)
	Shank size [mm]:	60.00
	Shank type:	BMT
	Tool adaption:	ER 32 A - u-tec
	Gear ratio [i]:	1:1
	Torque max [Nm]:	100
	Rotation max [1/min]:	6000
	Rotating direction:	same
	Coolant:	IC/Ext
	Pressure max [bar]:	25
	Please note:	stronger bearing
8 010 66 139	Axial drilling and milling head ER 32 AX UT IC	
	Weight [kg]:	5.740
	Tool drive:	Flat (~DIN 1809)
	Shank size [mm]:	60.00
	Shank type:	BMT
	Tool adaption:	ER 32 A - u-tec
	Gear ratio [i]:	1:1
	Torque max [Nm]:	100
	Rotation max [1/min]:	10000
	Rotating direction:	same
	Coolant:	IC
	Pressure max [bar]:	100
	Please note:	Dryrun possible
8 010 66 146	Axial drilling and milling head C 4 IC	
	Tool drive:	Flat (~DIN 1809)
	Shank size [mm]:	60.00
	Shank type:	BMT
	Tool adaption:	heimatec Capto(TM) C 4
	Gear ratio [i]:	1:1
	Torque max [Nm]:	80
	Rotation max [1/min]:	6000
	Rotating direction:	same
	Coolant:	IC/Ext
	Pressure max [bar]:	100
	Please note:	Check applicability; note tool length!;

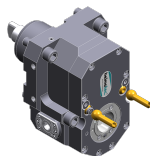
Part-#	Name	
8 010 67 117	Axial drilling and milling head ER 40 AX UT	
		<p>Weight [kg]: 6.180 Tool drive: Flat (~DIN 1809) Shank size [mm]: 60.00 Shank type: BMT Tool adaption: ER 40 u-tec Gear ratio [i]: 1:1 Torque max [Nm]: 100 Rotation max [1/min]: 10000 Rotating direction: same Coolant: EXT Please note: stronger bearing</p>
8 010 67 118	Axial drilling and milling head ER 40 AX UT IC	
		<p>Tool drive: Flat (~DIN 1809) Shank size [mm]: 60.00 Shank type: BMT Tool adaption: ER 40 A - u-tec Gear ratio [i]: 1:1 Torque max [Nm]: 100 Rotation max [1/min]: 6000 Rotating direction: same Coolant: IC/Ext Pressure max [bar]: 25 Please note: stronger bearing</p>
8 010 67 137	Axial drilling and milling head ER 40 AX UT IC	
		<p>Weight [kg]: 5.800 Tool drive: Flat (~DIN 1809) Shank size [mm]: 60.00 Shank type: BMT Tool adaption: ER 40 A - u-tec Gear ratio [i]: 1:1 Torque max [Nm]: 100 Rotation max [1/min]: 10000 Rotating direction: same Coolant: IC Pressure max [bar]: 100 Please note: Trochenlauf possible</p>
8 013 63 000	Axial drilling and milling head ER 11	
		<p>Weight [kg]: 4.760 Tool drive: Flat (~DIN 1809) Shank size [mm]: 60.00 Shank type: BMT Tool adaption: ER 11 Gear ratio [i]: 1:4 Torque max [Nm]: 5 Rotation max [1/min]: 48000 Rotating direction: same Coolant: EXT</p>

Part-#	Name	
8 013 64 003	Axial drilling and milling head ER 16 AX UT	
	Weight [kg]:	4.840
	Tool drive:	Flat (~DIN 1809)
	Shank size [mm]:	60.00
	Shank type:	BMT
	Tool adaption:	ER 16 A - u-tec
	Gear ratio [i]:	1:4
	Torque max [Nm]:	5
	Rotation max [1/min]:	24000
	Rotating direction:	same
	Coolant:	EXT
8 013 64 016	Axial drilling and milling head ER 16 AX UT IC	
	Tool drive:	Flat (~DIN 1809)
	Shank size [mm]:	60.00
	Shank type:	BMT
	Tool adaption:	ER 16 A - u-tec
	Gear ratio [i]:	1:4
	Torque max [Nm]:	5
	Rotation max [1/min]:	24000
	Rotating direction:	same
	Coolant:	IC/Ext
	Pressure max [bar]:	100
	Please note:	Dryrun possible
8 019 64 051	Axial drilling and milling head ER 20 AX UT	
	Weight [kg]:	18.420
	Tool drive:	Flat (~DIN 1809)
	Shank size [mm]:	60.00
	Shank type:	BMT
	Tool adaption:	ER 20 A - u-tec
	Gear ratio [i]:	1:1
	Torque max [Nm]:	25
	Rotation max [1/min]:	10000
	Rotating direction:	same
	Coolant:	EXT
	Please note:	stronger bearing, check applicability
	Offset [mm]:	222,5
8 019 66 002	Axial drilling and milling head ER 32 AS UT IC	
	Weight [kg]:	11.190
	Notation:	offset; 180° reversible
	Tool drive:	Flat (~DIN 1809)
	Shank size [mm]:	60.00
	Shank type:	BMT
	Tool adaption:	ER 32 A - u-tec
	Gear ratio [i]:	1:2
	Torque max [Nm]:	40
	Rotation max [1/min]:	12000
	Rotating direction:	opposite
	Coolant:	IC/Ext
	Pressure max [bar]:	140
	Please note:	stronger bearing
	Offset [mm]:	50

Part-#	Name	
8 019 66 019	Axial drilling and milling head ER 32 AX UT	
	Notation:	offset; 180° reversible
	Tool drive:	Flat (~DIN 1809)
	Shank size [mm]:	60.00
	Shank type:	BMT
	Tool adaption:	ER 32 A - u-tec
	Gear ratio [i]:	2:1
	Torque max [Nm]:	80
	Rotation max [1/min]:	3000
	Rotating direction:	opposite
	Coolant:	EXT
	Please note:	stronger bearing
	Offset [mm]:	50
8 019 66 022	Axial drilling and milling head ER 32 AS UT IC	
	Weight [kg]:	11.130
	Notation:	offset; 180° reversible
	Tool drive:	Flat (~DIN 1809)
	Shank size [mm]:	60.00
	Shank type:	BMT
	Tool adaption:	ER 32 A - u-tec
	Gear ratio [i]:	1:1
	Torque max [Nm]:	50
	Rotation max [1/min]:	10000
	Rotating direction:	opposite
	Coolant:	IC/Ext
	Pressure max [bar]:	140
	Please note:	stronger bearing
	Offset [mm]:	50
8 019 66 073	Axial drilling and milling head ER 32 AS UT	
	Notation:	offset; 180° reversible
	Tool drive:	Flat (~DIN 1809)
	Shank size [mm]:	60.00
	Shank type:	BMT
	Tool adaption:	ER 32 A - u-tec
	Gear ratio [i]:	1:2
	Torque max [Nm]:	40
	Rotation max [1/min]:	12000
	Rotating direction:	opposite
	Coolant:	EXT
	Please note:	stronger bearing
	Offset [mm]:	50
8 019 66 074	Axial drilling and milling head ER 32 AS UT	
	Weight [kg]:	9.220
	Notation:	offset; 180° reversible
	Tool drive:	Flat (~DIN 1809)
	Shank size [mm]:	60.00
	Shank type:	BMT
	Tool adaption:	ER 32 A - u-tec
	Gear ratio [i]:	1:1
	Torque max [Nm]:	50
	Rotation max [1/min]:	10000
	Rotating direction:	opposite
	Coolant:	EXT
	Please note:	stronger bearing
	Offset [mm]:	50

Part-#	Name
--------	------

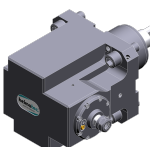
8 019 66 086



Axial drilling and milling head C 4

Weight [kg]: 10.040
 Notation: 180° reversible, Y-axes offset
 Tool drive: Flat (~DIN 1809)
 Shank size [mm]: 60.00
 Shank type: BMT
 Tool adaption: heimatec Capto(TM) C 4
 Gear ratio [i]: 1:1
 Torque max [Nm]: 50
 Rotation max [1/min]: 6000
 Rotating direction: opposite
 Coolant: EXT
 Please note: Check applicability; tool length check !
 Offset [mm]: 62

8 030 63 007



Radial drilling and milling head ER 11

Weight [kg]: 10.950
 Notation: 180° reversible
 Tool drive: Flat (~DIN 1809)
 Shank size [mm]: 60.00
 Shank type: BMT
 Tool adaption: ER 11
 Gear ratio [i]: 1:4
 Torque max [Nm]: 5
 Rotation max [1/min]: 48000
 Rotating direction: opposite
 Coolant: EXT
 Center distance [mm]: 90

8 030 66 146

Radial drilling and milling head HT 4 IC

Notation: 180° reversible
 Tool drive: Flat (~DIN 1809)
 Shank size [mm]: 60.00
 Shank type: BMT
 Tool adaption: HT 4
 Gear ratio [i]: 1:1
 Torque max [Nm]: 50
 Rotation max [1/min]: 10000
 Rotating direction: opposite
 Coolant: IC/Ext
 Pressure max [bar]: 140
 Please note: stronger bearing
 Center distance [mm]: 90

8 030 66 163



Radial drilling and milling head C 4 IC

Weight [kg]: 13.880
 Notation: 180° reversible
 Tool drive: Flat (~DIN 1809)
 Shank size [mm]: 60.00
 Shank type: BMT
 Tool adaption: heimatec Capto(TM) C 4
 Gear ratio [i]: 1:1
 Torque max [Nm]: 80
 Rotation max [1/min]: 6000
 Rotating direction: opposite
 Coolant: IC/Ext
 Pressure max [bar]: 140

Part-#	Name
--------	------

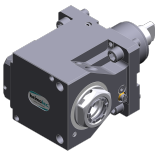
Please note: Check applicability; tool length beachten!
Center distance [mm]: 90

8 030 66 201



Radial drilling and milling head ER 32 AX UT
Weight [kg]: 12.780
Notation: 180° reversible
Tool drive: Flat (~DIN 1809)
Shank size [mm]: 60.00
Shank type: BMT
Tool adaption: ER 32 A - u-tec
Gear ratio [i]: 1:1
Torque max [Nm]: 50
Rotation max [1/min]: 10000
Rotating direction: opposite
Coolant: EXT
Please note: stronger bearing
Center distance [mm]: 90

8 030 66 208



Radial drilling and milling head ER 32 AX UT IC
Weight [kg]: 12.970
Notation: 180° reversible
Tool drive: Flat (~DIN 1809)
Shank size [mm]: 60.00
Shank type: BMT
Tool adaption: ER 32 A - u-tec
Gear ratio [i]: 1:1
Torque max [Nm]: 50
Rotation max [1/min]: 10000
Rotating direction: opposite
Coolant: IC/Ext
Pressure max [bar]: 140
Please note: stronger bearing
Center distance [mm]: 90

8 030 67 081

Radial drilling and milling head HT 5
Notation: 180° reversible
Tool drive: Flat (~DIN 1809)
Shank size [mm]: 60.00
Shank type: BMT
Tool adaption: HT 5
Gear ratio [i]: 1:1
Torque max [Nm]: 50
Rotation max [1/min]: 10000
Rotating direction: opposite
Coolant: EXT
Please note: stronger bearing
Center distance [mm]: 90

8 030 67 082

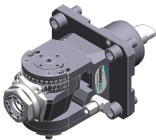
Radial drilling and milling head HT 5 IC
Notation: 180° reversible
Tool drive: Flat (~DIN 1809)
Shank size [mm]: 60.00
Shank type: BMT
Tool adaption: HT 5
Gear ratio [i]: 1:1
Torque max [Nm]: 50
Rotation max [1/min]: 10000

Part-#	Name	
	Rotating direction:	opposite
	Coolant:	IC/Ext
	Pressure max [bar]:	140
	Please note:	stronger bearing
	Center distance [mm]:	90
8 030 67 136	Radial drilling and milling head ER 40 AX UT IC	
	Weight [kg]:	13.280
	Notation:	180° reversible
	Tool drive:	Flat (~DIN 1809)
	Shank size [mm]:	60.00
	Shank type:	BMT
	Tool adaption:	ER 40 A - u-tec
	Gear ratio [i]:	1:1
	Torque max [Nm]:	50
	Rotation max [1/min]:	10000
	Rotating direction:	opposite
	Coolant:	IC/Ext
	Pressure max [bar]:	140
	Please note:	stronger bearing
	Center distance [mm]:	90
8 030 67 139	Radial drilling and milling head ER 40 AX UT	
	Weight [kg]:	13.120
	Notation:	180° reversible
	Tool drive:	Flat (~DIN 1809)
	Shank size [mm]:	60.00
	Shank type:	BMT
	Tool adaption:	ER 40 A - u-tec
	Gear ratio [i]:	1:1
	Torque max [Nm]:	50
	Rotation max [1/min]:	10000
	Rotating direction:	opposite
	Coolant:	EXT
	Please note:	stronger bearing
	Center distance [mm]:	90
8 030 68 041	Radial drilling and milling head HT 6	
	Notation:	180° reversible
	Tool drive:	Flat (~DIN 1809)
	Shank size [mm]:	60.00
	Shank type:	BMT
	Tool adaption:	HT 6
	Gear ratio [i]:	1:1
	Torque max [Nm]:	50
	Rotation max [1/min]:	10000
	Rotating direction:	opposite
	Coolant:	EXT
	Please note:	stronger bearing
	Center distance [mm]:	90
8 030 68 042	Radial drilling and milling head HT 6 IC	
	Weight [kg]:	13.260
	Notation:	180° reversible
	Tool drive:	Flat (~DIN 1809)
	Shank size [mm]:	60.00
	Shank type:	BMT
	Tool adaption:	HT 6

Part-#	Name	
	Gear ratio [i]:	1:1
	Torque max [Nm]:	50
	Rotation max [1/min]:	10000
	Rotating direction:	opposite
	Coolant:	IC/Ext
	Pressure max [bar]:	140
	Please note:	stronger bearing
	Center distance [mm]:	90
8 031 65 012	Radial milling head universal arbor 22	
	Weight [kg]:	13.100
	Notation:	180° reversible
	Tool drive:	Flat (~DIN 1809)
	Shank size [mm]:	60.00
	Shank type:	BMT
	Tool adaption:	Universal arbor 22
	Gear ratio [i]:	1:1
	Torque max [Nm]:	50
	Rotation max [1/min]:	10000
	Rotating direction:	opposite
	Coolant:	EXT
	Please note:	stronger bearing
	Center distance [mm]:	90
8 031 66 004	Radial milling head universal arbor 27	
	Weight [kg]:	13.210
	Notation:	180° reversible
	Tool drive:	Flat (~DIN 1809)
	Shank size [mm]:	60.00
	Shank type:	BMT
	Tool adaption:	Universal arbor 27
	Gear ratio [i]:	1:1
	Torque max [Nm]:	50
	Rotation max [1/min]:	10000
	Rotating direction:	opposite
	Coolant:	EXT
	Please note:	stronger bearing
	Center distance [mm]:	90
8 037 64 019	Radial disk mill head arbor 3/4"	
	Weight [kg]:	13.440
	Version:	± 45° turnable; at 0° position can be pinned
	Tool drive:	Flat (~DIN 1809)
	Shank size [mm]:	60.00
	Shank type:	BMT
	Tool adaption:	Arbor 3/4" (19,05mm)
	Gear ratio [i]:	2:1
	Torque max [Nm]:	63
	Rotation max [1/min]:	3000
	Rotating direction:	same
	Coolant:	EXT
	Please note:	strong version; stronger bearing
	Center distance [mm]:	100


Part-#	Name	
8 037 65 020	Radial disk mill head arbor 1"	
	Weight [kg]:	13.640
	Tool drive:	Flat (~DIN 1809)
	Shank size [mm]:	60.00
	Shank type:	BMT
	Tool adaption:	Arbor 1" (25,4mm)
	Gear ratio [i]:	2:1
	Torque max [Nm]:	63
	Rotation max [1/min]:	3000
	Rotating direction:	same
	Coolant:	EXT
	Please note:	strong version; stronger bearing
	Center distance [mm]:	100
8 037 65 023	Radial disk mill head arbor 22	
	Weight [kg]:	13.570
	Version:	± 45° turnable; at 0° position can be pinned
	Tool drive:	Flat (~DIN 1809)
	Shank size [mm]:	60.00
	Shank type:	BMT
	Tool adaption:	Arbor 22
	Gear ratio [i]:	2:1
	Torque max [Nm]:	63
	Rotation max [1/min]:	3000
	Rotating direction:	same
	Coolant:	EXT
	Please note:	strong version; stronger bearing
	Center distance [mm]:	100
8 037 66 007	Radial disk mill head arbor 1 1/4"	
	Weight [kg]:	13.930
	Version:	Special
	Tool drive:	Flat (~DIN 1809)
	Shank size [mm]:	60.00
	Shank type:	BMT
	Tool adaption:	Arbor 1 1/4" (31,75mm)
	Gear ratio [i]:	2:1
	Torque max [Nm]:	63
	Rotation max [1/min]:	3000
	Rotating direction:	same
	Coolant:	EXT
	Please note:	strong version; stronger bearing
	Center distance [mm]:	100
8 039 66 010	Radial drilling and milling head ER 32	
	Weight [kg]:	13.290
	Version:	double spindle
	Tool drive:	Flat (~DIN 1809)
	Shank size [mm]:	60.00
	Shank type:	BMT
	Tool adaption:	ER 32
	Gear ratio [i]:	1:1
	Torque max [Nm]:	50
	Rotation max [1/min]:	10000
	Rotating direction:	same/opposite
	Coolant:	EXT
	Please note:	stronger bearing
	Center distance [mm]:	90

Part-#	Name	
8 039 66 038	Radial drilling and milling head ER 32 AX UT	
	Weight [kg]:	12.570
	Employment for:	Main- and sub spindle
	Version:	double spindle
	Tool drive:	Flat (~DIN 1809)
	Shank size [mm]:	60.00
	Shank type:	BMT
	Tool adaption:	ER 32 A - u-tec
	Gear ratio [i]:	1:1
	Torque max [Nm]:	50
	Rotation max [1/min]:	10000
	Rotating direction:	same/opposite
	Coolant:	EXT
	Please note:	stronger bearing
	Center distance [mm]:	90
8 039 67 000	Radial drilling and milling head ER 40	
	Weight [kg]:	13.410
	Employment for:	Main- and sub spindle
	Version:	double spindle
	Tool drive:	Flat (~DIN 1809)
	Shank size [mm]:	60.00
	Shank type:	BMT
	Tool adaption:	ER 40
	Gear ratio [i]:	1:1
	Torque max [Nm]:	50
	Rotation max [1/min]:	10000
	Rotating direction:	same/opposite
	Coolant:	EXT
	Please note:	stronger bearing
	Center distance [mm]:	90
8 039 67 007	Radial drilling and milling head HT 5	
	Employment for:	Main- and sub spindle
	Version:	double spindle
	Tool drive:	Flat (~DIN 1809)
	Shank size [mm]:	60.00
	Shank type:	BMT
	Tool adaption:	HT 5
	Gear ratio [i]:	1:1
	Torque max [Nm]:	50
	Rotation max [1/min]:	10000
	Rotating direction:	same/opposite
	Coolant:	EXT
	Please note:	stronger bearing
	Center distance [mm]:	90
8 039 67 015	Radial drilling and milling head ER 40 AX UT	
	Weight [kg]:	13.000
	Employment for:	Main- and sub spindle
	Version:	double spindle
	Tool drive:	Flat (~DIN 1809)
	Shank size [mm]:	60.00
	Shank type:	BMT
	Tool adaption:	ER 40 A - u-tec
	Gear ratio [i]:	1:1
	Torque max [Nm]:	50
	Rotation max [1/min]:	10000

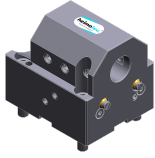
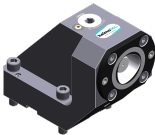
Part-#	Name	
	Rotating direction:	same/opposite
	Coolant:	EXT
	Please note:	stronger bearing
	Center distance [mm]:	90
8 039 68 008	Radial drilling and milling head HT 6	
	Employment for:	Main- and sub spindle
	Version:	double spindle
	Tool drive:	Flat (~DIN 1809)
	Shank size [mm]:	60.00
	Shank type:	BMT
	Tool adaption:	HT 6
	Gear ratio [i]:	1:1
	Torque max [Nm]:	50
	Rotation max [1/min]:	10000
	Rotating direction:	same/opposite
	Coolant:	EXT
	Please note:	stronger bearing
	Center distance [mm]:	90
8 040 64 011	Universal head ± 90° adjustable ER 16 AX UT	
	Weight [kg]:	5.750
	Tool drive:	Flat (~DIN 1809)
	Shank size [mm]:	60.00
	Shank type:	BMT
	Tool adaption:	ER 16 A - u-tec
	Gear ratio [i]:	1:2
	Torque max [Nm]:	12
	Rotation max [1/min]:	12000
	Rotating direction:	opposite
	Coolant:	EXT
	Please note:	Note swivel range !
	Center distance [mm]:	81
8 040 65 004	Universal head ± 90° adjustable ER 25 AX UT	
	Weight [kg]:	6.000
	Tool drive:	Flat (~DIN 1809)
	Shank size [mm]:	60.00
	Shank type:	BMT
	Tool adaption:	ER 25 A - u-tec
	Gear ratio [i]:	1:1
	Torque max [Nm]:	25
	Rotation max [1/min]:	6000
	Rotating direction:	opposite
	Coolant:	EXT
	Please note:	Note swivel range !; stronger bearing
	Center distance [mm]:	81
8 040 65 008	Universal head ± 90° adjustable ER 25 AX UT IC	
	Weight [kg]:	5.990
	Tool drive:	Flat (~DIN 1809)
	Shank size [mm]:	60.00
	Shank type:	BMT
	Tool adaption:	ER 25 A - u-tec
	Gear ratio [i]:	1:1
	Torque max [Nm]:	25
	Rotation max [1/min]:	6000


Part-#	Name	
	Rotating direction:	opposite
	Coolant:	IC/Ext
	Pressure max [bar]:	140
	Please note:	Note swivel range !
	Center distance [mm]:	81
8 040 65 019	Universal head ± 90° adjustable ER 25 AX UT	
	Weight [kg]:	6.000
	Version:	at 45° position can be pinned
	Tool drive:	Flat (~DIN 1809)
	Shank size [mm]:	60.00
	Shank type:	BMT
	Tool adaption:	ER 25 A - u-tec
	Gear ratio [i]:	1:1
	Torque max [Nm]:	25
	Rotation max [1/min]:	10000
	Rotating direction:	opposite
	Coolant:	EXT
	Please note:	Note swivel range!; stronger bearing
	Center distance [mm]:	81
8 050 65 000	Multispindle drilling head ER 25 AX UT	
	Weight [kg]:	8.260
	Version:	2-spindles
	Tool drive:	Flat (~DIN 1809)
	Shank size [mm]:	60.00
	Shank type:	BMT
	Tool adaption:	ER 25 A - u-tec
	Gear ratio [i]:	1:1
	Torque max [Nm]:	32/Sp.
	Rotation max [1/min]:	6000
	Rotating direction:	opposite
	Coolant:	EXT
	Please note:	stronger bearing
8 050 65 001	Multispindle drilling head ER 25 AX UT IC	
	Weight [kg]:	8.240
	Version:	2-spindles
	Tool drive:	Flat (~DIN 1809)
	Shank size [mm]:	60.00
	Shank type:	BMT
	Tool adaption:	ER 25 A - u-tec
	Gear ratio [i]:	1:1
	Torque max [Nm]:	32/Sp.
	Rotation max [1/min]:	6000
	Rotating direction:	opposite
	Coolant:	IC/Ext
	Pressure max [bar]:	25
	Please note:	stronger bearing
8 050 65 022	Multispindle drilling head ER 25 AX UT IC	
	Weight [kg]:	8.790
	Version:	2-spindles
	Tool drive:	Flat (~DIN 1809)
	Shank size [mm]:	60.00
	Shank type:	BMT
	Tool adaption:	ER 25 A - u-tec


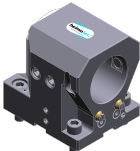
Takisawa
TS 3000 SY/YSG T 12

Part-#	Name	
	Gear ratio [i]:	1:1
	Torque max [Nm]:	32/Sp.
	Rotation max [1/min]:	10000
	Rotating direction:	opposite
	Coolant:	IC/Ext
	Pressure max [bar]:	140
	Please note:	stronger bearing
	Offset [mm]:	+35/ -35
8 053 65 014	Multispindle radial head ER 25 AX UTIK	
	Weight [kg]:	14.270
	Notation:	180° reversible
	Version:	2-spindles
	Tool drive:	Flat (~DIN 1809)
	Shank size [mm]:	60.00
	Shank type:	BMT
	Tool adaption:	ER 25 A - u-tec
	Gear ratio [i]:	1:1
	Torque max [Nm]:	32/Sp
	Rotation max [1/min]:	10000
	Rotating direction:	same
	Coolant:	IC/Ext
	Pressure max [bar]:	140
	Center distance [mm]:	90
	Offset [mm]:	±35
8 200 64 001	Cover plate	
	Weight [kg]:	2.610
	Shank type:	BMT
8 202 10 010	Basic holder longitudinal seat FN 12	
	Weight [kg]:	2.370
	Notation:	180° reversible
	Shank type:	BMT
	Machine adaption:	Centering key slot b 20
	Tool adaption:	Interface FN 12
	Coolant:	EXT
8 224 12 007	Cut-off holder sq. 25	
	Weight [kg]:	3.500
	Shank type:	BMT
	Machine adaption:	Centering key slot b 20
	Tool adaption:	Sq. 25
	Coolant:	EXT
8 224 12 017	Cut-off holder sq. 1"	
	Weight [kg]:	4.050
	Shank type:	BMT
	Machine adaption:	Centering key slot b 20
	Tool adaption:	Sq. 1" (25,4mm)
	Coolant:	EXT

Part-#	Name	
8 224 14 002	Universal turning holder sq. 20	
	Weight [kg]:	4.910
	Shank type:	BMT
	Machine adaption:	Centering key slot b 20
	Tool adaption:	Sq. 20 Sq. 20
	Coolant:	EXT
	Pressure max [bar]:	80
8 224 15 003	Universal turning holder sq. 25	
	Weight [kg]:	5.460
	Shank type:	BMT
	Machine adaption:	Centering key slot b 20
	Tool adaption:	Sq. 25 Sq. 25
	Coolant:	EXT
	Pressure max [bar]:	80
8 224 15 014	Universal turning holder sq. 1"	
	Weight [kg]:	5.560
	Shank type:	BMT
	Machine adaption:	Centering key slot b 20
	Tool adaption:	Sq. 1" (25,4mm) Sq. 1" (25,4mm)
	Coolant:	EXT
8 240 14 003	Insert drill holder 12 IC	
	Weight [kg]:	8.870
	Notation:	180° reversible
	Shank type:	BMT
	Machine adaption:	Centering key slot b 20
	Tool adaption:	Whistle-Notch (DIN 1835 E) 12
	Coolant:	IC
	Center distance [mm]:	80
8 240 15 014	Insert drill holder 16 IC	
	Weight [kg]:	8.820
	Notation:	180° reversible
	Shank type:	BMT
	Machine adaption:	Centering key slot b 20
	Tool adaption:	Whistle-Notch (DIN 1835 E) 16
	Coolant:	IC
	Center distance [mm]:	80
8 240 16 039	Collet chuck holder ER 32	
	Weight [kg]:	7.570
	Notation:	180° reversible
	Shank size [mm]:	59.70
	Shank type:	BMT
	Machine adaption:	Centering key slot b 20
	Tool adaption:	ER 32
	Coolant:	IC/Ext
	Pressure max [bar]:	80
	Please note:	Insert reversible
	Center distance [mm]:	80

Part-#	Name	
8 240 16 057	Tool holder ABS 63	
	Weight [kg]:	8.050
	Notation:	180° reversible
	Shank size [mm]:	59.70
	Shank type:	BMT
	Machine adaption:	Centering key slot b 20
	Tool adaption:	ABS 63
	Coolant:	IC/Ext
	Please note:	Insert reversible
	Center distance [mm]:	80
8 240 17 022	Collet chuck holder ER 40	
	Weight [kg]:	7.720
	Notation:	180° reversible
	Shank size [mm]:	59.70
	Shank type:	BMT
	Machine adaption:	Centering key slot b 20
	Tool adaption:	ER 40
	Coolant:	IC/Ext
	Pressure max [bar]:	80
	Please note:	Insert reversible
	Center distance [mm]:	80
8 240 17 112	Boring bar holder Ø 1 1/4"	
	Weight [kg]:	9.010
	Notation:	180° reversible
	Shank size [mm]:	59.70
	Shank type:	BMT
	Machine adaption:	Centering key slot b 20
	Tool adaption:	Ø 1 1/4" (31,75mm)
	Coolant:	IC/Ext
	Center distance [mm]:	80
8 240 18 019	Tool holder HT 6	
	Weight [kg]:	7.900
	Notation:	180° reversible
	Shank type:	BMT
	Machine adaption:	Centering key slot b 20
	Tool adaption:	HT 6
	Coolant:	IC/Ext
	Please note:	Insert reversible
	Center distance [mm]:	80
8 240 18 034	Tool holder C 6 IC	
	Weight [kg]:	13.920
	Shank type:	BMT
	Machine adaption:	Centering key slot b 20
	Tool adaption:	heimatec Capto(TM) C 6
	Coolant:	IC
	Please note:	Check applicability; note tool length!
	Center distance [mm]:	110

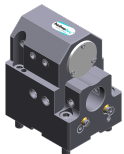
Part-#	Name	
8 240 18 075	Insert drill holder 32 IC	
	Weight [kg]:	9.620
	Notation:	180° reversible
	Shank size [mm]:	60.00
	Shank type:	BMT
	Machine adaption:	Centering key slot b 20
	Tool adaption:	Ø 32
	Coolant:	IC
	Center distance [mm]:	80
8 240 19 015	Boring bar holder Ø 40	
	Weight [kg]:	8.440
	Notation:	180° reversible
	Shank size [mm]:	59.70
	Shank type:	BMT
	Machine adaption:	Centering key slot b 20
	Tool adaption:	Ø 40
	Coolant:	IC/Ext
	Pressure max [bar]:	80
	Center distance [mm]:	80
8 240 19 016	Boring bar holder Ø 50	
	Weight [kg]:	8.170
	Notation:	180° reversible
	Shank type:	BMT
	Machine adaption:	Centering key slot b 20
	Tool adaption:	Ø 50
	Coolant:	IC/Ext
	Pressure max [bar]:	80
	Center distance [mm]:	80
8 240 19 018	Boring bar holder Ø 50	
	Weight [kg]:	12.160
	Employment for:	Heavy duty cutting
	Version:	long
	Shank type:	BMT
	Machine adaption:	Centering key slot b 20
	Tool adaption:	Ø 50
	Coolant:	IC/Ext
	Please note:	optimum assembly with 8 788 99 000 possible
	Center distance [mm]:	80
8 240 19 033	Boring bar holder Ø 40	
	Weight [kg]:	11.210
	Notation:	180° reversible
	Version:	long
	Shank type:	BMT
	Machine adaption:	Centering key slot b 20
	Tool adaption:	Ø 40
	Coolant:	IC/Ext
	Pressure max [bar]:	80
	Center distance [mm]:	120

Part-#	Name	
8 240 19 035	Boring bar holder Ø 1 1/2"	
	Weight [kg]:	8.780
	Notation:	180° reversible
	Shank size [mm]:	59.70
	Shank type:	BMT
	Machine adaption:	Centering key slot b 20
	Tool adaption:	Ø 1 1/2" (38,1mm)
	Coolant:	IC/Ext
	Center distance [mm]:	80
8 240 19 041	Insert drill holder 40 IC	
	Weight [kg]:	9.270
	Notation:	180° reversible
	Shank type:	BMT
	Machine adaption:	Centering key slot b 20
	Tool adaption:	Ø 40
	Coolant:	IC
	Center distance [mm]:	80
8 240 19 050	Boring bar holder Ø 2"	
	Weight [kg]:	8.120
	Notation:	180° reversible
	Shank size [mm]:	59.70
	Shank type:	BMT
	Machine adaption:	Centering key slot b 20
	Tool adaption:	Ø 2" (50,8mm)
	Coolant:	IC/Ext
	Center distance [mm]:	80
8 240 19 082	Boring bar holder Ø 1 1/2"	
	Weight [kg]:	11.500
	Notation:	180° reversible
	Shank type:	BMT
	Machine adaption:	Centering key slot b 20
	Tool adaption:	Ø 1 1/2" (38,1mm)
	Coolant:	IC/Ext
	Center distance [mm]:	120
8 240 19 083	Boring bar holder Ø 2"	
	Weight [kg]:	10.940
	Notation:	180° reversible
	Shank type:	BMT
	Machine adaption:	Centering key slot b 20
	Tool adaption:	Ø 2" (50,8mm)
	Coolant:	IC/Ext
	Center distance [mm]:	120
8 240 19 084	Boring bar holder Ø 2 1/2"	
	Weight [kg]:	8.580
	Notation:	180° reversible
	Shank type:	BMT
	Machine adaption:	Centering key slot b 20
	Tool adaption:	Ø 2 1/2" (63,5mm)
	Coolant:	IC/Ext
	Center distance [mm]:	80

Part-#	Name	
8 240 19 107	Boring bar holder Ø 40	
	Weight [kg]:	10.200
	Notation:	180° reversible
	Shank type:	BMT
	Machine adaption:	Centering key slot b 20
	Tool adaption:	Ø 40
	Coolant:	IC/Ext
	Center distance [mm]:	100
8 244 15 001	Combi facing holder sq. 25	
	Weight [kg]:	9.600
	Notation:	180° reversible
	Shank type:	BMT
	Machine adaption:	Centering key slot b 20
	Tool adaption:	Sq. 25
		Sq. 25
	Coolant:	EXT
	Pressure max [bar]:	80
	Center distance [mm]:	75
8 244 15 004	Combi facing holder sq. 1"	
	Weight [kg]:	9.610
	Notation:	180° reversible
	Shank type:	BMT
	Machine adaption:	Centering key slot b 20
	Tool adaption:	Sq. 1" (25,4mm)
		Sq. 1" (25,4mm)
	Coolant:	EXT
	Center distance [mm]:	75
8 249 16 004	Double collet chuck holder ER 32	
	Weight [kg]:	8.040
	Notation:	180° reversible
	Employment for:	Main- and sub spindle
	Shank type:	BMT
	Machine adaption:	Centering key slot b 20
	Tool adaption:	ER 32
	Coolant:	IC/Ext
	Pressure max [bar]:	80
	Center distance [mm]:	80
8 249 16 006	Double tool holder C 4 IC	
	Weight [kg]:	7.570
	Notation:	180° reversible
	Employment for:	Main- and sub spindle
	Version:	right
	Shank type:	BMT
	Machine adaption:	Centering key slot b 20
	Tool adaption:	heimatec Capto(TM) C 4
		heimatec Capto(TM) C 4
	Coolant:	IC
	Please note:	Check applicability; note tool length!
	Center distance [mm]:	90

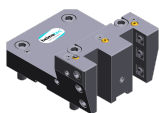
Part-#	Name	
8 249 16 010	Double collet chuck holder ER 32	
	Weight [kg]:	11.370
	Notation:	180° reversible
	Employment for:	Main- and sub spindle
	Shank type:	BMT
	Machine adaption:	Centering key slot b 20
	Tool adaption:	ER 32
	Coolant:	IC/Ext
	Pressure max [bar]:	80
	Center distance [mm]:	120
8 249 17 002	Double collet chuck holder ER 40	
	Weight [kg]:	8.330
	Notation:	180° reversible
	Employment for:	Main- and sub spindle
	Shank size [mm]:	59.70
	Shank type:	BMT
	Machine adaption:	Centering key slot b 20
	Tool adaption:	ER 40
	Coolant:	IC/Ext
	Pressure max [bar]:	80
	Center distance [mm]:	80
8 249 18 000	Double tool holder HT 6	
	Notation:	180° reversible
	Employment for:	Main- and sub spindle
	Shank type:	BMT
	Machine adaption:	Centering key slot b 20
	Tool adaption:	HT 6
	Coolant:	EXT
	Center distance [mm]:	80
8 251 14 007	Combi double turning holder sq. 20	
	Weight [kg]:	7.800
	Shank type:	BMT
	Machine adaption:	Centering key slot b 20
	Tool adaption:	Sq. 20
	Coolant:	EXT
8 251 15 001	Combi double turning holder sq. 25	
	Weight [kg]:	8.280
	Version:	short
	Shank type:	BMT
	Machine adaption:	Centering key slot b 20
	Tool adaption:	Sq. 25
		Sq. 25
		Sq. 25
		Sq. 25
	Coolant:	EXT
	Pressure max [bar]:	80
8 251 15 002	Combi double turning holder sq. 25	
	Weight [kg]:	10.020
	Version:	extended
	Shank type:	BMT
	Machine adaption:	Centering key slot b 20
	Tool adaption:	Sq. 25
		Sq. 25

Part-#	Name	
		Sq. 25 Sq. 25 EXT 80
	Coolant:	
	Pressure max [bar]:	
8 251 15 009	Combi double turning holder sq. 1"	
	Weight [kg]:	8.290
	Version:	short
	Shank type:	BMT
	Machine adaption:	Centering key slot b 20
	Tool adaption:	Sq. 1" (25,4mm)
	Coolant:	EXT
8 251 15 010	Combi double turning holder sq. 1"	
	Weight [kg]:	10.030
	Version:	long
	Shank type:	BMT
	Machine adaption:	Centering key slot b 20
	Tool adaption:	Sq. 1" (25,4mm)
	Coolant:	EXT
8 253 18 001	Double boring bar holder Ø 32	
	Weight [kg]:	11.900
	Employment for:	Main- and sub spindle
	Shank type:	BMT
	Machine adaption:	Centering key b 20
	Tool adaption:	Ø 32
	Coolant:	IC/Ext
	Pressure max [bar]:	80
	Center distance [mm]:	80/125
8 253 18 007	Double boring bar holder Ø 1 1/4"	
	Weight [kg]:	12.440
	Employment for:	Main- and sub spindle
	Shank size [mm]:	59.70
	Shank type:	BMT
	Machine adaption:	Centering key b 20
	Tool adaption:	Ø 1 1/4" (31,75mm)
	Coolant:	IC/Ext
	Center distance [mm]:	80/125
8 253 18 010	Double boring bar holder Ø 1 1/2"	
	Weight [kg]:	11.260
	Employment for:	Main- and sub spindle
	Shank size [mm]:	59.70
	Shank type:	BMT
	Machine adaption:	Centering key b 20
	Tool adaption:	Ø 1 1/2" (38,1mm)
	Coolant:	IC/Ext
	Center distance [mm]:	65/120



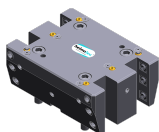
Part-#	Name
--------	------

8 259 12 001 Multiple turning holder sq. 25 / 1"



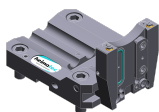
Weight [kg]: 6.470
 Notation: 180° reversible
 Version: Y-axes offset
 Shank type: BMT
 Machine adaption: Centering key slot b 20
 Tool adaption: Sq. 25
 Sq. 25
 Coolant: EXT

8 259 12 002 Multiple turning holder sq. 25 / 1"



Weight [kg]: 11.830
 Employment for: Main- and sub spindle
 Version: Y-axes offset
 Shank type: BMT
 Machine adaption: Centering key slot b 20
 Tool adaption: Sq. 25/1" (25,4mm)
 Sq. 25/1" (25,4mm)
 Sq. 25/1" (25,4mm)
 Sq. 25/1" (25,4mm)
 Coolant: EXT

8 320 13 009 Cut-off holder, height adjustable SH 32 IC



Weight [kg]: 2.990
 Notation: 180° reversible
 Shank type: BMT
 Machine adaption: Centering key slot b 20
 Tool adaption: Clampshaft SH 32
 Coolant: IC/Ext
 Pressure max [bar]: 70

8 320 19 005 Cut-off holder, height adjustable 845 IC

Weight [kg]: 2.830
 Notation: 180° reversible
 Shank type: BMT
 Machine adaption: Centering key slot b 20
 Tool adaption:  System 845
 Coolant: IC
 Pressure max [bar]: 70



● heimatec overseas branches

○ global representations of heimatec

heimatec[®]

heimatec GmbH
Präzisionswerkzeuge
Carl-Benz-Str. 4
77871 Renchen
Germany

T +49 7843 9466 0
www.heimatec.com
info@heimatec.com

Please find the contact details of our worldwide trading partners on our website:
<https://heimatec.com/business-partners>