

**TOPSELLER -**  
many more available!

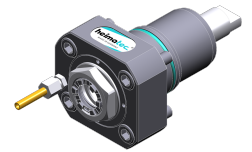
Live Tools

**heimatec**®

# Nakamura WT-150 II (24 Stationen)

Part-#	Tool adaption	Rotation max [1/min]	Gear ratio	Coolant	Pressure max.	Center distance
<b>Axial drilling and milling head</b>						
8 010 55 109	<b>ER 25 A - u-tec</b>	12.000	1:1	EXT	--	--
8 010 55 111	<b>ER 25 A - u-tec</b>	15.000	1:1	IC/Ext	100 bar	--
8 010 56 151	<b>ER 32 A - u-tec</b>	12.000	1:1	EXT	--	--
8 010 56 153	<b>ER 32 A - u-tec</b>	15.000	1:1	IC/Ext	100 bar	--
<b>Radial drilling and milling head</b>						
8 030 55 238	<b>ER 25 A - u-tec</b>	12.000	1:1	EXT	--	<b>65 mm</b>
8 030 55 239	<b>ER 25 A - u-tec</b>	12.000	1:1	IC/Ext	140 bar	<b>65 mm</b>
8 030 55 240	<b>ER 25 A - u-tec</b>	12.000	1:1	EXT	--	<b>75 mm</b>
8 030 55 241	<b>ER 25 A - u-tec</b>	12.000	1:1	IC/Ext	140 bar	<b>75 mm</b>
8 030 56 235	<b>ER 32 A - u-tec</b>	12.000	1:1	EXT	--	<b>65 mm</b>
8 030 56 236	<b>ER 32 A - u-tec</b>	12.000	1:1	IC/Ext	140 bar	<b>65 mm</b>
8 030 56 237	<b>ER 32 A - u-tec</b>	12.000	1:1	EXT	--	<b>75 mm</b>
8 030 56 238	<b>ER 32 A - u-tec</b>	12.000	1:1	IC/Ext	140 bar	<b>75 mm</b>
<b>Radial drilling and milling head, double spindle</b>						
8 039 55 042	<b>ER 25 A - u-tec</b>	12.000	1:1	EXT	--	<b>65 mm</b>
8 039 56 016	<b>ER 32 A - u-tec</b>	12.000	1:1	EXT	--	<b>65 mm</b>
<b>Universal head, offset</b>						
8 043 54 000	<b>ER 16 A - u-tec</b>	6.000	1:1	EXT	--	<b>69 mm</b>
8 043 54 001	<b>ER 16 A - u-tec</b>	6.000	1:1	IC/Ext	140 bar	<b>69 mm</b>

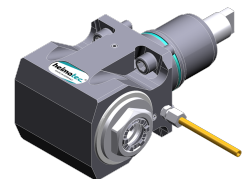
Illustrations similar.



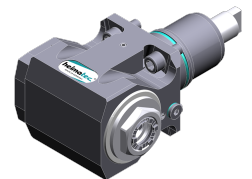
8 010 55 109



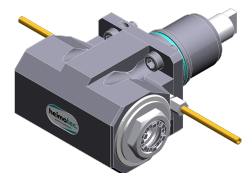
8 010 55 111



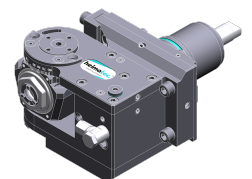
8 030 55 238



8 030 55 239



8 039 55 042



8 043 54 000

**TOPSELLER -**  
many more available!

Static Tools

**heimatec**®

# Nakamura WT-150 II (24 Stationen)

Part-#	Tool adaption	Coolant	Pressure max.	Center distance
<b>Cut-off holder</b>				
8 224 13 007	<b>Clampshaft SH 32</b>	EXT	--	--
<b>Universal turning holder</b>				
8 224 14 016	<b>Sq. 20</b>	IC/Ext	100 bar	--
8 224 15 002	<b>Sq. 25</b>	EXT	--	--
8 224 15 062	<b>Sq. 25</b>	IC/Ext	100 bar	--
<b>Boring bar holder</b>				
8 240 17 005	<b>Ø 25</b>	IC/Ext	--	<b>75 mm</b>
8 240 18 010	<b>Ø 32</b>	IC/Ext	140 bar	<b>75 mm</b>
8 240 19 009	<b>Ø 40</b>	IC/Ext	--	<b>75 mm</b>
<b>Double turning holder</b>				
8 251 11 003	<b>Sq. 20</b>	EXT	--	--
8 251 14 100	<b>Sq. 20</b>	IC/Ext	100 bar	--
8 251 12 006	<b>Sq. 25</b>	EXT	--	--
8 251 15 048	<b>Sq. 25</b>	IC/Ext	100 bar	--
<b>Combi multiple holder</b>				
8 251 14 006	<b>Sq. 20</b>	EXT	--	--
8 251 14 074	<b>Sq. 20</b>	IC/Ext	100 bar	--
<b>Cut-off holder, height adjustable</b>				
8 320 12 010	<b>Clampshaft SH 26</b>	IC/Ext	70 bar	--
8 320 13 002	<b>Clampshaft SH 32</b>	IC/Ext	70 bar	--

Illustrations similar.



8 224 13 007



8 224 14 016



8 240 17 005



8 251 11 003