

Tsugami  
**B0386-II**



# High-tech from heimatec - heimatec - Tools and systems for productive turning and milling

heimatec belongs to the international technology and quality leaders for precision tools and specializes in the development and production of high-precision static and live tools for all CNC lathes, CNC turn-/mill machines and CNC machining centers.

The range of products\* spans from static BMT and VDI tool holders, live tools up to highly complex customer-specific individual solutions. heimatec, headquartered in Renchen, has a own subsidiary in Asia and India and numerous representatives as well as trading partners all over the world.

## \*OUR PRODCUTS

Static tool holders

Live tool units

Precision tools

Tools for turning and machining centres

Tools for swiss type lathes

Tool changing and uick-change systems

Tool systems for gear production

Digital tool management

This catalogue, including all its parts, is protected by copyright. Any use outside the restricted limitations of the Copyright Act without the consent of heimatec is inadmissible and liable to prosecution. This applies in particular to duplication, translation, microfilming and storage and processing in electronic systems.

**heimatec GmbH** reserves the right to make technical changes at any time without giving prior notice. This applies in particular to adjustments at any time to meet new or changed international standards, or in case of further developments of our products or manufacturing processes.

The current version of our General Terms and Conditions can be found on our website.

Part-#	Name
--------	------

**3 013 43 000**

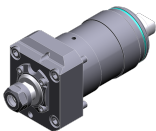
**Axial drilling and milling head ER 11**



Weight [kg]:	0.760
Tool drive:	Flat (~DIN 1809)
Shank size [mm]:	42.00
Shank type:	BMT
Tool adaption:	ER 11
Gear ratio [i]:	1:4
Torque max [Nm]:	2,5
Rotation max [1/min]:	48000
Rotating direction:	same
Coolant:	no

**3 013 43 001**

**Axial drilling and milling head ER 11**



Weight [kg]:	1.230
Tool drive:	Flat (~DIN 1809)
Shank size [mm]:	46.00
Shank type:	BMT
Tool adaption:	ER 11
Gear ratio [i]:	1:4
Torque max [Nm]:	2,5
Rotation max [1/min]:	48000
Rotating direction:	same
Coolant:	no



● heimatec overseas branches

○ global representations of heimatec

**heimatec**<sup>®</sup>

**heimatec GmbH**  
Präzisionswerkzeuge  
Carl-Benz-Str. 4  
77871 Renchen  
Germany

T +49 7843 9466 0  
[www.heimatec.com](http://www.heimatec.com)  
[info@heimatec.com](mailto:info@heimatec.com)

Please find the contact details of our worldwide trading partners on our website:  
<https://heimatec.com/business-partners>