

Miyano

**BNE 51 S oberer  
Revolver -  
Kegelrad**



# High-tech from heimatec - heimatec - Tools and systems for productive turning and milling

heimatec belongs to the international technology and quality leaders for precision tools and specializes in the development and production of high-precision static and live tools for all CNC lathes, CNC turn-/mill machines and CNC machining centers.

The range of products\* spans from static BMT and VDI tool holders, live tools up to highly complex customer-specific individual solutions. heimatec, headquartered in Renchen, has a own subsidiary in Asia and India and numerous representatives as well as trading partners all over the world.

## \*OUR PRODCUTS

Static tool holders

Live tool units

Precision tools

Tools for turning and machining centres

Tools for swiss type lathes

Tool changing and uick-change systems

Tool systems for gear production


Digital tool management

This catalogue, including all its parts, is protected by copyright. Any use outside the restricted limitations of the Copyright Act without the consent of heimatec is inadmissible and liable to prosecution. This applies in particular to duplication, translation, microfilming and storage and processing in electronic systems.

**heimatec GmbH** reserves the right to make technical changes at any time without giving prior notice. This applies in particular to adjustments at any time to meet new or changed international standards, or in case of further developments of our products or manufacturing processes.

The current version of our General Terms and Conditions can be found on our website.


## BNE 51 S oberer Revolver - Kegelrad

| Part-#  | Name  |                  |
|---|---|------------------|
| <b>8 010 44 019</b>   | <b>Axial drilling and milling head ER 20 M</b>    |                  |
|   | Weight [kg]:                                      | 2.190            |
|   | Tool drive:                                       | Bevel gear       |
|   | Shank size [mm]:                                  | 45.00            |
|   | Shank type:                                       | BMT              |
|   | Tool adaption:                                    | ER 20 M          |
|   | Gear ratio [i]:                                   | 1:1              |
|   | Torque max [Nm]:                                  | 25               |
|   | Rotation max [1/min]:                             | 6000             |
|   | Rotating direction:                               | same             |
|   | Coolant:  | EXT              |
| <b>8 010 45 035</b>   | <b>Axial drilling and milling head ER 25 M IC</b> |                  |
|  | Weight [kg]:                                      | 2.560            |
|   | Tool drive:                                       | Bevel gear       |
|   | Shank size [mm]:                                  | 45.00            |
|   | Shank type:                                       | BMT              |
|   | Tool adaption:                                    | ER 25 M          |
|   | Gear ratio [i]:                                   | 1:1              |
|   | Torque max [Nm]:                                  | 25               |
|   | Rotation max [1/min]:                             | 6000             |
|   | Rotating direction:                               | same             |
|   | Coolant:  | IC/Ext           |
|   | Pressure max [bar]:                               | 25               |
| <b>8 010 45 038</b>   | <b>Axial drilling and milling head ER 25 M</b>    |                  |
|   | Weight [kg]:                                      | 2.200            |
|   | Tool drive:                                       | Bevel gear       |
|   | Shank size [mm]:                                  | 45.00            |
|   | Shank type:                                       | BMT              |
|   | Tool adaption:                                    | ER 25 M          |
|   | Gear ratio [i]:                                   | 1:1              |
|   | Torque max [Nm]:                                  | 25               |
|   | Rotation max [1/min]:                             | 6000             |
|   | Rotating direction:                               | same             |
|   | Coolant:  | EXT              |
| <b>8 010 45 058</b>   | <b>Axial drilling and milling head ER 25 M IC</b> |                  |
|   | Weight [kg]:                                      | 2.580            |
|   | Tool drive:                                       | Bevel gear       |
|   | Shank size [mm]:                                  | 45.00            |
|   | Shank type:                                       | BMT              |
|   | Tool adaption:                                    | ER 25 M          |
|   | Gear ratio [i]:                                   | 1:1              |
|   | Torque max [Nm]:                                  | 25               |
|   | Rotation max [1/min]:                             | 6000             |
|   | Rotating direction:                               | same             |
|   | Coolant:  | IC/Ext           |
|   | Pressure max [bar]:                               | 25               |
|   | Please note:                                      | stronger bearing |

## BNE 51 S oberer Revolver - Kegelrad

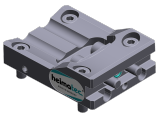
| Part-#              | Name   |                    |
|---------------------|--|--------------------|
| <b>8 011 44 005</b> | <b>Axial milling head universal arbor 16</b>     |                    |
|                     | Weight [kg]:                                     | 2.480              |
|                     | Tool drive:                                      | Bevel gear         |
|                     | Shank size [mm]:                                 | 45.00              |
|                     | Shank type:                                      | BMT                |
|                     | Tool adaption:                                   | Universal arbor 16 |
|                     | Gear ratio [i]:                                  | 1:1                |
|                     | Torque max [Nm]:                                 | 25                 |
|                     | Rotation max [1/min]:                            | 6000               |
|                     | Rotating direction:                              | same               |
|                     | Coolant:   | EXT                |
|                     | Please note:                                     | stronger bearing   |
| <b>8 011 45 013</b> | <b>Axial milling head universal arbor 22</b>     |                    |
|                     | Weight [kg]:                                     | 2.580              |
|                     | Tool drive:                                      | Bevel gear         |
|                     | Shank size [mm]:                                 | 45.00              |
|                     | Shank type:                                      | BMT                |
|                     | Tool adaption:                                   | Universal arbor 22 |
|                     | Gear ratio [i]:                                  | 1:1                |
|                     | Torque max [Nm]:                                 | 25                 |
|                     | Rotation max [1/min]:                            | 6000               |
|                     | Rotating direction:                              | same               |
|                     | Coolant:   | EXT                |
|                     | Please note:                                     | stronger bearing   |
| <b>8 030 44 012</b> | <b>Radial drilling and milling head ER 20 IC</b> |                    |
|                     | Notation:  | 180° reversible    |
|                     | Tool drive:                                      | Bevel gear         |
|                     | Shank size [mm]:                                 | 45.00              |
|                     | Shank type:                                      | BMT                |
|                     | Tool adaption:                                   | ER 20              |
|                     | Gear ratio [i]:                                  | 1:1                |
|                     | Torque max [Nm]:                                 | 25                 |
|                     | Rotation max [1/min]:                            | 6000               |
|                     | Rotating direction:                              | opposite           |
|                     | Coolant:   | IC/Ext             |
|                     | Pressure max [bar]:                              | 140                |
|                     | Center distance [mm]:                            | 55                 |
| <b>8 030 44 019</b> | <b>Radial drilling and milling head ER 16</b>    |                    |
|                     | Weight [kg]:                                     | 4.660              |
|                     | Notation:  | 180° reversible    |
|                     | Tool drive:                                      | Bevel gear         |
|                     | Shank size [mm]:                                 | 45.00              |
|                     | Shank type:                                      | BMT                |
|                     | Tool adaption:                                   | ER 16              |
|                     | Gear ratio [i]:                                  | 1:2                |
|                     | Torque max [Nm]:                                 | 12                 |
|                     | Rotation max [1/min]:                            | 12000              |
|                     | Rotating direction:                              | opposite           |
|                     | Coolant:   | EXT                |
|                     | Center distance [mm]:                            | 55                 |

## BNE 51 S oberer Revolver - Kegelrad


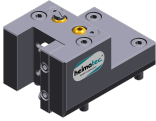
| Part-#  | Name  |                      |
|---|---|----------------------|
| <b>8 030 44 022</b>   | <b>Radial drilling and milling head ER 20 AX</b>    |                      |
|   | Weight [kg]:  | 4.700                |
|   | Notation:   | 180° reversible      |
|   | Tool drive:   | Bevel gear           |
|   | Shank size [mm]:                                    | 45.00                |
|   | Shank type:   | BMT                  |
|   | Tool adaption:                                      | ER 20 A              |
|   | Gear ratio [i]:                                     | 1:2                  |
|   | Torque max [Nm]:                                    | 12                   |
|   | Rotation max [1/min]:                               | 12000                |
|   | Rotating direction:                                 | opposite             |
|   | Coolant:  | EXT                  |
|   | Center distance [mm]:                               | 55                   |
| <b>8 030 45 060</b>   | <b>Radial drilling and milling head ER 25 IC</b>    |                      |
|  | Weight [kg]:  | 4.100                |
|   | Notation:   | 180° reversible      |
|   | Tool drive:   | Bevel gear           |
|   | Shank size [mm]:                                    | 45.00                |
|   | Shank type:   | BMT                  |
|   | Tool adaption:                                      | ER 25                |
|   | Gear ratio [i]:                                     | 1:1                  |
|   | Torque max [Nm]:                                    | 25                   |
|   | Rotation max [1/min]:                               | 6000                 |
|   | Rotating direction:                                 | opposite             |
|   | Coolant:  | IC/Ext               |
|   | Pressure max [bar]:                                 | 140                  |
|   | Center distance [mm]:                               | 55                   |
| <b>8 030 45 178</b>   | <b>Radial drilling and milling head ER 25 AX UT</b> |                      |
|   | Weight [kg]:  | 5.350                |
|   | Notation:   | 180° reversible      |
|   | Tool drive:   | Bevel gear           |
|   | Shank size [mm]:                                    | 45.00                |
|   | Shank type:   | BMT                  |
|   | Tool adaption:                                      | ER 25 A - u-tec      |
|   | Gear ratio [i]:                                     | 1:1                  |
|   | Torque max [Nm]:                                    | 50                   |
|   | Rotation max [1/min]:                               | 6000                 |
|   | Rotating direction:                                 | opposite             |
|   | Coolant:  | EXT                  |
|   | Please note:  | Check applicability! |
|   | Center distance [mm]:                               | 65                   |
| <b>8 031 45 017</b>   | <b>Radial milling head universal arbor 22</b>       |                      |
|   | Weight [kg]:  | 3.780                |
|   | Notation:   | 180° reversible      |
|   | Tool drive:   | Bevel gear           |
|   | Shank size [mm]:                                    | 45.00                |
|   | Shank type:   | BMT                  |
|   | Tool adaption:                                      | Universal arbor 22   |
|   | Gear ratio [i]:                                     | 1:1                  |
|   | Torque max [Nm]:                                    | 25                   |
|   | Rotation max [1/min]:                               | 6000                 |
|   | Rotating direction:                                 | opposite             |
|   | Coolant:  | EXT                  |
|   | Center distance [mm]:                               | 55                   |

## BNE 51 S oberer Revolver - Kegelrad

| Part-#              | Name   |                                |
|---------------------|--|--------------------------------|
| <b>8 040 44 014</b> | <b>Universal head ± 90° adjustable ER 16</b>     |                                |
|                     | Weight [kg]:                                     | 3.140                          |
|                     | Tool drive:                                      | Bevel gear                     |
|                     | Shank size [mm]:                                 | 45.00                          |
|                     | Shank type:                                      | BMT                            |
|                     | Tool adaption:                                   | ER 16                          |
|                     | Gear ratio [i]:                                  | 1:1                            |
|                     | Torque max [Nm]:                                 | 10                             |
|                     | Rotation max [1/min]:                            | 6000                           |
|                     | Rotating direction:                              | same                           |
|                     | Coolant:   | EXT                            |
|                     | Center distance [mm]:                            | 55                             |
| <b>8 043 44 013</b> | <b>Universal head +105°/-20° adj. ER16 AX UT</b> |                                |
|                     | Weight [kg]:                                     | 5.860                          |
|                     | Notation:  | offset                         |
|                     | Tool drive:                                      | Bevel gear                     |
|                     | Shank size [mm]:                                 | 45.00                          |
|                     | Shank type:                                      | BMT                            |
|                     | Tool adaption:                                   | ER 16 A - u-tec                |
|                     | Gear ratio [i]:                                  | 1:1                            |
|                     | Torque max [Nm]:                                 | 25                             |
|                     | Rotation max [1/min]:                            | 6000                           |
|                     | Rotating direction:                              | opposite                       |
|                     | Coolant:   | EXT                            |
|                     | Please note:                                     | 180° reversible                |
|                     | Center distance [mm]:                            | 50                             |
|                     | Offset [mm]:                                     | 35                             |
| <b>8 043 45 003</b> | <b>Universal head +105°/-20° adj. Weldon 16</b>  |                                |
|                     | Weight [kg]:                                     | 6.090                          |
|                     | Notation:  | offset; 180° reversible        |
|                     | Version:   | Special                        |
|                     | Tool drive:                                      | Bevel gear                     |
|                     | Shank size [mm]:                                 | 45.00                          |
|                     | Shank type:                                      | BMT                            |
|                     | Tool adaption:                                   | Weldon (DIN 1835 b) 16 special |
|                     | Gear ratio [i]:                                  | 1:1                            |
|                     | Torque max [Nm]:                                 | 25                             |
|                     | Rotation max [1/min]:                            | 6000                           |
|                     | Rotating direction:                              | opposite                       |
|                     | Coolant:   | EXT                            |
|                     | Please note:                                     | stronger bearing               |
|                     | Center distance [mm]:                            | 50                             |
|                     | Offset [mm]:                                     | 35                             |
| <b>8 202 00 010</b> | <b>Basic holder longitudinal seat FN 12</b>      |                                |
|                     | Weight [kg]:                                     | 0.920                          |
|                     | Notation:  | 180° reversible                |
|                     | Shank type:                                      | BMT                            |
|                     | Machine adaption:                                | Centering bolt ø 12            |
|                     | Tool adaption:                                   | Interface FN 12                |
|                     | Coolant:   | EXT                            |



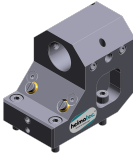

## BNE 51 S oberer Revolver - Kegellrad

| Part-#  | Name  |  |
|---|---|--|
| <b>8 224 03 016</b>   | <b>Universal turning holder sq. 3/4" IC</b> |  |
|    | Weight [kg]:                                | 2.630                                  |
|   | Notation:                                   | 180° reversible                        |
|   | Shank type:                                 | BMT                                    |
|   | Machine adaption:                           | Centering bolt $\varnothing$ 12        |
|   | Tool adaption:                              | Sq. 3/4" (19,05mm)                     |
|   |   | Sq. 3/4" (19,05mm)                     |
|   | Coolant:                                    | IC/Ext                                 |
|   | Pressure max [bar]:                         | 100                                    |
|   | Please note:                                | Key rail                               |
| <b>8 224 04 000</b>   | <b>Universal turning holder sq. 20</b>      |  |
|    | Weight [kg]:                                | 2.640                                  |
|   | Notation:                                   | 180° reversible                        |
|   | Shank type:                                 | BMT                                    |
|   | Machine adaption:                           | Centering bolt $\varnothing$ 12        |
|   | Tool adaption:                              | Sq. 20                                 |
|   |   | Sq. 20                                 |
|   | Coolant:                                    | EXT                                    |
| <b>8 224 04 035</b>   | <b>Universal turning holder sq. 20 IC</b>   |  |
|  | Weight [kg]:                                | 2.620                                  |
|   | Notation:                                   | 180° reversible                        |
|   | Shank type:                                 | BMT                                    |
|   | Machine adaption:                           | Centering bolt $\varnothing$ 12        |
|   | Tool adaption:                              | Sq. 20                                 |
|   | Coolant:                                    | IC                                     |
| <b>8 224 04 068</b>   | <b>Universal turning holder sq. 20 IC</b>   |  |
|  | Weight [kg]:                                | 2.610                                  |
|   | Notation:                                   | 180° reversible                        |
|   | Shank type:                                 | BMT                                    |
|   | Machine adaption:                           | Centering bolt $\varnothing$ 12        |
|   | Tool adaption:                              | Sq. 20                                 |
|   |   | Sq. 20                                 |
|   | Coolant:                                    | IC/Ext                                 |
|   | Pressure max [bar]:                         | 100                                    |
|   | Please note:                                | Key rail                               |
| <b>8 229 05 004</b>   | <b>Tool holder C 3 IC</b>                   |  |
|   | Weight [kg]:                                | 2.980                                  |
|   | Notation:                                   | 180° reversible                        |
|   | Version:                                    | right                                  |
|   | Shank type:                                 | BMT                                    |
|   | Machine adaption:                           | Centering bolt $\varnothing$ 12        |
|   | Tool adaption:                              | heimatec Capto(TM) C 3                 |
|   | Coolant:                                    | IC                                     |
|   | Please note:                                | Check applicability; note tool length! |
|   | Offset [mm]:                                | 65                                     |

## BNE 51 S oberer Revolver - Kegelrad

| Part-#              | Name                          |  |
|---------------------|-------------------------------|--|
| <b>8 229 05 005</b> | <b>Tool holder C 3 IC</b>     |  |
|                     | Weight [kg]:                  | 1.590                                  |
|                     | Notation:                     | 180° reversible                        |
|                     | Version:                      | right                                  |
|                     | Shank type:                   | BMT                                    |
|                     | Machine adaption:             | Centering bolt ø 12                    |
|                     | Tool adaption:                | heimatec Capto(TM) C 3                 |
|                     | Coolant:                      | IC                                     |
|                     | Please note:                  | Check applicability; note tool length! |
|                     | Offset [mm]:                  | 27                                     |
| <b>8 240 05 034</b> | <b>Boring bar holder Ø 16</b> |  |
|                     | Weight [kg]:                  | 4.360                                  |
|                     | Notation:                     | 180° reversible                        |
|                     | Shank type:                   | BMT                                    |
|                     | Machine adaption:             | Centering bolt ø 12                    |
|                     | Tool adaption:                | Ø 16                                   |
|                     | Coolant:                      | IC/Ext                                 |
|                     | Center distance [mm]:         | 75                                     |
| <b>8 240 05 059</b> | <b>Tool holder C 3 IC</b>     |  |
|                     | Weight [kg]:                  | 4.130                                  |
|                     | Notation:                     | 180° reversible                        |
|                     | Version:                      | right                                  |
|                     | Shank type:                   | BMT                                    |
|                     | Machine adaption:             | Centering bolt ø 12                    |
|                     | Tool adaption:                | heimatec Capto(TM) C 3                 |
|                     | Coolant:                      | IC                                     |
|                     | Please note:                  | Check applicability; note tool length! |
|                     | Center distance [mm]:         | 80                                     |
| <b>8 240 05 060</b> | <b>Tool holder C 3 IC</b>     |  |
|                     | Weight [kg]:                  | 3.190                                  |
|                     | Notation:                     | 180° reversible                        |
|                     | Version:                      | offset; right                          |
|                     | Shank type:                   | BMT                                    |
|                     | Machine adaption:             | Centering bolt ø 12                    |
|                     | Tool adaption:                | heimatec Capto(TM) C 3                 |
|                     | Coolant:                      | IC                                     |
|                     | Please note:                  | Check applicability; note tool length! |
|                     | Center distance [mm]:         | 80                                     |
| <b>8 240 06 034</b> | <b>Boring bar holder Ø 20</b> |  |
|                     | Weight [kg]:                  | 4.280                                  |
|                     | Notation:                     | 180° reversible                        |
|                     | Shank type:                   | BMT                                    |
|                     | Machine adaption:             | Centering bolt ø 12                    |
|                     | Tool adaption:                | Ø 20                                   |
|                     | Coolant:                      | IC/Ext                                 |
|                     | Center distance [mm]:         | 75                                     |
| <b>8 240 07 038</b> | <b>Boring bar holder Ø 25</b> |  |
|                     | Weight [kg]:                  | 4.160                                  |
|                     | Notation:                     | 180° reversible                        |
|                     | Shank type:                   | BMT                                    |
|                     | Machine adaption:             | Centering bolt ø 12                    |
|                     | Tool adaption:                | Ø 25                                   |
|                     | Coolant:                      | IC/Ext                                 |

## BNE 51 S oberer Revolver - Kegelrad

| Part-#  | Name                               |                     |
|---|------------------------------------|---------------------|
|   | Center distance [mm]:              | 75                  |
| <b>8 240 07 050</b>   | <b>Boring bar holder Ø 1 1/4 "</b> |                     |
|   | Weight [kg]:                       | 3.790               |
|   | Notation:                          | offset              |
|   | Shank type:                        | BMT                 |
|   | Machine adaption:                  | Centering bolt ø 12 |
|   | Tool adaption:                     | Ø 1 1/4" (31,75mm)  |
|   | Coolant:                           | IC/Ext              |
|   | Center distance [mm]:              | 75                  |
| <b>8 240 08 000</b>   | <b>Boring bar holder Ø 32</b>      |                     |
|    | Weight [kg]:                       | 3.740               |
|   | Notation:                          | offset              |
|   | Shank type:                        | BMT                 |
|   | Machine adaption:                  | Centering bolt ø 12 |
|   | Tool adaption:                     | Ø 32                |
|   | Coolant:                           | IC/Ext              |
|   | Center distance [mm]:              | 75                  |
| <b>8 240 08 046</b>   | <b>Boring bar holder Ø 32</b>      |                     |
|   | Weight [kg]:                       | 3.940               |
|   | Notation:                          | 180° reversible     |
|   | Shank type:                        | BMT                 |
|   | Machine adaption:                  | Centering bolt ø 12 |
|   | Tool adaption:                     | Ø 32                |
|   | Coolant:                           | IC/Ext              |
|   | Center distance [mm]:              | 75                  |
| <b>8 240 08 074</b>   | <b>Boring bar holder Ø 1 1/2"</b>  |                     |
|   | Weight [kg]:                       | 4.000               |
|   | Shank type:                        | BMT                 |
|   | Machine adaption:                  | Centering bolt ø 12 |
|   | Tool adaption:                     | Ø 1 1/2" (38,1mm)   |
|   | Coolant:                           | IC/Ext              |
|   | Center distance [mm]:              | 75                  |
| <b>8 240 09 002</b>   | <b>Boring bar holder Ø 40</b>      |                     |
|  | Weight [kg]:                       | 2.660               |
|   | Version:                           | offset              |
|   | Shank type:                        | BMT                 |
|   | Machine adaption:                  | Centering bolt Ø 12 |
|   | Tool adaption:                     | Ø 40                |
|   | Coolant:                           | IC/Ext              |
|   | Center distance [mm]:              | 75                  |
| <b>8 240 09 013</b>   | <b>Boring bar holder Ø 40</b>      |                     |
|   | Weight [kg]:                       | 3.950               |
|   | Shank type:                        | BMT                 |
|   | Machine adaption:                  | Centering bolt Ø 12 |
|   | Tool adaption:                     | Ø 40                |
|   | Coolant:                           | IC/Ext              |
|   | Center distance [mm]:              | 75                  |

## BNE 51 S oberer Revolver - Kegelrad



| Part-#              | Name  |  |
|---------------------|---|--|
| <b>8 244 04 019</b> | <b>Combi facing holder sq. 20</b>             |  |
|                     | Weight [kg]:                                  | 3.700  |
|                     | Shank type:                                   | BMT  |
|                     | Machine adaption:                             | Centering bolt ø 12  |
|                     | Tool adaption:                                | Sq. 20   |
|                     | Coolant:                                      | EXT  |
| <b>8 249 05 008</b> | <b>Double tool holder C 3 IC</b>              |  |
|                     | Weight [kg]:                                  | 4.860  |
|                     | Employment for:                               | Main- and sub spindle  |
|                     | Version:                                      | right  |
|                     | Shank type:                                   | BMT  |
|                     | Machine adaption:                             | Centering bolt ø 12  |
|                     | Tool adaption:                                | heimatec Capto(TM) C 3<br>heimatec Capto(TM) C 3                                     |
|                     | Coolant:                                      | IC   |
|                     | Please note:                                  | Check applicability; note tool length!   |
|                     | Center distance [mm]:                         | 80   |
| <b>8 250 05 002</b> | <b>Multiple tool holder C 3 IC</b>            |  |
|                     | Weight [kg]:                                  | 2.140  |
|                     | Employment for:                               | Main- and sub spindle  |
|                     | Version:                                      | right  |
|                     | Shank type:                                   | BMT  |
|                     | Machine adaption:                             | Centering bolt ø 12  |
|                     | Tool adaption:                                | heimatec Capto(TM) C 3<br>heimatec Capto(TM) C 3                                     |
|                     | Coolant:                                      | IC   |
|                     | Please note:                                  | Check applicability; note tool length!   |
|                     | Offset [mm]:                                  | 27<br>27   |
| <b>8 250 05 003</b> | <b>Multiple tool holder C 3 IC</b>            |  |
|                     | Weight [kg]:                                  | 3.730  |
|                     | Employment for:                               | Main- and sub spindle  |
|                     | Version:                                      | right  |
|                     | Shank type:                                   | BMT  |
|                     | Machine adaption:                             | Centering bolt ø 12  |
|                     | Tool adaption:                                | heimatec Capto(TM) C 3<br>heimatec Capto(TM) C 3                                     |
|                     | Coolant:                                      | IC   |
|                     | Please note:                                  | Check applicability; note tool length!   |
|                     | Offset [mm]:                                  | 65<br>65   |
| <b>8 251 03 002</b> | <b>Combi double turning holder sq. 3/4"IC</b> |  |
|                     | Weight [kg]:                                  | 4.360  |
|                     | Notation:                                     | 180° reversible  |
|                     | Shank type:                                   | BMT  |
|                     | Machine adaption:                             | Centering bolt ø 12  |
|                     | Tool adaption:                                | Sq. 3/4" (19,05mm)<br>Sq. 3/4" (19,05mm)<br>Sq. 3/4" (19,05mm)<br>Sq. 3/4" (19,05mm) |
|                     | Coolant:                                      | IC/Ext   |
|                     | Pressure max [bar]:                           | 100  |
|                     | Please note:                                  | Key rail   |




## BNE 51 S oberer Revolver - Kegelrad

| Part-#  | Name  |                                 |
|---|---|---------------------------------|
| <b>8 251 04 002</b>   | <b>Combi double turning holder sq. 20</b>                     |                                 |
|    | Weight [kg]:  | 4.380                           |
|   | Notation:   | 180° reversible                 |
|   | Shank type:   | BMT                             |
|   | Machine adaption:   | Centering bolt $\varnothing$ 12 |
|   | Tool adaption:  | Sq. 20                          |
|   |   | Sq. 20                          |
|   |   | Sq. 20                          |
|   |   | Sq. 20                          |
|   | Coolant:  | EXT                             |
| <b>8 251 04 003</b>   | <b>Combi double turning holder sq. 3/4"</b>                   |                                 |
|    | Weight [kg]:  | 4.410                           |
|   | Notation:   | 180° reversible                 |
|   | Shank type:   | BMT                             |
|   | Machine adaption:   | Centering bolt $\varnothing$ 12 |
|   | Tool adaption:  | Sq. 3/4" (19,05mm)              |
|   |   | Sq. 3/4" (19,05mm)              |
|   |   | Sq. 3/4" (19,05mm)              |
|   |   | Sq. 3/4" (19,05mm)              |
|   | Coolant:  | EXT                             |
| <b>8 251 04 059</b>   | <b>Combi double turning holder sq. 20 IC</b>                  |                                 |
|  | Weight [kg]:  | 4.360                           |
|   | Notation:   | 180° reversible                 |
|   | Shank type:   | BMT                             |
|   | Machine adaption:   | Centering bolt $\varnothing$ 12 |
|   | Tool adaption:  | Sq. 20                          |
|   |   | Sq. 20                          |
|   |   | Sq. 20                          |
|   |   | Sq. 20                          |
|   | Coolant:  | IC/Ext                          |
|   | Pressure max [bar]:   | 100                             |
|   | Please note:  | Key rail                        |
| <b>8 253 07 000</b>   | <b>Double boring bar holder <math>\varnothing</math> 25</b>   |                                 |
|  | Weight [kg]:  | 2.320                           |
|   | Notation:   | offset, 180° reversible         |
|   | Shank type:   | BMT                             |
|   | Machine adaption:   | Centering bolt $\varnothing$ 12 |
|   | Tool adaption:  | $\varnothing$ 25                |
|   |   | $\varnothing$ 25                |
|   | Coolant:  | IC/Ext                          |
|   | Center distance [mm]:   | 50/85                           |
| <b>8 253 07 003</b>   | <b>Multiple boring bar holder <math>\varnothing</math> 1"</b> |                                 |
|  | Weight [kg]:  | 2.530                           |
|   | Notation:   | offset, 180° reversible         |
|   | Shank type:   | BMT                             |
|   | Machine adaption:   | Centering bolt $\varnothing$ 12 |
|   | Tool adaption:  | $\varnothing$ 1" (25,4mm)       |
|   |   | $\varnothing$ 1" (25,4mm)       |
|   | Coolant:  | IC/Ext                          |
|   | Center distance [mm]:   | 50/85                           |

## BNE 51 S oberer Revolver - Kegelrad

| Part-#  | Name                                     |                               |
|---|--|-------------------------------|
| <b>8 253 07 004</b>   | <b>Double boring bar holder Ø 1"</b>     |                               |
|  | Weight [kg]:                             | 3.740                         |
|   | Notation:                                | 180° reversible               |
|   | Shank type:                              | BMT                           |
|   | Machine adaption:                        | Centering bolt Ø 12           |
|   | Tool adaption:                           | Ø 1" (25,4mm)                 |
|   |  | Ø 1" (25,4mm)                 |
|   | Coolant:                                 | IC/Ext                        |
|   | Center distance [mm]:                    | 50/85                         |
| <b>8 253 07 006</b>   | <b>Double boring bar holder Ø 25</b>     |                               |
|  | Weight [kg]:                             | 3.710                         |
|   | Notation:                                | 180° reversible               |
|   | Shank type:                              | BMT                           |
|   | Machine adaption:                        | Centering bolt Ø 12           |
|   | Tool adaption:                           | Ø 25                          |
|   |  | Ø 25                          |
|   | Coolant:                                 | IC/Ext                        |
|   | Center distance [mm]:                    | 50/85                         |
| <b>8 259 01 006</b>   | <b>Multiple turning holder 4x sq. 20</b> |                               |
|   | Weight [kg]:                             | 4.700                         |
|   | Employment for:                          | Main- and sub spindle         |
|   | Version:                                 | Y-axes offset                 |
|   | Shank type:                              | BMT                           |
|   | Machine adaption:                        | Centering bolt Ø 12           |
|   | Tool adaption:                           | Sq. 20                        |
|   |  | Sq. 20                        |
|   |  | Sq. 20                        |
|   |  | Sq. 20                        |
|   | Coolant:                                 | EXT                           |
| <b>8 259 09 001</b>   | <b>Multiple holder Ø25 and sq. 20</b>    |                               |
|   | Weight [kg]:                             | 3.980                         |
|   | Notation:                                | 180° reversible               |
|   | Shank type:                              | BMT                           |
|   | Machine adaption:                        | Centering bolt Ø 12           |
|   | Tool adaption:                           | Ø25/ sq. 20                   |
|   |  | Ø25/ sq. 20                   |
|   | Coolant:                                 | IC/Ext                        |
|   | Center distance [mm]:                    | 50/85                         |
| <b>8 261 08 000</b>   | <b>Tool holder for centering insert</b>  |                               |
|   | Weight [kg]:                             | 5.270                         |
|   | Notation:                                | 180° reversible               |
|   | Shank type:                              | BMT                           |
|   | Machine adaption:                        | Centering bolt Ø 12           |
|   | Tool adaption:                           | Ø 32                          |
|   | Coolant:                                 | EXT                           |
|   | Please note:                             | Price without centering point |
|   | Center distance [mm]:                    | 55                            |

## BNE 51 S oberer Revolver - Kegelrad

| Part-#              | Name  |  |
|---------------------|---|--|
| <b>8 263 09 000</b> | <b>Tool holder with rotating centering point</b>  |  |
|                     | Weight [kg]:                                      | 4.070  |
|                     | Notation:   | 180° reversible  |
|                     | Shank type:                                       | BMT  |
|                     | Machine adaption:                                 | Centering bolt ø 12  |
|                     | Rotation max [1/min]:                             | 6000   |
|                     | Coolant:  | EXT  |
|                     | Please note:                                      | Taper roller bearings  |
|                     | Center distance [mm]:                             | 75   |
| <b>8 263 09 007</b> | <b>Tool holder with rotating centering point</b>  |  |
|                     | Weight [kg]:                                      | 6.410  |
|                     | Notation:   | 180° reversible; offset  |
|                     | Shank type:                                       | BMT  |
|                     | Machine adaption:                                 | Centering bolt ø 12  |
|                     | Rotation max [1/min]:                             | 6000   |
|                     | Coolant:  | EXT  |
|                     | Center distance [mm]:                             | 85   |
| <b>8 320 02 017</b> | <b>Cut-off holder, height adjustable SH 26 IC</b> |  |
|                     | Weight [kg]:                                      | 1.410  |
|                     | Notation:   | 180° reversible  |
|                     | Shank type:                                       | BMT  |
|                     | Machine adaption:                                 | Centering bolt ø 12  |
|                     | Tool adaption:                                    | Clampshaft SH 26   |
|                     | Coolant:  | IC/Ext   |
|                     | Pressure max [bar]:                               | 70   |
| <b>8 320 02 018</b> | <b>Cut-off holder, height adjustable SH 26 IC</b> |  |
|                     | Weight [kg]:                                      | 1.560  |
|                     | Notation:   | 180° reversible  |
|                     | Shank type:                                       | BMT  |
|                     | Machine adaption:                                 | Centering bolt ø 12  |
|                     | Tool adaption:                                    | Clampshaft SH 26   |
|                     | Coolant:  | IC/Ext   |
|                     | Pressure max [bar]:                               | 70   |
|                     | Please note:                                      | Clampshaft internal  |
| <b>8 320 09 003</b> | <b>Cut-off holder, height adjustable 845 IC</b>   |  |
|                     | Weight [kg]:                                      | 1.390  |
|                     | Notation:   | 180° reversible  |
|                     | Shank type:                                       | BMT  |
|                     | Machine adaption:                                 | Centering bolt ø 12  |
|                     | Tool adaption:                                    |  System 845 |
|                     | Coolant:  | IC   |
|                     | Pressure max [bar]:                               | 70   |



## heimatec.u-tec®

heimatec.com

Products / Tool change systems /  
u-tec® Tool-changing system



versions see catalog



## heimatec.easy-quick

heimatec.com

Products / Tool change systems /  
easy-quick HT quick-changing system



versions see catalog



## heimatec.Capto™

heimatec.com

Products / Tool change systems /  
heimatec.Capto™ quick-changing system



versions see catalog



## heimatec.accessories

heimatec.com

Products / Accessories



versions see catalog





● heimatec overseas branches

○ global representations of heimatec

**heimatec**<sup>®</sup>

**heimatec GmbH**  
Präzisionswerkzeuge  
Carl-Benz-Str. 4  
77871 Renchen  
Germany

T +49 7843 9466 0  
[www.heimatec.com](http://www.heimatec.com)  
[info@heimatec.com](mailto:info@heimatec.com)

Please find the contact details of our worldwide trading partners on our website:  
<https://heimatec.com/business-partners>